



---

# Customer information packet

## EM3663T

5HP, 3480RPM, 3PH, 60HZ, 184T, 0628M, TEFC, F1

Class - None

Division - Not Applicable

## Specifications

Enclosure	TEFC
Frame	184T
Frame Material	Iron
Frequency	60.00 Hz
Haz Area Class and Group	None
Haz Area Division	Not Applicable
Motor Letter Type	Three Phase
Output @ Frequency	5.000 HP @ 60 HZ
Phase	3
Synchronous Speed @ Frequency	3600 RPM @ 60 HZ
Voltage @ Frequency	230.0 V @ 60 HZ 460.0 V @ 60 HZ
Agency Approvals	CSA EEV NEMA PREMIUM NEMA_PREMIUM UR
Ambient Temperature	40 °C
Auxillary Box	No Auxillary Box
Auxillary Box Lead Termination	None
Base Indicator	Rigid
Bearing Grease Type	Polyrex EM (-20F +300F)
Blower	None
Current @ Voltage	5.800 A @ 460.0 V 12.400 A @ 208.0 V 11.600 A @ 230.0 V
Design Code	A
Drip Cover	No Drip Cover
Duty Rating	CONT
Efficiency @ 100% Load	88.5 %
Electrically Isolated Bearing	Not Electrically Isolated
Feedback Device	NO FEEDBACK
Front Shaft Indicator	None

## Part detail

Revision	E
Type	AC
Mech. spec.	06H002
Base	
Status	PRD/A
Elec. spec.	06WGY578
Layout	06LYH002
Eff. date	04-29-2024
CD Diagram	CD0005
Poles	02
Leads	9#16
Proprietary	False
Created date	08-30-2018

Heater Indicator	No Heater
High Voltage Full Load Amps	5.8 a
Insulation Class	F
Inverter Code	Inverter Ready
KVA Code	L
Lifting Lugs	Standard Lifting Lugs
Locked Bearing Indicator	No Locked Bearing
Motor Lead Quantity/Wire Size	9 @ 16 AWG
Motor Lead Termination	Flying Leads
Motor Standards	NEMA
Motor Type	0628M
Mounting Arrangement	F1
Number of Poles	2
Overall Length	15.23 IN
Power Factor	90
Product Family	General Purpose
Pulley End Bearing Type	Ball
Pulley Face Code	Standard
Pulley Shaft Indicator	Standard
Rodent Screen	None
Service Factor	1.15
Shaft Diameter	1.125 IN
Shaft Ground Indicator	No Shaft Grounding
Shaft Rotation	Reversible
Shaft Slinger Indicator	No Slinger
Speed	3475 rpm
Speed Code	Single Speed
Starting Method	Direct on line
Thermal Device - Bearing	None
Thermal Device - Winding	None
Vibration Sensor Indicator	No Vibration Sensor
Winding Thermal 1	None
Winding Thermal 2	None

**Nameplate**

**NP3441LUA**

<b>CAT.NO.</b>	EM3663T						
<b>SPEC</b>	06H002Y578G1						
<b>HP</b>	5						
<b>VOLTS</b>	208-230/460						
<b>AMPS</b>	12.4-11.6/5.8						
<b>RPM</b>	3475						
<b>FRAME</b>	184T		<b>HZ</b>	60		<b>PH</b>	3
<b>SF</b>	1.15	<b>CODE</b>	L	<b>DES</b>	A	<b>CLASS</b>	F
<b>NEMA NOM. EFF</b>	88.5	<b>PF</b>	90				
<b>RATING</b>	40C AMB-CONT						
<b>CC</b>	010A						
<b>ENCL</b>	TEFC	<b>SER</b>					
<b>DE</b>	6206	<b>ODE</b>	6205				
<b>VPWM INVERTER READY</b>	SFA 15-14/7						
<b>CT6-60H(10:1)VT3-60H(20:1)</b>	50HZ 5HP 190/380V 14/7A						SF1.0

**Accessories**

<b>Part number</b>	<b>Description</b>	<b>Multiplier</b>
36-1749	C FACE KIT	A8

**AC Induction Motor Performance Data**

Record # 84210

Typical performance - not guaranteed values

<b>Winding: 06WGY578-R001</b>		<b>Type: 0628M</b>		<b>Enclosure: TEFC</b>	
<b>Nameplate Data</b>			<b>460 V, 60 Hz: High Voltage Connection</b>		
<b>Rated Output (HP)</b>	5		<b>Full Load Torque</b>	7.579 LB-FT	
<b>Volts</b>	230/460		<b>Start Configuration</b>	direct on line	
<b>Full Load Amps</b>	11.6/5.8		<b>Breakdown Torque</b>	31.2 LB-FT	
<b>R.P.M.</b>	3480		<b>Pull-up Torque</b>	18.3 LB-FT	
<b>Hz</b>	<b>60 Phase</b>	3	<b>Locked-rotor Torque</b>	24.7 LB-FT	
<b>NEMA Design Code</b>	<b>A KVA Code</b>	L	<b>Starting Current</b>	57.4 A	
<b>Service Factor (S.F.)</b>	1.15		<b>No-load Current</b>	2.02 A	
<b>NEMA Nom. Eff.</b>	<b>88.5 Power Factor</b>	91	<b>Line-line Res. @ 25°C</b>	2.9991 Ω	
<b>Rating - Duty</b>	40C AMB-CONT		<b>Temp. Rise @ Rated Load</b>	61°C	
<b>S.F. Amps</b>			<b>Temp. Rise @ S.F. Load</b>	77°C	
			<b>Locked-rotor Power Factor</b>	53.6	

**Load Characteristics 460 V, 60 Hz, 5 HP**

<b>% of Rated Load</b>	<b>25</b>	<b>50</b>	<b>75</b>	<b>100</b>	<b>125</b>	<b>150</b>	<b>S.F.</b>
<b>Power Factor</b>	57	78	87	91	92	93	92
<b>Efficiency</b>	86.5	90.2	90.2	89.1	87.6	85.6	88.2
<b>Speed</b>	3567.1	3539.3	3508.7	3476	3440.1	3400.5	3454
<b>Line amperes</b>	2.43	3.35	4.51	5.81	7.25	8.82	6.67

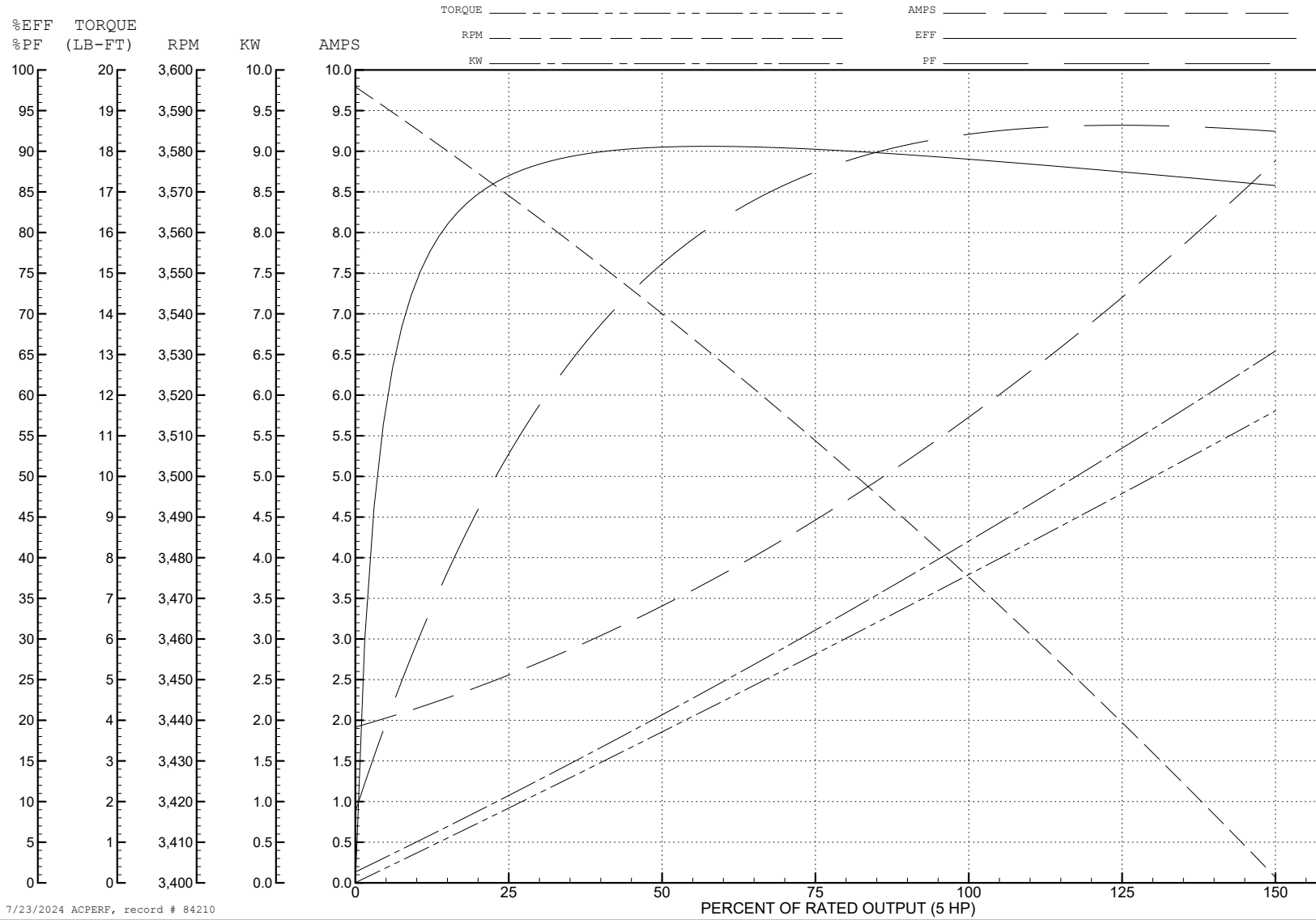
ABB Motors and Mechanical Inc.

WINDING # 06WGY578

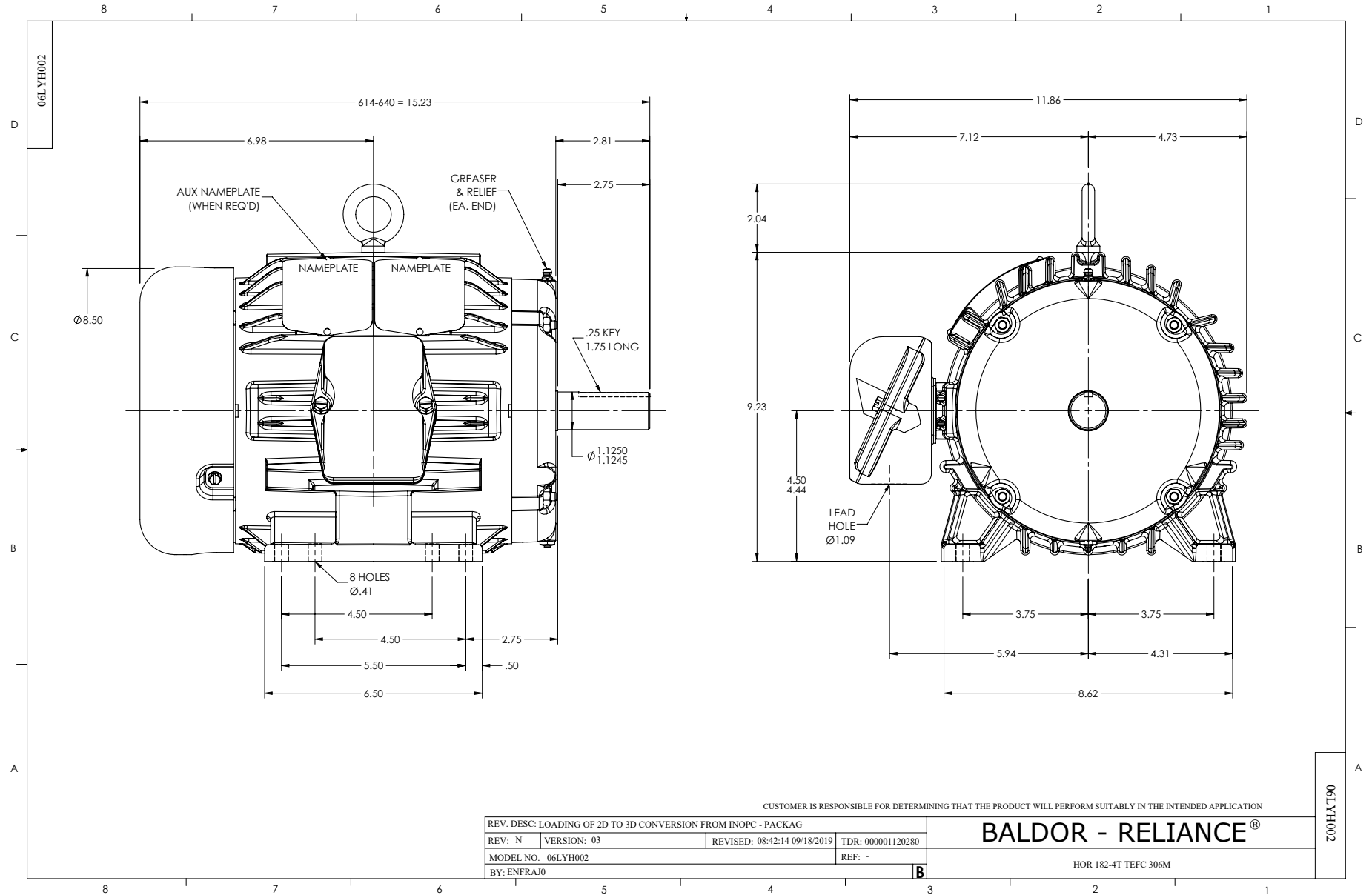
Typical performance - not guaranteed values.

5 HP 3 PH 60 HZ 3480 RPM 460 V 0628M

TORQUES (LB-FT): PO=31.2 PU=18.3 LR=24.7 LRA=57.4



7/23/2024 ACPERF, record # 84210



CUSTOMER IS RESPONSIBLE FOR DETERMINING THAT THE PRODUCT WILL PERFORM SUITABLY IN THE INTENDED APPLICATION

REV. DESC: LOADING OF 2D TO 3D CONVERSION FROM INOPC - PACKAG			
REV: N	VERSION: 03	REVISED: 08/21/19	TDR: 000001120280
MODEL NO. 06LYH002		REF: -	
BY: ENFRAJ0			

**BALDOR - RELIANCE**®

HOR 182-4T TEFC 306M

06LYH002



CD0005



LOW VOLTAGE  
(2Y)



LINE

HIGH VOLTAGE  
(1Y)



LINE

NOTES:

1. INTERCHANGE ANY TWO LINE LEADS TO REVERSE ROTATION.
2. OPTIONAL THERMOSTATS ARE PROVIDED WHEN SPECIFIED.
3. ACTUAL NUMBER OF INTERNAL PARALLEL CIRCUITS MAY BE A MULTIPLE OF THOSE SHOWN ABOVE.
4. LEAD COLORS ARE OPTIONAL. LEADS MUST ALWAYS BE NUMBERED AS SHOWN.

CD0005

REV. DESC: REVISE TO SHOW OPTIONAL COLORS			
REV. LTR: E	BY: JLP	REVISED: 01/19/99 10:15	TDR: 0171435
S00000		FILE: AAA00005140	MDL: -
		MTL: -	

BALDOR ELECTRIC Co.

3PH, DV, 9 LEADS