



Customer information packet

EM3614T-G

2HP, 1175RPM, 3PH, 60HZ, 184T, 3644M, TEFC, F1

Class - None

Division - Not Applicable

Specifications

Enclosure	TEFC
Frame	184T
Frame Material	Steel
Frequency	60.00 Hz
Haz Area Class and Group	None
Haz Area Division	Not Applicable
Motor Letter Type	Three Phase
Output @ Frequency	2.000 HP @ 60 HZ
Phase	3
Synchronous Speed @ Frequency	1200 RPM @ 60 HZ
Voltage @ Frequency	460.0 V @ 60 HZ 230.0 V @ 60 HZ
Agency Approvals	CSA CSA EEV UR
Ambient Temperature	40 °C
Auxillary Box	No Auxillary Box
Auxillary Box Lead Termination	None
Base Indicator	Rigid
Bearing Grease Type	Polyrex EM (-20F +300F)
Blower	None
Current @ Voltage	7.000 A @ 208.0 V 7.000 A @ 230.0 V 3.500 A @ 460.0 V
Design Code	A
Drip Cover	No Drip Cover
Duty Rating	CONT
Efficiency @ 100% Load	88.5 %
Electrically Isolated Bearing	Not Electrically Isolated
Feedback Device	NO FEEDBACK
Front Face Code	Standard
Front Shaft Indicator	None

Part detail

Revision	R
Type	AC
Mech. spec.	36M524
Base	
Status	PRD/A
Elec. spec.	36WGS917
Layout	36LYM524
Eff. date	07-11-2024
CD Diagram	CD0005
Poles	06
Leads	9#16
Proprietary	False
Created date	06-04-2012

Heater Indicator	No Heater
High Voltage Full Load Amps	3.5 a
Insulation Class	H
Inverter Code	Inverter Ready
KVA Code	M
Lifting Lugs	No Lifting Lugs
Locked Bearing Indicator	Locked Bearing
Motor Lead Exit	Ko Box
Motor Lead Quantity/Wire Size	9 @ 16 AWG
Motor Lead Termination	Flying Leads
Motor Standards	NEMA
Motor Type	3644M
Mounting Arrangement	F1
Number of Poles	6
Overall Length	18.04 IN
Power Factor	60
Product Family	General Purpose
Pulley End Bearing Type	Ball
Pulley Face Code	Standard
Pulley Shaft Indicator	Standard
Rodent Screen	None
Service Factor	1.15
Shaft Diameter	1.125 IN
Shaft Extension Location	Pulley End
Shaft Ground Indicator	Shaft Grounding
Shaft Rotation	Reversible
Shaft Slinger Indicator	No Slinger
Speed	1175 rpm
Speed Code	Single Speed
Starting Method	Direct on line
Thermal Device - Bearing	None
Thermal Device - Winding	None
Vibration Sensor Indicator	No Vibration Sensor
Winding Thermal 1	None

Winding Thermal 2

None

Nameplate

NP3441LUA

CAT.NO.	EM3614T-G						
SPEC	36M524S917G1						
HP	2						
VOLTS	230/460						
AMPS	7/3.5						
RPM	1175						
FRAME	184T		HZ	60		PH	3
SF	1.15	CODE	M	DES	A	CLASS	H
NEMA NOM. EFF	88.5	PF	60				
RATING	40C AMB-CONT						
CC	010A						
ENCL	TEFC	SER					
DE	6206	ODE	6205				
VPWM INVERTER READY	SFA 7.6/3.8						
CT6-60H(10:1)VT3-60H(20:1	50Hz 2HP 190/380V 7.8/3.9A						SF1.0

AC Induction Motor Performance Data

Record # 53182

Typical performance - not guaranteed values

Winding: 36WGS917-R004		Type: 3644M		Enclosure: TEFC	
Nameplate Data			460 V, 60 Hz: High Voltage Connection		
Rated Output (HP)	2	Full Load Torque	8.91 LB-FT		
Volts	230/460	Start Configuration	direct on line		
Full Load Amps	7/3.5	Breakdown Torque	40.2 LB-FT		
R.P.M.	1175	Pull-up Torque	21.6 LB-FT		
Hz	60 Phase	3	Locked-rotor Torque	28.2 LB-FT	
NEMA Design Code	A KVA Code	M	Starting Current	27.5 A	
Service Factor (S.F.)	1.15	No-load Current	2.45 A		
NEMA Nom. Eff.	88.5 Power Factor	60	Line-line Res. @ 25°C	4.2188 Ω	
Rating - Duty	40C AMB-CONT	Temp. Rise @ Rated Load	34°C		
S.F. Amps		Temp. Rise @ S.F. Load	39°C		

Load Characteristics 460 V, 60 Hz, 2 HP

% of Rated Load	25	50	75	100	125	150	S.F.
Power Factor	24	40	52	60	66	70	64
Efficiency	76.4	85.3	88	88.9	88.8	88.4	88.8
Speed	1196.9	1191.4	1185.5	1179.4	1172.7	1165.5	1175
Line amperes	2.53	2.76	3.09	3.49	3.97	4.52	3.78

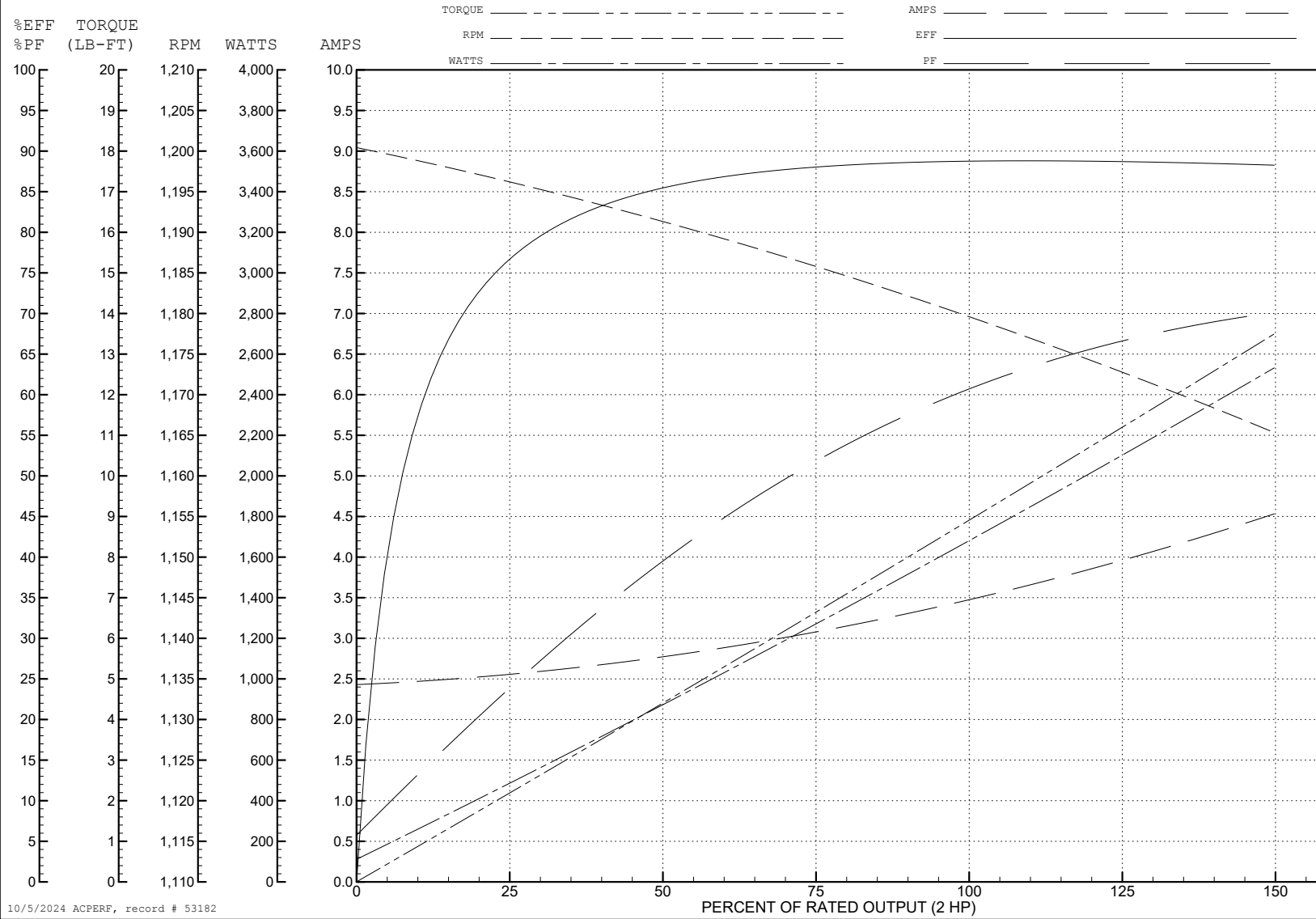
ABB Motors and Mechanical Inc.

WINDING # 36WGS917

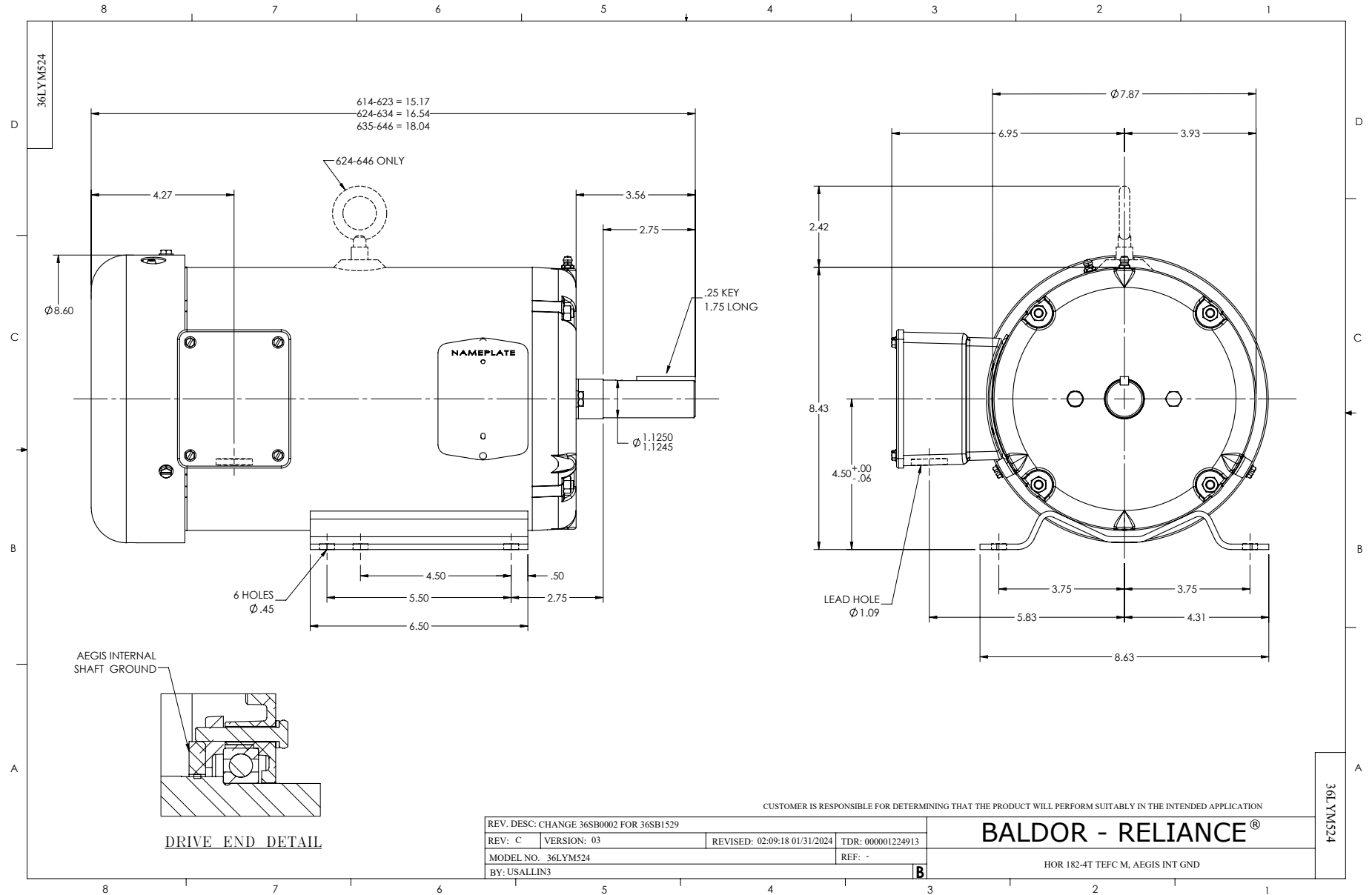
Typical performance - not guaranteed values.

2 HP 3 PH 60 HZ 1175 RPM 460 V 3644M

TORQUES (LB-FT): PO=40.2 PU=21.6 LR=28.2 LRA=27.5



10/5/2024 ACPERF, record # 53182



CD0005



LOW VOLTAGE
(2Y)



LINE

HIGH VOLTAGE
(1Y)



LINE

NOTES:

1. INTERCHANGE ANY TWO LINE LEADS TO REVERSE ROTATION.
2. OPTIONAL THERMOSTATS ARE PROVIDED WHEN SPECIFIED.
3. ACTUAL NUMBER OF INTERNAL PARALLEL CIRCUITS MAY BE A MULTIPLE OF THOSE SHOWN ABOVE.
4. LEAD COLORS ARE OPTIONAL. LEADS MUST ALWAYS BE NUMBERED AS SHOWN.

CD0005

REV. DESC: REVISE TO SHOW OPTIONAL COLORS			
REV. LTR: E	BY: JLP	REVISED: 01/19/99 10:15	TDR: 0171435
S00000		FILE: AAA00005140	MDL: -
		MTL: -	

BALDOR ELECTRIC Co.

3PH, DV, 9 LEADS