



Customer information packet

EM3611T-9

3HP, 1750RPM, 3PH, 60HZ, 182T, 3636M, TEFC, F1

Class - None

Division - Not Applicable

Specifications

Enclosure	TEFC
Frame	182T
Frame Material	Steel
Frequency	60.00 Hz
Haz Area Class and Group	None
Haz Area Division	Not Applicable
Motor Letter Type	Three Phase
Output @ Frequency	3.000 HP @ 60 HZ
Phase	3
Synchronous Speed @ Frequency	1800 RPM @ 60 HZ
Voltage @ Frequency	460.0 V @ 60 HZ 230.0 V @ 60 HZ
Agency Approvals	NEMA PREMIUM NEMA_PREMIUM UR CSA EEV
Ambient Temperature	40 °C
Auxillary Box	No Auxillary Box
Auxillary Box Lead Termination	None
Base Indicator	Rigid
Bearing Grease Type	Polyrex EM (-20F +300F)
Blower	None
Current @ Voltage	8.600 A @ 230.0 V 9.400 A @ 208.0 V 4.300 A @ 460.0 V
Design Code	C
Drip Cover	No Drip Cover
Duty Rating	CONT
Efficiency @ 100% Load	89.5 %
Electrically Isolated Bearing	Not Electrically Isolated
Feedback Device	NO FEEDBACK
Front Face Code	Standard

Part detail

Revision	E
Type	AC
Mech. spec.	36Q306
Base	
Status	PRD/A
Elec. spec.	36WGR666
Layout	36LYQ306
Eff. date	04-15-2024
CD Diagram	CD0005
Poles	04
Leads	9#16
Proprietary	False
Created date	10-28-2015

Front Shaft Indicator	None
Heater Indicator	No Heater
High Voltage Full Load Amps	4.3 a
Insulation Class	F
Inverter Code	Not Inverter
KVA Code	J
Lifting Lugs	No Lifting Lugs
Locked Bearing Indicator	No Locked Bearing
Motor Lead Exit	Ko Box
Motor Lead Quantity/Wire Size	9 @ 16 AWG
Motor Lead Termination	Flying Leads
Motor Standards	NEMA
Motor Type	3636M
Mounting Arrangement	F1
Number of Poles	4
Overall Length	18.04 IN
Power Factor	74
Product Family	WP Below Decks Marine Duty
Pulley End Bearing Type	Ball
Pulley Face Code	Standard
Pulley Shaft Indicator	Standard
Rodent Screen	None
Service Factor	1.15
Shaft Diameter	1.125 IN
Shaft Extension Location	Pulley End
Shaft Ground Indicator	No Shaft Grounding
Shaft Rotation	Reversible
Shaft Slinger Indicator	Shaft Slinger
Speed	1750 rpm
Speed Code	Single Speed
Starting Method	Direct on line
Thermal Device - Bearing	None
Thermal Device - Winding	None
Vibration Sensor Indicator	No Vibration Sensor

Winding Thermal 1

None

Winding Thermal 2

None

Nameplate

NP1267L									
CAT.NO.	EM3611T-9								
SPEC.	36Q306R666G1								
HP	3								
VOLTS	230/460								
AMP	8.6/4.3								
RPM	1750								
FRAME	182T		HZ	60		PH	3		
SER.F.	1.15	CODE	J	DES	C	CL	F		
NEMA-NOM-EFF	89.5	PF	74						
RATING	40C AMB-CONT								
CC	010A								
DE	6206	ODE	6205						
ENCL	TEFC	SN							

AC Induction Motor Performance Data

Record # 58092

Typical performance - not guaranteed values

Winding: 36WGR666-R002		Type: 3636M		Enclosure: TEFC	
Nameplate Data			460 V, 60 Hz: High Voltage Connection		
Rated Output (HP)		3	Full Load Torque		9.1 LB-FT
Volts		230/460	Start Configuration		direct on line
Full Load Amps		8.6/4.3	Breakdown Torque		28.2 LB-FT
R.P.M.		1750	Pull-up Torque		24.9 LB-FT
Hz	60 Phase	3	Locked-rotor Torque		31.6 LB-FT
NEMA Design Code	C	KVA Code J	Starting Current		27.5 A
Service Factor (S.F.)		1.15	No-load Current		2.28 A
NEMA Nom. Eff.	89.5	Power Factor 74	Line-line Res. @ 25°C		3.43 Ω
Rating - Duty		40C AMB-CONT	Temp. Rise @ Rated Load		43°C
S.F. Amps			Temp. Rise @ S.F. Load		52°C
			Locked-rotor Power Factor		45.5
			Rotor inertia		0.335 LB-FT ²

Load Characteristics 460 V, 60 Hz, 3 HP

% of Rated Load	25	50	75	100	125	150	S.F.
Power Factor	35	56	67	74	78	80	76
Efficiency	82.9	88.8	89.9	89.5	88.4	87.6	88.8
Speed	1787	1777	1766	1753	1739	1725	1745
Line amperes	2.46	2.92	3.52	4.27	5.12	6.02	4.78

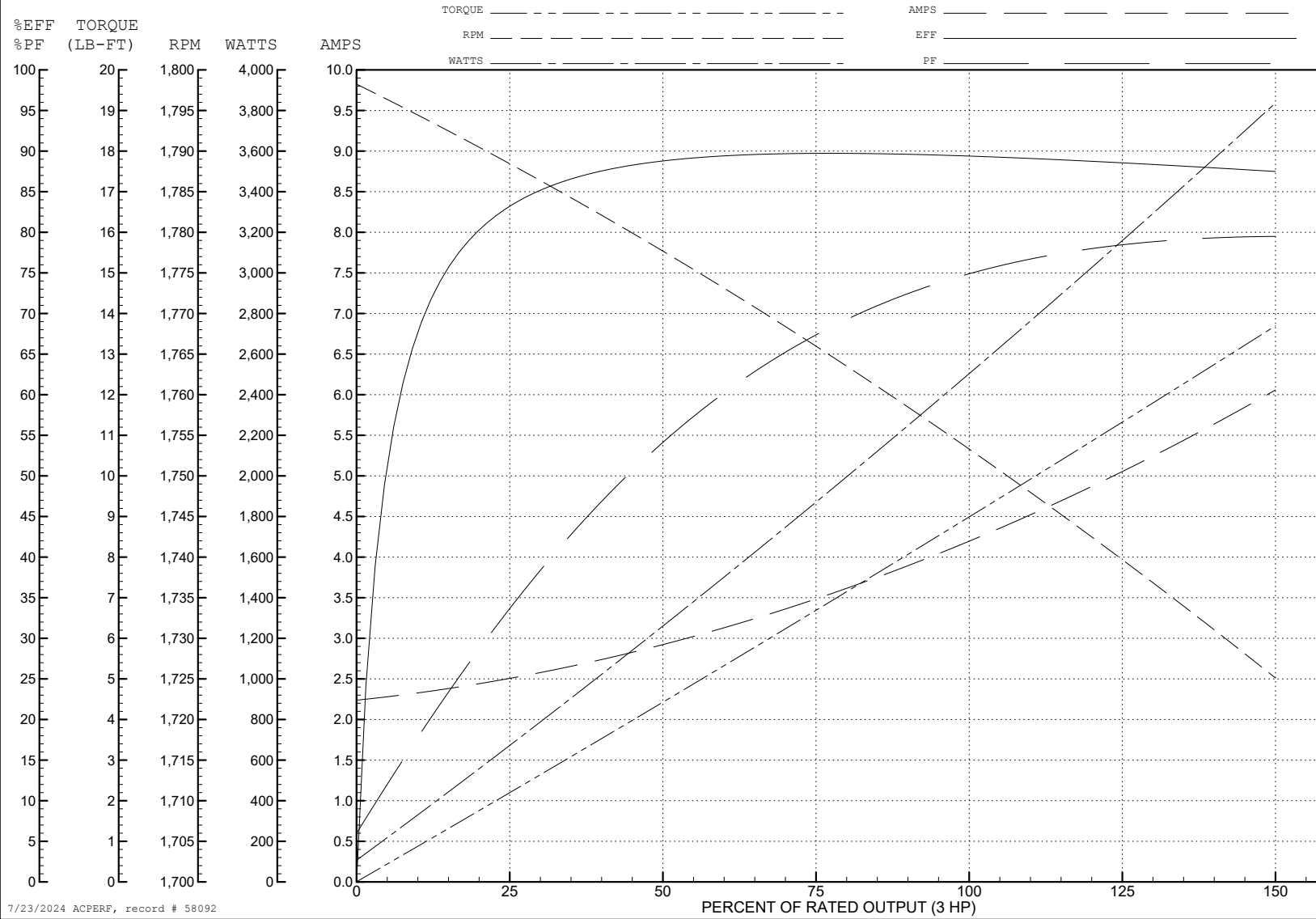
ABB Motors and Mechanical Inc.

WINDING # 36WGR666

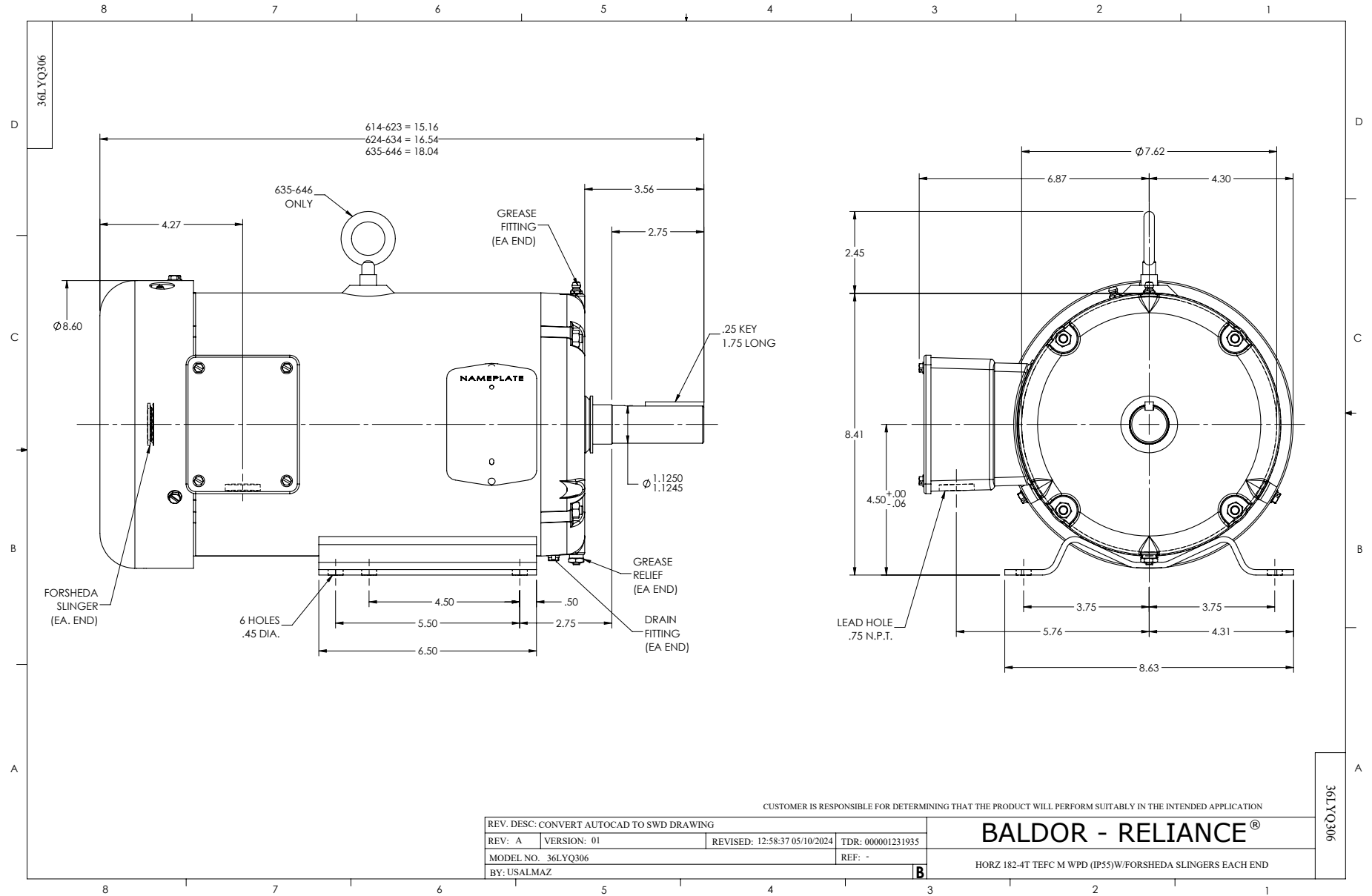
3 HP 3 PH 60 HZ 1750 RPM 460 V 3636M

Typical performance - not guaranteed values.

TORQUES (LB-FT): PO=28.2 PU=24.9 LR=31.6 LRA=27.5



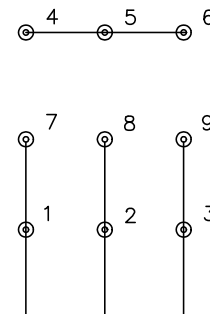
7/23/2024 ACPERF, record # 58092



CD0005

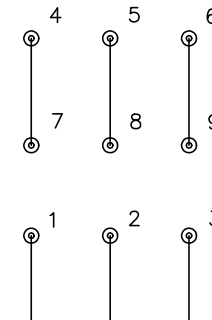


LOW VOLTAGE
(2Y)



LINE

HIGH VOLTAGE
(1Y)



LINE

NOTES:

1. INTERCHANGE ANY TWO LINE LEADS TO REVERSE ROTATION.
2. OPTIONAL THERMOSTATS ARE PROVIDED WHEN SPECIFIED.
3. ACTUAL NUMBER OF INTERNAL PARALLEL CIRCUITS MAY BE A MULTIPLE OF THOSE SHOWN ABOVE.
4. LEAD COLORS ARE OPTIONAL. LEADS MUST ALWAYS BE NUMBERED AS SHOWN.

CD0005

REV. DESC: REVISE TO SHOW OPTIONAL COLORS			
REV. LTR: E	BY: JLP	REVISED: 01/19/99 10:15	TDR: 0171435
S00000		FILE: AAA00005140	MDL: -
		MTL: -	

BALDOR ELECTRIC Co.

3PH, DV, 9 LEADS