



Customer information packet

EM3558T-9

2HP, 1765RPM, 3PH, 60HZ, 143T, 3528M, TEFC, F1

Class - None

Division - Not Applicable

Specifications

Enclosure	TEFC
Frame	145T
Frame Material	Steel
Frequency	60.00 Hz
Haz Area Class and Group	None
Haz Area Division	Not Applicable
Motor Letter Type	Three Phase
Output @ Frequency	2.000 HP @ 60 HZ
Phase	3
Synchronous Speed @ Frequency	1800 RPM @ 60 HZ
Voltage @ Frequency	230.0 V @ 60 HZ 460.0 V @ 60 HZ
Agency Approvals	CSA EEV NEMA PREMIUM NEMA_PREMIUM UR
Ambient Temperature	40 °C
Auxiliary Box	NO AUXILLARY BOX
Auxiliary Box Lead Termination	None
Base Indicator	Rigid
Bearing Grease Type	Polyrex EM (-20F +300F)
Blower	None
Current @ Voltage	5.700 A @ 208.0 V 5.600 A @ 230.0 V 2.800 A @ 460.0 V
Design Code	C
Drip Cover	No Drip Cover
Duty Rating	CONT
Efficiency @ 100% Load	86.5 %
Electrically Isolated Bearing	Not Electrically Isolated
Feedback Device	NO FEEDBACK
Front Shaft Indicator	None

Part detail

Revision	C
Type	AC
Mech. spec.	35E2790
Base	
Status	PRD/A
Elec. spec.	35WGG305
Layout	35LYE2790
Eff. date	01-05-2026
CD Diagram	CD0005
Poles	04
Leads	9#18
Proprietary	False
Created date	03-11-2022

Heater Indicator	No Heater
High Voltage Full Load Amps	2.8 a
Insulation Class	F
Inverter Code	Not Inverter
KVA Code	L
Lifting Lugs	No Lifting Lugs
Locked Bearing Indicator	No Locked Bearing
Motor Lead Quantity/Wire Size	9 @ 18 AWG
Motor Lead Termination	Flying Leads
Motor Standards	NEMA
Motor Type	3528M
Mounting Arrangement	F1
Number of Poles	4
Overall Length	13.29 IN
Power Factor	77
Product Family	WP Below Decks Marine Duty
Pulley End Bearing Type	Ball
Pulley Face Code	Standard
Pulley Shaft Indicator	Standard
Rodent Screen	None
Service Factor	1.15
Shaft Diameter	0.875 IN
Shaft Ground Indicator	No Shaft Grounding
Shaft Rotation	Reversible
Shaft Slinger Indicator	Shaft Slinger
Speed	1765 rpm
Speed Code	Single Speed
Starting Method	Direct on line
Thermal Device - Bearing	None
Thermal Device - Winding	None
Vibration Sensor Indicator	No Vibration Sensor
Winding Thermal 1	None
Winding Thermal 2	None

Nameplate

NP1267L									
CAT.NO.	EM3558T-9								
SPEC.	35E2790G305G1								
HP	2								
VOLTS	230/460								
AMP	5.6/2.8								
RPM	1765								
FRAME	145T		HZ	60		PH	3		
SER.F.	1.15	CODE	L	DES	C	CL	F		
NEMA-NOM-EFF	86.5	PF	77						
RATING	40C AMB-CONT								
CC	010A								
DE	6205		ODE	6203					
ENCL	TEFC	SN							
	SFA 6.3/3.15								

AC Induction Motor Performance Data

Record # 87018

Typical performance - not guaranteed values

Winding: 35WGG305-R001		Type: 3528M	Enclosure: TEFC	
Nameplate Data			460 V, 60 Hz: High Voltage Connection	
Rated Output (HP)		2	Full Load Torque	5.95 LB-FT
Volts		230/460	Start Configuration	direct on line
Full Load Amps		5.6/2.8	Breakdown Torque	23.89 LB-FT
R.P.M.		1765	Pull-up Torque	14.35 LB-FT
Hz	60 Phase	3	Locked-rotor Torque	17.35 LB-FT
NEMA Design Code	C KVA Code	L	Starting Current	24.96 A
Service Factor (S.F.)		1.15	No-load Current	1.65 A
NEMA Nom. Eff.	86.5 Power Factor	77	Line-line Res. @ 25°C	9.42 Ω
Rating - Duty		40C AMB-CONT	Temp. Rise @ Rated Load	56°C
S.F. Amps		6.3/3.15	Temp. Rise @ S.F. Load	67°C
			Locked-rotor Power Factor	58.4
			Rotor inertia	0.202 lb-ft ²

Load Characteristics 460 V, 60 Hz, 2 HP

% of Rated Load	25	50	75	100	125	150	S.F.
Power Factor	35	56	69	77	82	85	80
Efficiency	77.6	85.2	87	86.7	85.6	84.1	86
Speed	1792	1784	1776	1767	1758	1747	1762
Line amperes	1.73	1.98	2.35	2.8	3.37	3.94	3.14

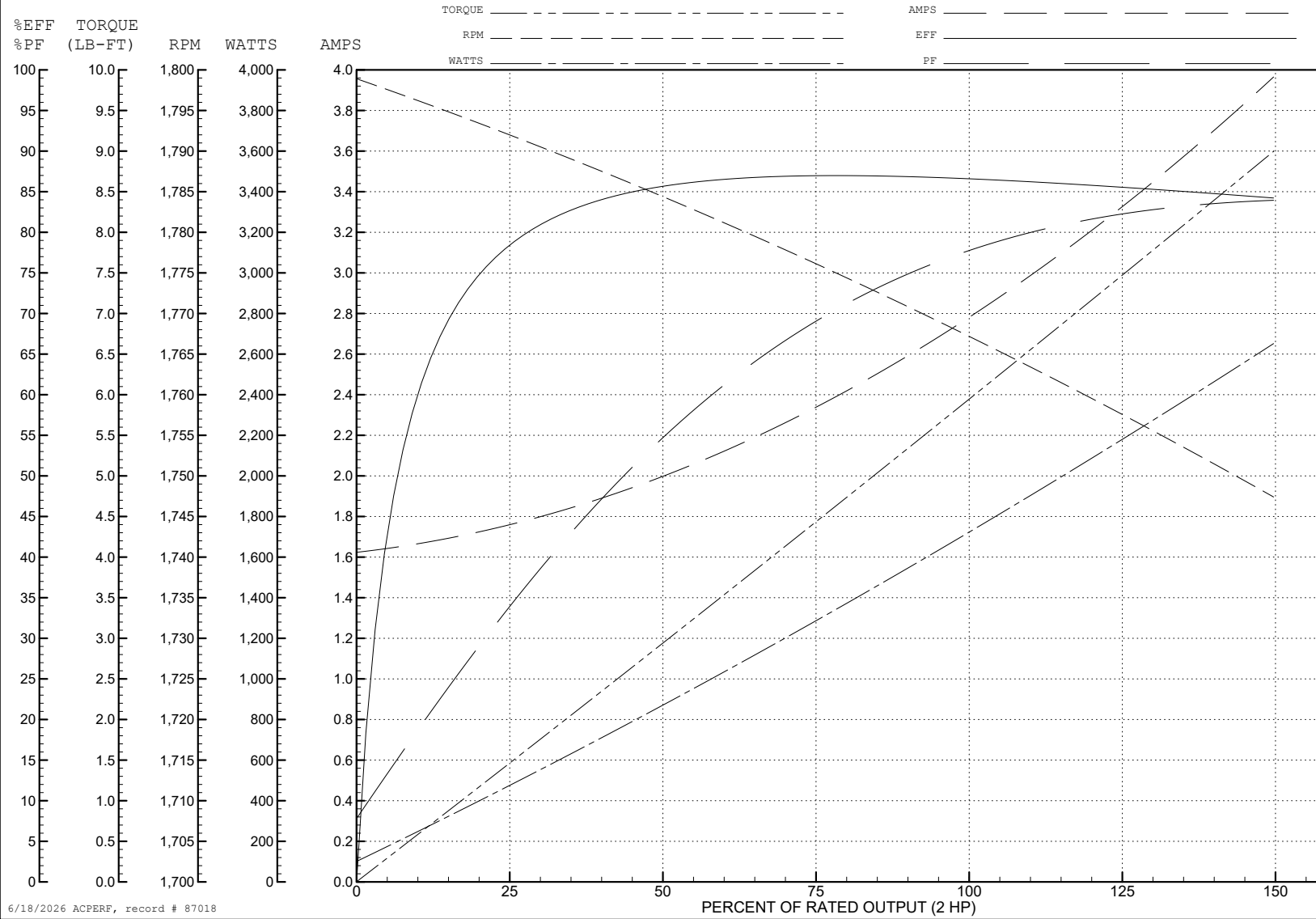
ABB Motors and Mechanical Inc.

WINDING # 35WGG305

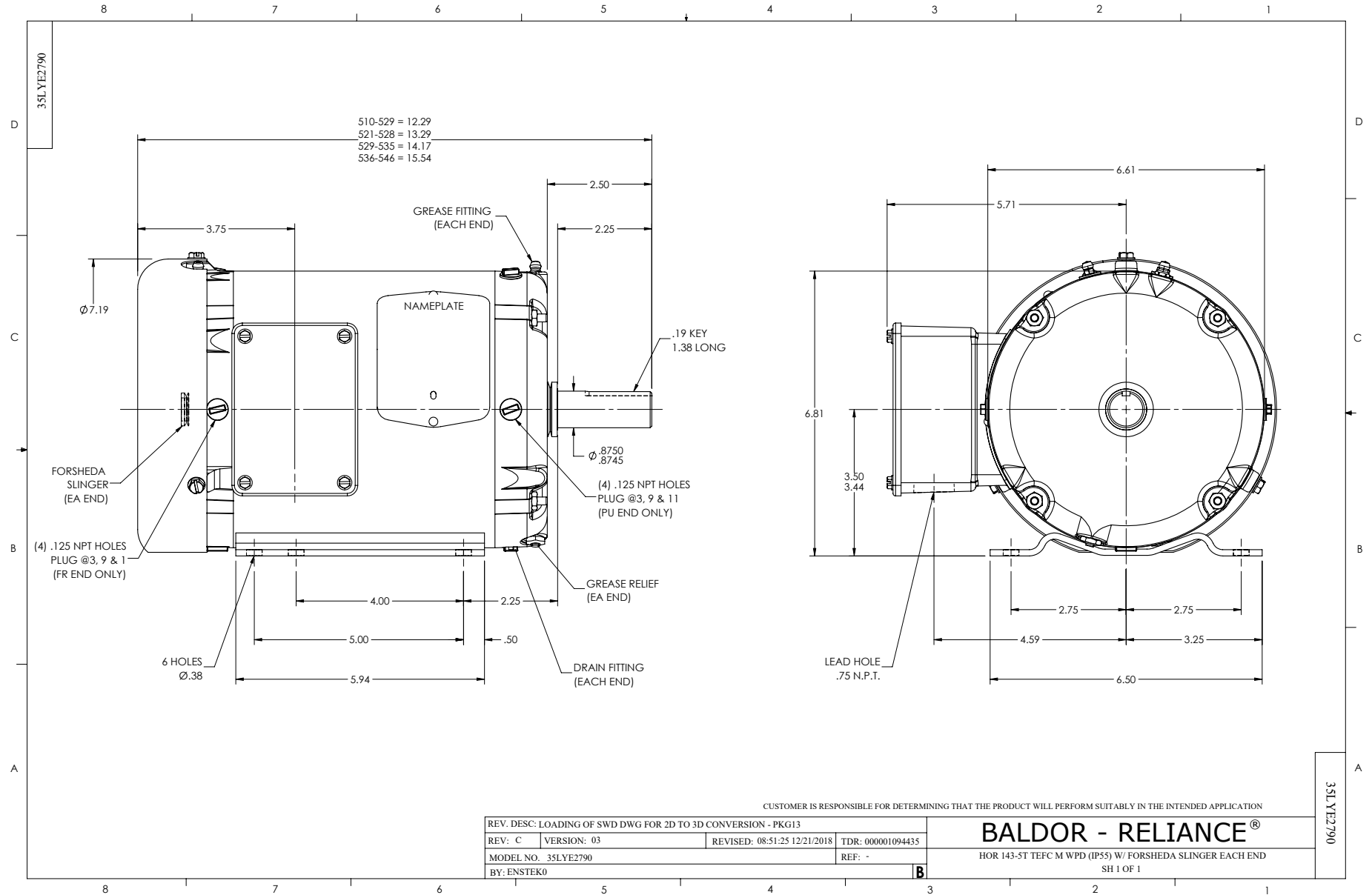
Typical performance - not guaranteed values.

2 HP 3 PH 60 HZ 1765 RPM 460 V 3528M

TORQUES (LB-FT): PO=23.89 PU=14.35 LR=17.35 LRA=24.96



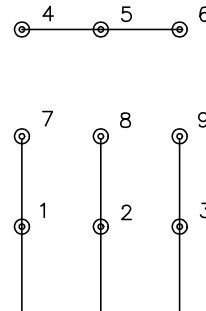
6/18/2026 ACPERF, record # 87018



CD0005

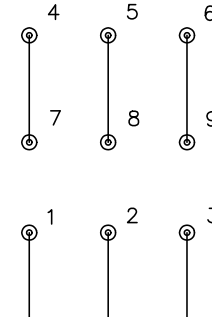


LOW VOLTAGE
(2Y)



LINE

HIGH VOLTAGE
(1Y)



LINE

NOTES:

1. INTERCHANGE ANY TWO LINE LEADS TO REVERSE ROTATION.
2. OPTIONAL THERMOSTATS ARE PROVIDED WHEN SPECIFIED.
3. ACTUAL NUMBER OF INTERNAL PARALLEL CIRCUITS MAY BE A MULTIPLE OF THOSE SHOWN ABOVE.
4. LEAD COLORS ARE OPTIONAL. LEADS MUST ALWAYS BE NUMBERED AS SHOWN.

CD0005

REV. DESC: REVISE TO SHOW OPTIONAL COLORS			
REV. LTR: E	BY: JLP	REVISED: 01/19/99 10:15	TDR: 0171435
S00000		FILE: AAA00005140	MDL: -
		MTL: -	

BALDOR ELECTRIC Co.

3PH, DV, 9 LEADS