



Customer information packet

EM3314T-8

15HP, 3475RPM, 3PH, 60HZ, 215T, 3734M, OPSB, F1

Class - None

Division - Not Applicable

Specifications

Enclosure	OPSB
Frame	215T
Frame Material	Steel
Frequency	60.00 Hz
Haz Area Class and Group	None
Haz Area Division	Not Applicable
Motor Letter Type	Three Phase
Output @ Frequency	15.000 HP @ 60 HZ
Phase	3
Synchronous Speed @ Frequency	3600 RPM @ 60 HZ
Voltage @ Frequency	200.0 V @ 60 HZ
Agency Approvals	CURUSEEV NEMA PREMIUM NEMA_PREMIUM UR CSA EEV
Ambient Temperature	40 °C
Auxillary Box	No Auxillary Box
Auxillary Box Lead Termination	None
Base Indicator	Rigid
Bearing Grease Type	Polyrex EM (-20F +300F)
Blower	None
Current @ Voltage	39.700 A @ 200.0 V
Design Code	B
Drip Cover	No Drip Cover
Duty Rating	CONT
Efficiency @ 100% Load	90.2 %
Electrically Isolated Bearing	Not Electrically Isolated
Feedback Device	NO FEEDBACK
Front Face Code	Standard
Front Shaft Indicator	None
Heater Indicator	No Heater

Part detail

Revision	N
Type	AC
Mech. spec.	37B101
Base	
Status	PRD/A
Elec. spec.	37WGR876
Layout	37LYB101
Eff. date	11-08-2024
CD Diagram	CD0006
Poles	02
Leads	3#8
Proprietary	False
Created date	08-05-2015

High Voltage Full Load Amps	39.7 a
Insulation Class	F
Inverter Code	Not Inverter
KVA Code	G
Lifting Lugs	Standard Lifting Lugs
Locked Bearing Indicator	No Locked Bearing
Motor Lead Exit	Ko Box
Motor Lead Quantity/Wire Size	3 @ 8 AWG
Motor Lead Termination	Flying Leads
Motor Standards	NEMA
Motor Type	3734M
Mounting Arrangement	F1
Number of Poles	2
Overall Length	16.32 IN
Power Factor	90
Product Family	General Purpose
Pulley End Bearing Type	Ball
Pulley Face Code	Standard
Pulley Shaft Indicator	Standard
Rodent Screen	None
Service Factor	1.15
Shaft Diameter	1.375 IN
Shaft Extension Location	Pulley End
Shaft Ground Indicator	No Shaft Grounding
Shaft Rotation	Reversible
Shaft Slinger Indicator	No Slinger
Speed	3475 rpm
Speed Code	Single Speed
Starting Method	Direct on line
Thermal Device - Bearing	None
Thermal Device - Winding	None
Vibration Sensor Indicator	No Vibration Sensor
Winding Thermal 1	None
Winding Thermal 2	None

Nameplate

NP3553L									
CAT.NO.	EM3314T-8								
SPEC	37B101R876G1								
HP	15								
VOLTS	200								
AMPS	39.7								
RPM	3475								
FRAME	215T		HZ	60		PH	3		
SF	1.15	CODE	G	DES	B	CLASS	F		
NEMA NOM. EFF	90.2	PF	90						
RATING	40C AMB-CONT								
CC	010A								
ENCL	OPSB	SER							
DE	6307		ODE	6206					
VPWM INVERTER READY									
CT30-60(2:1) VT3-60(20:1)									

AC Induction Motor Performance Data

Record # 52225

Typical performance - not guaranteed values

Winding: 37WGR876-R001		Type: 3734M		Enclosure: OPSB	
Nameplate Data			200 V, 60 Hz: Single Voltage Motor		
Rated Output (HP)	15	Full Load Torque	22.6 LB-FT		
Volts	200	Start Configuration	direct on line		
Full Load Amps	39.7	Breakdown Torque	91.5 LB-FT		
R.P.M.	3475	Pull-up Torque	28.3 LB-FT		
Hz	60	Locked-rotor Torque	37.3 LB-FT		
NEMA Design Code	B	Starting Current	250 A		
Service Factor (S.F.)	1.15	No-load Current	12.4 A		
NEMA Nom. Eff.	90.2	Line-line Res. @ 25°C	0.128 Ω		
Rating - Duty	40C	Temp. Rise @ Rated Load	46°C		
S.F. Amps	AMB-CONT	Temp. Rise @ S.F. Load	58°C		
		Locked-rotor Power Factor	32.8		
		Rotor inertia	0.31 LB-FT ²		

Load Characteristics 200 V, 60 Hz, 15 HP

% of Rated Load	25	50	75	100	125	150	S.F.
Power Factor	59	79	87	90	89	88	89
Efficiency	90.5	92.6	92.1	91	89.3	87.1	90
Speed	3572	3545	3515	3479	3441	3398	3456
Line amperes	15.2	21.9	30.2	39.6	50.5	62.7	46.1

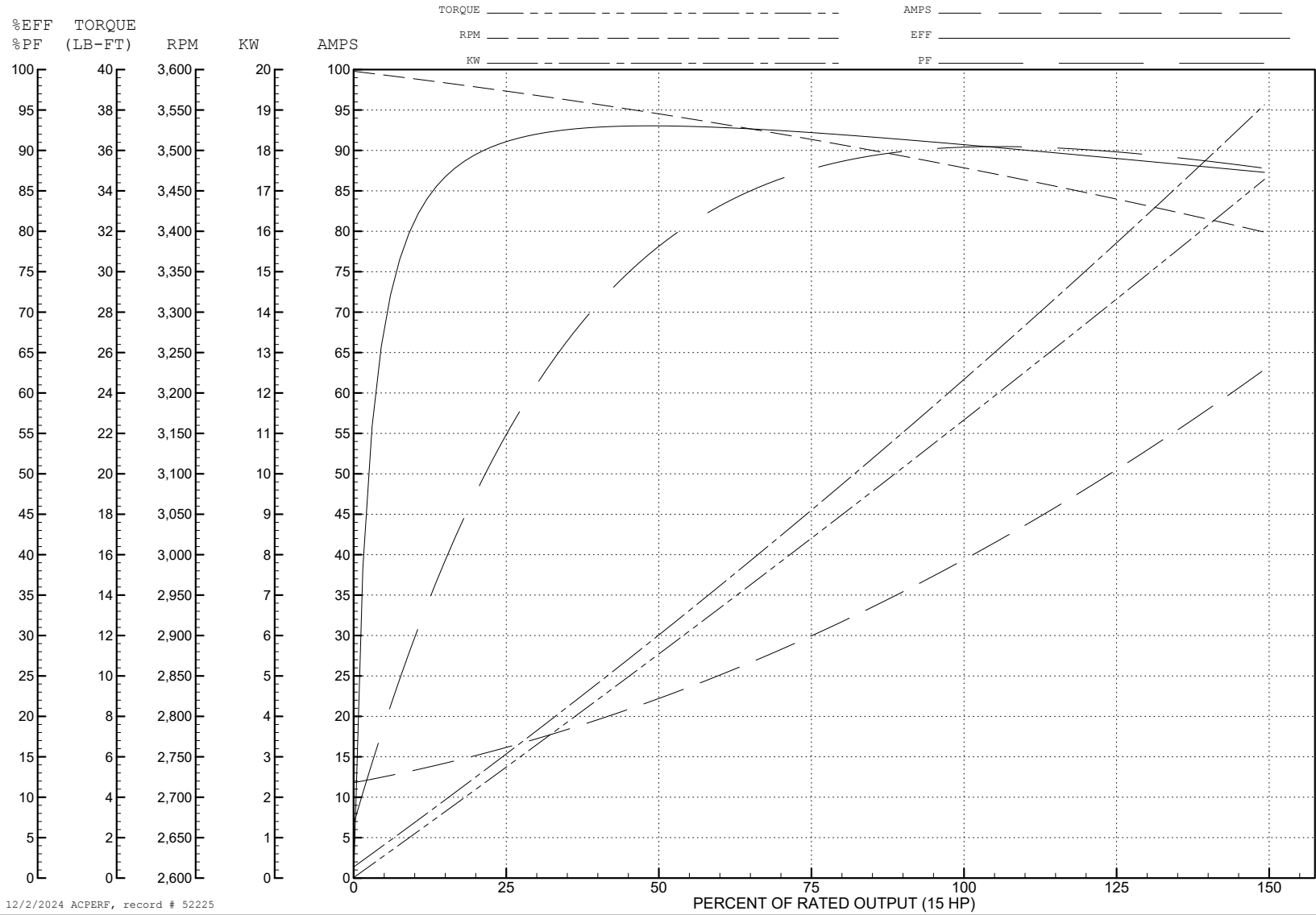
ABB Motors and Mechanical Inc.

WINDING # 37WGR876

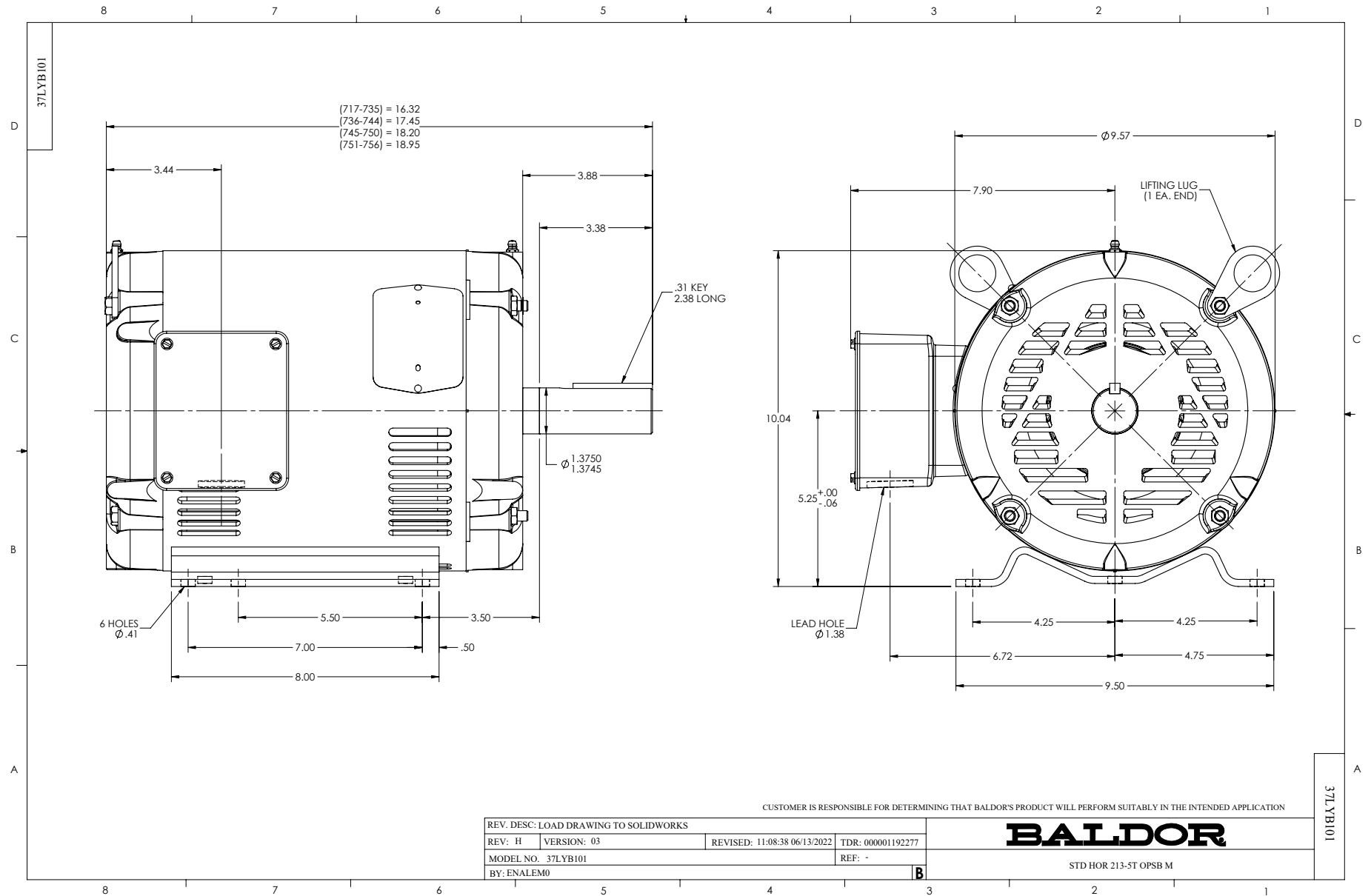
Typical performance - not guaranteed values.

15 HP 3 PH 60 HZ 3475 RPM 200 V 3734M

TORQUES (LB-FT): PO=91.5 PU=28.3 LR=37.3 LRA=250



12/2/2024 ACPERF, record # 52225



CD0006



NOTES:

1. THREE LEAD MOTOR MAY BE EITHER WYE CONNECTED OR DELTA CONNECTED.
2. INTERCHANGE ANY TWO LINE LEADS TO REVERSE ROTATION.
3. OPTIONAL THERMOSTATS ARE PROVIDED WHEN SPECIFIED.
4. ACTUAL NUMBER OF INTERNAL PARALLEL CIRCUITS MAY VARY.
5. LEAD COLORS ARE OPTIONAL. LEADS MUST BE NUMBERED AS SHOWN.

CD0006

REV. DESC: ADD CLASS CONN00000007		
REV. LTR: E	VERSION: 01	TDR: 000001099922
FILE: \AAA\00005\141	REVISED: 10:24:49 02/19/2019	BY: ENBRIRO
MTL: -	© □	

BALDOR - RELIANCE®

3PH, SV, 3 LEADS, WYE OR DELTA CONNECTED

SH 1 of 1