

**BALDOR • RELIANCE**

---

# Customer information packet

## EM3313T-5BG

10HP, 1770RPM, 3PH, 60HZ, 215T, 3740M, OPSB, F1

Class - None

Division - Not Applicable

Copyright © All product information within this document is subject to ABB Motors and Mechanical Inc. copyright © protection, unless otherwise noted.

6/13/2024 1:57:58 AM

## Specifications

Enclosure	OPSB
Frame	215T
Frame Material	Steel
Frequency	60.00 Hz
Haz Area Class and Group	None
Haz Area Division	Not Applicable
Motor Letter Type	Three Phase
Output @ Frequency	10.000 HP @ 60 HZ
Phase	3
Synchronous Speed @ Frequency	1800 RPM @ 60 HZ
Voltage @ Frequency	575.0 V @ 60 HZ
Agency Approvals	UR CSA CSA EEV
Ambient Temperature	40 °C
Auxillary Box	No Auxillary Box
Auxillary Box Lead Termination	None
Base Indicator	Rigid
Bearing Grease Type	Polyrex EM (-20F +300F)
Blower	None
Current @ Voltage	10.000 A @ 575.0 V
Design Code	B
Drip Cover	No Drip Cover
Duty Rating	CONT
Efficiency @ 100% Load	91.7 %
Electrically Isolated Bearing	Not Electrically Isolated
Feedback Device	NO FEEDBACK
Front Face Code	Standard
Front Shaft Indicator	None
Heater Indicator	No Heater
High Voltage Full Load Amps	10.0 a
Insulation Class	H

## Part detail

Revision	M
Type	AC
Mech. spec.	37N346
Base	
Status	PRD/A
Elec. spec.	37WGT932
Layout	37LYN346
Eff. date	05-14-2024
CD Diagram	CD0006
Poles	04
Leads	3#14
Proprietary	False
Created date	09-22-2014

<b>Inverter Code</b>	Inverter Ready
<b>KVA Code</b>	H
<b>Lifting Lugs</b>	Standard Lifting Lugs
<b>Locked Bearing Indicator</b>	Locked Bearing
<b>Motor Lead Exit</b>	Ko Box
<b>Motor Lead Quantity/Wire Size</b>	3 @ 14 AWG
<b>Motor Lead Termination</b>	Flying Leads
<b>Motor Standards</b>	NEMA
<b>Motor Type</b>	3740M
<b>Mounting Arrangement</b>	F1
<b>Number of Poles</b>	4
<b>Overall Length</b>	17.45 IN
<b>Power Factor</b>	82
<b>Product Family</b>	General Purpose
<b>Pulley End Bearing Type</b>	Ball
<b>Pulley Face Code</b>	Standard
<b>Pulley Shaft Indicator</b>	Standard
<b>Rodent Screen</b>	None
<b>Service Factor</b>	1.15
<b>Shaft Diameter</b>	1.375 IN
<b>Shaft Extension Location</b>	Pulley End
<b>Shaft Ground Indicator</b>	Shaft Grounding
<b>Shaft Rotation</b>	Reversible
<b>Shaft Slinger Indicator</b>	No Slinger
<b>Speed</b>	1770 rpm
<b>Speed Code</b>	Single Speed
<b>Starting Method</b>	Direct on line
<b>Thermal Device - Bearing</b>	None
<b>Thermal Device - Winding</b>	None
<b>Vibration Sensor Indicator</b>	No Vibration Sensor
<b>Winding Thermal 1</b>	None
<b>Winding Thermal 2</b>	None

**Nameplate**

<b>NP1259L</b>									
<b>CAT.NO.</b>	EM3313T-5BG								
<b>SPEC.</b>	37N346T932G1								
<b>HP</b>	10								
<b>VOLTS</b>	575								
<b>AMP</b>	10								
<b>RPM</b>	1770								
<b>FRAME</b>	215T		<b>HZ</b>	60		<b>PH</b>	3		
<b>SER.F.</b>	1.15	<b>CODE</b>	H	<b>DES</b>	B	<b>CL</b>	H		
<b>NEMA-NOM-EFF</b>	91.7	<b>PF</b>	82						
<b>RATING</b>	40C AMB-CONT								
<b>CC</b>	010A								
<b>DE</b>	6307		<b>ODE</b>	6206					
<b>ENCL</b>	OPSB	<b>SN</b>							

**AC Induction Motor Performance Data**

Record # 50487

Typical performance - not guaranteed values

Winding: 37WGT932-R005		Type: 3740M	Enclosure: OPSB	
<b>Nameplate Data</b>		<b>575 V, 60 Hz: Single Voltage Motor</b>		
Rated Output (HP)	10	Full Load Torque	29.68 LB-FT	
Volts	575	Start Configuration	direct on line	
Full Load Amps	10	Breakdown Torque	87.58 LB-FT	
R.P.M.	1770	Pull-up Torque	46.92 LB-FT	
Hz	60 Phase	3	Locked-rotor Torque	52.43 LB-FT
NEMA Design Code	B KVA Code	H	Starting Current	71.77 A
Service Factor (S.F.)		1.15	No-load Current	4.43 A
NEMA Nom. Eff.	91.7 Power Factor	82	Line-line Res. @ 25°C	1.71 Ω
Rating - Duty		40C AMB-CONT	Temp. Rise @ Rated Load	34°C
S.F. Amps			Temp. Rise @ S.F. Load	41°C
			Locked-rotor Power Factor	37.7
			Rotor inertia	0.984 LB-FT <sup>2</sup>

**Load Characteristics 575 V, 60 Hz, 10 HP**

% of Rated Load	25	50	75	100	125	150	S.F.
Power Factor	43	66	77	82	85	85	84
Efficiency	87	91.7	92.2	91.7	90.9	89.8	91.2
Speed	1793	1785	1777	1770	1760	1750	1763
Line amperes	4.94	6.26	7.96	10	12.18	14.77	11.3

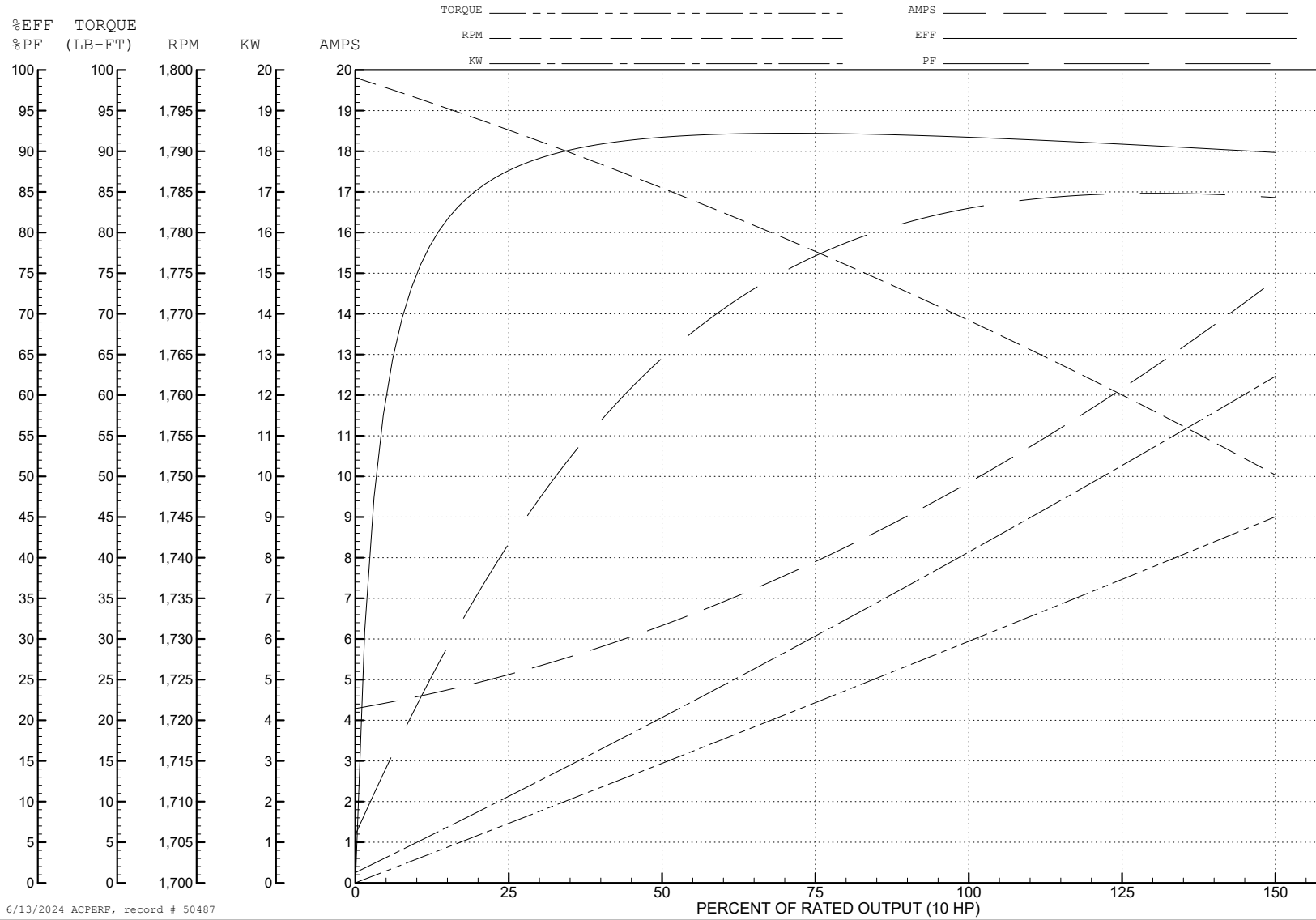
ABB Motors and Mechanical Inc.

WINDING # 37WGT932

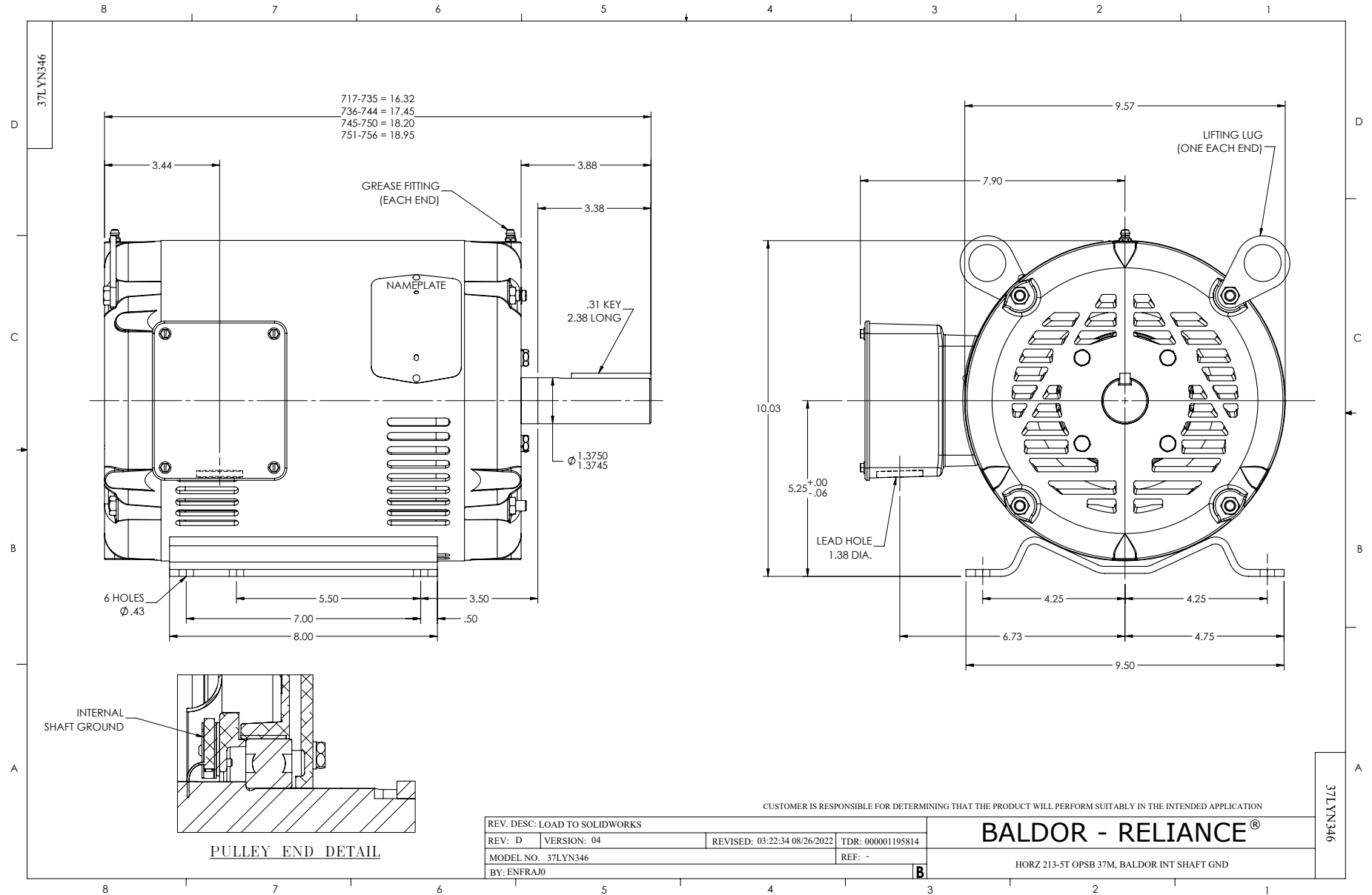
Typical performance - not guaranteed values.

10 HP 3 PH 60 HZ 1770 RPM 575 V 3740M

TORQUES (LB-FT): PO=87.58 PU=46.92 LR=52.43 LRA=71.77



6/13/2024 ACPERF, record # 50487



CD0006



NOTES:

1. THREE LEAD MOTOR MAY BE EITHER WYE CONNECTED OR DELTA CONNECTED.
2. INTERCHANGE ANY TWO LINE LEADS TO REVERSE ROTATION.
3. OPTIONAL THERMOSTATS ARE PROVIDED WHEN SPECIFIED.
4. ACTUAL NUMBER OF INTERNAL PARALLEL CIRCUITS MAY VARY.
5. LEAD COLORS ARE OPTIONAL. LEADS MUST BE NUMBERED AS SHOWN.

CD0006

REV. DESC: ADD CLASS CONN00000007		
REV. LTR: E	VERSION: 01	TDR: 000001099922
FILE: \AAA\00005\141	REVISED: 10:24:49 02/19/2019	BY: ENBRIRO
MTL: -	© □	

**BALDOR - RELIANCE®**

3PH, SV, 3 LEADS, WYE OR DELTA CONNECTED

SH 1 of 1