



Customer information packet

EM3313T-58

10HP, 1460RPM, 3PH, 50HZ, 215T, 3752M, OPSB, F1

Class - None

Division - Not Applicable

Specifications

Enclosure	OPSB
Frame	215T
Frame Material	Steel
Frequency	50.00 Hz
Haz Area Class and Group	None
Haz Area Division	Not Applicable
Motor Letter Type	Three Phase
Output @ Frequency	10.000 HP @ 50 HZ
Phase	3
Synchronous Speed @ Frequency	1500 RPM @ 50 HZ
Voltage @ Frequency	400.0 V @ 50 HZ
Agency Approvals	C UR US CE CURUS IE3 UKCA WEEE
Ambient Temperature	40 °C
Auxillary Box	No Auxillary Box
Auxillary Box Lead Termination	None
Base Indicator	Rigid
Bearing Grease Type	Polyrex EM (-20F +300F)
Blower	None
Current @ Voltage	14.300 A @ 400.0 V
Design Code	B
Drip Cover	No Drip Cover
Duty Rating	CONT
Efficiency @ 100% Load	90.4 %
Electrically Isolated Bearing	Not Electrically Isolated
Feedback Device	NO FEEDBACK
Front Face Code	Standard
Front Shaft Indicator	None

Part detail

Revision	M
Type	AC
Mech. spec.	37B101
Base	
Status	PRD/A
Elec. spec.	37WGR070
Layout	37LYB101
Eff. date	05-01-2024
CD Diagram	CD0382
Poles	04
Leads	6#14
Proprietary	False
Created date	12-08-2014

Heater Indicator	No Heater
High Voltage Full Load Amps	14.3 a
Insulation Class	F
Inverter Code	Not Inverter
KVA Code	J
Lifting Lugs	Standard Lifting Lugs
Locked Bearing Indicator	No Locked Bearing
Motor Lead Exit	Ko Box
Motor Lead Quantity/Wire Size	6 @ 14 AWG
Motor Lead Termination	Flying Leads
Motor Standards	NEMA
Motor Type	3752M
Mounting Arrangement	F1
Number of Poles	4
Overall Length	18.95 IN
Power Factor	84
Product Family	General Purpose
Pulley End Bearing Type	Ball
Pulley Face Code	Standard
Pulley Shaft Indicator	Standard
Rodent Screen	None
RoHS Status	ROHS COMPLIANT
Service Factor	1.15
Shaft Diameter	1.375 IN
Shaft Extension Location	Pulley End
Shaft Ground Indicator	No Shaft Grounding
Shaft Rotation	Reversible
Shaft Slinger Indicator	No Slinger
Speed	1460 rpm
Speed Code	Single Speed
Starting Method	Wye Start - Delta Run
Thermal Device - Bearing	None
Thermal Device - Winding	None
Vibration Sensor Indicator	No Vibration Sensor

Winding Thermal 1

None

Winding Thermal 2

None

Nameplate

NP2716L										
CAT NO	EM3313T-58									
SPEC.	37B101R070G1									
HP	10/7.5KW						PH	3		
VOLTS	400									
AMP	14.3									
R.P.M. (1/MIN)	1460									
FRAME	215T		HZ	50			I.P.	23		
SER.F.	1.15	CODE	J	DES	B	CL	F			
NOM.EFF.	90.4		% (100%)							
PF	84									
RATING	40C AMB-S1 CONT				CC					
DE BRG	6307		ODE	6206						
ENCL	OPSB	SN								
BLANK	IE3-91.6(75%)92.0(50%)									
	IC01 75KG									

AC Induction Motor Performance Data

Record # 48454

Typical performance - not guaranteed values

Winding: 37WGR070-R002		Type: 3752M		Enclosure: TEFC	
Nameplate Data			400 V, 50 Hz: Single Voltage Motor		
Rated Output (HP)	10	Full Load Torque	36.1 LB-FT		
Volts	400	Start Configuration	direct on line		
Full Load Amps	14.3	Breakdown Torque	128 LB-FT		
R.P.M.	1460	Pull-up Torque	42.5 LB-FT		
Hz	50	Locked-rotor Torque	61 LB-FT		
NEMA Design Code	B	Starting Current	108 A		
Service Factor (S.F.)	1.15	No-load Current	5.38 A		
NEMA Nom. Eff.	90.4	Line-line Res. @ 25°C	1 Ω		
Rating - Duty	40C	Temp. Rise @ Rated Load	78°C		
S.F. Amps	AMB-CONT	Temp. Rise @ S.F. Load	99°C		
		Locked-rotor Power Factor	39.6		
		Rotor inertia	1.28 LB-FT ²		

Load Characteristics 400 V, 50 Hz, 10 HP

% of Rated Load	25	50	75	100	125	150	S.F.
Power Factor	48	71	80	84	85	85	85
Efficiency	89.5	92	91.6	90.4	88.8	86.4	89.4
Speed	1492	1483	1473	1461	1449	1433	1454
Line amperes	6.3	8.33	11.1	14.3	17.7	22.1	16.3

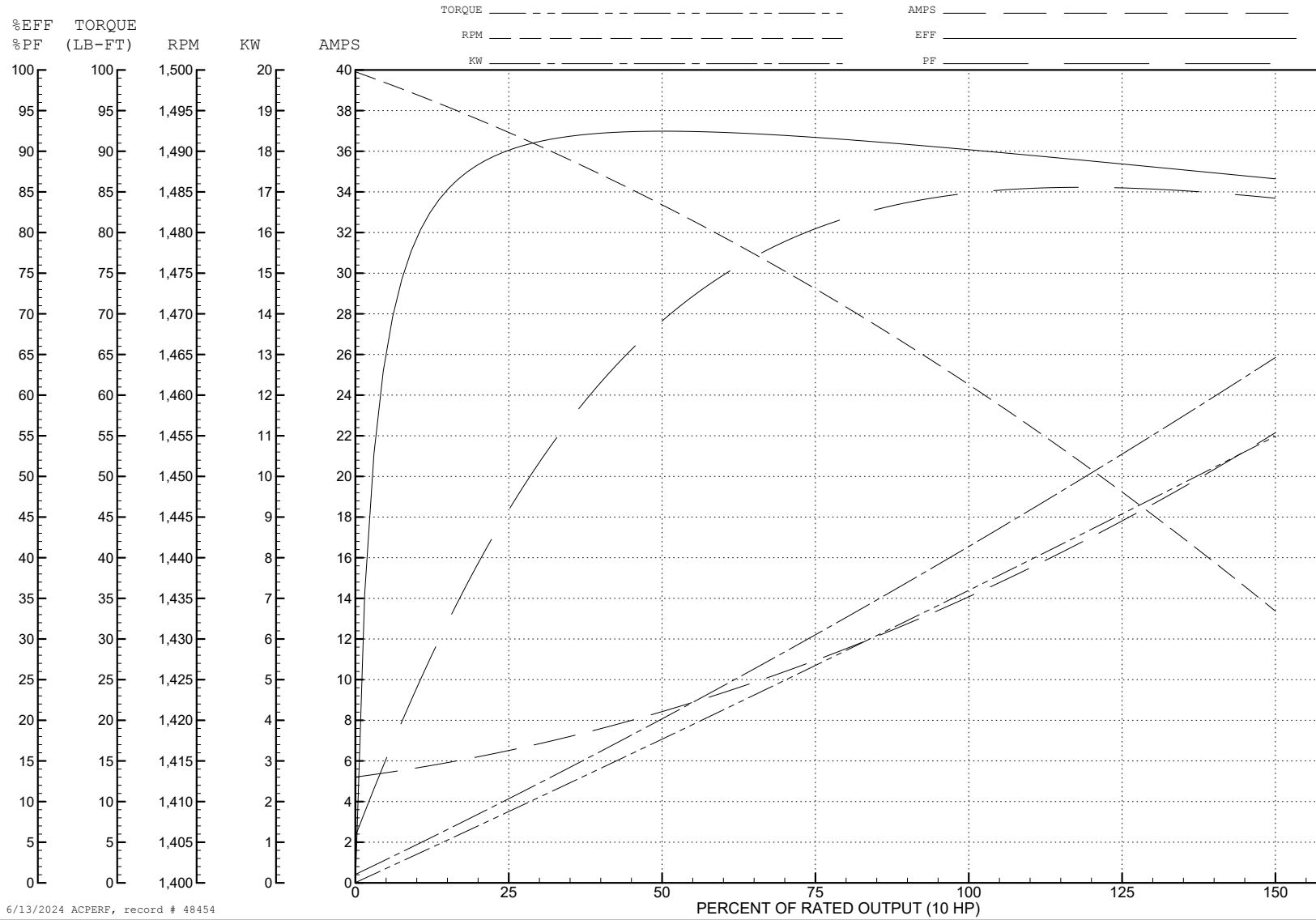
ABB Motors and Mechanical Inc.

WINDING # 37WGR070

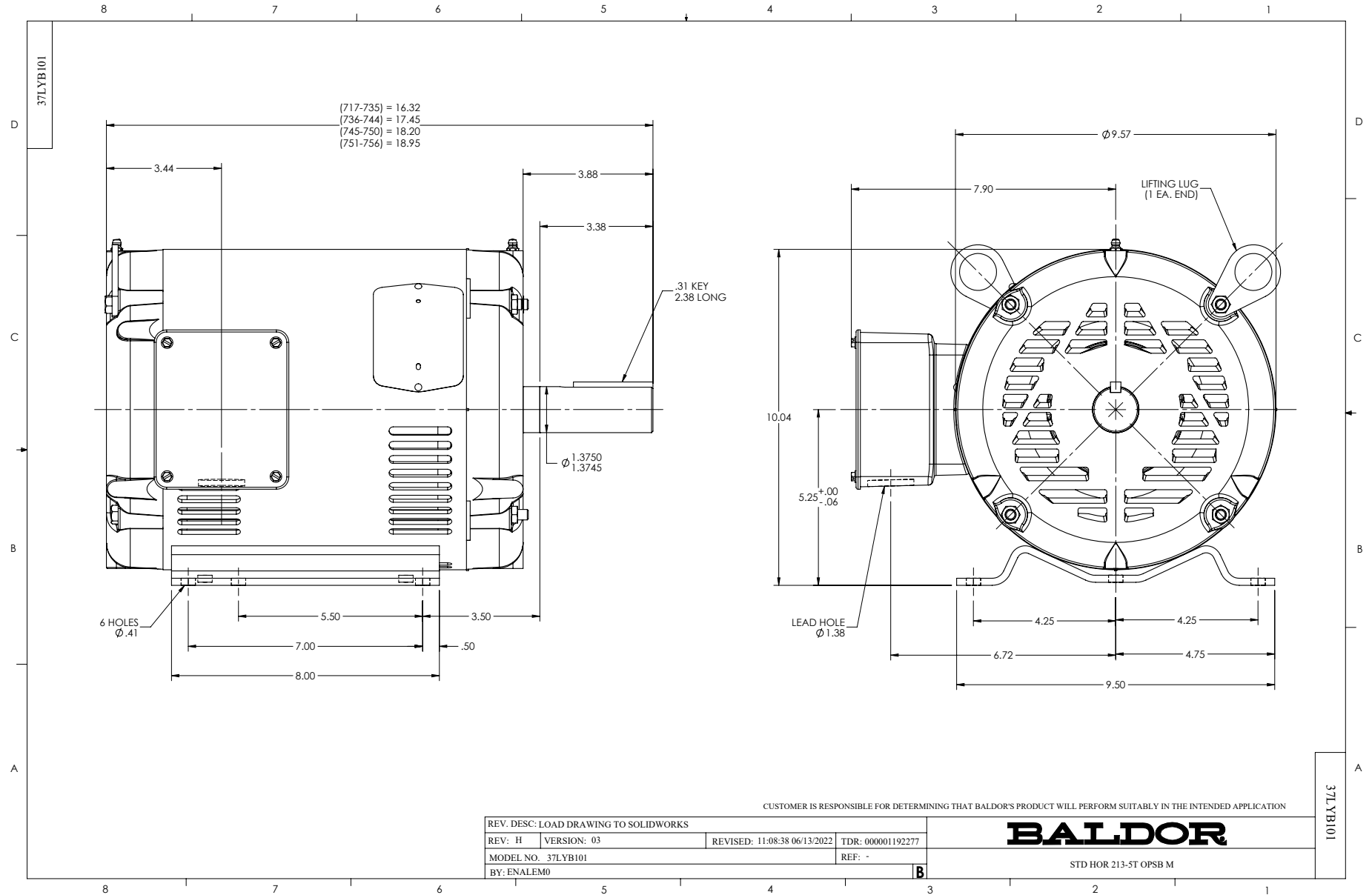
Typical performance - not guaranteed values.

10 HP 3 PH 50 HZ 1460 RPM 400 V 3752M

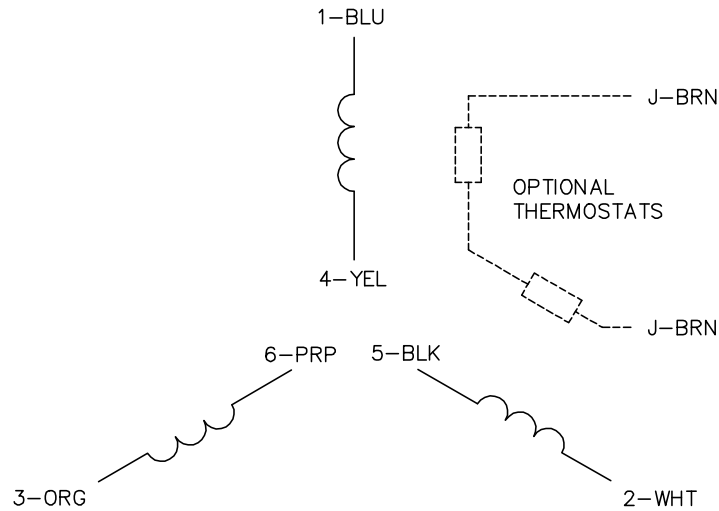
TORQUES (LB-FT): PO=128 PU=42.5 LR=61 LRA=108



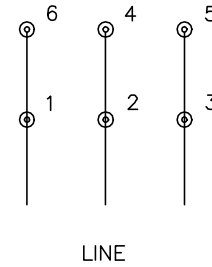
6/13/2024 ACPERF, record # 48454



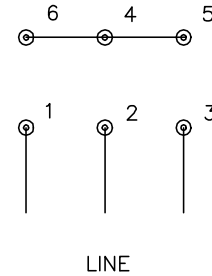
CD0382



RUN CONNECTION (1D)



START CONNECTION (1Y)



NOTES:

1. INTERCHANGE ANY TWO LINE LEADS TO REVERSE ROTATION.
2. OPTIONAL THERMOSTATS ARE PROVIDED WHEN SPECIFIED.
3. ACTUAL NUMBER OF INTERNAL PARALLEL CIRCUITS MAY BE A MULTIPLE OF THOSE SHOWN ABOVE.
4. LEAD COLORS ARE OPTIONAL. LEADS MUST ALWAYS BE NUMBERED AS SHOWN.
5. FOR ACROSS-THE-LINE STARTING, USE 'RUN' CONNECTION.

CD0382

REV. DESC: ADD CLASS CONN00000007		
REV. LTR: F	VERSION: 01	TDR: 000001099922
FILE: \AAA\00005\243	REVISED: 09:05:32 02/19/2019	BY: ENBRIRO
MTL: -		© □

BALDOR - RELIANCE®

3PH, SV, 6 LEADS, Y START/D RUN

SH 1 of 1