

BALDOR • RELIANCE

Customer information packet

EM3312T

10HP, 3485RPM, 3PH, 60HZ, 213T, 3728M, OPSB, F1

Class - None

Division - Not Applicable

Specifications

Enclosure	OPSB
Frame	213T
Frame Material	Steel
Frequency	60.00 Hz
Haz Area Class and Group	None
Haz Area Division	Not Applicable
Motor Letter Type	Three Phase
Output @ Frequency	10.000 HP @ 60 HZ
Phase	3
Synchronous Speed @ Frequency	3600 RPM @ 60 HZ
Voltage @ Frequency	230.0 V @ 60 HZ 460.0 V @ 60 HZ
Agency Approvals	NEMA PREMIUM CSA EEV UR
Ambient Temperature	40 °C
Auxillary Box	No Auxillary Box
Auxillary Box Lead Termination	None
Base Indicator	Rigid
Bearing Grease Type	Polyrex EM (-20F +300F)
Blower	None
Design Code	B
Drip Cover	No Drip Cover
Duty Rating	CONT
Electrically Isolated Bearing	Not Electrically Isolated
Feedback Device	NO FEEDBACK
Front Shaft Indicator	None
Heater Indicator	No Heater
Insulation Class	F
Inverter Code	Inverter Ready
Lifting Lugs	Standard Lifting Lugs
Locked Bearing Indicator	No Locked Bearing

Part detail

Revision	C
Type	AC
Mech. spec.	37F614
Base	
Status	PRD/A
Elec. spec.	37WGL967
Layout	37LYF614
Eff. date	06-11-2024
CD Diagram	CD0005
Poles	02
Leads	9#14
Proprietary	False
Created date	06-28-2023

Motor Lead Quantity/Wire Size	9 @ 14 AWG
Motor Lead Termination	Flying Leads
Motor Standards	NEMA
Motor Type	3728M
Mounting Arrangement	F1
Number of Poles	2
Overall Length	16.32 IN
Product Family	General Purpose
Pulley End Bearing Type	Ball
Pulley Face Code	Standard
Pulley Shaft Indicator	Standard
Rodent Screen	None
Service Factor	1.15
Shaft Diameter	1.375 IN
Shaft Ground Indicator	No Shaft Grounding
Shaft Rotation	Reversible
Shaft Slinger Indicator	No Slinger
Speed	3500 rpm
Speed Code	Single Speed
Starting Method	Direct on line
Thermal Device - Bearing	None
Thermal Device - Winding	None
Vibration Sensor Indicator	No Vibration Sensor
Winding Thermal 1	None
Winding Thermal 2	None

Nameplate

NP3553LUA

CAT.NO.	EM3312T						
SPEC.	37F614L967G1						
HP	10						
VOLTS	230/460						
AMPS	24/12						
RPM	3485						
FRAME	213T		HZ	60		PH	3
SF	1.15	CODE	G	DES	B	CLASS	F
NEMA NOM. EFF	90.2	PF	87				
RATING	40C AMB-CONT						
CC	010A						
ENCL	OPSB	SN					
DE	6307	ODE	6206				
VPWM INVERTER READY							
CT30-60(2:1) VT3-60(20:1)							
USABLE AT	50HZ 10HP 190/380V 28.4/14.2A						SF1.0

Accessories

Part number	Description	Multiplier
37-1404	C FACE KIT	A8

AC Induction Motor Performance Data

Record # 101969

Typical performance - not guaranteed values

Winding: 37WGL967-R001		Type: 3728M		Enclosure: OPSB	
Nameplate Data			460 V, 60 Hz: High Voltage Connection		
Rated Output (HP)	10	Full Load Torque	15.16 LB-FT		
Volts	230/460	Start Configuration	direct on line		
Full Load Amps	24/12	Breakdown Torque	58 LB-FT		
R.P.M.	3485	Pull-up Torque	18.2 LB-FT		
Hz	60 Phase	3	Locked-rotor Torque	26.8 LB-FT	
NEMA Design Code	B	KVA Code	G	Starting Current	73.6 A
Service Factor (S.F.)	1.15		No-load Current	3.99 A	
NEMA Nom. Eff.	90.2	Power Factor	87	Line-line Res. @ 25°C	1.0211 Ω
Rating - Duty	40C AMB-CONT		Temp. Rise @ Rated Load	34°C	
S.F. Amps			Temp. Rise @ S.F. Load	44°C	
			Locked-rotor Power Factor	34.9	
			Rotor inertia	0.255 lb-ft ²	

Load Characteristics 460 V, 60 Hz, 10 HP

% of Rated Load	25	50	75	100	125	150	S.F.
Power Factor	55	76	84	87	88	88	88
Efficiency	89.4	91.7	91.8	90.9	89.3	87.7	89.9
Speed	3569.9	3528.3	3508.4	3481	3443.8	3410.2	3459
Line amperes	4.89	6.8	9.19	11.9	14.9	18.2	13.7

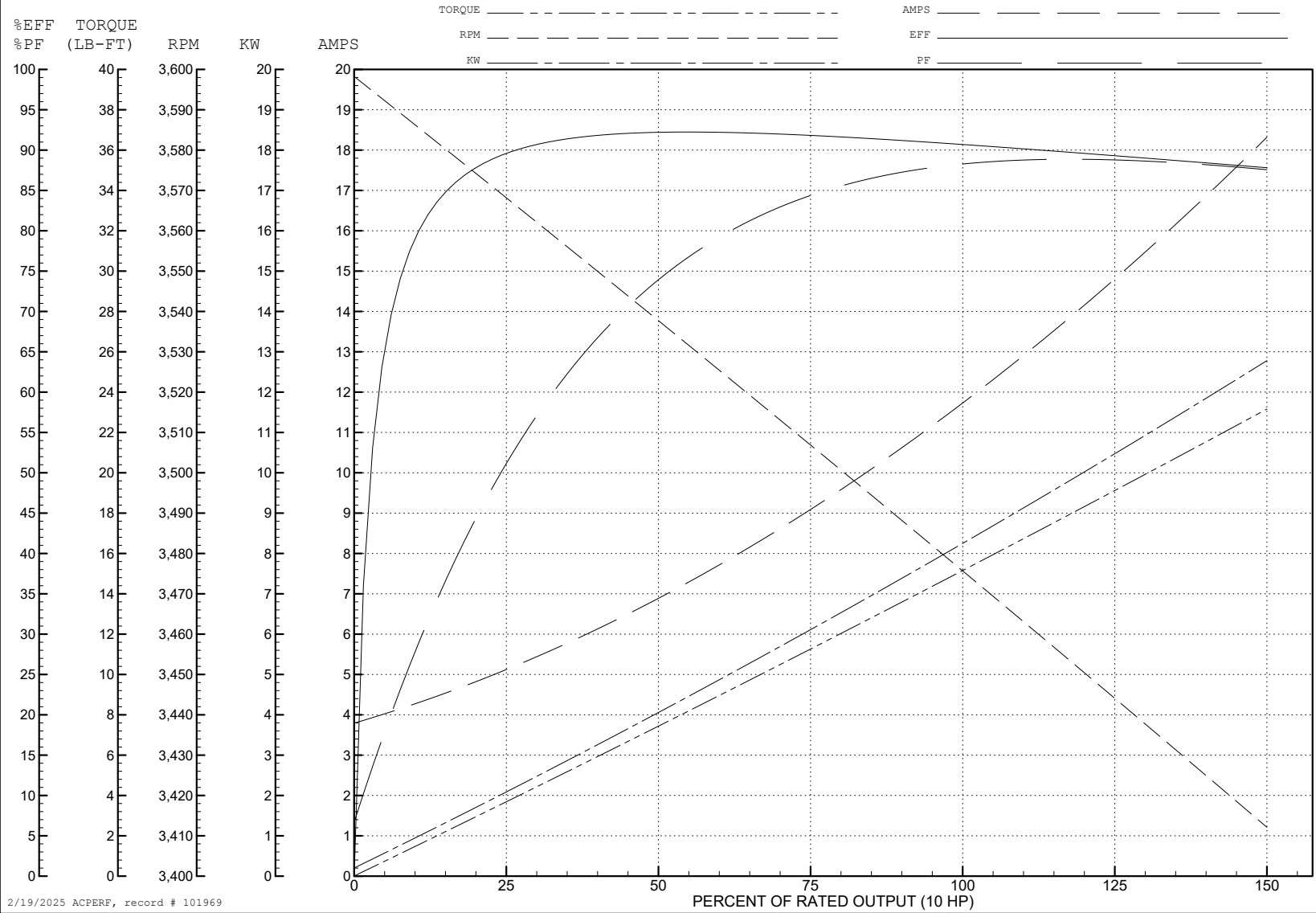
ABB Motors and Mechanical Inc.

WINDING # 37WGL967

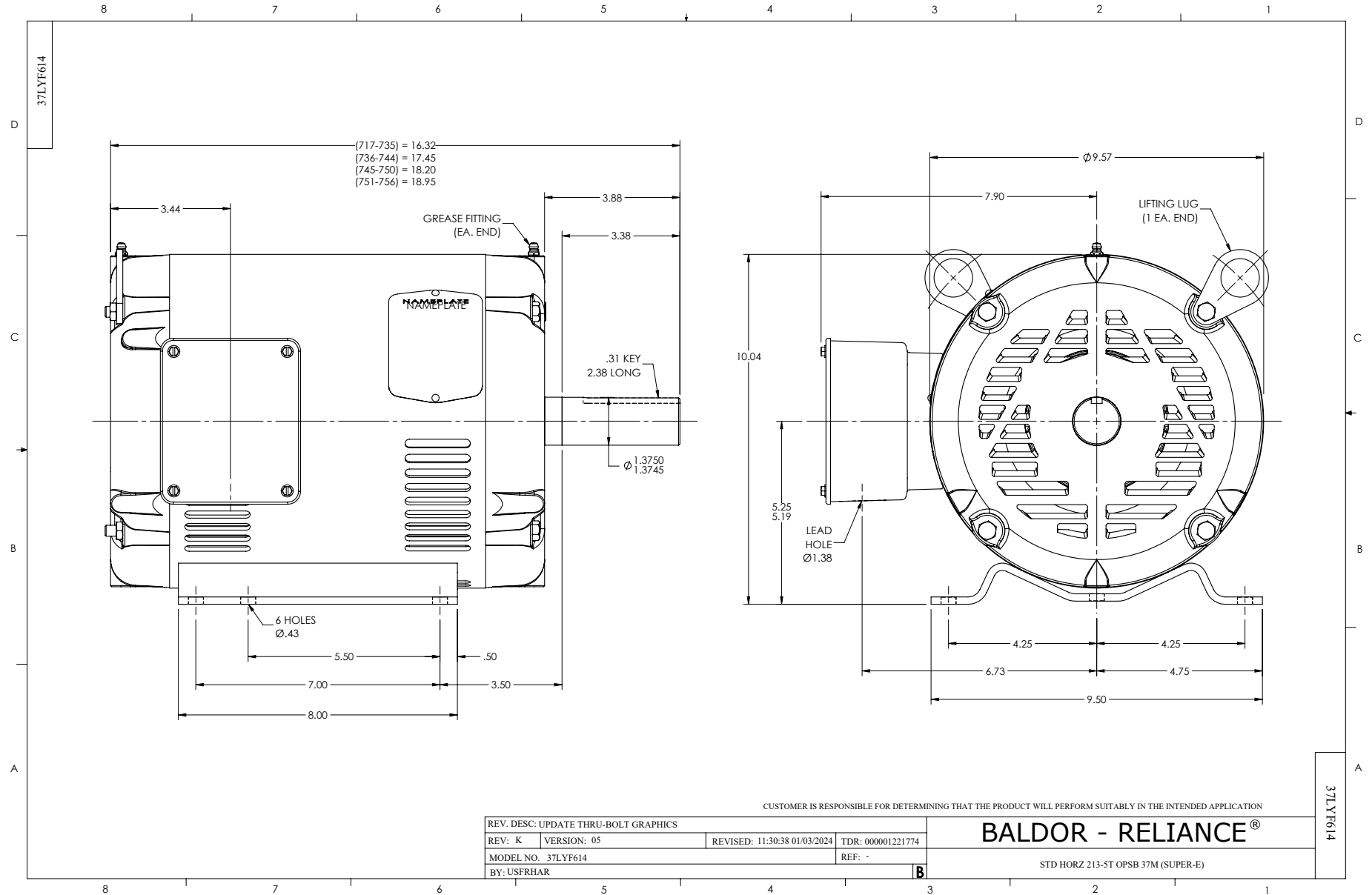
Typical performance - not guaranteed values.

10 HP 3 PH 60 HZ 3485 RPM 460 V 3728M

TORQUES (LB-FT): PO=58 PU=18.2 LR=26.8 LRA=73.6



2/19/2025 ACPERF, record # 101969



CD0005



LOW VOLTAGE
(2Y)



LINE

HIGH VOLTAGE
(1Y)



LINE

NOTES:

1. INTERCHANGE ANY TWO LINE LEADS TO REVERSE ROTATION.
2. OPTIONAL THERMOSTATS ARE PROVIDED WHEN SPECIFIED.
3. ACTUAL NUMBER OF INTERNAL PARALLEL CIRCUITS MAY BE A MULTIPLE OF THOSE SHOWN ABOVE.
4. LEAD COLORS ARE OPTIONAL. LEADS MUST ALWAYS BE NUMBERED AS SHOWN.

CD0005

REV. DESC: REVISE TO SHOW OPTIONAL COLORS			
REV. LTR: E	BY: JLP	REVISED: 01/19/99 10:15	TDR: 0171435
S00000		FILE: AAA00005140	MDL: -
		MTL: -	

BALDOR ELECTRIC Co.

3PH, DV, 9 LEADS