

ABB BALDOR RELIANCE III

Customer information packet

EM3219T

7.5HP, 3480RPM, 3PH, 60HZ, 184T, 3632M, OPSB, F

Class - None

Division - Not Applicable

Specifications

Enclosure	OPSB
Frame	184T
Frame Material	Steel
Frequency	60.00 Hz
Haz Area Class and Group	None
Haz Area Division	Not Applicable
Motor Letter Type	Three Phase
Output @ Frequency	7.500 HP @ 60 HZ
Phase	3
Synchronous Speed @ Frequency	3600 RPM @ 60 HZ
Voltage @ Frequency	230.0 V @ 60 HZ 460.0 V @ 60 HZ
Agency Approvals	NEMA PREMIUM CURUSEEV
Ambient Temperature	40 °C
Auxiliary Box	NO AUXILLARY BOX
Auxiliary Box Lead Termination	None
Base Indicator	Rigid
Bearing Grease Type	Polyrex EM (-20F +300F)
Blower	None
Current @ Voltage	17.600 A @ 230.0 V 8.810 A @ 460.0 V
Design Code	A
Drip Cover	No Drip Cover
Duty Rating	CONT
Efficiency @ 100% Load	88.5 %
Electrically Isolated Bearing	Not Electrically Isolated
Feedback Device	NO FEEDBACK
Front Shaft Indicator	None
Heater Indicator	No Heater
High Voltage Full Load Amps	8.8 a
Insulation Class	F

Part Detail

Revision	A
Type	AC
Mech. spec.	36G548
Base	
Status	PRD/A
Elec. spec.	36WGZ653
Layout	36LYG548
Eff. date	03-31-2026
CD Diagram	CD0005
Poles	02
Leads	9#16
Proprietary	False
Created date	11-06-2025

Inverter Code	Not Inverter
KVA Code	L
Lifting Lugs	Standard Lifting Lugs
Locked Bearing Indicator	No Locked Bearing
Motor Lead Quantity/Wire Size	9 @ 16 AWG
Motor Lead Termination	Flying Leads
Motor Standards	NEMA
Motor Type	3632M
Mounting Arrangement	F1
Number of Poles	2
Overall Length	14.99 IN
Power Factor	90
Product Family	General Purpose
Pulley End Bearing Type	Ball
Pulley Face Code	Standard
Pulley Shaft Indicator	Standard
Rodent Screen	None
RoHS Status	ROHS COMPLIANT
Service Factor	1.15
Shaft Diameter	1.125 IN
Shaft Ground Indicator	No Shaft Grounding
Shaft Rotation	Reversible
Shaft Slinger Indicator	No Slinger
Speed	3480 rpm
Speed Code	Single Speed
Starting Method	Direct on line
Thermal Device - Bearing	None
Thermal Device - Winding	None
Vibration Sensor Indicator	No Vibration Sensor
Winding Thermal 1	None
Winding Thermal 2	None

Nameplate

NP3553LUA									
CAT.NO.	EM3219T								
SPEC.	36G548Z653								
HP	7.5								
VOLTS	230/460								
AMPS	17.6/8.81								
RPM	3480								
FRAME	184T		HZ	60		PH	3		
SF	1.15	CODE	L	DES	A	CLASS	F		
NEMA NOM. EFF	88.5	PF	90						
RATING	40C AMB-CONT								
CC	010A								
ENCL	OPSB	SN							
DE	6206	ODE	6205						
VPWM INVERTER READY	SFA 20.1/10.1								
CT30-60(2:1) VT3-60(20:1)									
USABLE AT	50HZ 7.5HP 190/380V 21.2/10.6A							SF1.0	

Accessories

Part number	Description	Multiplier
36-3403	C FACE KIT	A8
36EP1405A09SP	D-FLANGE KIT	A8

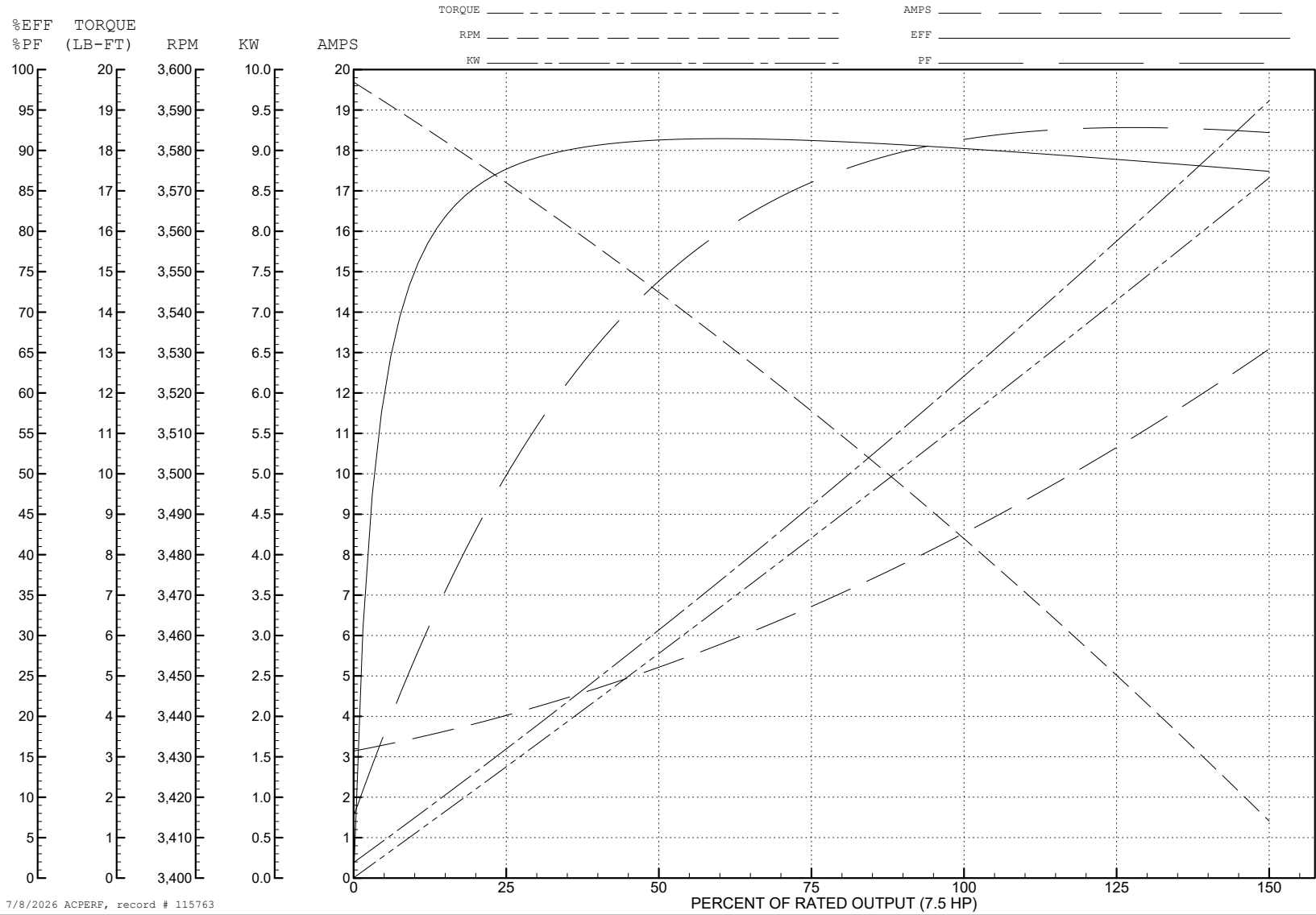
ABB Motors and Mechanical Inc.

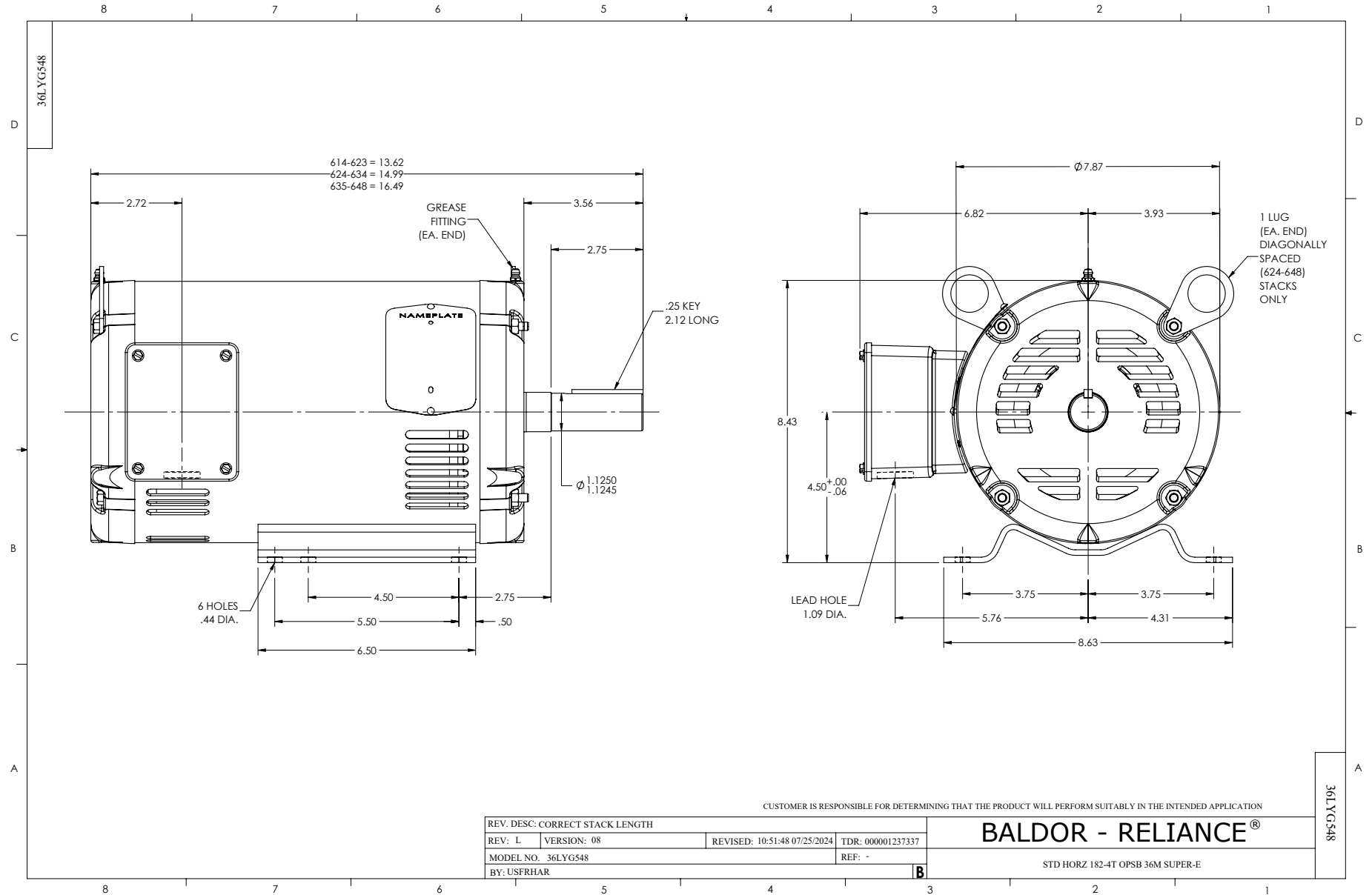
WINDING # 36WGZ653

Typical performance - not guaranteed values.

7.5 HP 3 PH 60 HZ 3480 RPM 460 V 3632M

TORQUES (LB-FT): PO=70.5 PU=39.5 LR=45.1 LRA=88.3





CD0005



LOW VOLTAGE
(2Y)



LINE

HIGH VOLTAGE
(1Y)



LINE

NOTES:

1. INTERCHANGE ANY TWO LINE LEADS TO REVERSE ROTATION.
2. OPTIONAL THERMOSTATS ARE PROVIDED WHEN SPECIFIED.
3. ACTUAL NUMBER OF INTERNAL PARALLEL CIRCUITS MAY BE A MULTIPLE OF THOSE SHOWN ABOVE.
4. LEAD COLORS ARE OPTIONAL. LEADS MUST ALWAYS BE NUMBERED AS SHOWN.

CD0005

REV. DESC: REVISE TO SHOW OPTIONAL COLORS

REV. LTR: E BY: JLP REVISED: 01/19/99 10:15 TDR: 0171435

500000

FILE: AAA00005140

MDL: -

MTL: -

BALDOR ELECTRIC Co.

3PH, DV, 9 LEADS