

BALDOR • RELIANCE

Customer information packet

EM3219T-G

7.5HP, 3480RPM, 3PH, 60HZ, 184T, 3632M, OPSB, F

Class - None

Division - Not Applicable

Specifications

Enclosure	OPSB
Frame	184T
Frame Material	Steel
Frequency	60.00 Hz
Haz Area Class and Group	None
Haz Area Division	Not Applicable
Motor Letter Type	Three Phase
Output @ Frequency	7.500 HP @ 60 HZ
Phase	3
Synchronous Speed @ Frequency	3600 RPM @ 60 HZ
Voltage @ Frequency	230.0 V @ 60 HZ 460.0 V @ 60 HZ
Agency Approvals	CSA CSA EEV NEMA PREMIUM UR
Ambient Temperature	40 °C
Auxillary Box	No Auxillary Box
Auxillary Box Lead Termination	None
Base Indicator	Rigid
Bearing Grease Type	Polyrex EM (-20F +300F)
Blower	None
Current @ Voltage	8.700 A @ 460.0 V 18.400 A @ 208.0 V 17.400 A @ 230.0 V
Design Code	A
Drip Cover	No Drip Cover
Duty Rating	CONT
Efficiency @ 100% Load	88.5 %
Electrically Isolated Bearing	Not Electrically Isolated
Feedback Device	NO FEEDBACK
Front Shaft Indicator	None

Part detail

Revision	D
Type	AC
Mech. spec.	36M526
Base	
Status	PRD/A
Elec. spec.	36WGQ034
Layout	36LYM526
Eff. date	06-11-2024
CD Diagram	CD0005
Poles	02
Leads	9#16
Proprietary	False
Created date	12-09-2020

Heater Indicator	No Heater
High Voltage Full Load Amps	8.7 a
Insulation Class	H
Inverter Code	Not Inverter
KVA Code	L
Lifting Lugs	No Lifting Lugs
Locked Bearing Indicator	Locked Bearing
Motor Lead Quantity/Wire Size	9 @ 16 AWG
Motor Lead Termination	Flying Leads
Motor Standards	NEMA
Motor Type	3632M
Mounting Arrangement	F1
Number of Poles	2
Overall Length	15.00 IN
Power Factor	89
Product Family	General Purpose
Pulley End Bearing Type	Ball
Pulley Face Code	Standard
Pulley Shaft Indicator	Standard
Rodent Screen	None
Service Factor	1.15
Shaft Diameter	1.125 IN
Shaft Ground Indicator	Shaft Grounding
Shaft Rotation	Reversible
Shaft Slinger Indicator	No Slinger
Speed	3480 rpm
Speed Code	Single Speed
Starting Method	Direct on line
Thermal Device - Bearing	None
Thermal Device - Winding	None
Vibration Sensor Indicator	No Vibration Sensor
Winding Thermal 1	None
Winding Thermal 2	None

Nameplate

NP3553L									
CAT.NO.	EM3219T-G								
SPEC	36M526Q034G1								
HP	7.5								
VOLTS	230/460								
AMPS	17.4/8.7								
RPM	3480								
FRAME	184T		HZ	60		PH	3		
SF	1.15	CODE	L	DES	A	CLASS	H		
NEMA NOM. EFF	88.5	PF	89						
RATING	40C AMB-CONT								
CC	010A								
ENCL	OPSB	SER							
DE	6206	ODE	6205						
VPWM INVERTER READY									
CT30-60(2:1) VT3-60(20:1)									

AC Induction Motor Performance Data

Record # 85740

Preliminary Data Sheet

Winding: 36WGQ034-RXXX		Type: 3632M		Enclosure: OPSB	
Nameplate Data			460 V, 60 Hz: High Voltage Connection		
Rated Output (HP)	7.5	Full Load Torque	11.3 LB-FT		
Volts	230/460	Start Configuration	direct on line		
Full Load Amps	17.4/8.7	Breakdown Torque	54.3 LB-FT		
R.P.M.	3480	Pull-up Torque	36.1 LB-FT		
Hz	60 Phase	3	Locked-rotor Torque	41.4 LB-FT	
NEMA Design Code	A KVA Code	L	Starting Current	86.3 A	
Service Factor (S.F.)	1.15	No-load Current	3.04 A		
NEMA Nom. Eff.	88.5 Power Factor	89	Line-line Res. @ 25°C	1.69 Ω	
Rating - Duty	40C AMB-CONT	Temp. Rise @ Rated Load	45°C		
S.F. Amps	20/10	Temp. Rise @ S.F. Load	61°C		
		Locked-rotor Power Factor	63.2		
		Rotor inertia	0.143 lb-ft ²		

Load Characteristics 460 V, 60 Hz, 7.5 HP

% of Rated Load	25	50	75	100	125	150	S.F.
Power Factor	58	80	87	91	93	93	92
Efficiency	81.7	87.9	89	88.6	87.6	86.1	88
Speed	3572	3543	3513	3478	3442	3403	3457
Line amperes	3.68	4.98	6.77	8.66	10.8	13.1	9.9

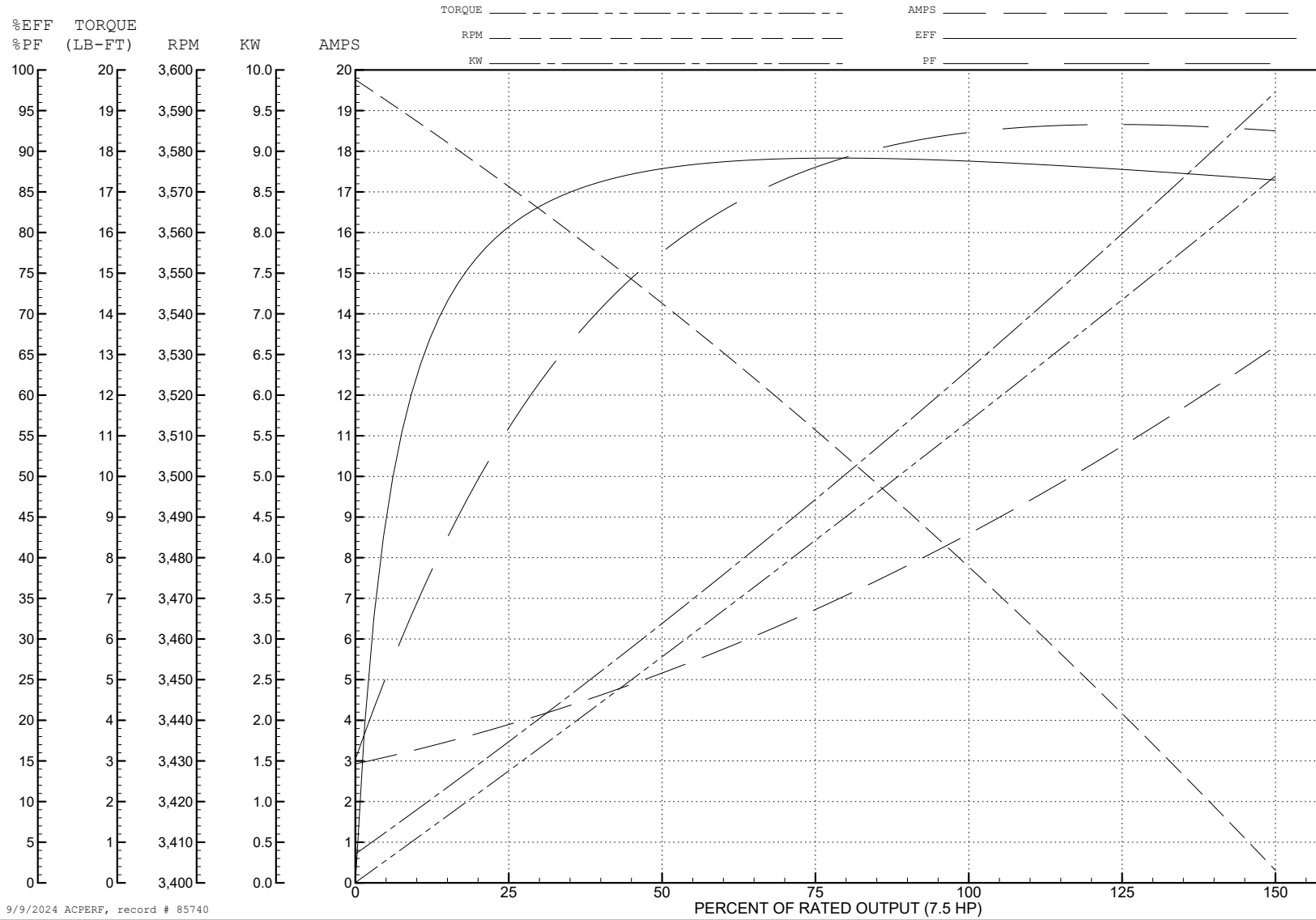
ABB Motors and Mechanical Inc.

WINDING # 36WGQ034

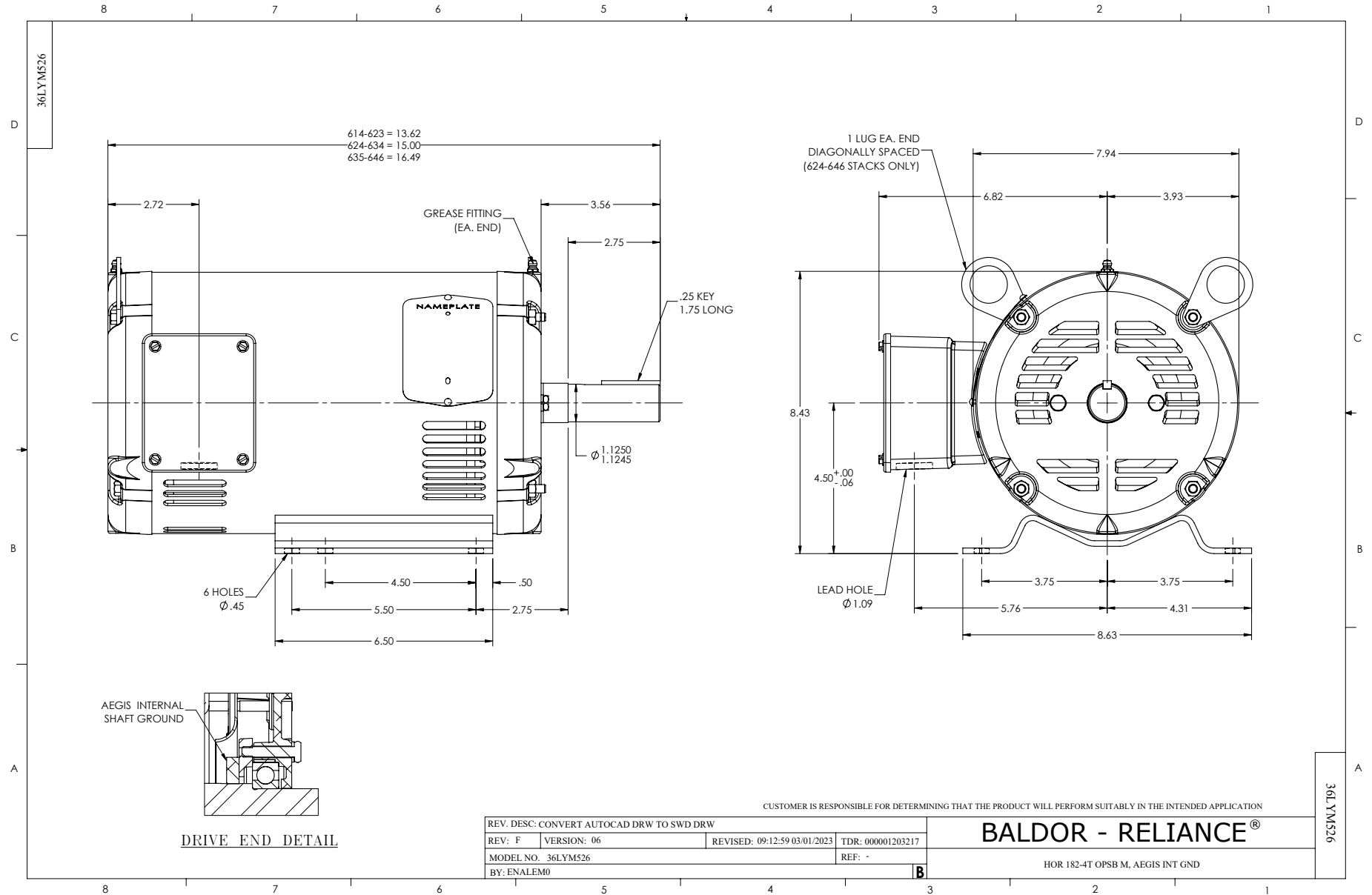
Typical performance - not guaranteed values.

7.5 HP 3 PH 60 HZ 3480 RPM 460 V 3632M

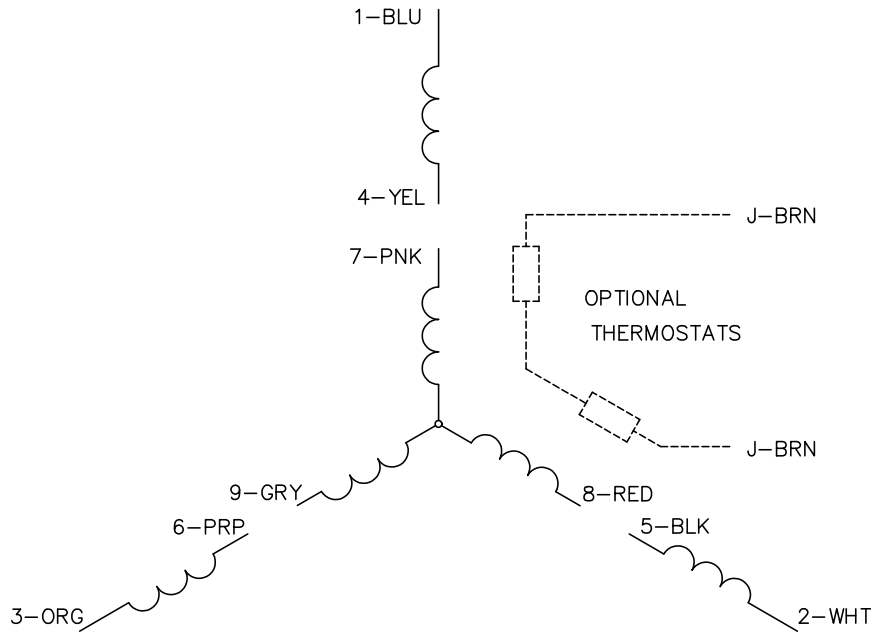
TORQUES (LB-FT): PO=54.3 PU=36.1 LR=41.4 LRA=86.3



9/9/2024 ACPERF, record # 85740



CD0005

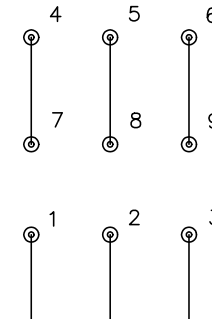


LOW VOLTAGE
(2Y)



LINE

HIGH VOLTAGE
(1Y)



LINE

NOTES:

1. INTERCHANGE ANY TWO LINE LEADS TO REVERSE ROTATION.
2. OPTIONAL THERMOSTATS ARE PROVIDED WHEN SPECIFIED.
3. ACTUAL NUMBER OF INTERNAL PARALLEL CIRCUITS MAY BE A MULTIPLE OF THOSE SHOWN ABOVE.
4. LEAD COLORS ARE OPTIONAL. LEADS MUST ALWAYS BE NUMBERED AS SHOWN.

CD0005

REV. DESC: REVISE TO SHOW OPTIONAL COLORS			
REV. LTR: E	BY: JLP	REVISED: 01/19/99 10:15	TDR: 0171435
S00000		FILE: AAA00005140	MDL: -
		MTL: -	

BALDOR ELECTRIC Co.

3PH, DV, 9 LEADS