

# **ABB BALDOR RELIANCE III**

---

## **Customer information packet** EM3218T-57

5HP, 1450RPM, 3PH, 50HZ, 184T, 3646M, OPEN, F1

Class - None

Division - Not Applicable

**Specifications**

<b>Enclosure</b>	OPEN
<b>Frame</b>	184T
<b>Frame Material</b>	Steel
<b>Frequency</b>	50.00 Hz
<b>Haz Area Class and Group</b>	None
<b>Haz Area Division</b>	Not Applicable
<b>Motor Letter Type</b>	Three Phase
<b>Output @ Frequency</b>	5.000 HP @ 50 HZ
<b>Phase</b>	3
<b>Synchronous Speed @ Frequency</b>	1500 RPM @ 50 HZ
<b>Voltage @ Frequency</b>	230.0 V @ 50 HZ 400.0 V @ 50 HZ
<b>Agency Approvals</b>	CE CURUS IE3 UKCA WEEE C UR US
<b>Ambient Temperature</b>	40 °C
<b>Auxiliary Box</b>	NO AUXILLARY BOX
<b>Auxiliary Box Lead Termination</b>	None
<b>Base Indicator</b>	Rigid
<b>Bearing Grease Type</b>	Polyrex EM (-20F +300F)
<b>Blower</b>	None
<b>Current @ Voltage</b>	8.000 A @ 400.0 V 14.000 A @ 230.0 V
<b>Design Code</b>	B
<b>Drip Cover</b>	No Drip Cover
<b>Duty Rating</b>	CONT
<b>Efficiency @ 100% Load</b>	88.4 %
<b>Electrically Isolated Bearing</b>	Not Electrically Isolated
<b>Feedback Device</b>	NO FEEDBACK

**Part Detail**

<b>Revision</b>	G
<b>Type</b>	AC
<b>Mech. spec.</b>	36B001
<b>Base</b>	
<b>Status</b>	PRD/A
<b>Elec. spec.</b>	36WGR998
<b>Layout</b>	36LYB001
<b>Eff. date</b>	10-30-2025
<b>CD Diagram</b>	CD0022
<b>Poles</b>	04
<b>Leads</b>	6#14
<b>Proprietary</b>	False
<b>Created date</b>	12-22-2015

<b>Front Face Code</b>	Standard
<b>Front Shaft Indicator</b>	None
<b>Heater Indicator</b>	No Heater
<b>High Voltage Full Load Amps</b>	8.0 a
<b>Insulation Class</b>	F
<b>Inverter Code</b>	Not Inverter
<b>IP Rating</b>	NONE
<b>KVA Code</b>	K
<b>Lifting Lugs</b>	No Lifting Lugs
<b>Locked Bearing Indicator</b>	No Locked Bearing
<b>Motor Lead Exit</b>	Ko Box
<b>Motor Lead Quantity/Wire Size</b>	6 @ 14 AWG
<b>Motor Lead Termination</b>	Flying Leads
<b>Motor Standards</b>	NEMA
<b>Motor Type</b>	3646M
<b>Mounting Arrangement</b>	F1
<b>Number of Poles</b>	4
<b>Overall Length</b>	16.50 IN
<b>Power Factor</b>	75
<b>Product Family</b>	General Purpose
<b>Pulley End Bearing Type</b>	Ball
<b>Pulley Face Code</b>	Standard
<b>Pulley Shaft Indicator</b>	Standard
<b>Rodent Screen</b>	None
<b>RoHS Status</b>	ROHS COMPLIANT
<b>Service Factor</b>	1.15
<b>Shaft Diameter</b>	1.125 IN
<b>Shaft Extension Location</b>	Pulley End
<b>Shaft Ground Indicator</b>	No Shaft Grounding
<b>Shaft Rotation</b>	Reversible
<b>Shaft Slinger Indicator</b>	No Slinger
<b>Speed</b>	1450 rpm
<b>Speed Code</b>	Single Speed
<b>Starting Method</b>	Direct on line

<b>Thermal Device - Bearing</b>	<b>None</b>
<b>Thermal Device - Winding</b>	<b>None</b>
<b>Vibration Sensor Indicator</b>	<b>No Vibration Sensor</b>
<b>Winding Thermal 1</b>	<b>None</b>
<b>Winding Thermal 2</b>	<b>None</b>

**Nameplate**

<b>NP2716L</b>										
<b>CAT NO</b>	EM3218T-57									
<b>SPEC.</b>	36B001R998G1									
<b>HP</b>	5/3.7KW						<b>PH</b>	3		
<b>VOLTS</b>	230/400									
<b>AMP</b>	14/8									
<b>R.P.M. (1/MIN)</b>	1450									
<b>FRAME</b>	184T		<b>HZ</b>	50			<b>I.P.</b>	23		
<b>SER.F.</b>	1.15	<b>CODE</b>	K	<b>DES</b>	B	<b>CL</b>	F			
<b>NOM.EFF.</b>	88.4		<b>% (100%)</b>							
<b>PF</b>	75									
<b>RATING</b>	40C AMB-CONT				<b>CC</b>					
<b>DE BRG</b>	6206		<b>ODE</b>	6205						
<b>ENCL</b>	OPEN	<b>SN</b>								
<b>BLANK</b>	IE3 89.0(75%)88.0(50%)									
	46KG IC01									

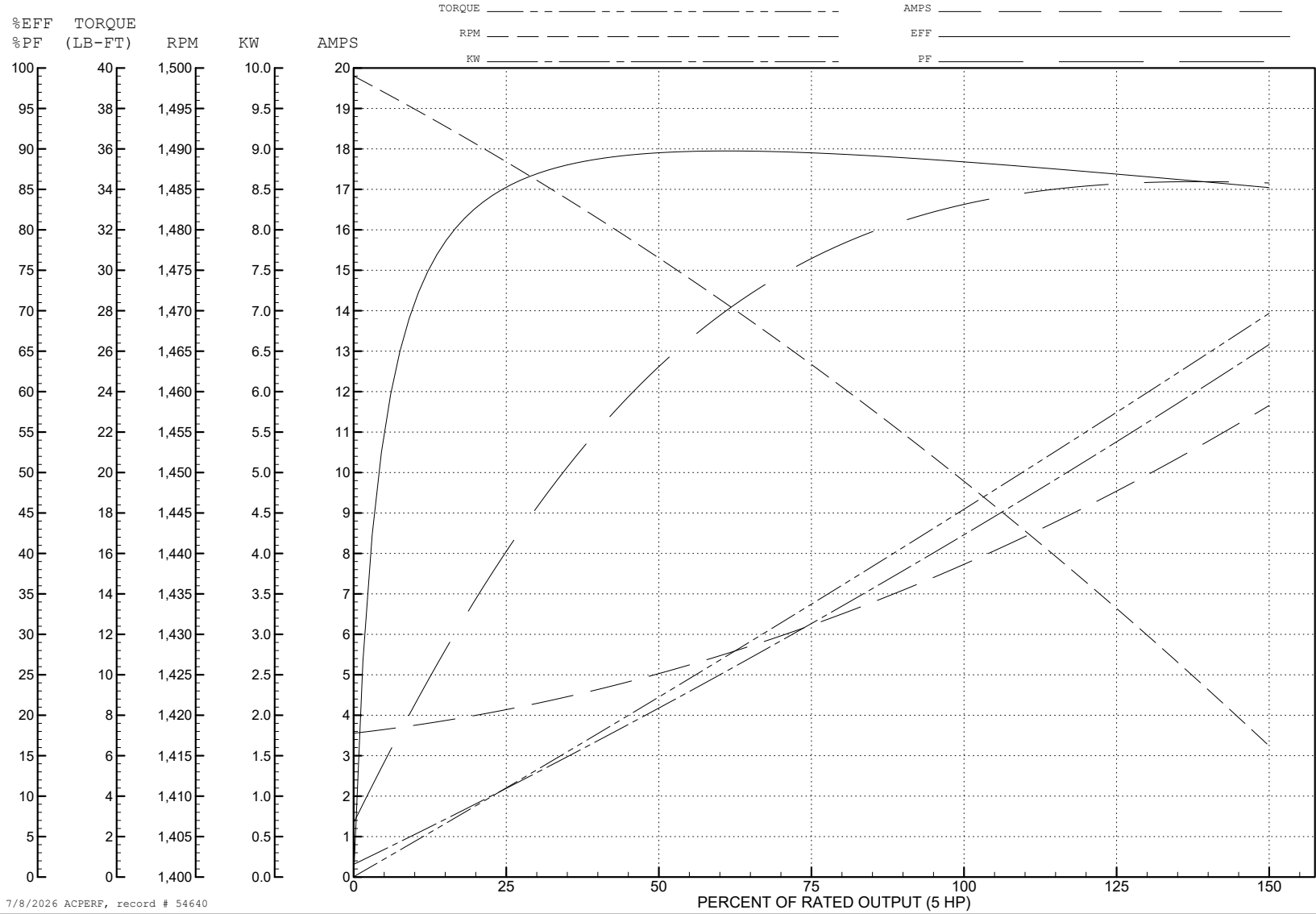
ABB Motors and Mechanical Inc.

WINDING # 36WGR998

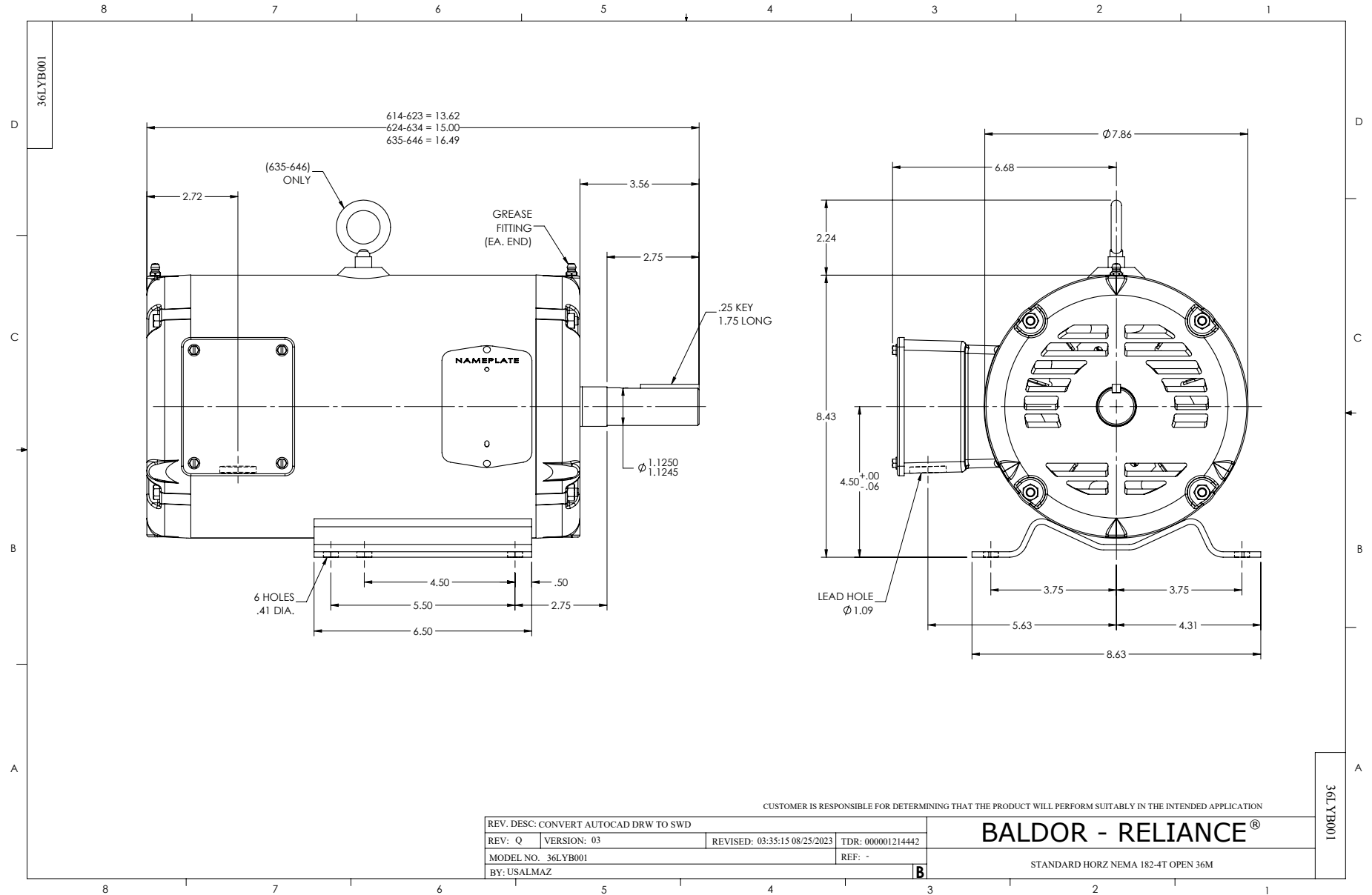
Typical performance - not guaranteed values.

5 HP 3 PH 50 HZ 1450 RPM 380 V 3646M

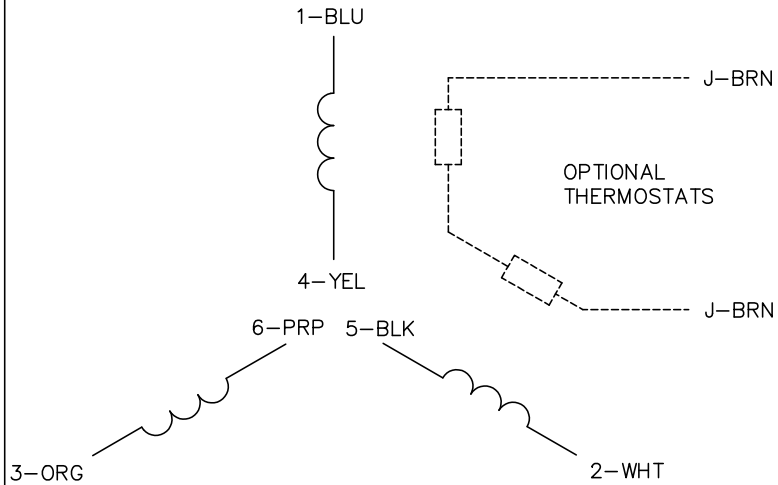
TORQUES (LB-FT) : PO=67.85 PU=35.59 LR=43.26 LRA=57.27



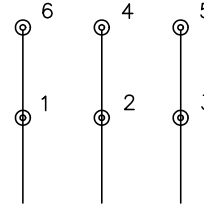
7/8/2026 ACPERF, record # 54640



CD0022

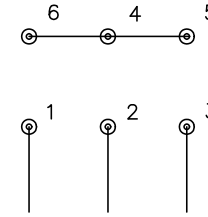


LOW VOLTAGE  
(1D)



LINE

HIGH VOLTAGE  
(1Y)



LINE

NOTES:

1. INTERCHANGE ANY TWO LINE LEADS TO REVERSE ROTATION.
2. OPTIONAL THERMOSTATS ARE PROVIDED WHEN SPECIFIED.
3. ACTUAL NUMBER OF INTERNAL PARALLEL CIRCUITS MAY BE A MULTIPLE OF THOSE SHOWN ABOVE.
4. LEAD COLORS ARE OPTIONAL. LEADS MUST ALWAYS BE NUMBERED AS SHOWN.

REV. DESC: REVISE TO SHOW OPTIONAL COLORS			
REV. LTR: F	BY: JLP	REVISED: 01/21/99 3:54	TDR: 0171435
CD0022		FILE: AAA00005144	MDL: -
		MTL: -	

**BALDOR ELECTRIC Co.**

3PH, DV, 6 LEADS, DELTA/WYE CONNECTION

CD0022