



Customer information packet

EM3211T-BG

3HP, 1760RPM, 3PH, 60HZ, 182T, 3628M, OPSB, F1

Class - None

Division - Not Applicable

Specifications

| | |
|--------------------------------|---|
| Enclosure | OPSB |
| Frame | 182T |
| Frame Material | Steel |
| Frequency | 60.00 Hz |
| Haz Area Class and Group | None |
| Haz Area Division | Not Applicable |
| Motor Letter Type | Three Phase |
| Output @ Frequency | 3.000 HP @ 60 HZ |
| Phase | 3 |
| Synchronous Speed @ Frequency | 1800 RPM @ 60 HZ |
| Voltage @ Frequency | 230.0 V @ 60 HZ 460.0 V @ 60 HZ |
| Agency Approvals | CURUSEEV NEMA PREMIUM |
| Ambient Temperature | 40 °C |
| Auxiliary Box | NO AUXILLARY BOX |
| Auxiliary Box Lead Termination | None |
| Base Indicator | Rigid |
| Bearing Grease Type | Polyrex EM (-20F +300F) |
| Blower | None |
| Current @ Voltage | 4.300 A @ 460.0 V 8.500 A @ 208.0 V 8.600 A @ 230.0 V |
| Design Code | B |
| Drip Cover | No Drip Cover |
| Duty Rating | CONT |
| Efficiency @ 100% Load | 89.5 % |
| Electrically Isolated Bearing | Not Electrically Isolated |
| Feedback Device | NO FEEDBACK |
| Front Shaft Indicator | None |
| Heater Indicator | No Heater |
| High Voltage Full Load Amps | 4.3 a |

Part detail

| | |
|--------------|------------|
| Revision | A |
| Type | AC |
| Mech. spec. | 36Q133 |
| Base | |
| Status | PRD/A |
| Elec. spec. | 36WGZ649 |
| Layout | 36LYQ133 |
| Eff. date | 01-12-2026 |
| CD Diagram | CD0005 |
| Poles | 04 |
| Leads | 9#16 |
| Proprietary | False |
| Created date | 11-06-2025 |

| | |
|--------------------------------------|---------------------|
| Insulation Class | H |
| Inverter Code | Inverter Ready |
| KVA Code | K |
| Lifting Lugs | No Lifting Lugs |
| Locked Bearing Indicator | Locked Bearing |
| Motor Lead Quantity/Wire Size | 9 @ 16 AWG |
| Motor Lead Termination | Flying Leads |
| Motor Standards | NEMA |
| Motor Type | 3628M |
| Mounting Arrangement | F1 |
| Number of Poles | 4 |
| Overall Length | 14.99 IN |
| Power Factor | 78 |
| Product Family | General Purpose |
| Pulley End Bearing Type | Ball |
| Pulley Face Code | Standard |
| Pulley Shaft Indicator | Standard |
| Rodent Screen | None |
| RoHS Status | ROHS COMPLIANT |
| Service Factor | 1.15 |
| Shaft Diameter | 1.125 IN |
| Shaft Ground Indicator | Shaft Grounding |
| Shaft Rotation | Reversible |
| Shaft Slinger Indicator | No Slinger |
| Speed | 1760 rpm |
| Speed Code | Single Speed |
| Starting Method | Direct on line |
| Thermal Device - Bearing | None |
| Thermal Device - Winding | None |
| Vibration Sensor Indicator | No Vibration Sensor |
| Winding Thermal 1 | None |
| Winding Thermal 2 | None |

Nameplate

NP3553LUA

| | | | | | | | |
|----------------------------------|----------------------------|-------------|------|------------|---|--------------|-------|
| CAT.NO. | EM3211T-BG | | | | | | |
| SPEC. | 36Q133Z649 | | | | | | |
| HP | 3 | | | | | | |
| VOLTS | 230/460 | | | | | | |
| AMPS | 8.6/4.3 | | | | | | |
| RPM | 1760 | | | | | | |
| FRAME | 182T | HZ | 60 | PH | 3 | | |
| SF | 1.15 | CODE | K | DES | B | CLASS | H |
| NEMA NOM. EFF | 89.5 | PF | 78 | | | | |
| RATING | 40C AMB-CONT | | | | | | |
| CC | 010A | | | | | | |
| ENCL | OPSB | SN | | | | | |
| DE | 6206 | ODE | 6205 | | | | |
| VPWM INVERTER READY | SFA 9.6/4.8 | | | | | | |
| CT30-60(2:1) VT3-60(20:1) | | | | | | | |
| USABLE AT | 50HZ 3HP 190/380V 9.8/4.9A | | | | | | SF1.0 |

AC Induction Motor Performance Data

Record # 115739

Typical performance - not guaranteed values

| Winding: 36WGZ649-R001 | | Type: 3628M | | Enclosure: OPSB | |
|-------------------------------|--------------------------|----------------------------|--|------------------------|--|
| Nameplate Data | | | 460 V, 60 Hz: High Voltage Connection | | |
| Rated Output (HP) | 3 | Full Load Torque | 8.953 LB-FT | | |
| Volts | 230/460 | Start Configuration | direct on line | | |
| Full Load Amps | 8.6/4.3 | Breakdown Torque | 35.1 LB-FT | | |
| R.P.M. | 1760 | Pull-up Torque | 19.1 LB-FT | | |
| Hz | 60 Phase | 3 | Locked-rotor Torque | 21.2 LB-FT | |
| NEMA Design Code | B KVA Code | K | Starting Current | 30.9 A | |
| Service Factor (S.F.) | | 1.15 | No-load Current | 2.49 A | |
| NEMA Nom. Eff. | 89.5 Power Factor | 78 | Line-line Res. @ 25°C | 4.2111 Ω | |
| Rating - Duty | | 40C AMB-CONT | Temp. Rise @ Rated Load | 25°C | |
| S.F. Amps | | 9.6/4.8 | Temp. Rise @ S.F. Load | 30°C | |
| | | | Locked-rotor Power Factor | 44.1 | |

Load Characteristics 460 V, 60 Hz, 3 HP

| % of Rated Load | 25 | 50 | 75 | 100 | 125 | 150 | S.F. |
|------------------------|-----------|-----------|-----------|------------|------------|------------|-------------|
| Power Factor | 32 | 52 | 66 | 73 | 78 | 81 | 76 |
| Efficiency | 82.9 | 88.8 | 90.2 | 90.1 | 89.4 | 88.2 | 89.7 |
| Speed | 1791.6 | 1783 | 1773.2 | 1763.4 | 1753.4 | 1742 | 1757 |
| Line amperes | 2.65 | 3.04 | 3.59 | 4.26 | 5.03 | 5.89 | 4.72 |

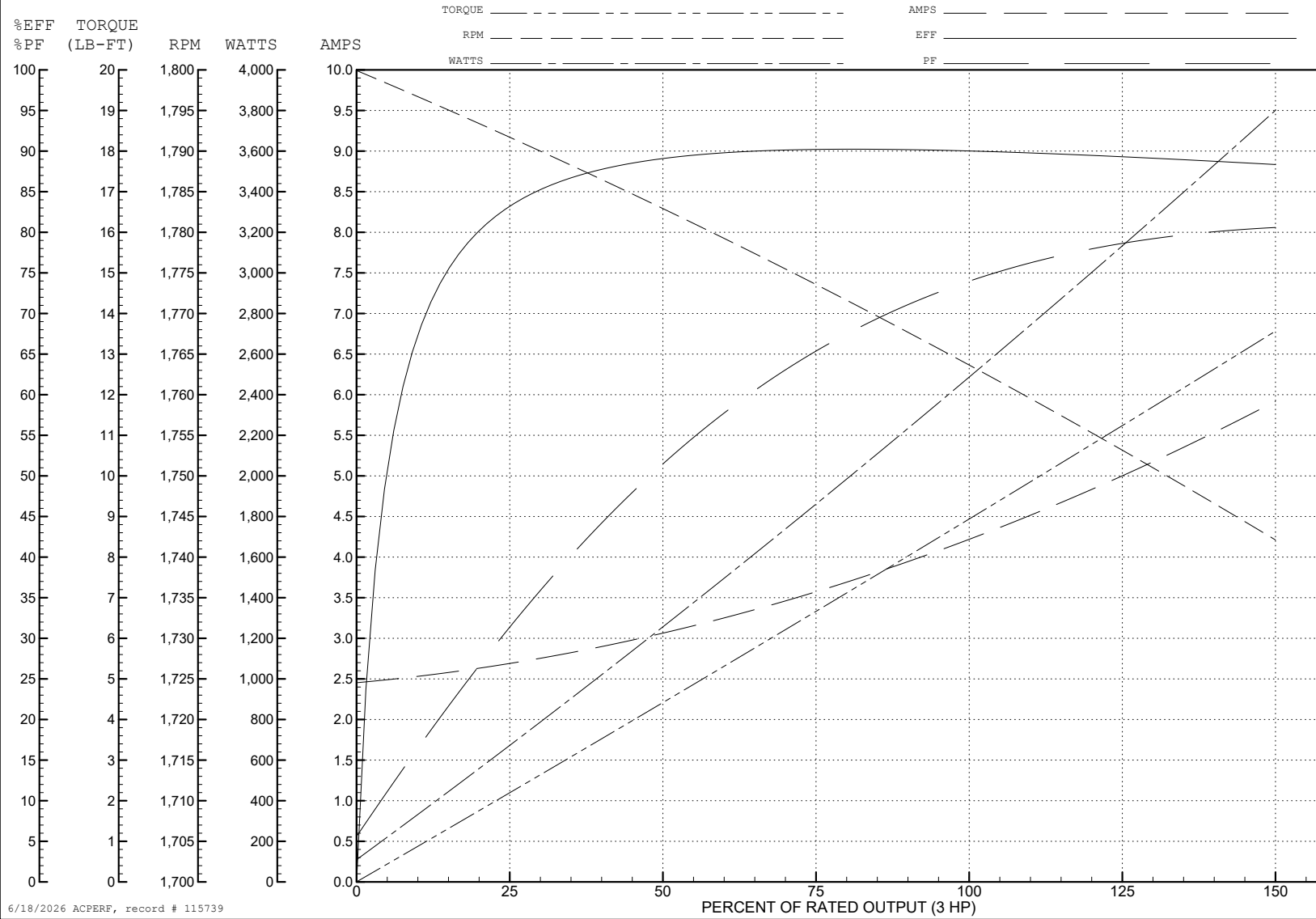
ABB Motors and Mechanical Inc.

WINDING # 36WGZ649

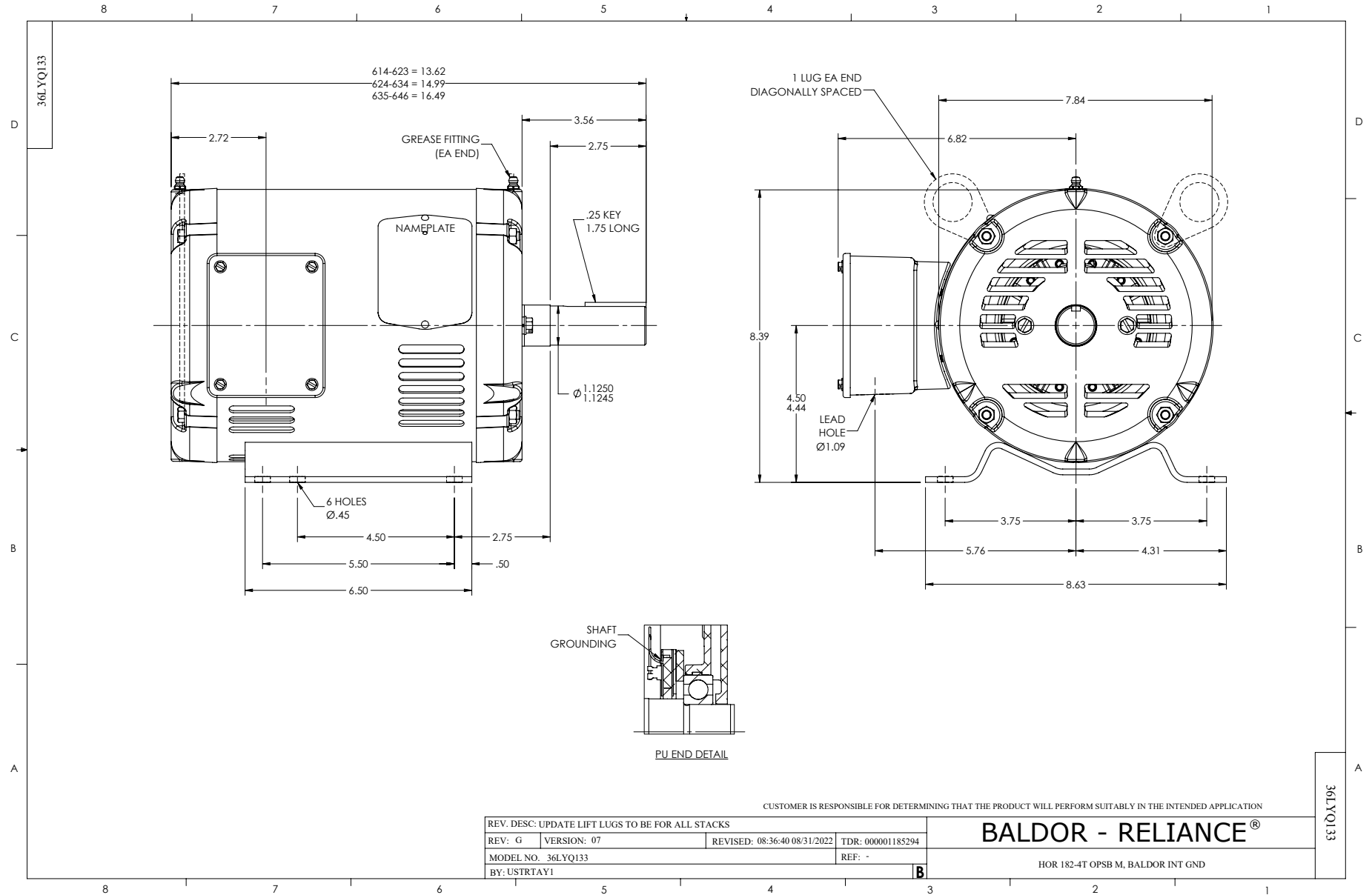
3 HP 3 PH 60 HZ 1760 RPM 460 V 3628M

Typical performance - not guaranteed values.

TORQUES (LB-FT): PO=35.1 PU=19.1 LR=21.2 LRA=30.9



6/18/2026 ACPERF, record # 115739



CD0005



LOW VOLTAGE
(2Y)



LINE

HIGH VOLTAGE
(1Y)



LINE

NOTES:

1. INTERCHANGE ANY TWO LINE LEADS TO REVERSE ROTATION.
2. OPTIONAL THERMOSTATS ARE PROVIDED WHEN SPECIFIED.
3. ACTUAL NUMBER OF INTERNAL PARALLEL CIRCUITS MAY BE A MULTIPLE OF THOSE SHOWN ABOVE.
4. LEAD COLORS ARE OPTIONAL. LEADS MUST ALWAYS BE NUMBERED AS SHOWN.

CD0005

| | | | |
|---|---------|-------------------------|--------------|
| REV. DESC: REVISE TO SHOW OPTIONAL COLORS | | | |
| REV. LTR: E | BY: JLP | REVISED: 01/19/99 10:15 | TDR: 0171435 |
| S00000 | | FILE: AAA00005140 | MDL: - |
| | | MTL: - | |

BALDOR ELECTRIC Co.

3PH, DV, 9 LEADS