

# ABB BALDOR RELIANCE III

---

## Customer information packet

### EM3158T

3HP, 3450RPM, 3PH, 60HZ, 3530M, N

Class - None

Division - Not Applicable

**Specifications**

|                                       |   |
|---------------------------------------|---|
| <b>Enclosure</b>                      | OPSB  |
| <b>Frame</b>                          | 145T  |
| <b>Frame Material</b>                 | Steel   |
| <b>Frequency</b>                      | 60.00 Hz  |
| <b>Haz Area Class and Group</b>       | None  |
| <b>Haz Area Division</b>              | Not Applicable  |
| <b>Motor Letter Type</b>              | Three Phase   |
| <b>Output @ Frequency</b>             | 3.000 HP @ 60 HZ  |
| <b>Phase</b>                          | 3   |
| <b>Synchronous Speed @ Frequency</b>  | 3600 RPM @ 60 HZ  |
| <b>Voltage @ Frequency</b>            | 230.0 V @ 60 HZ<br>460.0 V @ 60 HZ                          |
| <b>Agency Approvals</b>               | NEMA PREMIUM<br>CURUSEEV                                    |
| <b>Ambient Temperature</b>            | 40 °C   |
| <b>Auxiliary Box</b>                  | NO AUXILLARY BOX  |
| <b>Auxiliary Box Lead Termination</b> | None  |
| <b>Base Indicator</b>                 | Rigid   |
| <b>Bearing Grease Type</b>            | Polyrex EM (-20F +300F)                                     |
| <b>Blower</b>                         | None  |
| <b>Current @ Voltage</b>              | 3.800 A @ 460.0 V<br>7.600 A @ 230.0 V<br>8.000 A @ 208.0 V |
| <b>Design Code</b>                    | B   |
| <b>Drip Cover</b>                     | No Drip Cover   |
| <b>Duty Rating</b>                    | CONT  |
| <b>Efficiency @ 100% Load</b>         | 85.5 %  |
| <b>Electrically Isolated Bearing</b>  | Not Electrically Isolated                                   |
| <b>Feedback Device</b>                | NO FEEDBACK   |
| <b>Front Face Code</b>                | Standard  |
| <b>Front Shaft Indicator</b>          | None  |
| <b>Heater Indicator</b>               | No Heater   |

**Part Detail**

|                     |            |
|---------------------|------------|
| <b>Revision</b>     | T          |
| <b>Type</b>         | AC         |
| <b>Mech. spec.</b>  | 35T680     |
| <b>Base</b>         |            |
| <b>Status</b>       | PRD/A      |
| <b>Elec. spec.</b>  | 35WGP988   |
| <b>Layout</b>       | 35LYT680   |
| <b>Eff. date</b>    | 01-05-2026 |
| <b>CD Diagram</b>   | CD0005     |
| <b>Poles</b>        | 02         |
| <b>Leads</b>        | 9#18       |
| <b>Proprietary</b>  | False      |
| <b>Created date</b> | 05-10-2010 |

|                               |                     |
|-------------------------------|---------------------|
| High Voltage Full Load Amps   | 3.8 a               |
| Insulation Class              | F                   |
| Inverter Code                 | Inverter Ready      |
| KVA Code                      | K                   |
| Lifting Lugs                  | No Lifting Lugs     |
| Locked Bearing Indicator      | No Locked Bearing   |
| Motor Lead Exit               | Ko Box              |
| Motor Lead Quantity/Wire Size | 9 @ 18 AWG          |
| Motor Lead Termination        | Flying Leads        |
| Motor Standards               | NEMA                |
| Motor Type                    | 3530M               |
| Mounting Arrangement          | F1                  |
| Number of Poles               | 2                   |
| Overall Length                | 13.00 IN            |
| Power Factor                  | 87                  |
| Product Family                | General Purpose     |
| Pulley End Bearing Type       | Ball                |
| Pulley Face Code              | Standard            |
| Pulley Shaft Indicator        | Standard            |
| Rodent Screen                 | None                |
| RoHS Status                   | ROHS COMPLIANT      |
| Service Factor                | 1.15                |
| Shaft Diameter                | 0.875 IN            |
| Shaft Extension Location      | Pulley End          |
| Shaft Ground Indicator        | No Shaft Grounding  |
| Shaft Rotation                | Reversible          |
| Shaft Slinger Indicator       | No Slinger          |
| Speed                         | 3450 rpm            |
| Speed Code                    | Single Speed        |
| Starting Method               | Direct on line      |
| Thermal Device - Bearing      | None                |
| Thermal Device - Winding      | None                |
| Vibration Sensor Indicator    | No Vibration Sensor |
| Winding Thermal 1             | None                |

**Winding Thermal 2**

**None**

---

**Nameplate**

| <b>NP3553LUA</b>                 |                          |             |           |            |   |              |   |              |  |  |
|----------------------------------|--------------------------|-------------|-----------|------------|---|--------------|---|--------------|--|--|
| <b>CAT.NO.</b>                   | EM3158T                  |             |           |            |   |              |   |              |  |  |
| <b>SPEC.</b>                     | 35T680P988G2             |             |           |            |   |              |   |              |  |  |
| <b>HP</b>                        | 3                        |             |           |            |   |              |   |              |  |  |
| <b>VOLTS</b>                     | 230/460                  |             |           |            |   |              |   |              |  |  |
| <b>AMPS</b>                      | 7.6/3.8                  |             |           |            |   |              |   |              |  |  |
| <b>RPM</b>                       | 3450                     |             |           |            |   |              |   |              |  |  |
| <b>FRAME</b>                     | 145T                     |             | <b>HZ</b> | 60         |   | <b>PH</b>    | 3 |              |  |  |
| <b>SF</b>                        | 1.15                     | <b>CODE</b> | K         | <b>DES</b> | B | <b>CLASS</b> | F |              |  |  |
| <b>NEMA NOM. EFF</b>             | 85.5                     | <b>PF</b>   | 87        |            |   |              |   |              |  |  |
| <b>RATING</b>                    | 40C AMB-CONT             |             |           |            |   |              |   |              |  |  |
| <b>CC</b>                        | 010A                     |             |           |            |   |              |   |              |  |  |
| <b>ENCL</b>                      | OPSB                     | <b>SN</b>   |           |            |   |              |   |              |  |  |
| <b>DE</b>                        | 6205                     | <b>ODE</b>  | 6203      |            |   |              |   |              |  |  |
| <b>VPWM INVERTER READY</b>       |                          |             |           |            |   |              |   |              |  |  |
| <b>CT30-60(2:1) VT3-60(20:1)</b> |                          |             |           |            |   |              |   |              |  |  |
| <b>USABLE AT</b>                 | 50HZ 3HP 190/380V 9/4.5A |             |           |            |   |              |   | <b>SF1.0</b> |  |  |

**Accessories**

| <b>Part number</b> | <b>Description</b> | <b>Multiplier</b> |
|--------------------|--------------------|-------------------|
| 35-8764            | C FACE KIT         | A8                |
| 35EP1604A01SP      | D-FLANGE KIT       |                   |

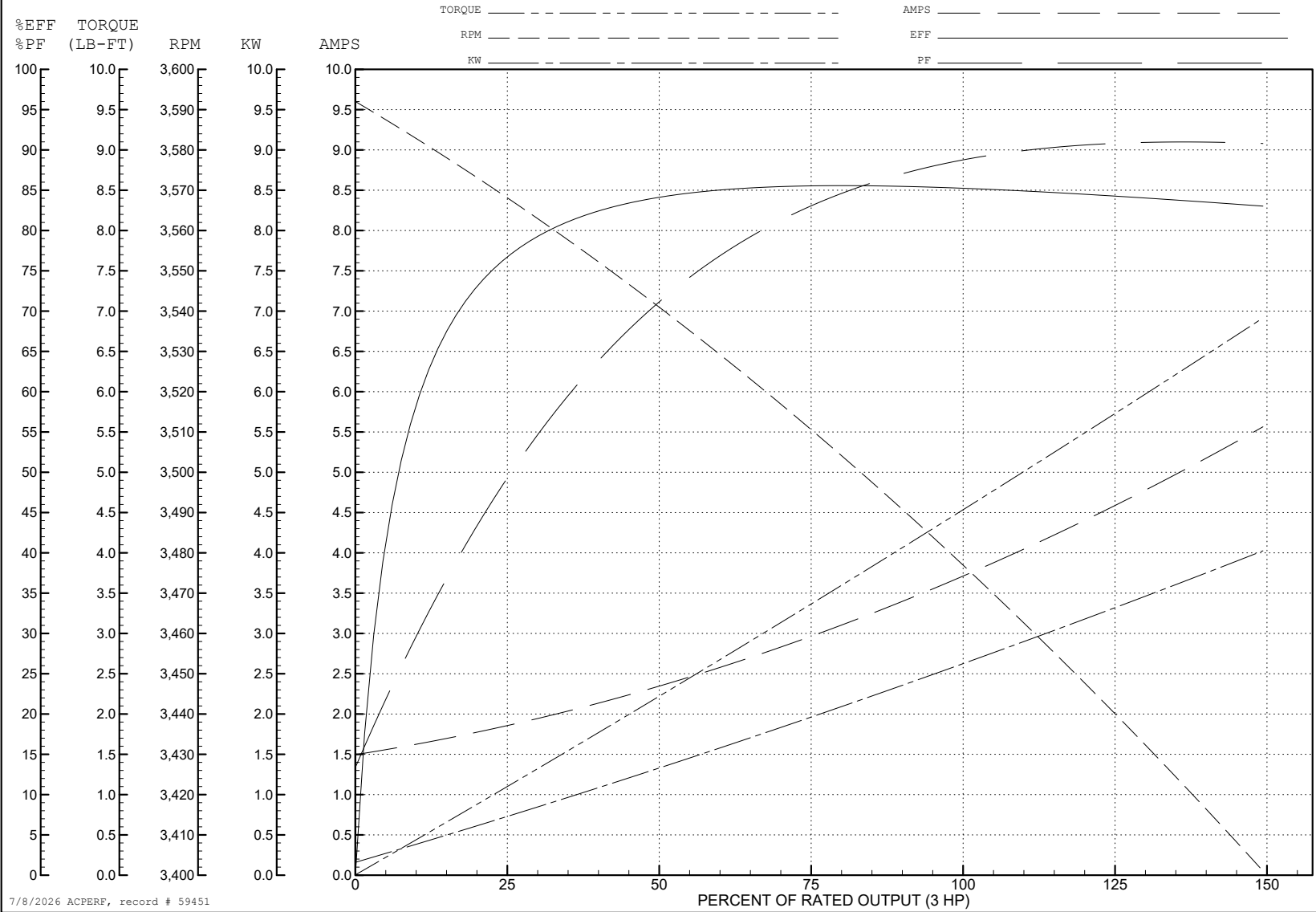
ABB Motors and Mechanical Inc.

WINDING # 35WGP988

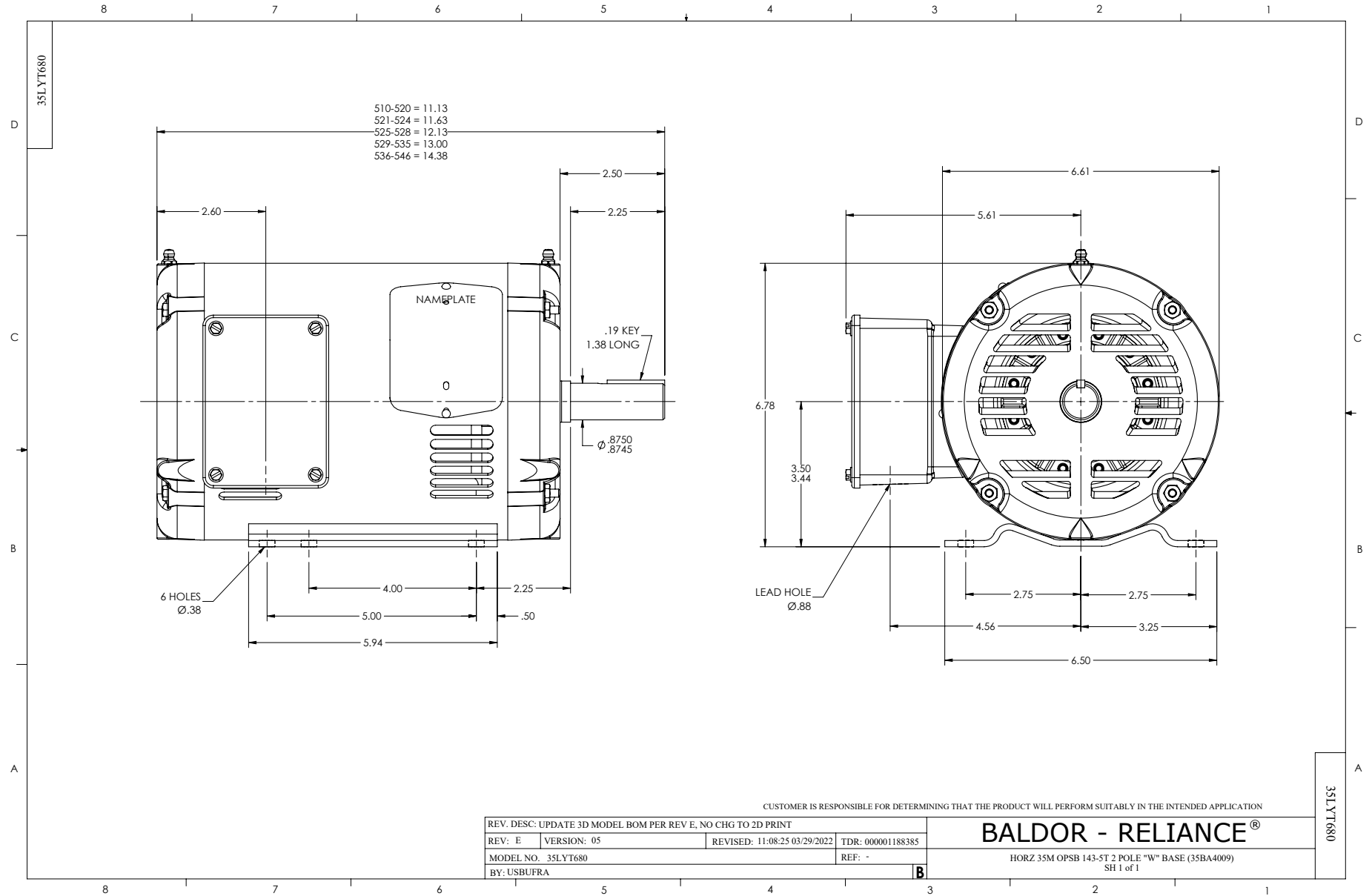
3 HP 3 PH 60 HZ 3450 RPM 460 V 3530M

Typical performance - not guaranteed values.

TORQUES (LB-FT): PO=18.1 PU=11.3 LR=15.1 LRA=32.5



7/8/2026 ACPERF, record # 59451



CD0005



LOW VOLTAGE  
(2Y)



LINE

HIGH VOLTAGE  
(1Y)



LINE

**NOTES:**

1. INTERCHANGE ANY TWO LINE LEADS TO REVERSE ROTATION.
2. OPTIONAL THERMOSTATS ARE PROVIDED WHEN SPECIFIED.
3. ACTUAL NUMBER OF INTERNAL PARALLEL CIRCUITS MAY BE A MULTIPLE OF THOSE SHOWN ABOVE.
4. LEAD COLORS ARE OPTIONAL. LEADS MUST ALWAYS BE NUMBERED AS SHOWN.

CD0005

REV. DESC: REVISE TO SHOW OPTIONAL COLORS

REV. LTR: E BY: JLP REVISED: 01/19/99 10:15 TDR: 0171435

500000

FILE: AAA00005140

MDL: -

MTL: -

**BALDOR ELECTRIC Co.**

3PH, DV, 9 LEADS