



Customer information packet

EM3156T

1HP, 1150RPM, 3PH, 60HZ, 145T, 3524M, OPSB, F1

Class - None

Division - Not Applicable

Specifications

Enclosure	OPSB
Frame	145T
Frame Material	Steel
Frequency	60.00 Hz
Motor Letter Type	Three Phase
Output @ Frequency	1.000 HP @ 60 HZ
Phase	3
Synchronous Speed @ Frequency	1200 RPM @ 60 HZ
Voltage @ Frequency	460.0 V @ 60 HZ 230.0 V @ 60 HZ
XP Class and Group	None
XP Division	Not Applicable
Agency Approvals	CSA EEV NEMA PREMIUM UR CSA
Ambient Temperature	40 °C
Auxillary Box	No Auxillary Box
Auxillary Box Lead Termination	None
Base Indicator	Rigid
Bearing Grease Type	Polyrex EM (-20F +300F)
Blower	None
Current @ Voltage	3.600 A @ 208.0 V 3.600 A @ 230.0 V 1.800 A @ 460.0 V
Design Code	B
Drip Cover	No Drip Cover
Duty Rating	CONT
Efficiency @ 100% Load	82.5 %
Electrically Isolated Bearing	Not Electrically Isolated
Feedback Device	NO FEEDBACK
Front Face Code	Standard

Part detail

Revision	U
Type	AC
Mech. spec.	35L405
Base	
Status	PRD/A
Elec. spec.	35WGM850
Layout	35LYL405
Eff. date	01-30-2018
CD Diagram	CD0005
Poles	06
Leads	9#18
Proprietary	False
Created date	08-02-2010

Front Shaft Indicator	None
Heater Indicator	No Heater
High Voltage Full Load Amps	1.8 a
Insulation Class	F
Inverter Code	Inverter Ready
KVA Code	J
Lifting Lugs	No Lifting Lugs
Locked Bearing Indicator	No Locked Bearing
Motor Lead Exit	Ko Box
Motor Lead Quantity/Wire Size	9 @ 18 AWG
Motor Lead Termination	Flying Leads
Motor Standards	NEMA
Motor Type	3524M
Mounting Arrangement	F1
Number of Poles	6
Overall Length	11.62 IN
Power Factor	64
Product Family	General Purpose
Pulley End Bearing Type	Ball
Pulley Face Code	Standard
Pulley Shaft Indicator	Standard
Rodent Screen	None
Service Factor	1.15
Shaft Diameter	0.875 IN
Shaft Extension Location	Pulley End
Shaft Ground Indicator	No Shaft Grounding
Shaft Rotation	Reversible
Shaft Slinger Indicator	No Slinger
Speed	1155 rpm
Speed Code	Single Speed
Starting Method	Direct on line
Thermal Device - Bearing	None
Thermal Device - Winding	None
Vibration Sensor Indicator	No Vibration Sensor

Winding Thermal 1	None
Winding Thermal 2	None

Nameplate

NP1259LUA									
CAT.NO.	EM3156T								
SPEC.	35L405M850G1								
HP	1								
VOLTS	230/460								
AMPS	3.6/1.8								
R.P.M.	1155								
FRAME	145T	HZ	60	PH	3				
SER.F.	1.15	CODE	J	DES	B	CLASS	F		
NEMA NOM. EFF.	82.5	P.F.	64						
RATING	40C AMB-CONT								
CC	010A	USABLE AT 208V					3.6		
DE	6205	ODE	6203						
ENCL	OPSB	SN							
USABLE AT	50HZ 1HP 190/380V 4/2A								SF1.0

Accessories

Part number	Description	Multiplier
35-8764	C FACE KIT	A8
35EP1604A01SP	D-FLANGE KIT	A8

AC Induction Motor Performance Data

Record # 53336

Typical performance - not guaranteed values

Winding: 35WGM850-R015		Type: 3524M		Enclosure: OPSB	
Nameplate Data			460 V, 60 Hz: High Voltage Connection		
Rated Output (HP)		1	Full Load Torque		4.5 LB-FT
Volts		230/460	Start Configuration		direct on line
Full Load Amps		3.6/1.8	Breakdown Torque		14 LB-FT
R.P.M.		1155	Pull-up Torque		9.71 LB-FT
Hz	60 Phase	3	Locked-rotor Torque		10.2 LB-FT
NEMA Design Code	B KVA Code	J	Starting Current		9.83 A
Service Factor (S.F.)		1.15	No-load Current		1.16 A
NEMA Nom. Eff.	82.5 Power Factor	64	Line-line Res. @ 25°C		16.79 Ω
Rating - Duty		40C AMB-CONT	Temp. Rise @ Rated Load		34°C
S.F. Amps			Temp. Rise @ S.F. Load		42°C
			Locked-rotor Power Factor		42
			Rotor inertia		0.143 LB-FT ²

Load Characteristics 460 V, 60 Hz, 1 HP

% of Rated Load	25	50	75	100	125	150	S.F.
Power Factor	27	44	56	64	70	73	68
Efficiency	71.1	80.6	83	83	81.9	80.1	82.3
Speed	1189.4	1178.8	1169	1156.4	1141.6	1126.3	1148
Line amperes	1.21	1.33	1.51	1.76	2.04	2.38	1.93

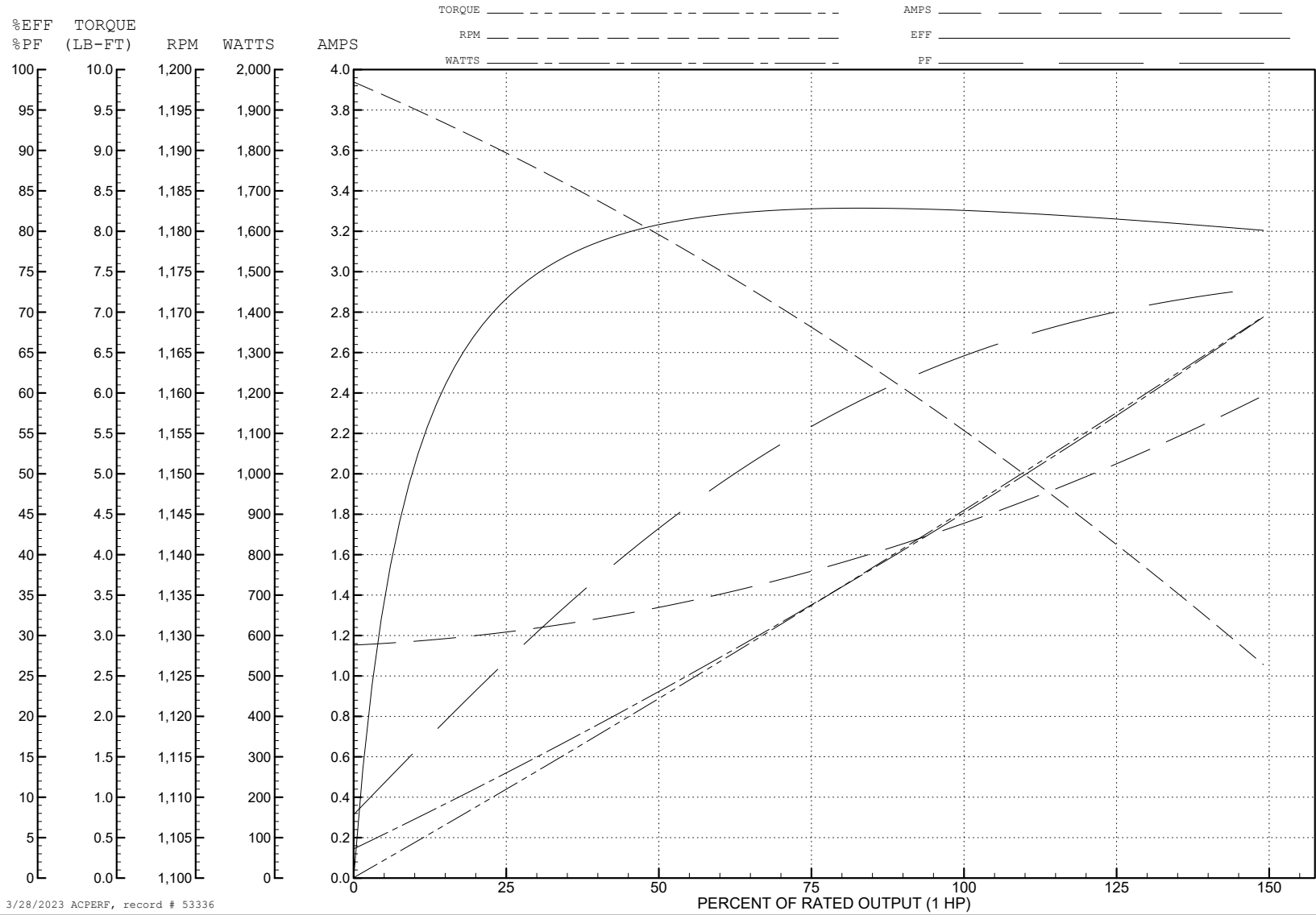
ABB Motors and Mechanical Inc.

WINDING # 35WGM850

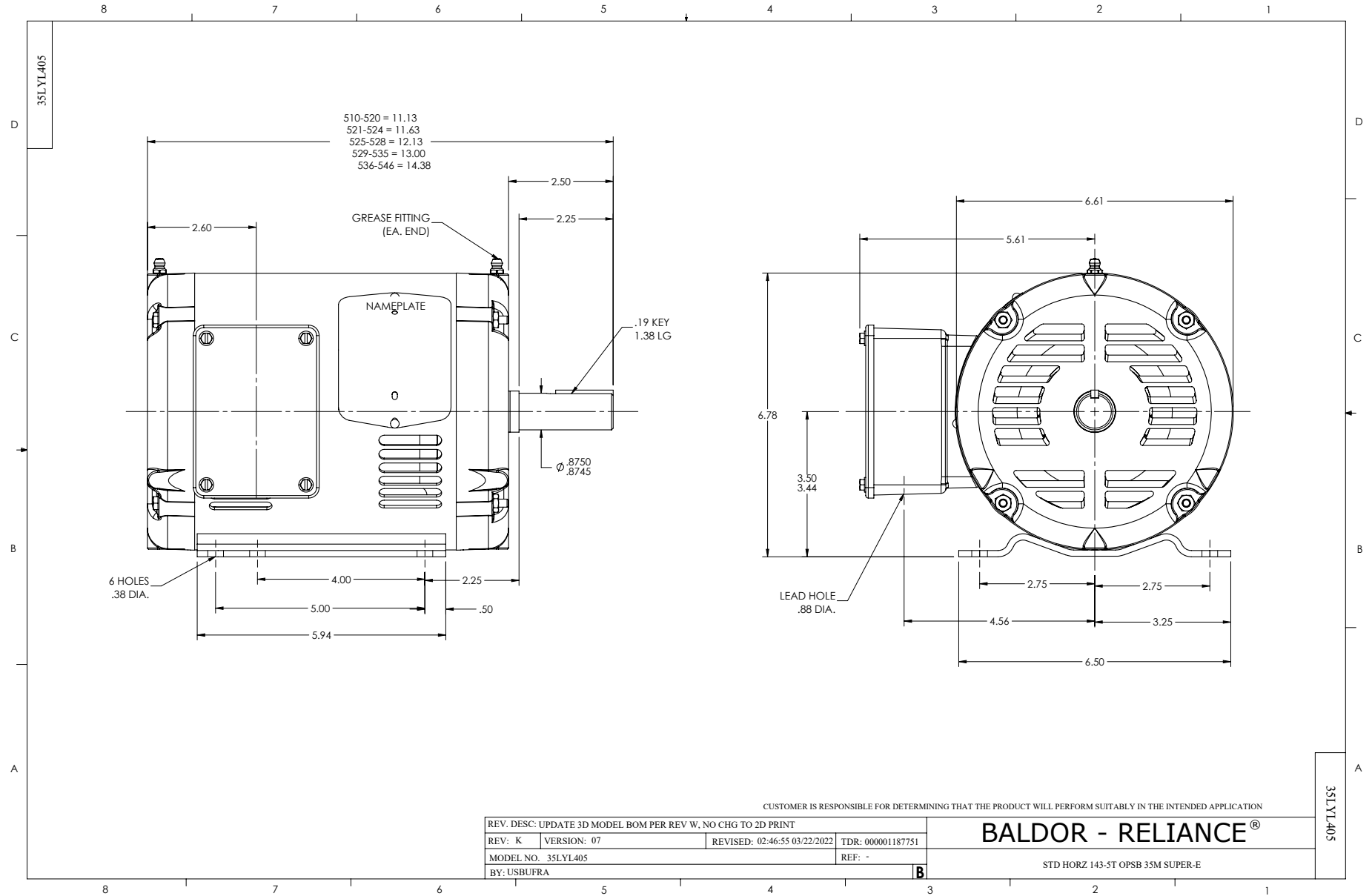
Typical performance - not guaranteed values.

1 HP 3 PH 60 HZ 1155 RPM 460 V 3524M

TORQUES (LB-FT): PO=14 PU=9.71 LR=10.2 LRA=9.83



3/28/2023 ACPERF, record # 53336



CD0005



LOW VOLTAGE
(2Y)



LINE

HIGH VOLTAGE
(1Y)



LINE

NOTES:

1. INTERCHANGE ANY TWO LINE LEADS TO REVERSE ROTATION.
2. OPTIONAL THERMOSTATS ARE PROVIDED WHEN SPECIFIED.
3. ACTUAL NUMBER OF INTERNAL PARALLEL CIRCUITS MAY BE A MULTIPLE OF THOSE SHOWN ABOVE.
4. LEAD COLORS ARE OPTIONAL. LEADS MUST ALWAYS BE NUMBERED AS SHOWN.

CD0005

REV. DESC: REVISE TO SHOW OPTIONAL COLORS			
REV. LTR: E	BY: JLP	REVISED: 01/19/99 10:15	TDR: 0171435
S00000		FILE: AAA00005140	MDL: -
		MTL: -	

BALDOR ELECTRIC Co.

3PH, DV, 9 LEADS