

ABB BALDOR RELIANCE III

Customer information packet

EM3154T

1.5HP, 1770RPM, 3PH, 60HZ, 145T, 3524M, OPSB, F

Class - None

Division - Not Applicable

Specifications

| | |
|---------------------------------------|---|
| Enclosure | OPSB |
| Frame | 145T |
| Frame Material | Steel |
| Frequency | 60.00 Hz |
| Haz Area Class and Group | None |
| Haz Area Division | Not Applicable |
| Motor Letter Type | Three Phase |
| Output @ Frequency | 1.500 HP @ 60 HZ |
| Phase | 3 |
| Synchronous Speed @ Frequency | 1800 RPM @ 60 HZ |
| Voltage @ Frequency | 230.0 V @ 60 HZ 460.0 V @ 60 HZ |
| Agency Approvals | CURUSEEV NEMA PREMIUM |
| Ambient Temperature | 40 °C |
| Auxiliary Box | NO AUXILLARY BOX |
| Auxiliary Box Lead Termination | None |
| Base Indicator | Rigid |
| Bearing Grease Type | Polyrex EM (-20F +300F) |
| Blower | None |
| Current @ Voltage | 2.300 A @ 460.0 V 4.600 A @ 230.0 V 4.640 A @ 208.0 V |
| Design Code | B |
| Drip Cover | No Drip Cover |
| Duty Rating | CONT |
| Efficiency @ 100% Load | 86.5 % |
| Electrically Isolated Bearing | Not Electrically Isolated |
| Feedback Device | NO FEEDBACK |
| Front Shaft Indicator | None |
| Heater Indicator | No Heater |
| High Voltage Full Load Amps | 2.3 a |

Part Detail

| | |
|---------------------|------------|
| Revision | F |
| Type | AC |
| Mech. spec. | 35BB101 |
| Base | |
| Status | PRD/A |
| Elec. spec. | 35WGL955 |
| Layout | 35LYBB101 |
| Eff. date | 02-23-2026 |
| CD Diagram | CD0005 |
| Poles | 04 |
| Leads | 9#18 |
| Proprietary | False |
| Created date | 07-16-2021 |

| | |
|--------------------------------------|---------------------|
| Insulation Class | F |
| Inverter Code | Inverter Ready |
| KVA Code | M |
| Lifting Lugs | No Lifting Lugs |
| Locked Bearing Indicator | No Locked Bearing |
| Motor Lead Quantity/Wire Size | 9 @ 18 AWG |
| Motor Lead Termination | Flying Leads |
| Motor Standards | NEMA |
| Motor Type | 3524M |
| Mounting Arrangement | F1 |
| Number of Poles | 4 |
| Overall Length | 11.62 IN |
| Power Factor | 72 |
| Product Family | General Purpose |
| Pulley End Bearing Type | Ball |
| Pulley Face Code | Standard |
| Pulley Shaft Indicator | Standard |
| Rodent Screen | None |
| RoHS Status | ROHS COMPLIANT |
| Service Factor | 1.15 |
| Shaft Diameter | 0.875 IN |
| Shaft Ground Indicator | No Shaft Grounding |
| Shaft Rotation | Reversible |
| Shaft Slinger Indicator | No Slinger |
| Speed | 1770 rpm |
| Speed Code | Single Speed |
| Starting Method | Direct on line |
| Thermal Device - Bearing | None |
| Thermal Device - Winding | None |
| Vibration Sensor Indicator | No Vibration Sensor |
| Winding Thermal 1 | None |
| Winding Thermal 2 | None |

Nameplate

NP3553LUA

| | | | | | | | |
|----------------------------------|------------------------------|-------------|------|------------|---|--------------|-------|
| CAT.NO. | EM3154T | | | | | | |
| SPEC. | 35BB101L955G1 | | | | | | |
| HP | 1.5 | | | | | | |
| VOLTS | 230/460 | | | | | | |
| AMPS | 4.6/2.3 | | | | | | |
| RPM | 1770 | | | | | | |
| FRAME | 145T | HZ | 60 | PH | 3 | | |
| SF | 1.15 | CODE | M | DES | B | CLASS | F |
| NEMA NOM. EFF | 86.5 | PF | 72 | | | | |
| RATING | 40C AMB-CONT | | | | | | |
| CC | 010A | | | | | | |
| ENCL | OPSB | SN | | | | | |
| DE | 6205 | ODE | 6203 | | | | |
| VPWM INVERTER READY | SFA 5/2.5 | | | | | | |
| CT30-60(2:1) VT3-60(20:1) | | | | | | | |
| USABLE AT | 1.5HP 190/380V 50HZ 5.2/2.6A | | | | | | SF1.0 |

Accessories

| Part number | Description | Multiplier |
|--------------------|--------------------|-------------------|
| 35-8764 | C FACE KIT | A8 |
| 35EP1604A01SP | D-FLANGE KIT | |

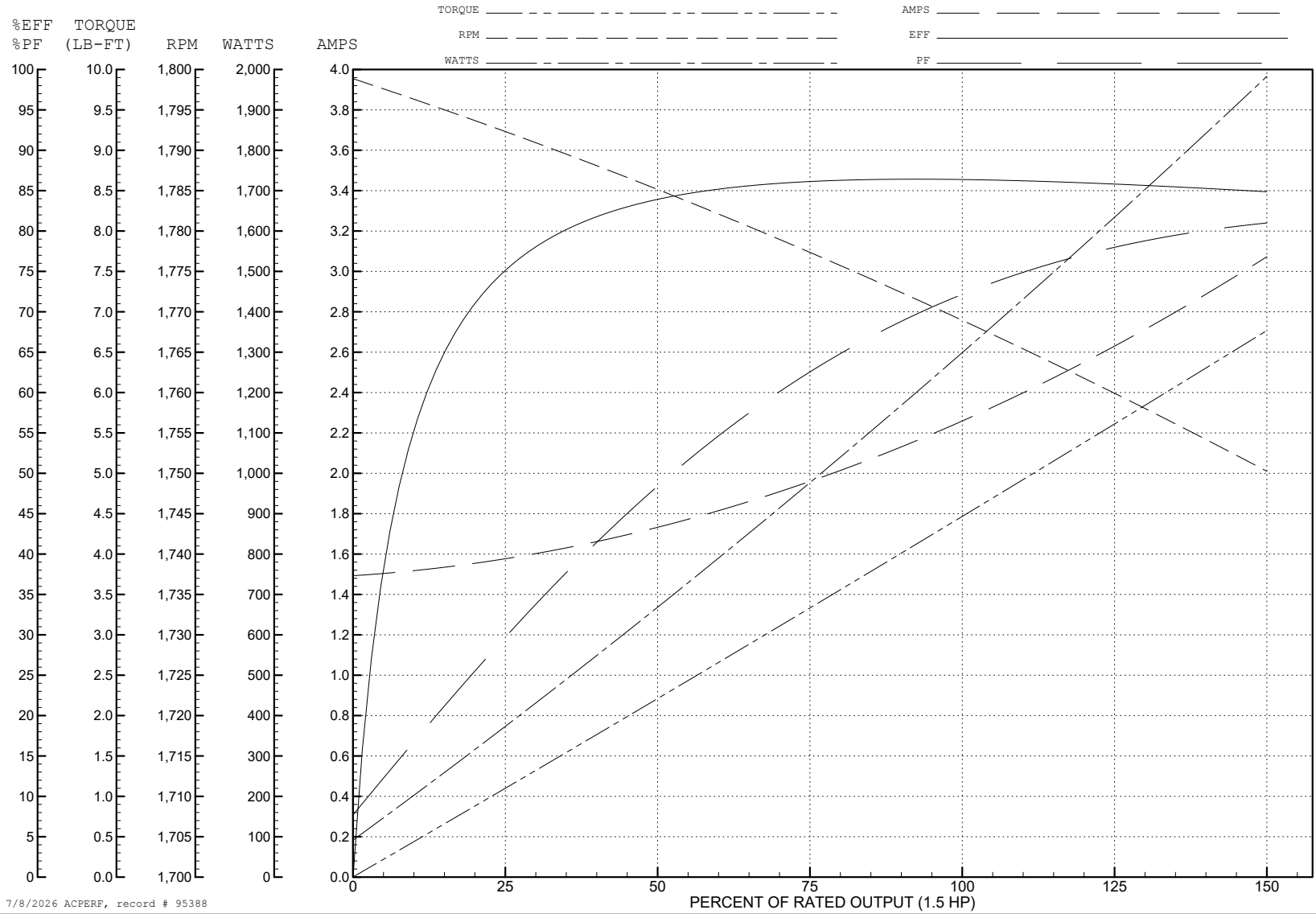
ABB Motors and Mechanical Inc.

WINDING # 35WGL955

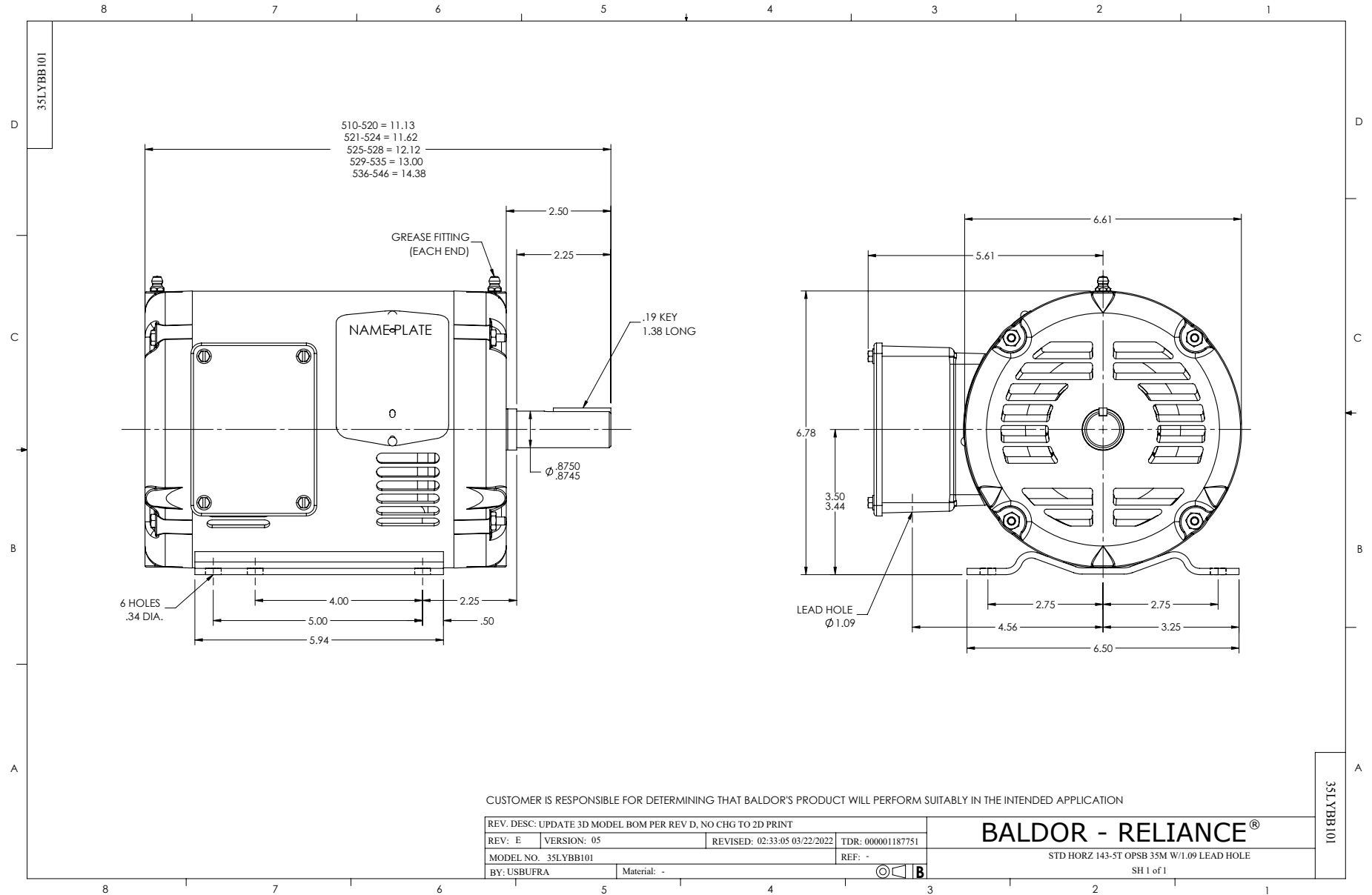
Typical performance - not guaranteed values.

1.5 HP 3 PH 60 HZ 1770 RPM 460 V 3524M

TORQUES (LB-FT): PO=18.8 PU=9.6 LR=12.6 LRA=19.7



7/8/2026 ACPERF, record # 95388



CD0005

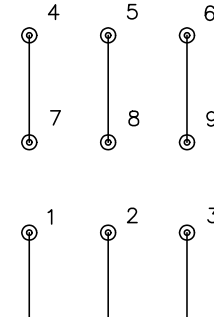


LOW VOLTAGE
(2Y)



LINE

HIGH VOLTAGE
(1Y)



LINE

NOTES:

1. INTERCHANGE ANY TWO LINE LEADS TO REVERSE ROTATION.
2. OPTIONAL THERMOSTATS ARE PROVIDED WHEN SPECIFIED.
3. ACTUAL NUMBER OF INTERNAL PARALLEL CIRCUITS MAY BE A MULTIPLE OF THOSE SHOWN ABOVE.
4. LEAD COLORS ARE OPTIONAL. LEADS MUST ALWAYS BE NUMBERED AS SHOWN.

CD0005

REV. DESC: REVISE TO SHOW OPTIONAL COLORS

REV. LTR: E BY: JLP REVISED: 01/19/99 10:15 TDR: 0171435

500000

FILE: AAA00005140

MDL: -

MTL: -

BALDOR ELECTRIC Co.

3PH, DV, 9 LEADS