

BALDOR • RELIANCE

Customer information packet

EM3154T-57

1.5/1.1KWHP, 1470RPM, 3PH, 50HZ, 145T, 3524M

Class - None

Division - Not Applicable

Copyright © All product information within this document is subject to ABB Motors and Mechanical Inc. copyright © protection, unless otherwise noted.

10/5/2024 2:24:29 AM

Specifications

Enclosure	OPEN
Frame	145T
Frame Material	Steel
Frequency	50.00 Hz
Haz Area Class and Group	None
Haz Area Division	Not Applicable
Motor Letter Type	Three Phase
Output @ Frequency	1.500 HP @ 50 HZ
Phase	3
Synchronous Speed @ Frequency	1500 RPM @ 50 HZ
Voltage @ Frequency	230.0 V @ 50 HZ 400.0 V @ 50 HZ
Agency Approvals	CE CSA IE3 UR WEEE
Ambient Temperature	40 °C
Auxillary Box	No Auxillary Box
Auxillary Box Lead Termination	None
Base Indicator	Rigid
Bearing Grease Type	Polyrex EM (-20F +300F)
Blower	None
Current @ Voltage	4.500 A @ 230.0 V 2.600 A @ 400.0 V
Design Code	B
Drip Cover	No Drip Cover
Duty Rating	CONT
Efficiency @ 100% Load	84.2 %
Electrically Isolated Bearing	Not Electrically Isolated
Feedback Device	NO FEEDBACK
Front Shaft Indicator	None

Part detail

Revision	B
Type	AC
Mech. spec.	35BB001
Base	
Status	PRD/A
Elec. spec.	35WGG296
Layout	35LYBB001
Eff. date	05-07-2024
CD Diagram	CD0022
Poles	04
Leads	6#18 Y
Proprietary	False
Created date	03-11-2022

Heater Indicator	No Heater
High Voltage Full Load Amps	2.6 a
Insulation Class	F
Inverter Code	Inverter Ready
IP Rating	NONE
KVA Code	L
Lifting Lugs	No Lifting Lugs
Locked Bearing Indicator	No Locked Bearing
Motor Lead Quantity/Wire Size	6 @ 18 AWG
Motor Lead Termination	Flying Leads
Motor Standards	NEMA
Motor Type	3524M
Mounting Arrangement	F1
Number of Poles	4
Overall Length	12.13 IN
Power Factor	73
Product Family	General Purpose
Pulley End Bearing Type	Ball
Pulley Face Code	Standard
Pulley Shaft Indicator	Standard
Rodent Screen	None
Service Factor	1.15
Shaft Diameter	0.875 IN
Shaft Ground Indicator	No Shaft Grounding
Shaft Rotation	Reversible
Shaft Slinger Indicator	No Slinger
Speed	1470 rpm
Speed Code	Single Speed
Starting Method	Direct on line
Thermal Device - Bearing	None
Thermal Device - Winding	None
Vibration Sensor Indicator	No Vibration Sensor
Winding Thermal 1	None
Winding Thermal 2	None

Nameplate

NP2716L										
CAT NO	EM3154T-57									
SPEC.	35BB001G296G1									
HP	1.5/1.1KW						PH	3		
VOLTS	230/400									
AMP	4.5/2.6									
R.P.M. (1/MIN)	1470									
FRAME	145T		HZ	50		I.P.	23			
SER.F.	1.15	CODE	L	DES	B	CL	F			
NOM.EFF.	84.2		% (100%)							
PF	73									
RATING	40C AMB-S1 CONT				CC					
DE BRG	6205		ODE	6203						
ENCL	OPEN	SN								
BLANK	SFA 4.8/2.8									
	IC01 19KG									

AC Induction Motor Performance Data

Record # 86993

Preliminary Data Sheet

Winding: 35WGG296-R002		Type: 3524M		Enclosure: OPEN	
Nameplate Data			400 V, 50 Hz: High Voltage Connection		
Rated Output (HP)	1.5		Full Load Torque	5.39 LB-FT	
Volts	230/400		Start Configuration	direct on line	
Full Load Amps	4.5/2.6		Breakdown Torque	18.9 LB-FT	
R.P.M.	1470		Pull-up Torque	10.8 LB-FT	
Hz	50 Phase	3	Locked-rotor Torque	13.3 LB-FT	
NEMA Design Code	B KVA Code	L	Starting Current	20 A	
Service Factor (S.F.)	1.15		No-load Current	1.69 A	
NEMA Nom. Eff.	84.2 Power Factor	73	Line-line Res. @ 25°C	12.6 Ω	
Rating - Duty	40C AMB-CONT		Temp. Rise @ Rated Load	56°C	
S.F. Amps	5/2.9		Temp. Rise @ S.F. Load	67°C	
			Locked-rotor Power Factor	70	
			Rotor inertia	0.173 lb-ft ²	

Load Characteristics 400 V, 50 Hz, 1.5 HP

% of Rated Load	25	50	75	100	125	150	S.F.
Power Factor	33	51	64	73	79	83	80
Efficiency	72.7	81.7	84	84.3	83.2	81.7	84.2
Speed	1492	1486	1478	1470	1460	1450	1462
Line amperes	1.75	1.94	2.25	2.61	3.07	3.58	2.75

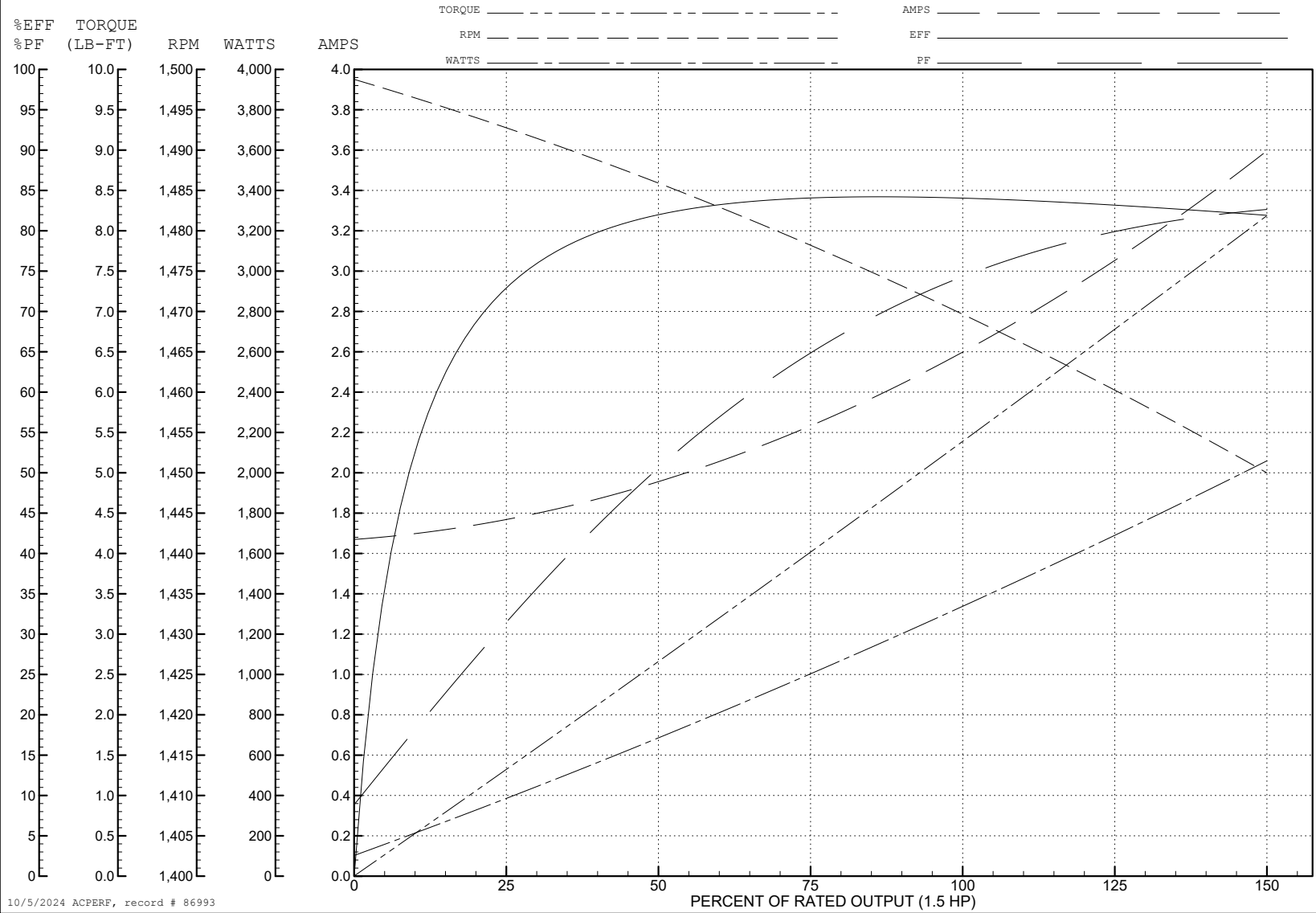
ABB Motors and Mechanical Inc.

WINDING # 35WGG296

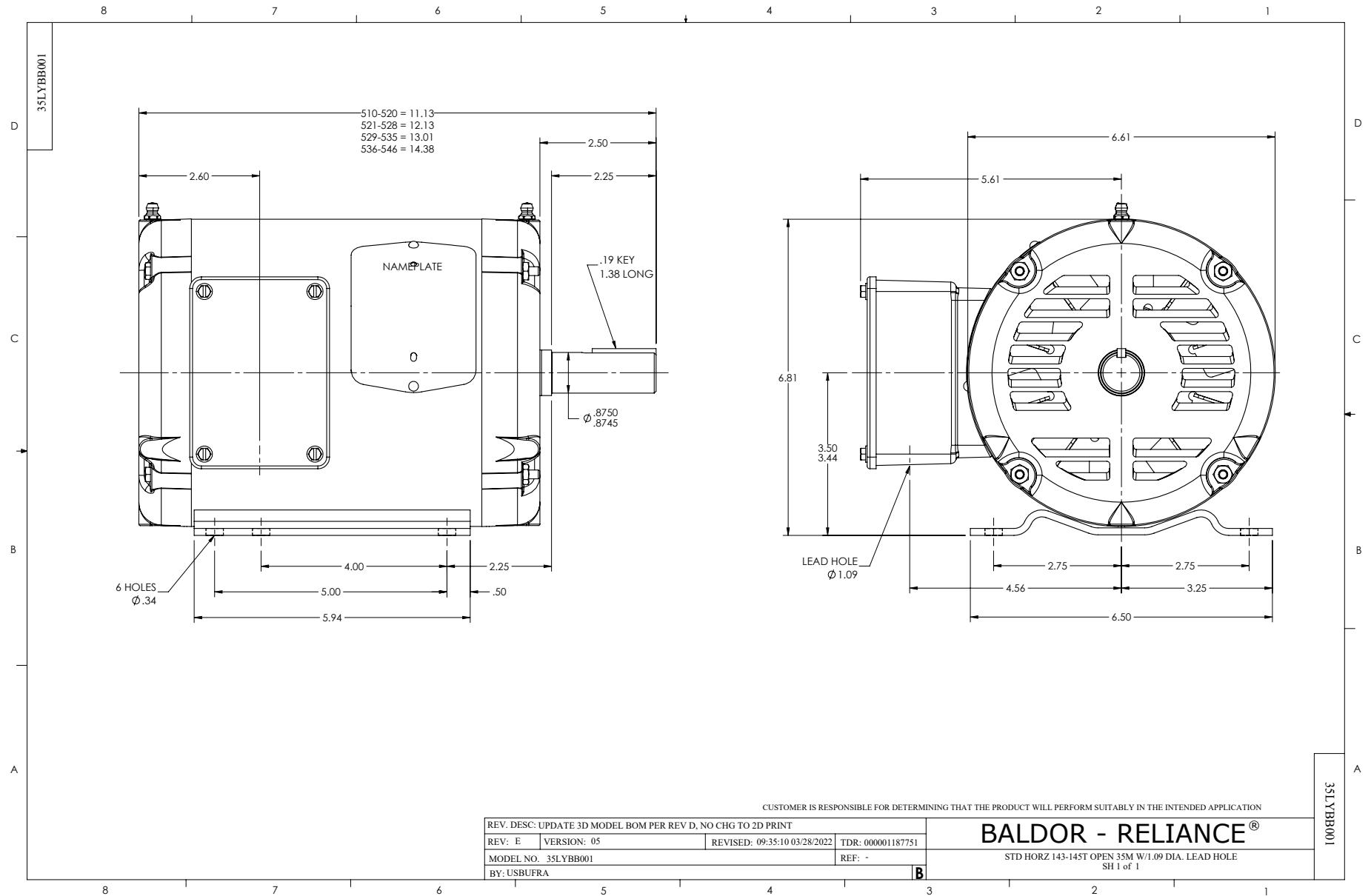
Typical performance - not guaranteed values.

1.5 HP 3 PH 50 HZ 1470 RPM 400 V 3524M

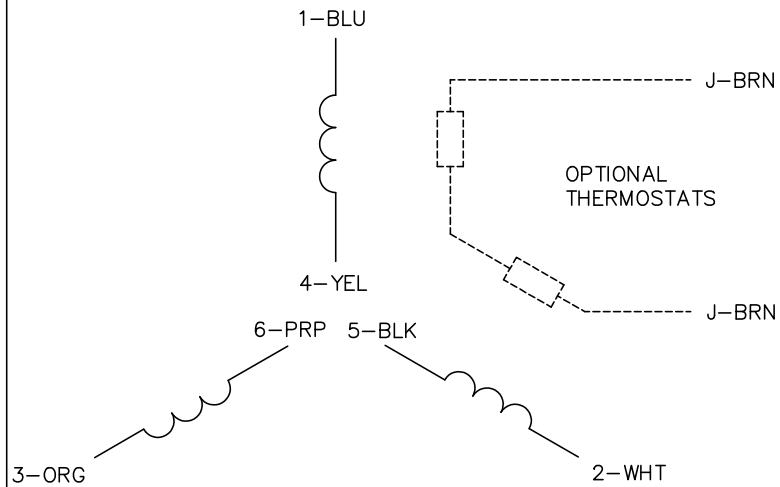
TORQUES (LB-FT): PO=18.9 PU=10.8 LR=13.3 LRA=20



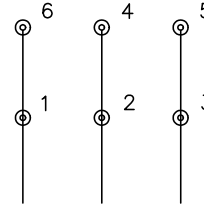
10/5/2024 ACPERF, record # 86993



CD0022

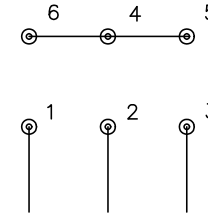


LOW VOLTAGE
(1D)



LINE

HIGH VOLTAGE
(1Y)



LINE

NOTES:

1. INTERCHANGE ANY TWO LINE LEADS TO REVERSE ROTATION.
2. OPTIONAL THERMOSTATS ARE PROVIDED WHEN SPECIFIED.
3. ACTUAL NUMBER OF INTERNAL PARALLEL CIRCUITS MAY BE A MULTIPLE OF THOSE SHOWN ABOVE.
4. LEAD COLORS ARE OPTIONAL. LEADS MUST ALWAYS BE NUMBERED AS SHOWN.

REV. DESC: REVISE TO SHOW OPTIONAL COLORS			
REV. LTR: F	BY: JLP	REVISED: 01/21/99 3:54	TDR: 0171435
CD0022		FILE: AAA00005144	MDL: -
		MTL: -	

BALDOR ELECTRIC Co.

3PH, DV, 6 LEADS, DELTA/WYE CONNECTION

CD0022