

ABB BALDOR RELIANCE III

Customer information packet

EM3120T

1.5HP, 3490RPM, 3PH, 60HZ, 3518M, N

Class - None

Division - Not Applicable

Specifications

Enclosure	OPSB
Frame	143T
Frame Material	Steel
Frequency	60.00 Hz
Haz Area Class and Group	None
Haz Area Division	Not Applicable
Motor Letter Type	Three Phase
Output @ Frequency	1.500 HP @ 60 HZ
Phase	3
Synchronous Speed @ Frequency	3600 RPM @ 60 HZ
Voltage @ Frequency	230.0 V @ 60 HZ 460.0 V @ 60 HZ
Agency Approvals	NEMA PREMIUM CURUSEEV
Ambient Temperature	40 °C
Auxiliary Box	NO AUXILLARY BOX
Auxiliary Box Lead Termination	None
Base Indicator	Rigid
Bearing Grease Type	Polyrex EM (-20F +300F)
Blower	None
Current @ Voltage	2.000 A @ 460.0 V 4.000 A @ 230.0 V 4.200 A @ 208.0 V
Design Code	B
Drip Cover	No Drip Cover
Duty Rating	CONT
Efficiency @ 100% Load	84.0 %
Electrically Isolated Bearing	Not Electrically Isolated
Feedback Device	NO FEEDBACK
Front Face Code	Standard
Front Shaft Indicator	None
Heater Indicator	No Heater

Part Detail

Revision	W
Type	AC
Mech. spec.	35TT680
Base	
Status	PRD/A
Elec. spec.	35WGM761
Layout	35LYTT680
Eff. date	01-08-2026
CD Diagram	CD0005
Poles	02
Leads	9#18
Proprietary	False
Created date	06-03-2010

High Voltage Full Load Amps	2.0 a
Insulation Class	F
Inverter Code	Inverter Ready
KVA Code	L
Lifting Lugs	No Lifting Lugs
Locked Bearing Indicator	No Locked Bearing
Motor Lead Exit	Ko Box
Motor Lead Quantity/Wire Size	9 @ 18 AWG
Motor Lead Termination	Flying Leads
Motor Standards	NEMA
Motor Type	3518M
Mounting Arrangement	F1
Number of Poles	2
Overall Length	11.12 IN
Power Factor	83
Product Family	General Purpose
Pulley End Bearing Type	Ball
Pulley Face Code	Standard
Pulley Shaft Indicator	Standard
Rodent Screen	None
RoHS Status	ROHS COMPLIANT
Service Factor	1.15
Shaft Diameter	0.875 IN
Shaft Extension Location	Pulley End
Shaft Ground Indicator	No Shaft Grounding
Shaft Rotation	Reversible
Shaft Slinger Indicator	No Slinger
Speed	3490 rpm
Speed Code	Single Speed
Starting Method	Direct on line
Thermal Device - Bearing	None
Thermal Device - Winding	None
Vibration Sensor Indicator	No Vibration Sensor
Winding Thermal 1	None

Winding Thermal 2

None

Nameplate

NP3553LUA

CAT.NO.	EM3120T						
SPEC.	35TT680M761G1						
HP	1.5						
VOLTS	230/460						
AMPS	4/2						
RPM	3490						
FRAME	143T	HZ	60	PH	3		
SF	1.15	CODE	L	DES	B	CLASS	F
NEMA NOM. EFF	84	PF	83				
RATING	40C AMB-CONT						
CC	010A						
ENCL	OPSB	SN					
DE	6205	ODE	6203				
VPWM INVERTER READY							
CT30-60(2:1) VT3-60(20:1)							
USABLE AT	50HZ 1.5HP 190/380V 4.6/2.3A						SF1.0

Accessories

Part number	Description	Multiplier
35-8764	C FACE KIT	A8
35EP1604A01SP	D-FLANGE KIT	

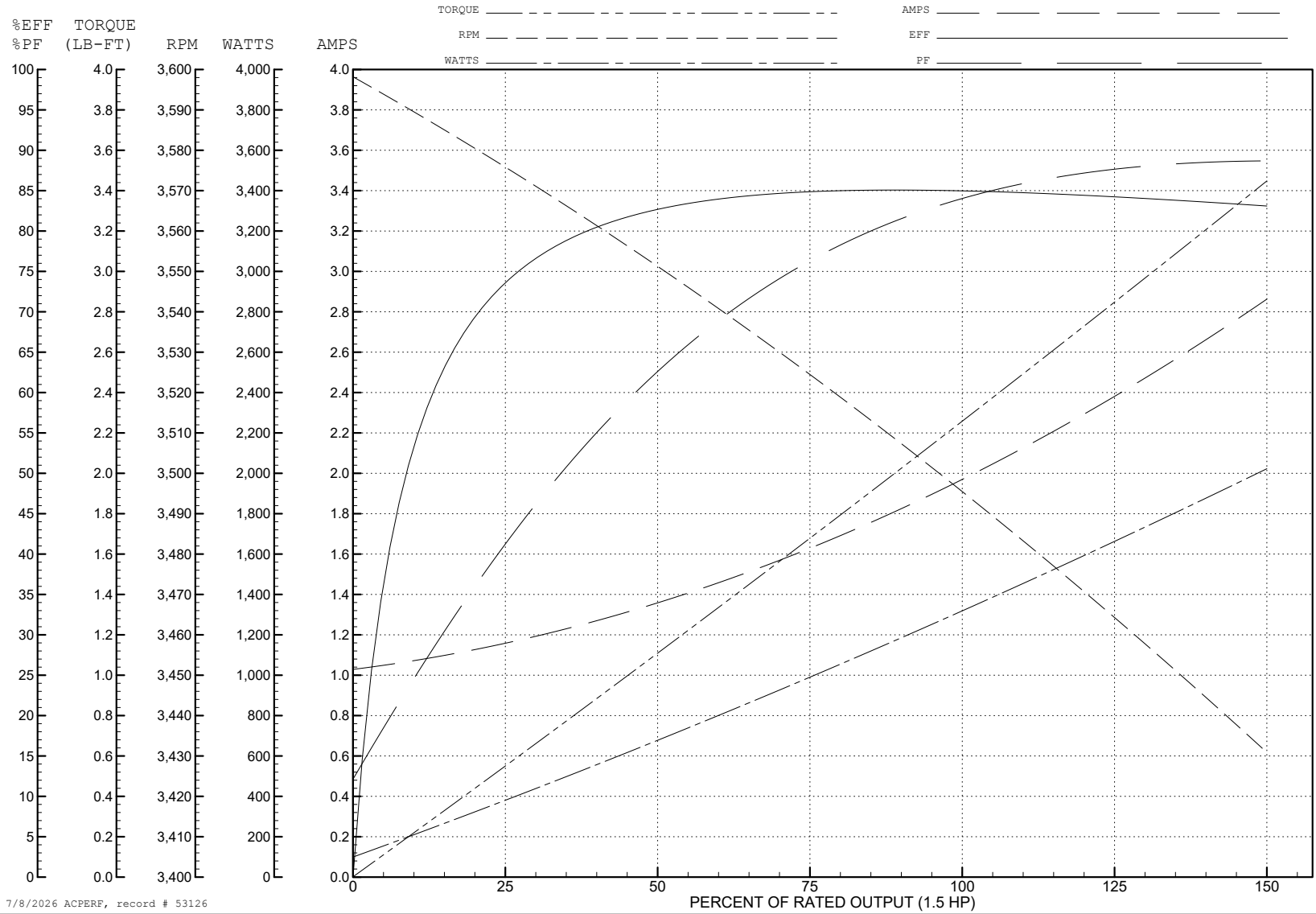
ABB Motors and Mechanical Inc.

WINDING # 35WGM761

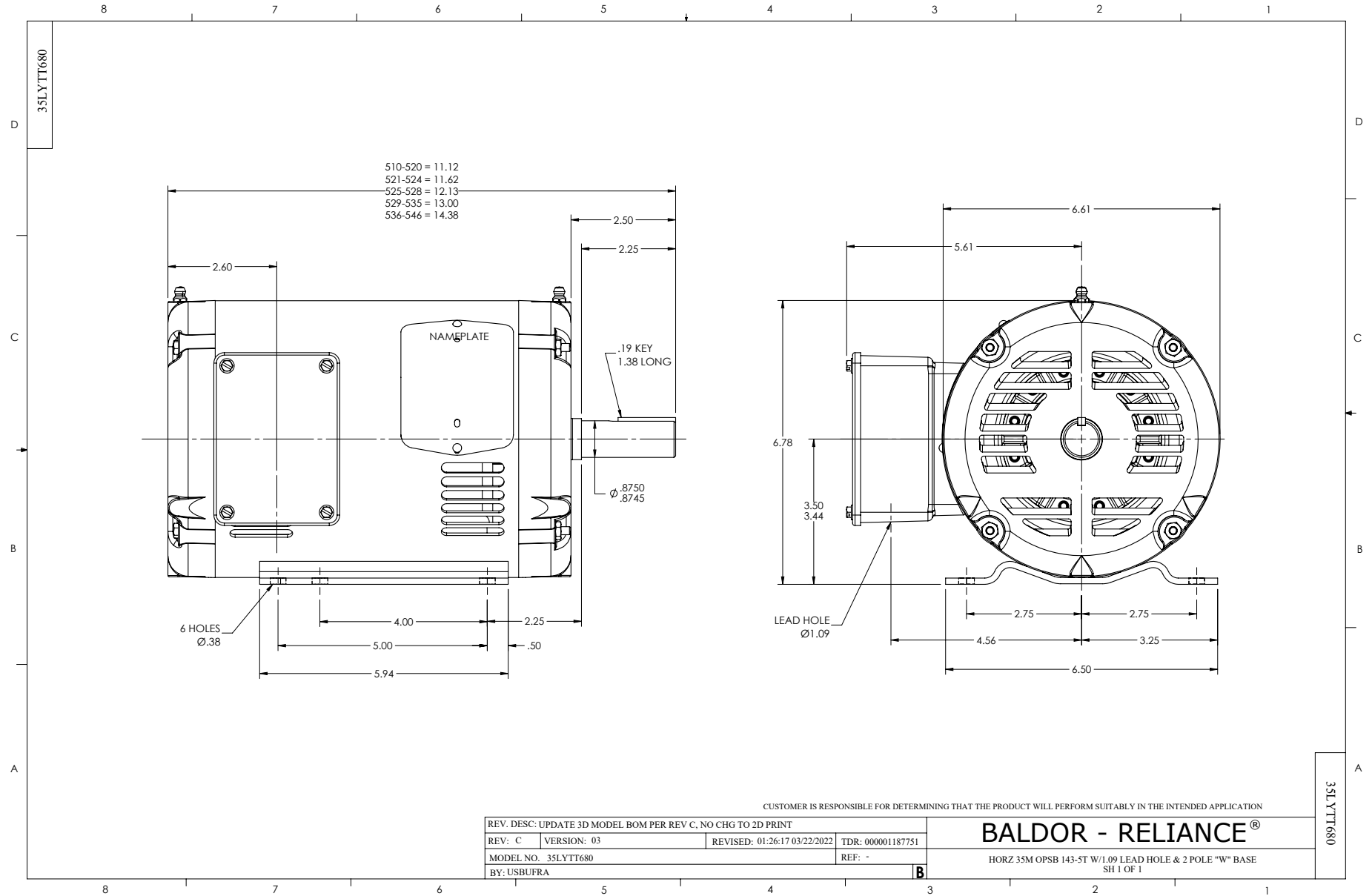
1.5 HP 3 PH 60 HZ 3490 RPM 460 V 3518M

Typical performance - not guaranteed values.

TORQUES (LB-FT): PO=9.32 PU=4.18 LR=6.79 LRA=17.2



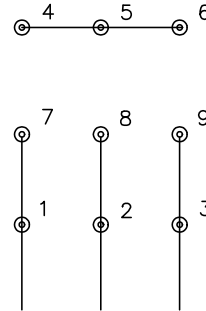
7/8/2026 ACPERF, record # 53126



CD0005

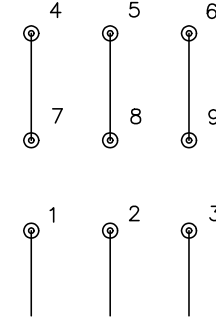


LOW VOLTAGE
(2Y)



LINE

HIGH VOLTAGE
(1Y)



LINE

NOTES:

1. INTERCHANGE ANY TWO LINE LEADS TO REVERSE ROTATION.
2. OPTIONAL THERMOSTATS ARE PROVIDED WHEN SPECIFIED.
3. ACTUAL NUMBER OF INTERNAL PARALLEL CIRCUITS MAY BE A MULTIPLE OF THOSE SHOWN ABOVE.
4. LEAD COLORS ARE OPTIONAL. LEADS MUST ALWAYS BE NUMBERED AS SHOWN.

CD0005

REV. DESC: REVISE TO SHOW OPTIONAL COLORS			
REV. LTR: E	BY: JLP	REVISED: 01/19/99 10:15	TDR: 0171435
S00000		FILE: AAA00005140	MDL: -
		MTL: -	

BALDOR ELECTRIC Co.

3PH, DV, 9 LEADS