

BALDOR • RELIANCE

Customer information packet

EM3116T-BG

1HP, 1760RPM, 3PH, 60HZ, 143T, 3520M, OPSB, F1

Class - None

Division - Not Applicable

Specifications

Enclosure	OPSB
Frame	143T
Frame Material	Steel
Frequency	60.00 Hz
Haz Area Class and Group	None
Haz Area Division	Not Applicable
Motor Letter Type	Three Phase
Output @ Frequency	1.000 HP @ 60 HZ
Phase	3
Synchronous Speed @ Frequency	1800 RPM @ 60 HZ
Voltage @ Frequency	460.0 V @ 60 HZ 230.0 V @ 60 HZ
Agency Approvals	CSA CSA EEV UR
Ambient Temperature	40 °C
Auxillary Box	No Auxillary Box
Auxillary Box Lead Termination	None
Base Indicator	Rigid
Bearing Grease Type	Polyrex EM (-20F +300F)
Blower	None
Current @ Voltage	3.000 A @ 230.0 V 3.100 A @ 208.0 V 1.600 A @ 460.0 V
Design Code	B
Drip Cover	No Drip Cover
Duty Rating	CONT
Efficiency @ 100% Load	85.5 %
Electrically Isolated Bearing	Not Electrically Isolated
Feedback Device	NO FEEDBACK
Front Face Code	Standard
Front Shaft Indicator	None

Part detail

Revision	U
Type	AC
Mech. spec.	35E2261
Base	
Status	PRD/A
Elec. spec.	35WGM492
Layout	35LYE2261
Eff. date	06-11-2024
CD Diagram	CD0005
Poles	04
Leads	9#18
Proprietary	False
Created date	10-27-2013

Heater Indicator	No Heater
High Voltage Full Load Amps	1.6 a
Insulation Class	H
Inverter Code	Inverter Ready
KVA Code	L
Lifting Lugs	No Lifting Lugs
Locked Bearing Indicator	Locked Bearing
Motor Lead Exit	Ko Box
Motor Lead Quantity/Wire Size	9 @ 18 AWG
Motor Lead Termination	Flying Leads
Motor Standards	NEMA
Motor Type	3520M
Mounting Arrangement	F1
Number of Poles	4
Overall Length	11.12 IN
Power Factor	71
Product Family	General Purpose
Pulley End Bearing Type	Ball
Pulley Face Code	Standard
Pulley Shaft Indicator	Standard
Rodent Screen	None
RoHS Status	ROHS COMPLIANT
Service Factor	1.15
Shaft Diameter	0.875 IN
Shaft Extension Location	Pulley End
Shaft Ground Indicator	Shaft Grounding
Shaft Rotation	Reversible
Shaft Slinger Indicator	No Slinger
Speed	1760 rpm
Speed Code	Single Speed
Starting Method	Direct on line
Thermal Device - Bearing	None
Thermal Device - Winding	None
Vibration Sensor Indicator	No Vibration Sensor

Winding Thermal 1	None
Winding Thermal 2	None

Nameplate

NP3553LUA									
CAT.NO.	EM3116T-BG								
SPEC.	35E2261M492G1								
HP	1								
VOLTS	230/460								
AMPS	3/1.5								
RPM	1760								
FRAME	143T		HZ	60		PH	3		
SF	1.15	CODE	L	DES	B	CLASS	H		
NEMA NOM. EFF	85.5	PF	71						
RATING	40C AMB-CONT								
CC	010A								
ENCL	OPSB	SN							
DE	6205	ODE	6203						
VPWM INVERTER READY									
CT30-60(2:1) VT3-60(20:1)									
USABLE AT	50Hz 1HP 190/380V 3.6/1.8A							sf1.0	

AC Induction Motor Performance Data

Record # 92851

Typical performance - not guaranteed values

Winding: 35WGM492-R016		Type: 3520M		Enclosure: OPSB	
Nameplate Data			460 V, 60 Hz: High Voltage Connection		
Rated Output (HP)		1	Full Load Torque		2.994 LB-FT
Volts		230/460	Start Configuration		direct on line
Full Load Amps		3/1.5	Breakdown Torque		12.5 LB-FT
R.P.M.		1760	Pull-up Torque		7.25 LB-FT
Hz	60	Phase	3	Locked-rotor Torque	8.87 LB-FT
NEMA Design Code		B KVA Code	L	Starting Current	12.2 A
Service Factor (S.F.)			1.15	No-load Current	0.995 A
NEMA Nom. Eff.	85.5	Power Factor	71	Line-line Res. @ 25°C	15.753 Ω
Rating - Duty			40C AMB-CONT	Temp. Rise @ Rated Load	20°C
S.F. Amps				Temp. Rise @ S.F. Load	23°C
				Locked-rotor Power Factor	53.8

Load Characteristics 460 V, 60 Hz, 1 HP

% of Rated Load	25	50	75	100	125	150	S.F.
Power Factor	31	49	62	71	76	80	74
Efficiency	73.6	82.9	85.7	86.4	86.1	85.3	86.2
Speed	1790.2	1780.9	1771.3	1762	1751.1	1738.9	1755
Line amperes	1.04	1.16	1.32	1.53	1.78	2.05	1.68

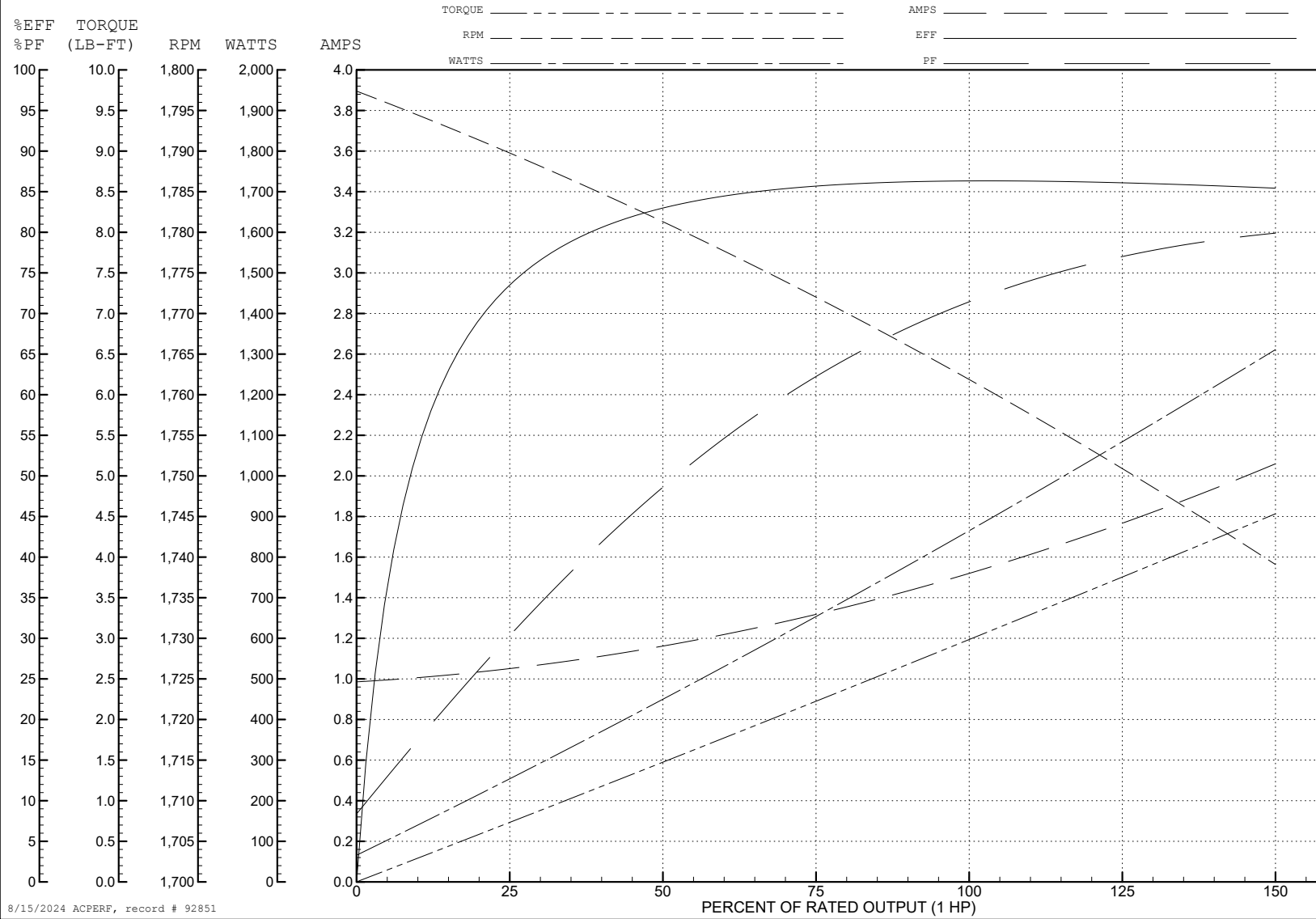
ABB Motors and Mechanical Inc.

WINDING # 35WGM492

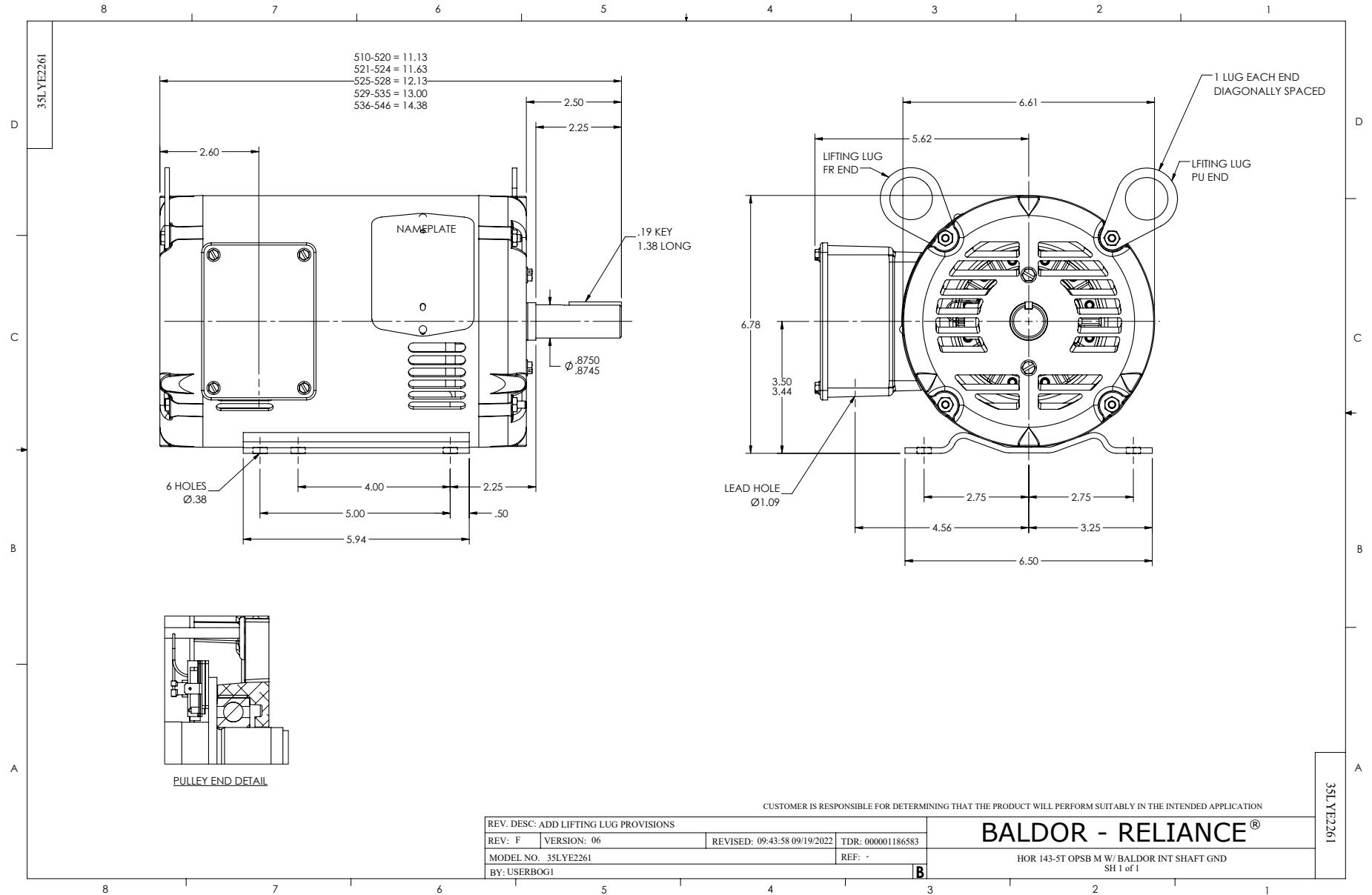
Typical performance - not guaranteed values.

1 HP 3 PH 60 HZ 1760 RPM 460 V 3520M

TORQUES (LB-FT): PO=12.5 PU=7.25 LR=8.87 LRA=12.2



8/15/2024 ACPERF, record # 92851



CD0005



LOW VOLTAGE
(2Y)



LINE

HIGH VOLTAGE
(1Y)



LINE

NOTES:

1. INTERCHANGE ANY TWO LINE LEADS TO REVERSE ROTATION.
2. OPTIONAL THERMOSTATS ARE PROVIDED WHEN SPECIFIED.
3. ACTUAL NUMBER OF INTERNAL PARALLEL CIRCUITS MAY BE A MULTIPLE OF THOSE SHOWN ABOVE.
4. LEAD COLORS ARE OPTIONAL. LEADS MUST ALWAYS BE NUMBERED AS SHOWN.

CD0005

REV. DESC: REVISE TO SHOW OPTIONAL COLORS			
REV. LTR: E	BY: JLP	REVISED: 01/19/99 10:15	TDR: 0171435
S00000		FILE: AAA00005140	MDL: -
		MTL: -	

BALDOR ELECTRIC Co.

3PH, DV, 9 LEADS