

BALDOR • RELIANCE

Customer information packet

EM31116A

1HP, 1760RPM, 3PH, 60HZ, 56, 3520M, OPEN, F1, N

Class - None

Division - Not Applicable

Copyright © All product information within this document is subject to ABB Motors and Mechanical Inc. copyright © protection, unless otherwise noted.

9/12/2024 8:24:10 PM

Specifications

Enclosure	OPEN
Frame	56
Frame Material	Steel
Frequency	60.00 Hz
Haz Area Class and Group	None
Haz Area Division	Not Applicable
Motor Letter Type	Three Phase
Output @ Frequency	1.000 HP @ 60 HZ
Phase	3
Synchronous Speed @ Frequency	1800 RPM @ 60 HZ
Voltage @ Frequency	460.0 V @ 60 HZ 230.0 V @ 60 HZ
Agency Approvals	CURUSEEV
Ambient Temperature	40 °C
Auxillary Box	No Auxillary Box
Auxillary Box Lead Termination	None
Base Indicator	Rigid
Bearing Grease Type	Polyrex EM (-20F +300F)
Blower	None
Current @ Voltage	3.100 A @ 208.0 V 3.000 A @ 230.0 V 1.500 A @ 460.0 V
Design Code	B
Drip Cover	No Drip Cover
Duty Rating	CONT
Efficiency @ 100% Load	85.5 %
Electrically Isolated Bearing	Not Electrically Isolated
Feedback Device	NO FEEDBACK
Front Face Code	Standard
Front Shaft Indicator	None
Heater Indicator	No Heater
High Voltage Full Load Amps	1.5 a

Part detail

Revision	P
Type	AC
Mech. spec.	35B011
Base	
Status	PRD/A
Elec. spec.	35WGL242
Layout	35LYB011
Eff. date	07-01-2024
CD Diagram	CD0007
Poles	04
Leads	12#18
Proprietary	False
Created date	02-12-2015

Insulation Class	F
Inverter Code	Not Inverter
IP Rating	NONE
KVA Code	L
Lifting Lugs	No Lifting Lugs
Locked Bearing Indicator	No Locked Bearing
Motor Lead Exit	Ko Box
Motor Lead Quantity/Wire Size	12 @ 18 AWG
Motor Lead Termination	Flying Leads
Motor Standards	NEMA
Motor Type	3520M
Mounting Arrangement	F1
Number of Poles	4
Overall Length	11.07 IN
Power Factor	71
Product Family	General Purpose
Pulley End Bearing Type	Ball
Pulley Face Code	Standard
Pulley Shaft Indicator	Standard
Rodent Screen	None
RoHS Status	ROHS COMPLIANT
Service Factor	1.15
Shaft Diameter	0.625 IN
Shaft Extension Location	Pulley End
Shaft Ground Indicator	No Shaft Grounding
Shaft Rotation	Reversible
Shaft Slinger Indicator	No Slinger
Speed	1760 rpm
Speed Code	Single Speed
Starting Method	Direct on line
Thermal Device - Bearing	None
Thermal Device - Winding	None
Vibration Sensor Indicator	No Vibration Sensor
Winding Thermal 1	Automatic Thermal Overload

Winding Thermal 1 Location

SB

Winding Thermal 2

None

Nameplate

NP3273L									
CAT.NO.	EM31116A								
SPEC.	35B011L242G1								
HP	1								
VOLTS	230/460								
AMP	3/1.5								
RPM	1760								
FRAME	56	HZ	60	PH	3				
SER.F.	1.15	CODE	L	DES	B	CL	F		
F.L. AVG. EFF.	85.5	PF	71						
RATING	40C AMB-CONT								
CC							USABLE AT 208V	N/A	
DE	6205	ODE	6203						
ENCL	OPEN	SN							

AC Induction Motor Performance Data

Record # 62948

Typical performance - not guaranteed values

Winding: 35WGL242-R001		Type: 3520M		Enclosure: OPEN	
Nameplate Data			460 V, 60 Hz: High Voltage Connection		
Rated Output (HP)	1	Full Load Torque	3.01 LB-FT		
Volts	230/460	Start Configuration	direct on line		
Full Load Amps	3/1.5	Breakdown Torque	12.18 LB-FT		
R.P.M.	1760	Pull-up Torque	5.77 LB-FT		
Hz	60 Phase	3	Locked-rotor Torque	8.31 LB-FT	
NEMA Design Code	B KVA Code	L	Starting Current	11.94 A	
Service Factor (S.F.)		1.15	No-load Current	0.993 A	
NEMA Nom. Eff.	85.5 Power Factor	71	Line-line Res. @ 25°C	15.2 Ω	
Rating - Duty	40C AMB-CONT		Temp. Rise @ Rated Load	26°C	
S.F. Amps			Temp. Rise @ S.F. Load	31°C	
			Locked-rotor Power Factor	53.3	
			Rotor inertia	0.118 LB-FT ²	

Load Characteristics 460 V, 60 Hz, 1 HP

% of Rated Load	25	50	75	100	125	150	S.F.
Power Factor	30	49	63	72	76	81	74
Efficiency	72.5	82.7	85.2	85.7	85.3	84.7	85.5
Speed	1791	1782	1772	1761	1750	1738	1754
Line amperes	1.04	1.16	1.32	1.54	1.8	2.07	1.7

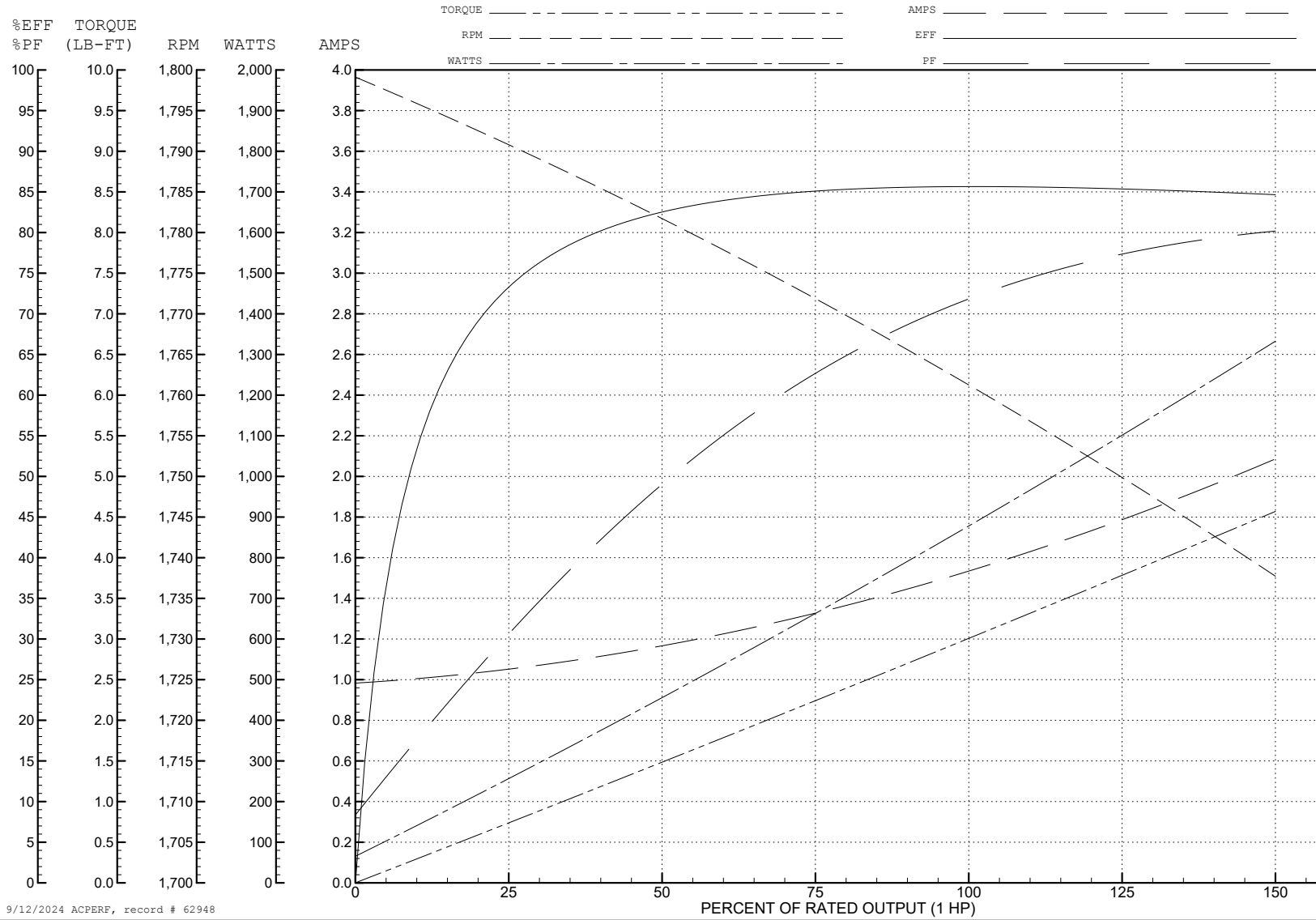
ABB Motors and Mechanical Inc.

WINDING # 35WGL242

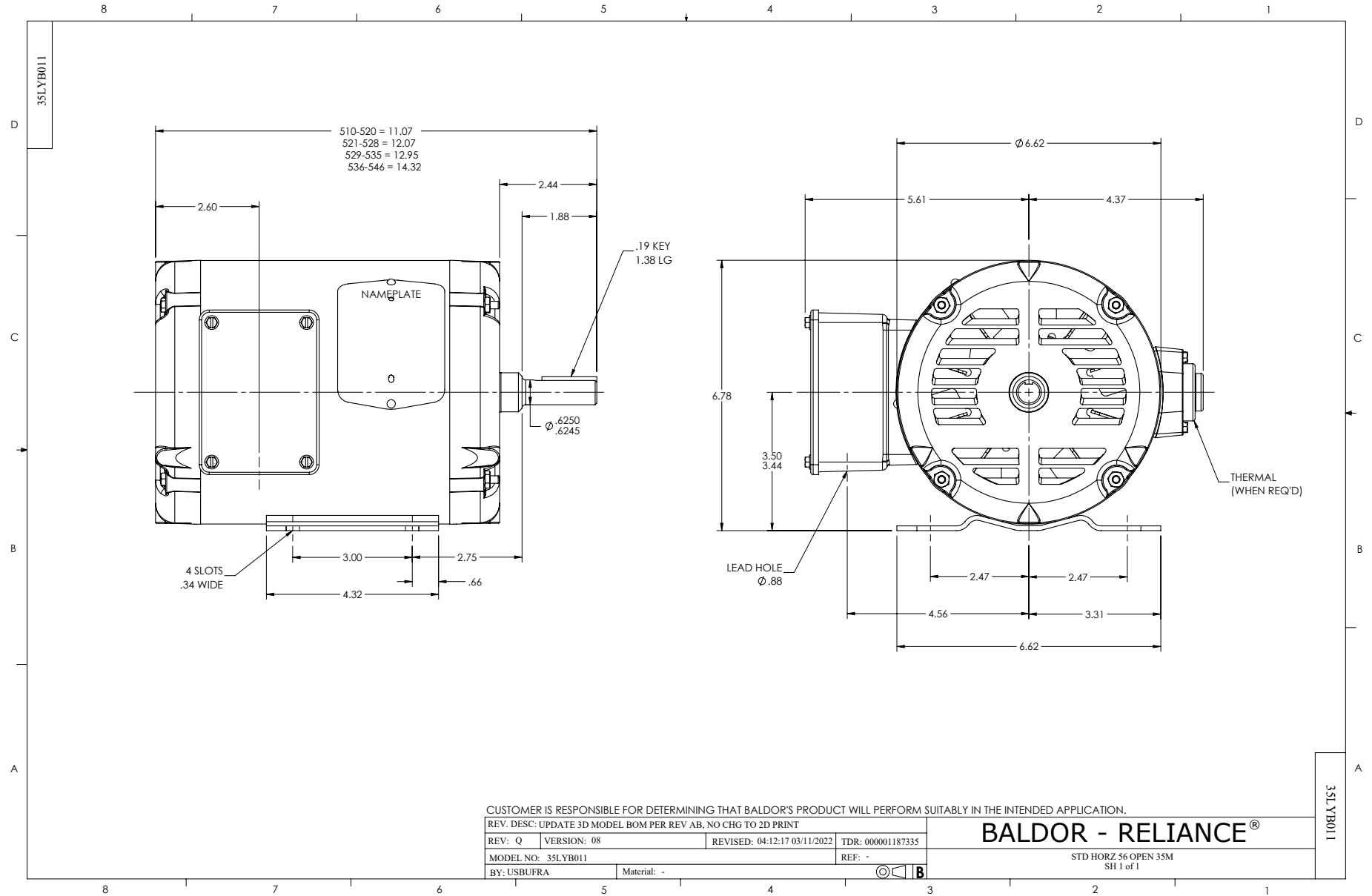
Typical performance - not guaranteed values.

1 HP 3 PH 60 HZ 1760 RPM 460 V 3520M

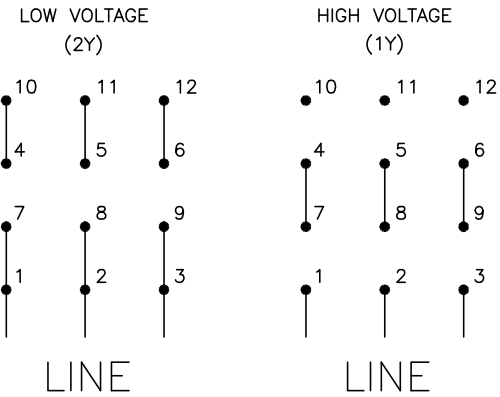
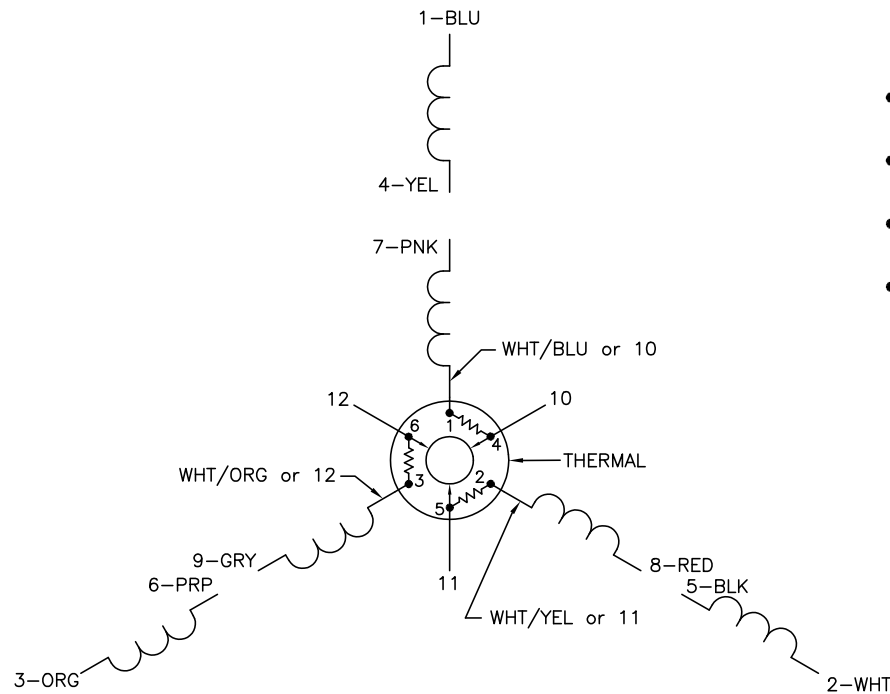
TORQUES (LB-FT): PO=12.18 PU=5.77 LR=8.31 LRA=11.94



9/12/2024 ACPERF, record # 62948



CD0007



NOTES:

1. INTERCHANGE ANY TWO LINE LEADS TO REVERSE ROTATION.
2. ACTUAL NUMBER OF INTERNAL PARALLEL CIRCUITS MAY VARY.
3. LEAD COLORS ARE OPTIONAL. LEADS MUST ALWAYS BE NUMBERED AS SHOWN.

CD0007

REV. DESC: ADDED "CK" PLANT CODE			
REV. LTR: E	BY: EAH	REVISED: 05/06/99 17:1	TDR: 0181040
L00000		FILE: AAA00008370	MDL: -
		MTL: -	

BALDOR ELECTRIC Co.

3PH, DV, THERMAL, 12 LEADS