

ABB BALDOR RELIANCE III

Customer information packet

EM31115

1HP, 3450RPM, 3PH, 60HZ, 56, 3420M, ODP, F1, N

Class - None

Division - Not Applicable

Specifications

Enclosure	ODP
Frame	56
Frame Material	Steel
Frequency	60.00 Hz
Haz Area Class and Group	None
Haz Area Division	Not Applicable
Motor Letter Type	Three Phase
Output @ Frequency	1.000 HP @ 60 HZ
Phase	3
Synchronous Speed @ Frequency	3600 RPM @ 60 HZ
Voltage @ Frequency	230.0 V @ 60 HZ 460.0 V @ 60 HZ
Agency Approvals	CURUSEEV
Ambient Temperature	40 °C
Auxiliary Box	NO AUXILLARY BOX
Auxiliary Box Lead Termination	None
Base Indicator	Rigid
Bearing Grease Type	Polyrex EM (-20F +300F)
Blower	None
Current @ Voltage	1.600 A @ 460.0 V 3.200 A @ 230.0 V 3.500 A @ 208.0 V
Design Code	B
Drip Cover	No Drip Cover
Duty Rating	CONT
Efficiency @ 100% Load	77.0 %
Electrically Isolated Bearing	Not Electrically Isolated
Feedback Device	NO FEEDBACK
Front Face Code	Standard
Front Shaft Indicator	None
Heater Indicator	No Heater
High Voltage Full Load Amps	1.6 a

Part Detail

Revision	J
Type	AC
Mech. spec.	34B061
Base	
Status	PRD/A
Elec. spec.	34WG3226
Layout	34LYB061
Eff. date	12-30-2024
CD Diagram	CD0005
Poles	02
Leads	9#18
Proprietary	False
Created date	02-26-2014

Insulation Class	F
Inverter Code	Not Inverter
KVA Code	L
Lifting Lugs	No Lifting Lugs
Locked Bearing Indicator	No Locked Bearing
Motor Lead Exit	Ko Box
Motor Lead Quantity/Wire Size	9 @ 18 AWG
Motor Lead Termination	Flying Leads
Motor Standards	NEMA
Motor Type	3420M
Mounting Arrangement	F1
Number of Poles	2
Overall Length	10.88 IN
Power Factor	82
Product Family	General Purpose
Pulley End Bearing Type	Ball
Pulley Face Code	Standard
Pulley Shaft Indicator	Standard
Rodent Screen	None
RoHS Status	ROHS COMPLIANT
Service Factor	1.25
Shaft Diameter	0.625 IN
Shaft Extension Location	Pulley End
Shaft Ground Indicator	No Shaft Grounding
Shaft Rotation	Reversible
Shaft Slinger Indicator	No Slinger
Speed	3450 rpm
Speed Code	Single Speed
Starting Method	Direct on line
Thermal Device - Bearing	None
Thermal Device - Winding	None
Vibration Sensor Indicator	No Vibration Sensor
Winding Thermal 1	None
Winding Thermal 2	None

Nameplate

NP3155LUA									
CAT.NO.	EM31115								
SPEC.	34B061-3226G1								
HP	1								
VOLTS	230/460								
AMPS	3.2/1.6								
RPM	3450								
FRAME	56	HZ	60	PH	3				
SF	1.25	CODE	L	DES	B	CLASS	F		
F.L. AVG. EFF.	77	PF	82						
RATING	40C AMB-CONT								
CC									
DE	6203	ODE	6203						
ENCL	ODP	SN							
USABLE AT	50HZ 1HP 190/380V 3.4/1.7A								SF1.0

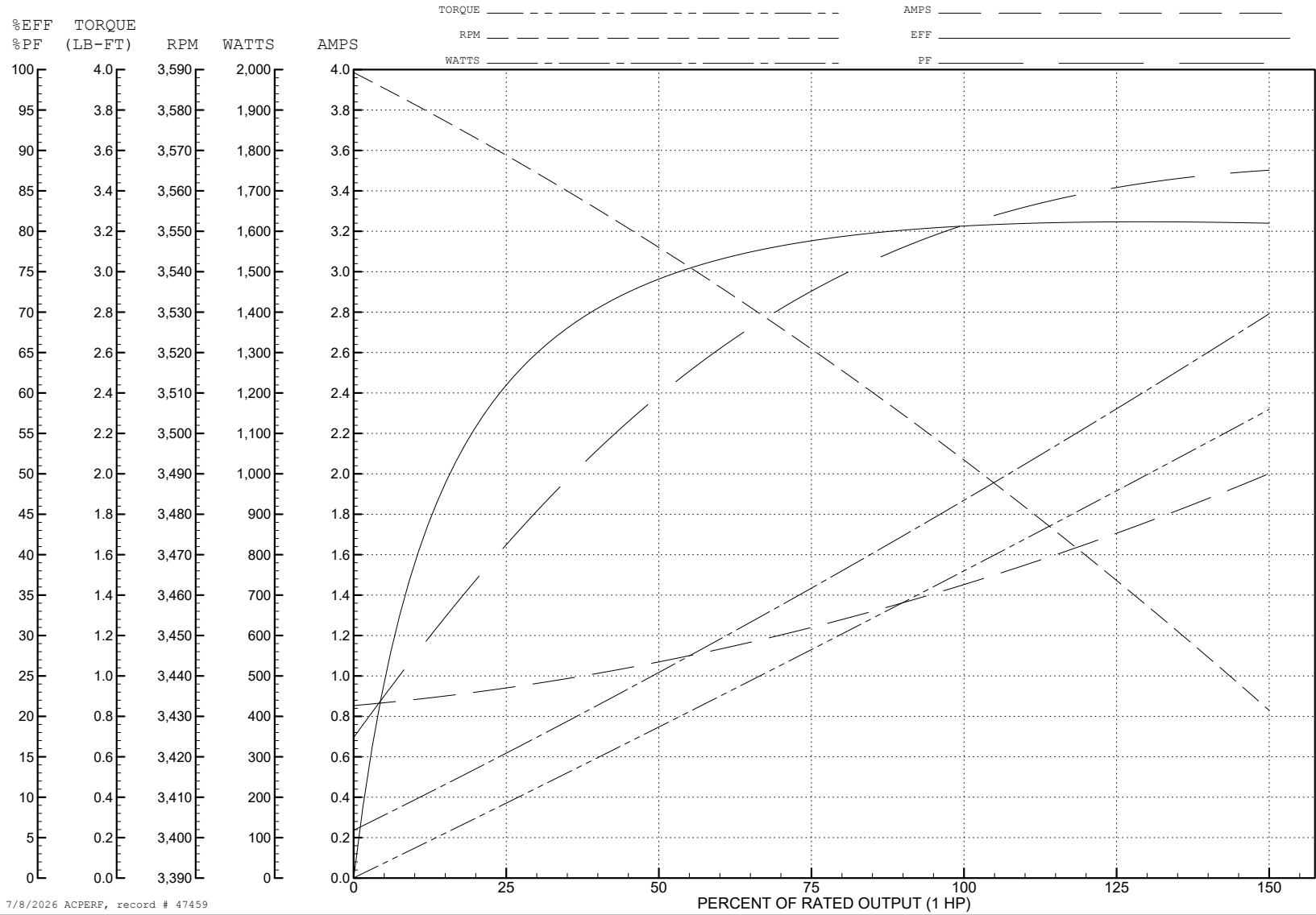
ABB Motors and Mechanical Inc.

WINDING # 34WG3226

Typical performance - not guaranteed values.

1 HP 3 PH 60 HZ 3450 RPM 460 V 3420M

TORQUES (LB-FT): PO=7.7 PU=5.67 LR=7.34 LRA=14.7



7/8/2026 ACPERF, record # 47459

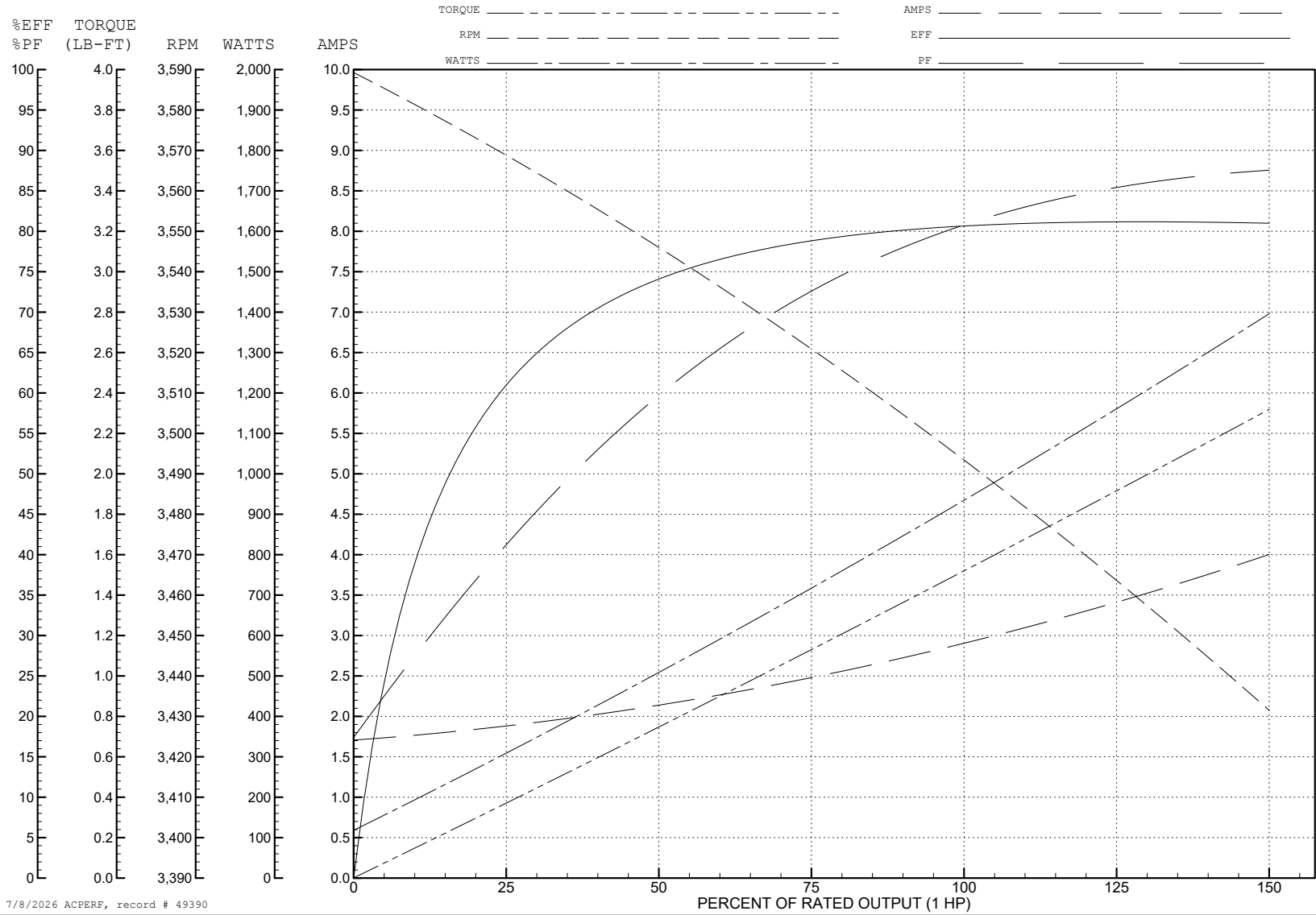
ABB Motors and Mechanical Inc.

WINDING # 34WG3226

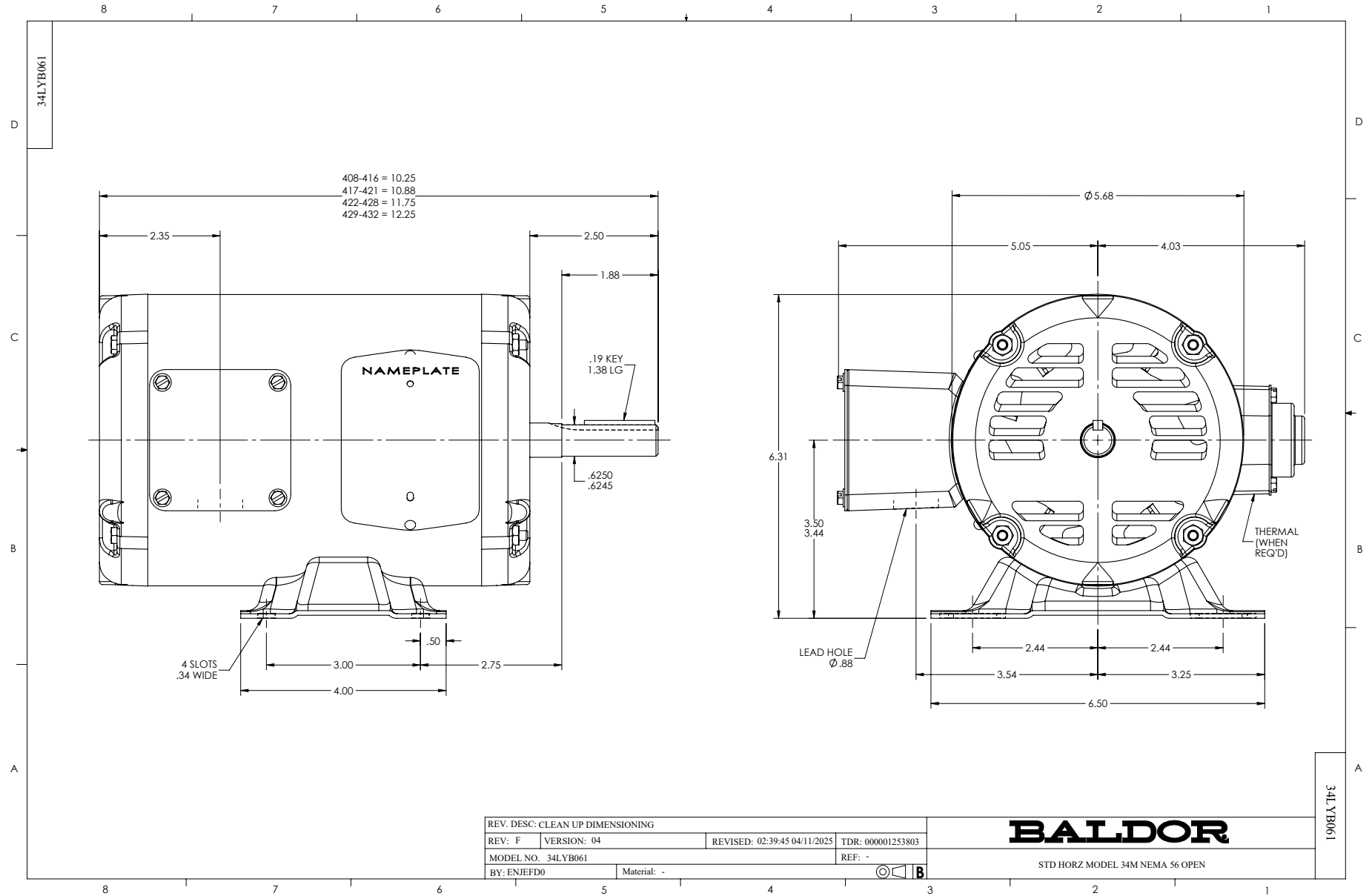
Typical performance - not guaranteed values.

1 HP 3 PH 60 HZ 3450 RPM 230 V 3420M

TORQUES (LB-FT): PO=7.7 PU=5.67 LR=7.34 LRA=29.4



7/8/2026 ACPERF, record # 49390



CD0005



LOW VOLTAGE
(2Y)



LINE

HIGH VOLTAGE
(1Y)



LINE

NOTES:

1. INTERCHANGE ANY TWO LINE LEADS TO REVERSE ROTATION.
2. OPTIONAL THERMOSTATS ARE PROVIDED WHEN SPECIFIED.
3. ACTUAL NUMBER OF INTERNAL PARALLEL CIRCUITS MAY BE A MULTIPLE OF THOSE SHOWN ABOVE.
4. LEAD COLORS ARE OPTIONAL. LEADS MUST ALWAYS BE NUMBERED AS SHOWN.

CD0005

REV. DESC: REVISE TO SHOW OPTIONAL COLORS

REV. LTR: E BY: JLP REVISED: 01/19/99 10:15 TDR: 0171435

500000

FILE: AAA00005140

MDL: -

MTL: -

BALDOR ELECTRIC Co.

3PH, DV, 9 LEADS