

ABB BALDOR RELIANCE III

Customer information packet

EM31112A

.75HP, 1730RPM, 3PH, 60HZ, 56, 3516M, OPEN, F1

Class - None

Division - Not Applicable

Specifications

Enclosure	OPEN
Frame	56
Frame Material	Steel
Frequency	60.00 Hz
Haz Area Class and Group	None
Haz Area Division	Not Applicable
Motor Letter Type	Three Phase
Output @ Frequency	.750 HP @ 60 HZ
Phase	3
Synchronous Speed @ Frequency	1800 RPM @ 60 HZ
Voltage @ Frequency	460.0 V @ 60 HZ 230.0 V @ 60 HZ 208.0 V @ 60 HZ
Agency Approvals	CURUSEEV
Ambient Temperature	40 °C
Auxiliary Box	NO AUXILLARY BOX
Auxiliary Box Lead Termination	None
Base Indicator	Rigid
Bearing Grease Type	Polyrex EM (-20F +300F)
Blower	None
Current @ Voltage	2.200 A @ 208.0 V 2.000 A @ 230.0 V 1.000 A @ 460.0 V
Design Code	B
Drip Cover	No Drip Cover
Duty Rating	CONT
Efficiency @ 100% Load	81.1 %
Electrically Isolated Bearing	Not Electrically Isolated
Feedback Device	NO FEEDBACK
Front Shaft Indicator	None
Heater Indicator	No Heater
High Voltage Full Load Amps	1.0 a

Part Detail

Revision	-
Type	AC
Mech. spec.	35B011
Base	
Status	PRD/A
Elec. spec.	35WGK919
Layout	35LYB011
Eff. date	07-10-2025
CD Diagram	CD0007
Poles	04
Leads	12#18 Y
Proprietary	False
Created date	11-14-2024

Insulation Class	F
Inverter Code	Not Inverter
KVA Code	J
Lifting Lugs	No Lifting Lugs
Locked Bearing Indicator	No Locked Bearing
Motor Lead Quantity/Wire Size	12 @ 18 AWG
Motor Lead Termination	Flying Leads
Motor Standards	NEMA
Motor Type	3516M
Mounting Arrangement	F1
Number of Poles	4
Overall Length	11.07 IN
Power Factor	81
Product Family	General Purpose
Pulley End Bearing Type	Ball
Pulley Face Code	Standard
Pulley Shaft Indicator	Standard
Rodent Screen	None
Service Factor	1.25
Shaft Diameter	0.625 IN
Shaft Ground Indicator	No Shaft Grounding
Shaft Rotation	Reversible
Shaft Slinger Indicator	No Slinger
Speed	1730 rpm
Speed Code	Single Speed
Starting Method	Direct on line
Thermal Device - Bearing	None
Thermal Device - Winding	None
Vibration Sensor Indicator	No Vibration Sensor
Winding Thermal 1	Automatic Thermal Overload
Winding Thermal 1 Location	SB
Winding Thermal 2	None

Nameplate

NP3273L									
CAT.NO.	EM31112A								
SPEC.	35B011K919								
HP	.75								
VOLTS	208-230/460								
AMP	2.2-2/1								
RPM	1730								
FRAME	56	HZ	60	PH	3				
SER.F.	1.25	CODE	J	DES	B	CL	F		
F.L. AVG. EFF.	81.1	PF	81						
RATING	40C AMB-CONT								
CC									
DE	6205	ODE	6203						
ENCL	OPEN	SN							
	SFA 2.8-2.4/1.2								

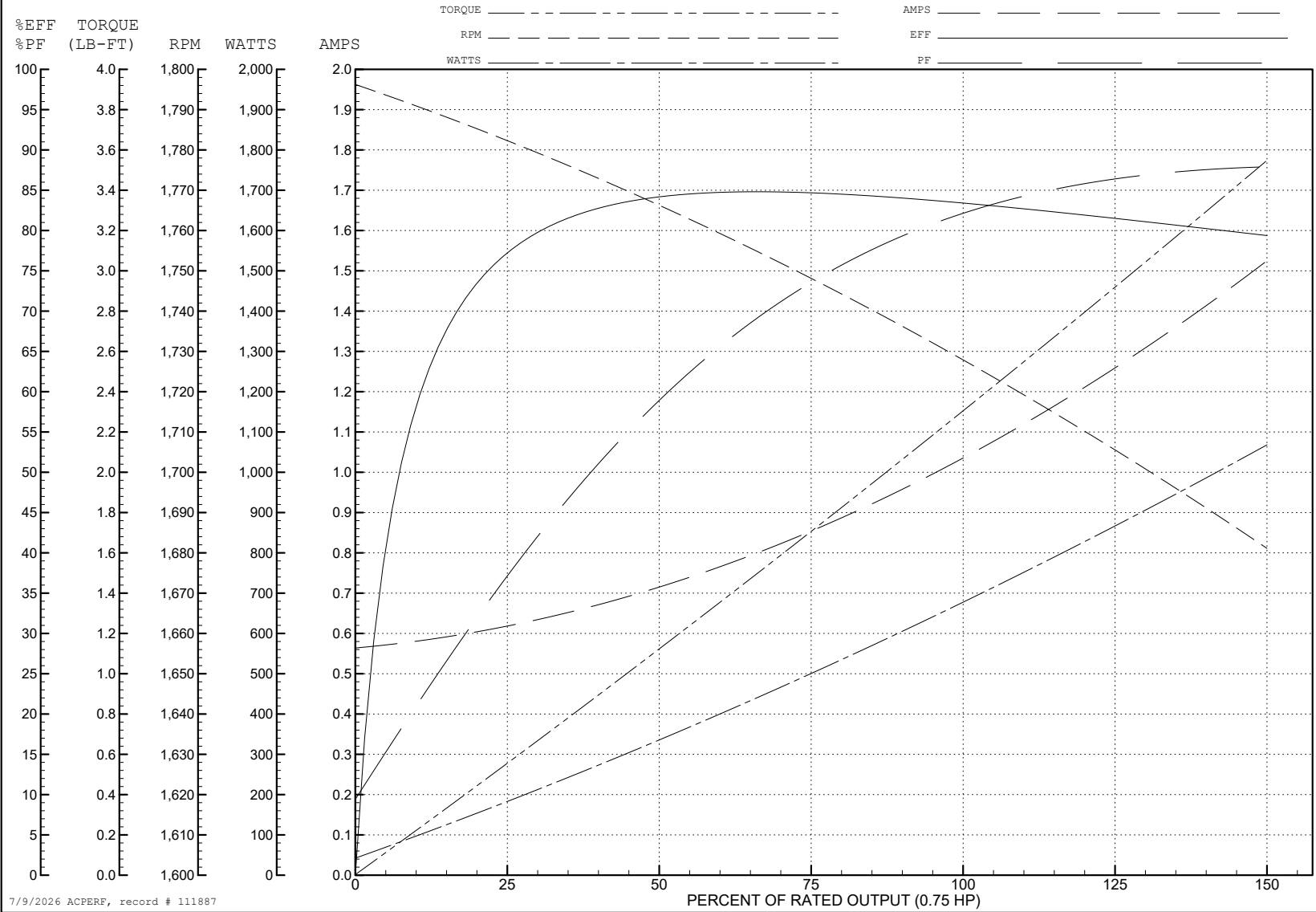
ABB Motors and Mechanical Inc.

WINDING # 35WGK919

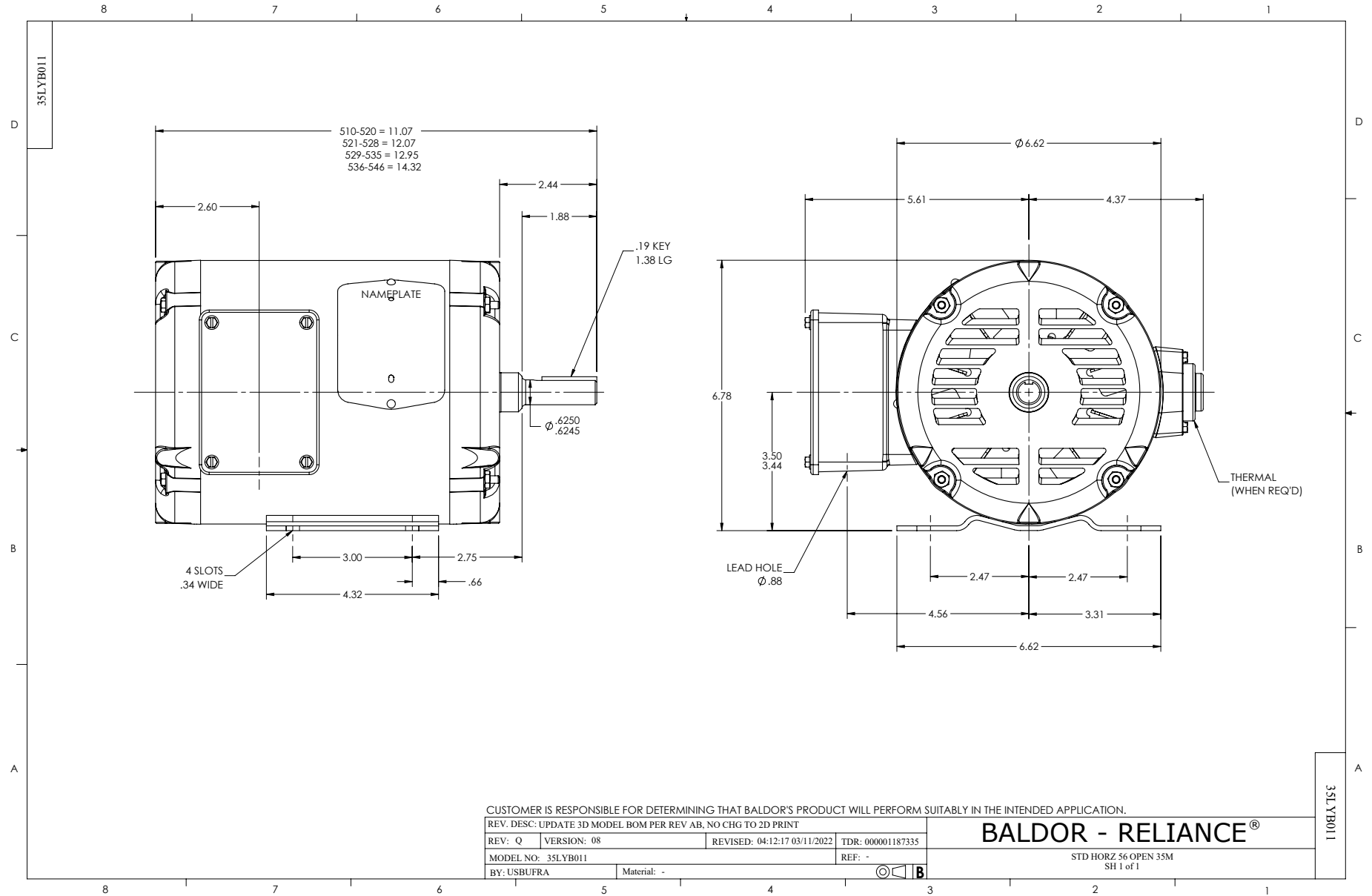
0.75 HP 3 PH 60 HZ 1730 RPM 460 V 3516M

Typical performance - not guaranteed values.

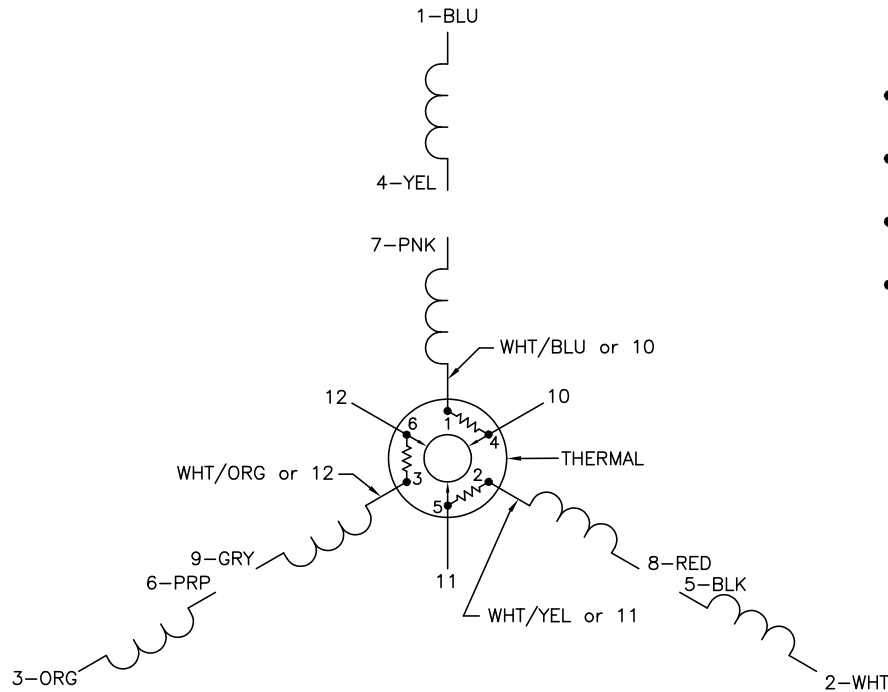
TORQUES (LB-FT): PO=8.65 PU=4.81 LR=5.57 LRA=7.36



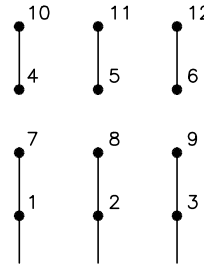
7/9/2026 ACPERF, record # 111887



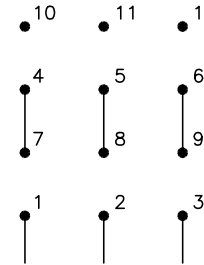
CD0007



LOW VOLTAGE
(2Y)



HIGH VOLTAGE
(1Y)



NOTES:

1. INTERCHANGE ANY TWO LINE LEADS TO REVERSE ROTATION.
2. ACTUAL NUMBER OF INTERNAL PARALLEL CIRCUITS MAY VARY.
3. LEAD COLORS ARE OPTIONAL. LEADS MUST ALWAYS BE NUMBERED AS SHOWN.

CD0007

REV. DESC: ADDED "CK" PLANT CODE			
REV. LTR: E	BY: EAH	REVISED: 05/06/99 17:1	TDR: 0181040
∟00000		FILE: AAA00008370	MDL: -
		MTL: -	

BALDOR ELECTRIC Co.

3PH, DV, THERMAL, 12 LEADS