

# ABB BALDOR RELIANCE III

---

## Customer information packet

### EM31111

.75HP, 3450RPM, 3PH, 60HZ, 56, 3416M, ODP, F1, N

Class - None

Division - Not Applicable

**Specifications**

|                                       |   |
|---------------------------------------|---|
| <b>Enclosure</b>                      | ODP   |
| <b>Frame</b>                          | 56  |
| <b>Frame Material</b>                 | Steel   |
| <b>Frequency</b>                      | 60.00 Hz  |
| <b>Haz Area Class and Group</b>       | None  |
| <b>Haz Area Division</b>              | Not Applicable  |
| <b>Motor Letter Type</b>              | Three Phase   |
| <b>Output @ Frequency</b>             | .750 HP @ 60 HZ   |
| <b>Phase</b>                          | 3   |
| <b>Synchronous Speed @ Frequency</b>  | 3600 RPM @ 60 HZ  |
| <b>Voltage @ Frequency</b>            | 230.0 V @ 60 HZ<br>460.0 V @ 60 HZ                          |
| <b>Agency Approvals</b>               | CURUSEEV  |
| <b>Ambient Temperature</b>            | 40 °C   |
| <b>Auxiliary Box</b>                  | NO AUXILLARY BOX  |
| <b>Auxiliary Box Lead Termination</b> | None  |
| <b>Base Indicator</b>                 | Rigid   |
| <b>Bearing Grease Type</b>            | Polyrex EM (-20F +300F)                                     |
| <b>Blower</b>                         | None  |
| <b>Current @ Voltage</b>              | 1.200 A @ 460.0 V<br>2.400 A @ 230.0 V<br>2.700 A @ 208.0 V |
| <b>Design Code</b>                    | B   |
| <b>Drip Cover</b>                     | No Drip Cover   |
| <b>Duty Rating</b>                    | CONT  |
| <b>Efficiency @ 100% Load</b>         | 76.8 %  |
| <b>Electrically Isolated Bearing</b>  | Not Electrically Isolated                                   |
| <b>Feedback Device</b>                | NO FEEDBACK   |
| <b>Front Face Code</b>                | Standard  |
| <b>Front Shaft Indicator</b>          | None  |
| <b>Heater Indicator</b>               | No Heater   |
| <b>High Voltage Full Load Amps</b>    | 1.2 a   |

**Part Detail**

|                     |            |
|---------------------|------------|
| <b>Revision</b>     | G          |
| <b>Type</b>         | AC         |
| <b>Mech. spec.</b>  | 34B061     |
| <b>Base</b>         |            |
| <b>Status</b>       | PRD/A      |
| <b>Elec. spec.</b>  | 34WGW719   |
| <b>Layout</b>       | 34LYB061   |
| <b>Eff. date</b>    | 12-30-2024 |
| <b>CD Diagram</b>   | CD0005     |
| <b>Poles</b>        | 02         |
| <b>Leads</b>        | 9#18       |
| <b>Proprietary</b>  | False      |
| <b>Created date</b> | 02-26-2014 |

|                                      |                     |
|--------------------------------------|---------------------|
| <b>Insulation Class</b>              | F                   |
| <b>Inverter Code</b>                 | Not Inverter        |
| <b>KVA Code</b>                      | L                   |
| <b>Lifting Lugs</b>                  | No Lifting Lugs     |
| <b>Locked Bearing Indicator</b>      | No Locked Bearing   |
| <b>Motor Lead Exit</b>               | Ko Box              |
| <b>Motor Lead Quantity/Wire Size</b> | 9 @ 18 AWG          |
| <b>Motor Lead Termination</b>        | Flying Leads        |
| <b>Motor Standards</b>               | NEMA                |
| <b>Motor Type</b>                    | 3416M               |
| <b>Mounting Arrangement</b>          | F1                  |
| <b>Number of Poles</b>               | 2                   |
| <b>Overall Length</b>                | 10.25 IN            |
| <b>Power Factor</b>                  | 80                  |
| <b>Product Family</b>                | General Purpose     |
| <b>Pulley End Bearing Type</b>       | Ball                |
| <b>Pulley Face Code</b>              | Standard            |
| <b>Pulley Shaft Indicator</b>        | Standard            |
| <b>Rodent Screen</b>                 | None                |
| <b>RoHS Status</b>                   | ROHS COMPLIANT      |
| <b>Service Factor</b>                | 1.25                |
| <b>Shaft Diameter</b>                | 0.625 IN            |
| <b>Shaft Extension Location</b>      | Pulley End          |
| <b>Shaft Ground Indicator</b>        | No Shaft Grounding  |
| <b>Shaft Rotation</b>                | Reversible          |
| <b>Shaft Slinger Indicator</b>       | No Slinger          |
| <b>Speed</b>                         | 3450 rpm            |
| <b>Speed Code</b>                    | Single Speed        |
| <b>Starting Method</b>               | Direct on line      |
| <b>Thermal Device - Bearing</b>      | None                |
| <b>Thermal Device - Winding</b>      | None                |
| <b>Vibration Sensor Indicator</b>    | No Vibration Sensor |
| <b>Winding Thermal 1</b>             | None                |
| <b>Winding Thermal 2</b>             | None                |

**Nameplate**

| <b>NP3155L</b>        |              |             |      |            |   |           |   |  |  |
|-----------------------|--------------|-------------|------|------------|---|-----------|---|--|--|
| <b>CAT.NO.</b>        | EM31111      |             |      |            |   |           |   |  |  |
| <b>SPEC.</b>          | 34B061W719G1 |             |      |            |   |           |   |  |  |
| <b>HP</b>             | .75          |             |      |            |   |           |   |  |  |
| <b>VOLTS</b>          | 230/460      |             |      |            |   |           |   |  |  |
| <b>AMP</b>            | 2.4/1.2      |             |      |            |   |           |   |  |  |
| <b>RPM</b>            | 3450         |             |      |            |   |           |   |  |  |
| <b>FRAME</b>          | 56           | <b>HZ</b>   | 60   | <b>PH</b>  | 3 |           |   |  |  |
| <b>SER.F.</b>         | 1.25         | <b>CODE</b> | L    | <b>DES</b> | B | <b>CL</b> | F |  |  |
| <b>F.L. AVG. EFF.</b> | 76.8         | <b>PF</b>   | 80   |            |   |           |   |  |  |
| <b>RATING</b>         | 40C AMB-CONT |             |      |            |   |           |   |  |  |
| <b>CC</b>             |              |             |      |            |   |           |   |  |  |
| <b>DE</b>             | 6203         | <b>ODE</b>  | 6203 |            |   |           |   |  |  |
| <b>ENCL</b>           | ODP          | <b>SN</b>   |      |            |   |           |   |  |  |
|                       | SFA 2.8/1.4  |             |      |            |   |           |   |  |  |

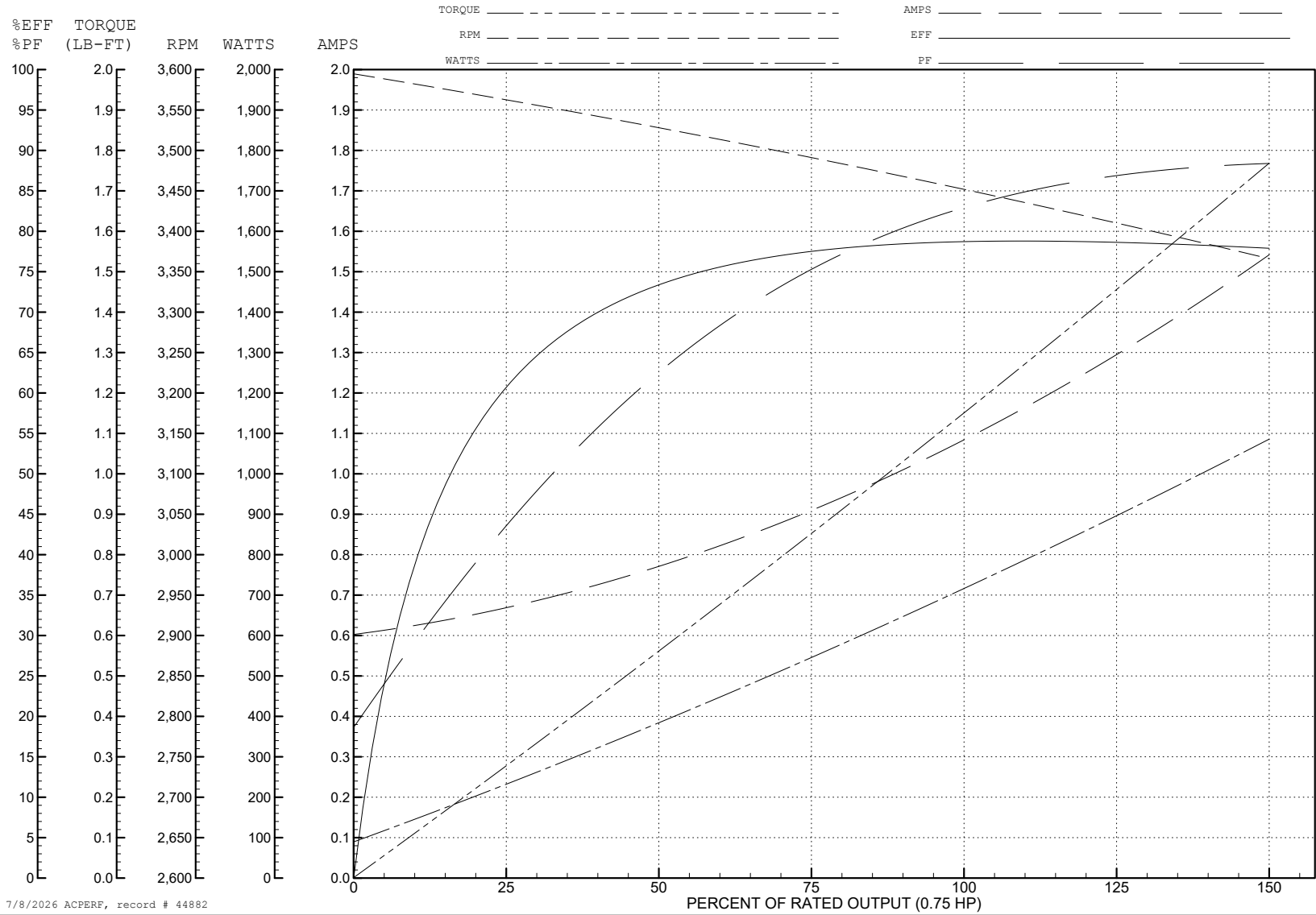
ABB Motors and Mechanical Inc.

WINDING # 34WG719

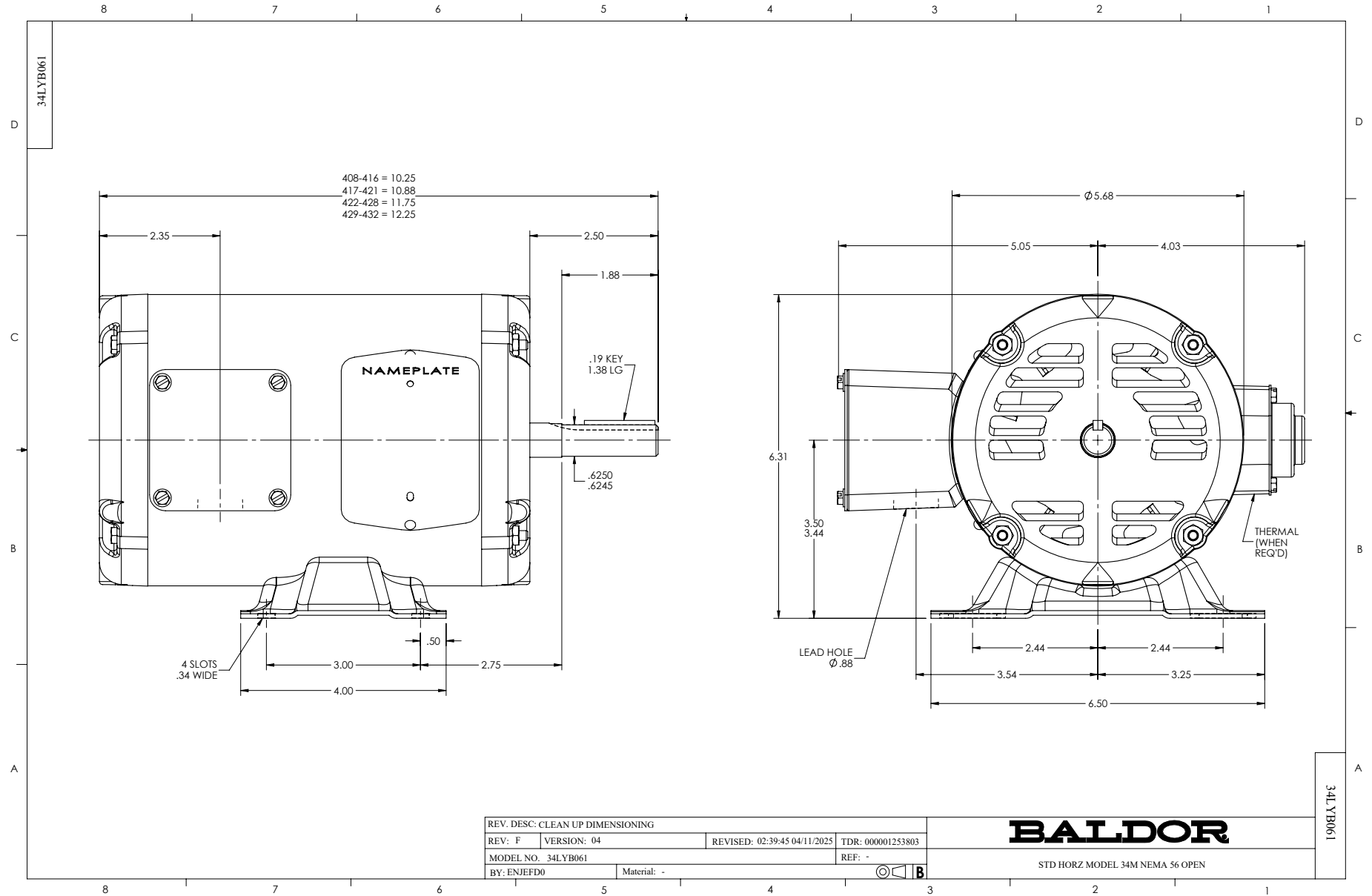
Typical performance - not guaranteed values.

0.75 HP 3 PH 60 HZ 3450 RPM 460 V 3416M

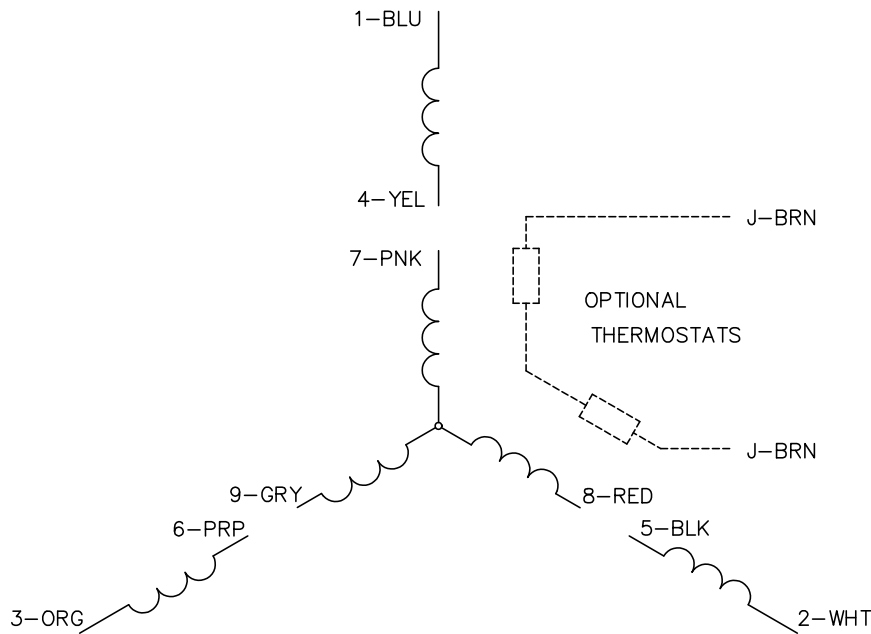
TORQUES (LB-FT): PO=5.62 PU=3.98 LR=5.14 LRA=9.2



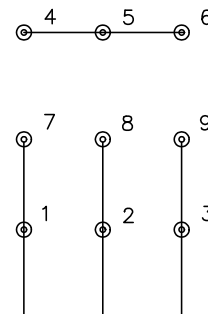
7/8/2026 ACPERF, record # 44882



CD0005

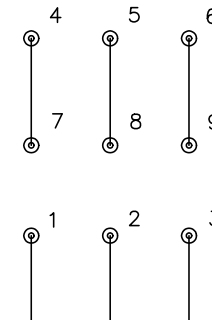


LOW VOLTAGE  
(2Y)



LINE

HIGH VOLTAGE  
(1Y)



LINE

**NOTES:**

1. INTERCHANGE ANY TWO LINE LEADS TO REVERSE ROTATION.
2. OPTIONAL THERMOSTATS ARE PROVIDED WHEN SPECIFIED.
3. ACTUAL NUMBER OF INTERNAL PARALLEL CIRCUITS MAY BE A MULTIPLE OF THOSE SHOWN ABOVE.
4. LEAD COLORS ARE OPTIONAL. LEADS MUST ALWAYS BE NUMBERED AS SHOWN.

CD0005

|   |         |                         |              |
|---|---------|-------------------------|--------------|
| REV. DESC: REVISE TO SHOW OPTIONAL COLORS |         |                         |              |
| REV. LTR: E                               | BY: JLP | REVISED: 01/19/99 10:15 | TDR: 0171435 |
| S00000                                    |         | FILE: AAA00005140       | MDL: -       |
|   |         | MTL: -                  |              |

**BALDOR ELECTRIC Co.**

3PH, DV, 9 LEADS