



Customer information packet

EM30008

.33HP, 1140RPM, 3PH, 60HZ, 48, 3421M, OPEN, F1

Class - None

Division - Not Applicable

Specifications

| | |
|--------------------------------|--|
| Enclosure | OPEN |
| Frame | 48 |
| Frame Material | Steel |
| Frequency | 60.00 Hz |
| Haz Area Class and Group | None |
| Haz Area Division | Not Applicable |
| Motor Letter Type | Three Phase |
| Output @ Frequency | .330 HP @ 60 HZ |
| Phase | 3 |
| Synchronous Speed @ Frequency | 1200 RPM @ 60 HZ |
| Voltage @ Frequency | 230.0 V @ 60 HZ 460.0 V @ 60 HZ |
| Agency Approvals | CURUSEEV |
| Ambient Temperature | 40 °C |
| Auxillary Box | No Auxillary Box |
| Auxillary Box Lead Termination | None |
| Base Indicator | Rigid |
| Bearing Grease Type | Polyrex EM (-20F +300F) |
| Blower | None |
| Current @ Voltage | .900 A @ 460.0 V 1.600 A @ 208.0 V 1.900 A @ 230.0 V |
| Design Code | B |
| Drip Cover | No Drip Cover |
| Duty Rating | CONT |
| Efficiency @ 100% Load | 71.4 % |
| Electrically Isolated Bearing | Not Electrically Isolated |
| Feedback Device | NO FEEDBACK |
| Front Face Code | Standard |
| Front Shaft Indicator | None |
| Heater Indicator | No Heater |
| High Voltage Full Load Amps | 0.9 a |

Part detail

| | |
|--------------|------------|
| Revision | E |
| Type | AC |
| Mech. spec. | 34F002 |
| Base | |
| Status | PRD/A |
| Elec. spec. | 34WGR139 |
| Layout | 34LYF002 |
| Eff. date | 05-16-2024 |
| CD Diagram | CD0005 |
| Poles | 06 |
| Leads | 9#18 |
| Proprietary | False |
| Created date | 10-03-2014 |

| | |
|--------------------------------------|---------------------|
| Insulation Class | B |
| Inverter Code | Not Inverter |
| KVA Code | M |
| Lifting Lugs | No Lifting Lugs |
| Locked Bearing Indicator | No Locked Bearing |
| Motor Lead Exit | Ko Box |
| Motor Lead Quantity/Wire Size | 9 @ 18 AWG |
| Motor Lead Termination | Flying Leads |
| Motor Standards | NEMA |
| Motor Type | 3421M |
| Mounting Arrangement | F1 |
| Number of Poles | 6 |
| Overall Length | 9.75 IN |
| Power Factor | 51 |
| Product Family | General Purpose |
| Pulley End Bearing Type | Ball |
| Pulley Face Code | Standard |
| Pulley Shaft Indicator | Standard |
| Rodent Screen | None |
| RoHS Status | ROHS COMPLIANT |
| Service Factor | 1.35 |
| Shaft Diameter | 0.500 IN |
| Shaft Extension Location | Pulley End |
| Shaft Ground Indicator | No Shaft Grounding |
| Shaft Rotation | Reversible |
| Shaft Slinger Indicator | No Slinger |
| Speed | 1140 rpm |
| Speed Code | Single Speed |
| Starting Method | Direct on line |
| Thermal Device - Bearing | None |
| Thermal Device - Winding | None |
| Vibration Sensor Indicator | No Vibration Sensor |
| Winding Thermal 1 | None |
| Winding Thermal 2 | None |

Nameplate

| NP3155L | | | | | | | | | |
|-----------------------|--------------|-------------|------------|------------|---|-----------|---|--|--|
| CAT.NO. | EM30008 | | | | | | | | |
| SPEC. | 34F002R139G1 | | | | | | | | |
| HP | .33 | | | | | | | | |
| VOLTS | 230/460 | | | | | | | | |
| AMP | 1.9/.9 | | | | | | | | |
| RPM | 1140 | | | | | | | | |
| FRAME | 48 | | HZ | 60 | | PH | 3 | | |
| SER.F. | 1.35 | CODE | M | DES | B | CL | B | | |
| F.L. AVG. EFF. | 71.4 | PF | 51 | | | | | | |
| RATING | 40C AMB-CONT | | | | | | | | |
| CC | | | | | | | | | |
| DE | 6203 | | ODE | 6203 | | | | | |
| ENCL | OPEN | SN | | | | | | | |
| | SFA 2/1 | | | | | | | | |

AC Induction Motor Performance Data

Record # 47463

Typical performance - not guaranteed values

| Winding: 34WGR139-R002 | | Type: 3421M | Enclosure: OPEN |
|------------------------|-------------------|--|---------------------------|
| Nameplate Data | | 460 V, 60 Hz: High Voltage Connection | |
| Rated Output (HP) | .33 | Full Load Torque | 1.55 LB-FT |
| Volts | 230/460 | Start Configuration | direct on line |
| Full Load Amps | 1.9/.9 | Breakdown Torque | 6.67 LB-FT |
| R.P.M. | 1140 | Pull-up Torque | 4.76 LB-FT |
| Hz | 60 Phase | Locked-rotor Torque | 6.04 LB-FT |
| NEMA Design Code | B KVA Code | Starting Current | 4.63 A |
| Service Factor (S.F.) | 1.35 | No-load Current | 0.717 A |
| NEMA Nom. Eff. | 71.4 Power Factor | Line-line Res. @ 25°C | 39.9 Ω |
| Rating - Duty | 40C AMB-CONT | Temp. Rise @ Rated Load | 38°C |
| S.F. Amps | 2/1 | Temp. Rise @ S.F. Load | 46°C |
| | | Locked-rotor Power Factor | 61 |
| | | Rotor inertia | 0.0499 LB-FT ² |

Load Characteristics 460 V, 60 Hz, 0.33 HP

| % of Rated Load | 25 | 50 | 75 | 100 | 125 | 150 | S.F. |
|-----------------|-------|-------|-------|-------|-------|------|-------|
| Power Factor | 22 | 33 | 43 | 51 | 58 | 64 | 60 |
| Efficiency | 49.7 | 64.3 | 69.7 | 72.5 | 72.8 | 72.9 | 72.8 |
| Speed | 1189 | 1179 | 1168 | 1156 | 1142 | 1128 | 1136 |
| Line amperes | 0.733 | 0.758 | 0.806 | 0.864 | 0.925 | 1.01 | 0.959 |

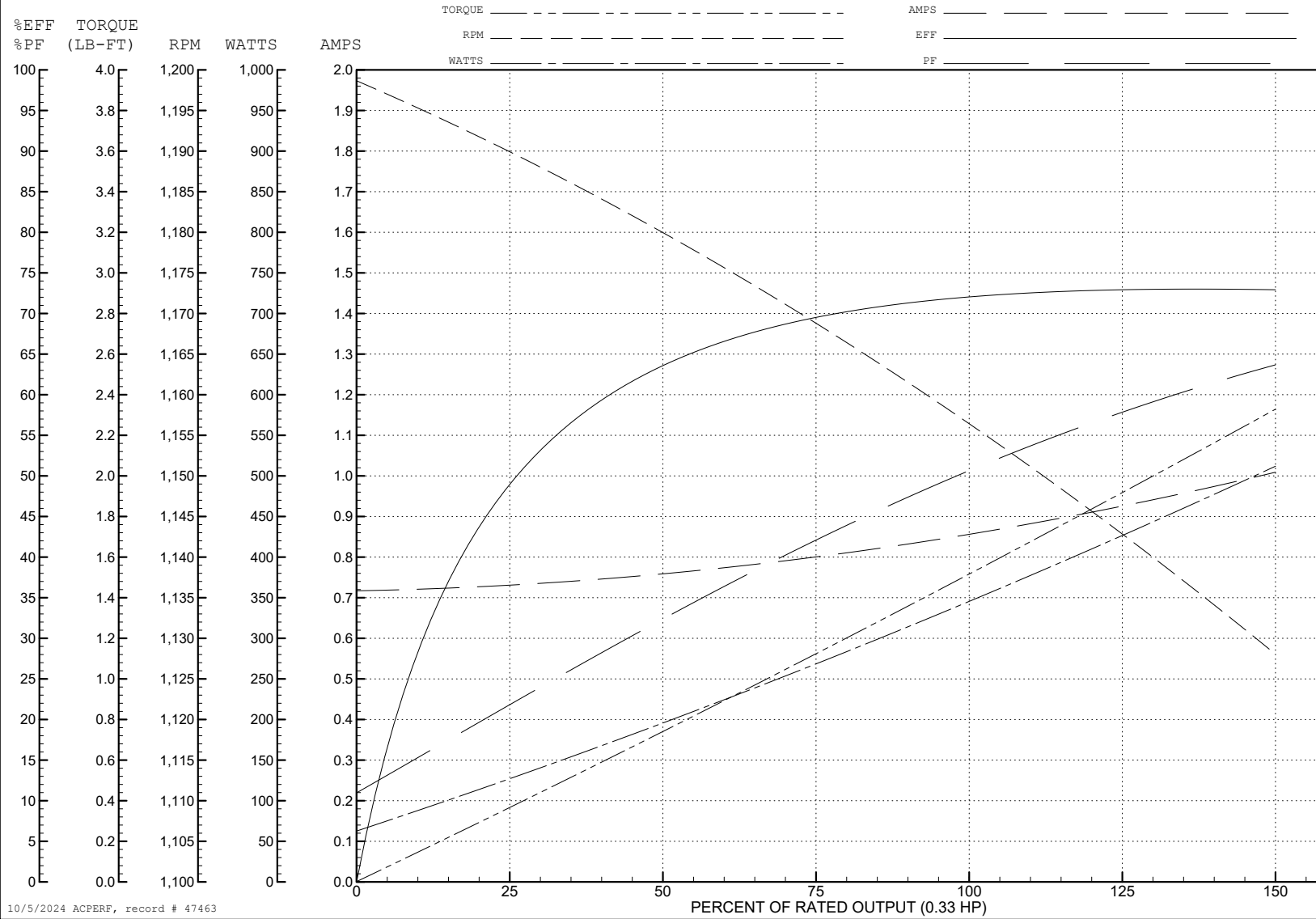
ABB Motors and Mechanical Inc.

WINDING # 34WGR139

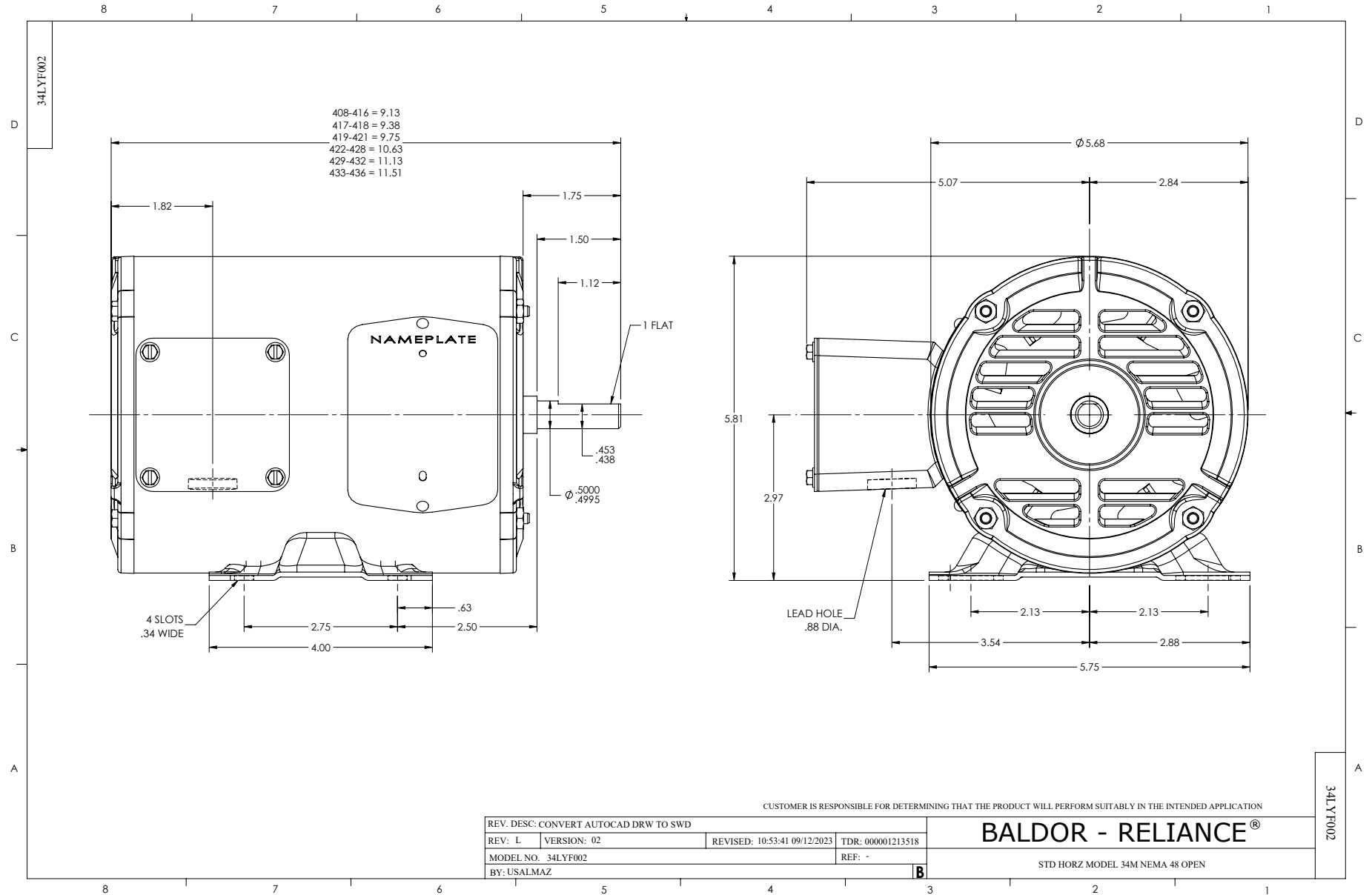
Typical performance - not guaranteed values.

0.33 HP 3 PH 60 HZ 1140 RPM 460 V 3421M

TORQUES (LB-FT): PO=6.67 PU=4.76 LR=6.04 LRA=4.63



10/5/2024 ACPERF, record # 47463



CD0005



LOW VOLTAGE
(2Y)



LINE

HIGH VOLTAGE
(1Y)



LINE

NOTES:

1. INTERCHANGE ANY TWO LINE LEADS TO REVERSE ROTATION.
2. OPTIONAL THERMOSTATS ARE PROVIDED WHEN SPECIFIED.
3. ACTUAL NUMBER OF INTERNAL PARALLEL CIRCUITS MAY BE A MULTIPLE OF THOSE SHOWN ABOVE.
4. LEAD COLORS ARE OPTIONAL. LEADS MUST ALWAYS BE NUMBERED AS SHOWN.

CD0005

| | | | |
|---|---------|-------------------------|--------------|
| REV. DESC: REVISE TO SHOW OPTIONAL COLORS | | | |
| REV. LTR: E | BY: JLP | REVISED: 01/19/99 10:15 | TDR: 0171435 |
| S00000 | | FILE: AAA00005140 | MDL: - |
| | | MTL: - | |

BALDOR ELECTRIC Co.

3PH, DV, 9 LEADS