



Customer information packet

EM30004

.25HP, 1140RPM, 3PH, 60HZ, 48, 3416M, OPEN, F1

Class - None

Division - Not Applicable

Specifications

Enclosure	OPEN
Frame	48
Frame Material	Steel
Frequency	60.00 Hz
Haz Area Class and Group	None
Haz Area Division	Not Applicable
Motor Letter Type	Three Phase
Output @ Frequency	.250 HP @ 60 HZ
Phase	3
Synchronous Speed @ Frequency	1200 RPM @ 60 HZ
Voltage @ Frequency	230.0 V @ 60 HZ 460.0 V @ 60 HZ
Agency Approvals	CURUSEEV
Ambient Temperature	40 °C
Auxillary Box	No Auxillary Box
Auxillary Box Lead Termination	None
Base Indicator	Rigid
Bearing Grease Type	Polyrex EM (-20F +300F)
Blower	None
Current @ Voltage	.700 A @ 460.0 V 1.400 A @ 230.0 V 1.700 A @ 208.0 V
Design Code	B
Drip Cover	No Drip Cover
Duty Rating	CONT
Efficiency @ 100% Load	67.5 %
Electrically Isolated Bearing	Not Electrically Isolated
Feedback Device	NO FEEDBACK
Front Face Code	Standard
Front Shaft Indicator	None
Heater Indicator	No Heater
High Voltage Full Load Amps	0.7 a

Part detail

Revision	E
Type	AC
Mech. spec.	34F002
Base	
Status	PRD/A
Elec. spec.	34WGR138
Layout	34LYF002
Eff. date	05-16-2024
CD Diagram	CD0005
Poles	06
Leads	9#18
Proprietary	False
Created date	10-03-2014

Insulation Class	B
Inverter Code	Not Inverter
KVA Code	N
Lifting Lugs	No Lifting Lugs
Locked Bearing Indicator	No Locked Bearing
Motor Lead Exit	Ko Box
Motor Lead Quantity/Wire Size	9 @ 18 AWG
Motor Lead Termination	Flying Leads
Motor Standards	NEMA
Motor Type	3416M
Mounting Arrangement	F1
Number of Poles	6
Overall Length	9.13 IN
Power Factor	48
Product Family	General Purpose
Pulley End Bearing Type	Ball
Pulley Face Code	Standard
Pulley Shaft Indicator	Standard
Rodent Screen	None
RoHS Status	ROHS COMPLIANT
Service Factor	1.35
Shaft Diameter	0.500 IN
Shaft Extension Location	Pulley End
Shaft Ground Indicator	No Shaft Grounding
Shaft Rotation	Reversible
Shaft Slinger Indicator	No Slinger
Speed	1140 rpm
Speed Code	Single Speed
Starting Method	Direct on line
Thermal Device - Bearing	None
Thermal Device - Winding	None
Vibration Sensor Indicator	No Vibration Sensor
Winding Thermal 1	None
Winding Thermal 2	None

Nameplate

NP3155L									
CAT.NO.	EM30004								
SPEC.	34F002R138G1								
HP	.25								
VOLTS	230/460								
AMP	1.4/.7								
RPM	1140								
FRAME	48		HZ	60		PH	3		
SER.F.	1.35	CODE	N	DES	B	CL	B		
F.L. AVG. EFF.	67.5	PF	48						
RATING	40C AMB-CONT								
CC									
DE	6203		ODE	6203					
ENCL	OPEN	SN							
	SFA 1.6/.8								

AC Induction Motor Performance Data

Record # 47465

Typical performance - not guaranteed values

Winding: 34WGR138-R002		Type: 3416M	Enclosure: OPEN	
Nameplate Data			460 V, 60 Hz: High Voltage Connection	
Rated Output (HP)	.25	Full Load Torque	1.14 LB-FT	
Volts	230/460	Start Configuration	direct on line	
Full Load Amps	1.4/.7	Breakdown Torque	5.98 LB-FT	
R.P.M.	1140	Pull-up Torque	3.59 LB-FT	
Hz	60 Phase	3	Locked-rotor Torque	4.66 LB-FT
NEMA Design Code	B KVA Code	N	Starting Current	3.58 A
Service Factor (S.F.)	1.35	No-load Current	0.639 A	
NEMA Nom. Eff.	67.5 Power Factor	48	Line-line Res. @ 25°C	55.4 Ω
Rating - Duty	40C AMB-CONT	Temp. Rise @ Rated Load	37°C	
S.F. Amps	1.6/.8	Temp. Rise @ S.F. Load	43°C	
		Locked-rotor Power Factor	65	
		Rotor inertia	0.038 LB-FT ²	

Load Characteristics 460 V, 60 Hz, 0.25 HP

% of Rated Load	25	50	75	100	125	150	S.F.
Power Factor	22	31	39	47	54	60	56
Efficiency	42.6	57.9	65.1	68.7	70.8	71.3	71
Speed	1187	1178	1169	1158	1146	1132	1140
Line amperes	0.644	0.664	0.693	0.727	0.769	0.821	0.79

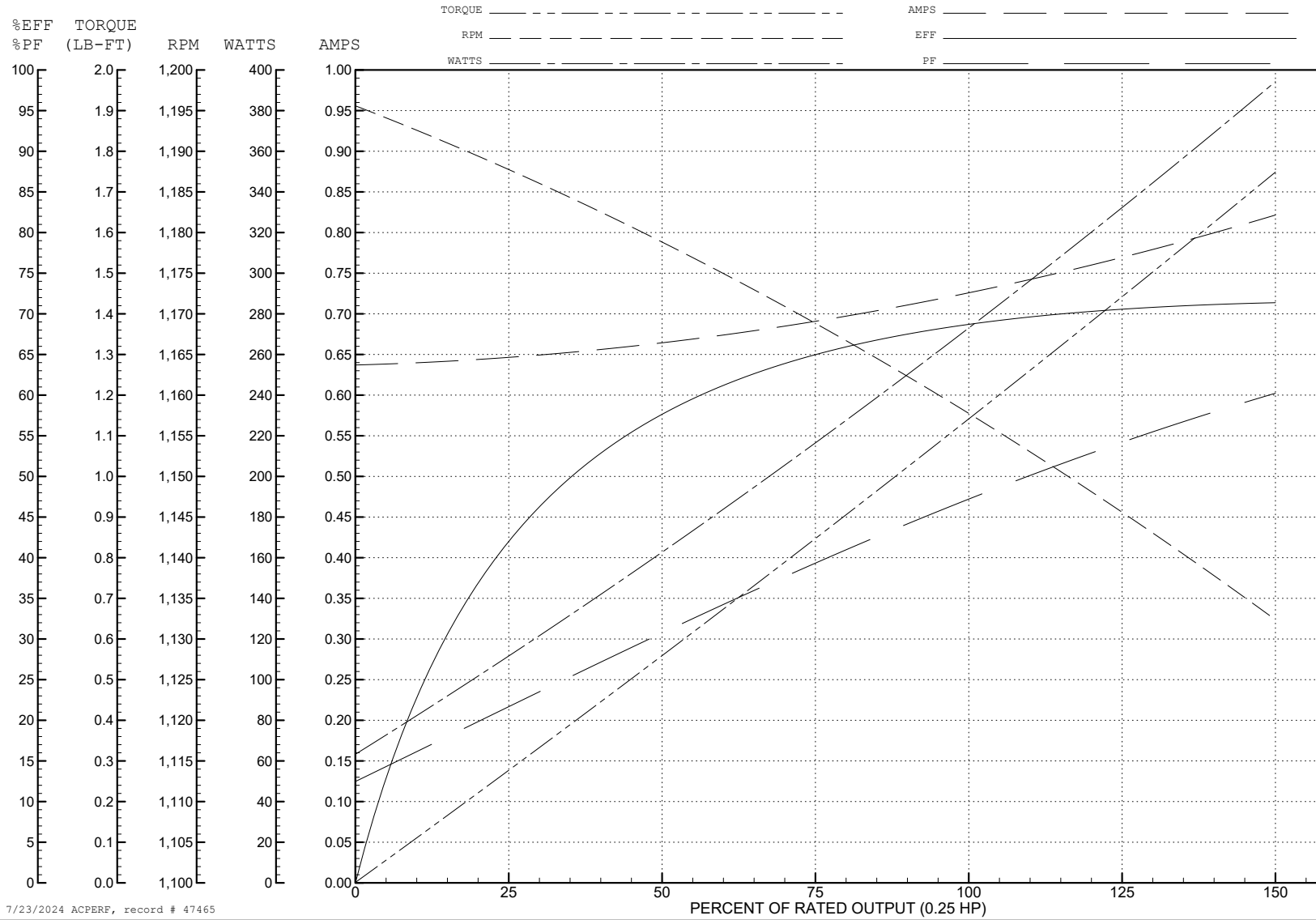
ABB Motors and Mechanical Inc.

WINDING # 34WGR138

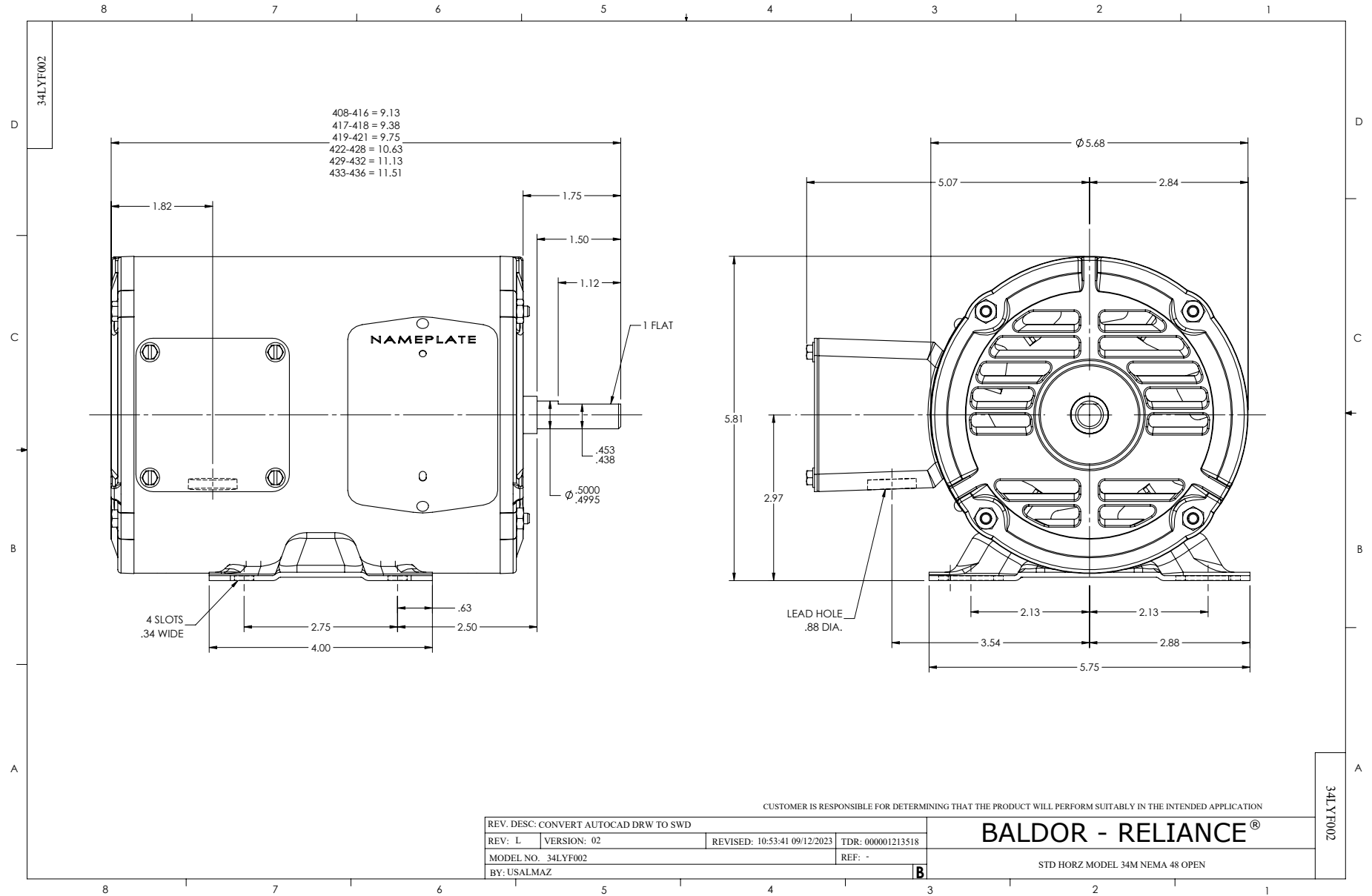
0.25 HP 3 PH 60 HZ 1140 RPM 460 V 3416M

Typical performance - not guaranteed values.

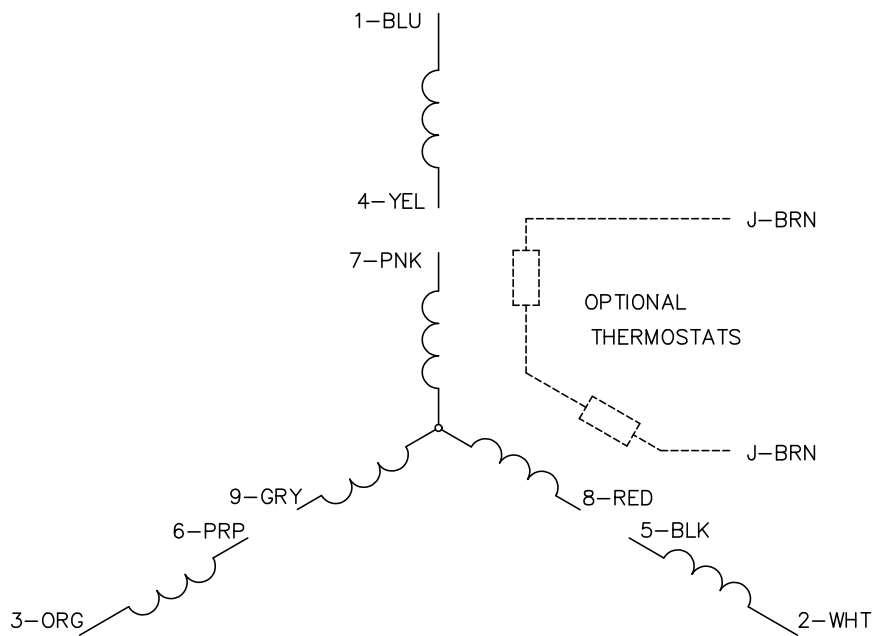
TORQUES (LB-FT): PO=5.98 PU=3.59 LR=4.66 LRA=3.58



7/23/2024 ACPERF, record # 47465



CD0005



LOW VOLTAGE (2Y)



LINE

HIGH VOLTAGE (1Y)



LINE

NOTES:

1. INTERCHANGE ANY TWO LINE LEADS TO REVERSE ROTATION.
2. OPTIONAL THERMOSTATS ARE PROVIDED WHEN SPECIFIED.
3. ACTUAL NUMBER OF INTERNAL PARALLEL CIRCUITS MAY BE A MULTIPLE OF THOSE SHOWN ABOVE.
4. LEAD COLORS ARE OPTIONAL. LEADS MUST ALWAYS BE NUMBERED AS SHOWN.

CD0005

REV. DESC: REVISE TO SHOW OPTIONAL COLORS			
REV. LTR: E	BY: JLP	REVISED: 01/19/99 10:15	TDR: 0171435
S00000		FILE: AAA00005140	MDL: -
		MTL: -	

BALDOR ELECTRIC Co.

3PH, DV, 9 LEADS