

ABB BALDOR RELIANCE III

Customer information packet

EM2572T-4

350HP, 1780RPM, 3PH, 60HZ, 449T, DP, F1

Class - None

Division - Not Applicable

Specifications

Enclosure	DP
Frame	449T
Frame Material	Iron
Frequency	60.00 Hz
Haz Area Class and Group	None
Haz Area Division	Not Applicable
Motor Letter Type	Three Phase
Output @ Frequency	350.000 HP @ 60 HZ
Phase	3
Synchronous Speed @ Frequency	1800 RPM @ 60 HZ
Voltage @ Frequency	460.0 V @ 60 HZ
Agency Approvals	CURUSEEV
Ambient Temperature	40 °C
Auxiliary Box	NO AUXILLARY BOX
Base Indicator	Rigid
Bearing Grease Type	Polyrex EM (-20F +300F)
Current @ Voltage	382.000 A @ 460.0 V
Design Code	B
Drip Cover	No Drip Cover
Duty Rating	CONT
Efficiency @ 100% Load	96.2 %
Feedback Device	NO FEEDBACK
Heater Indicator	No Heater
High Voltage Full Load Amps	382.0 a
Insulation Class	F
Inverter Code	Inverter Ready
IP Rating	NONE
KVA Code	F
Lifting Lugs	Standard Lifting Lugs
Motor Lead Quantity/Wire Size	12 @ 2 AWG
Motor Standards	NEMA
Motor Type	A44128M

Part Detail

Revision	A
Type	AC
Mech. spec.	
Base	
Status	PRD/A
Elec. spec.	A44WG3196
Layout	604989-505
Eff. date	03-01-2017
CD Diagram	416820-008
Poles	04
Leads	6#2 (02 per group)
Proprietary	False
Created date	11-25-2015


Mounting Arrangement	F1
Number of Poles	4
Overall Length	48.12 IN
Power Factor	89
Product Family	General Industrial
Pulley End Bearing Type	Ball
Pulley Face Code	Standard
Service Factor	1.15
Shaft Diameter	3.375 IN
Shaft Ground Indicator	No Shaft Grounding
Shaft Rotation	Reversible
Shaft Slinger Indicator	No Slinger
Speed	1780 rpm
Speed Code	Single Speed
Starting Method	Wye Start - Delta Run
Thermal Device - Bearing	None
Thermal Device - Winding	None

Nameplate

NP2496L
MOBIL POLYREX EM

NP2349L

SPEC NO.	A44-8066-3196	CAT.NO.	EM2572T-4	FRAME	449T
HP	350	VOLTS	460	PHASE	3
RPM	1780	AMPS	382	DESIGN	B
DRIVE END BEARING	90BC03J30X	DUTY	CONT	TYPE	P
OPP D.E. BEARING	90BC03J30X	ENCL	DP	INSUL.CLASS	F
SER.NO.		CODE	F	POWER FACTOR	89
				NEMA-NOM-EFFICIENCY	96.2
				MAX CORR KVAR	48
				GUARANTEED EFFICIENCY	95.4
				NEMA NOM/CSA QUOTED EFF	
				MOTOR WEIGHT	2694

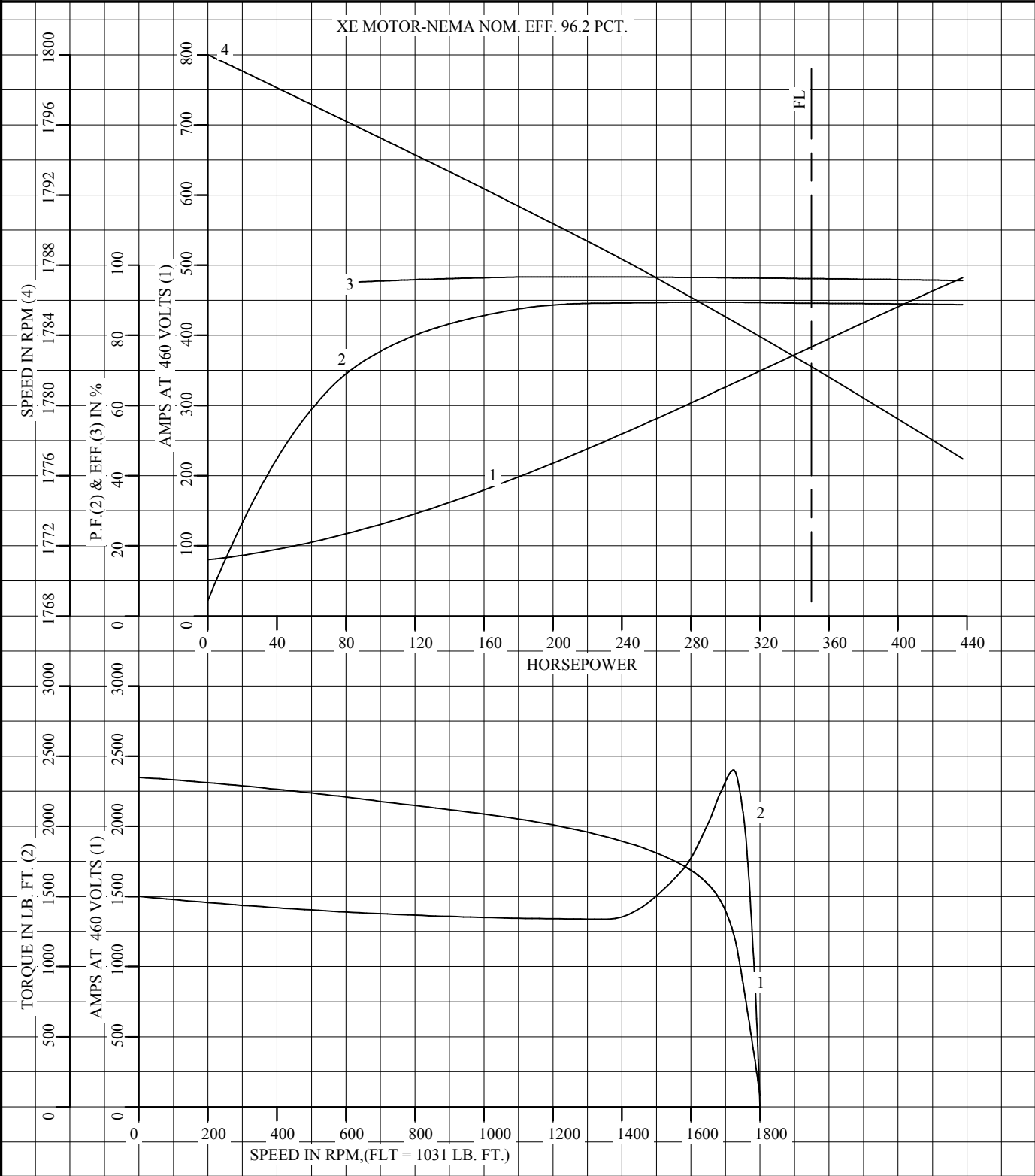
REL. S.O.	FRAME	HP	TYPE	PHASE/ HERTZ	RPM	VOLTS
	449T	350	P	3/60	1780	460
AMPS	DUTY	AMB °C/ INSUL.	S.F.	NEMA DESIGN	CODE LETTER	ENCL.
382	CONT	40/B	1.15	B	F	PRXE
E/S	ROTOR	TEST S.O.	TEST DATE	STATOR RES. @25 °C OHMS (BETWEEN LINES)		
433856	418143049LE	---	---	.0126		
PERFORMANCE						
LOAD	HP	AMPERES	RPM	% POWER FACTOR	% EFFICIENCY	
NO LOAD	0	80.6	1800	4.45	0	
1/4	87.6	120	1796	71.8	95.2	
2/4	175	195	1792	87.1	96.6	
3/4	262	285	1787	89.4	96.6	
4/4	350	382	1782	89.2	96.2	
5/4	438	483	1777	88.8	95.6	
SPEED TORQUE						
		RPM	TORQUE % FULL LOAD	TORQUE LB.-FT.	AMPERES	
LOCKED ROTOR		0	146	1501	2349	
PULL UP		1360	130	1339	1921	
BREAKDOWN		1723	233	2400	1233	
FULL LOAD		1782	100	1031	382	
<p>AMPERES SHOWN FOR 460. VOLT CONNECTION. IF OTHER VOLTAGE CONNECTIONS ARE AVAILABLE, THE AMPERES WILL VARY INVERSELY WITH THE RATED VOLTAGE</p> <p>REMARKS: CALCULATED DATA XE MOTOR-NEMA NOM. EFF. 96.2 PCT.</p>						
		DR. BY W. L. SMITH		A-C MOTOR PERFORMANCE A44WG3196-R001 DATA		
		CK. BY J. J. HARRISON				
		APP. BY W. L. SMITH				
		DATE 07/27/05				

FRAME 449T
HP 350
TYPE P
PHASE/HERTZ 3/60

VOLTS 460
AMPS 382
DUTY CONT
AMB °C/INSUL 40/B

NEMA DESIGN B
CODE LETTER F
ENCLOSURE PRXE
E/S 433856

TEST S.O. CALCULATED DATA
TEST DATE ---
STATOR RES. @ 25 °C .0126
OHMS (BETWEEN LINES)



AMPERS SHOWN FOR 460 VOLT CONNECTION, IF OTHER VOLTAGE CONNECTIONS ARE AVAILABLE, THE AMPERS WILL VARY INVERSELY WITH THE RATED VOLTAGE.



DR. BY W. L. SMITH
CK. BY J.J.HARRISON
APP. BY W. L. SMITH
DATE 07/27/05

**A-C MOTOR
PERFORMANCE CURVES** A44WG3196-R001
ISSUE DATE 07/25/05

DUTY MASTER ALTERNATING CURRENT MOTORS
SQUIRREL-CAGE INDUCTION

604989-505

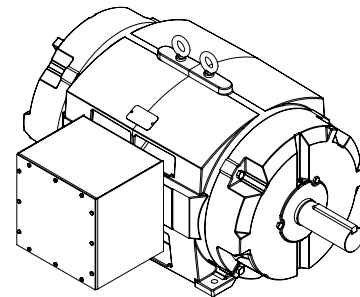
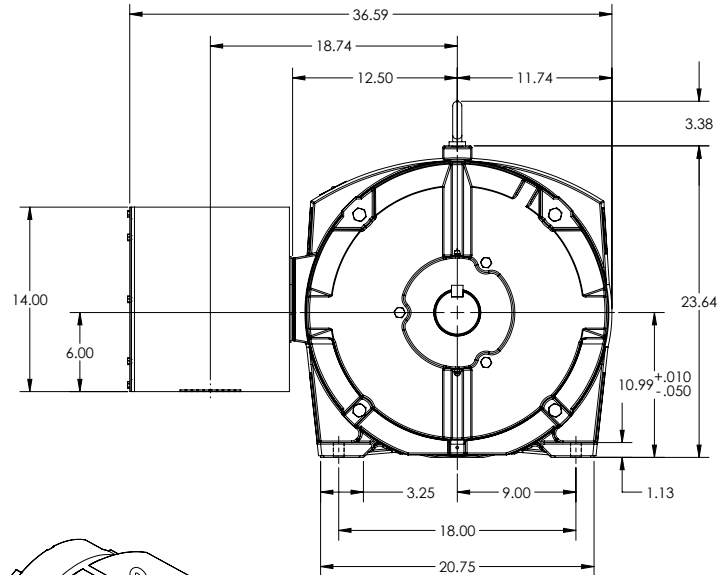
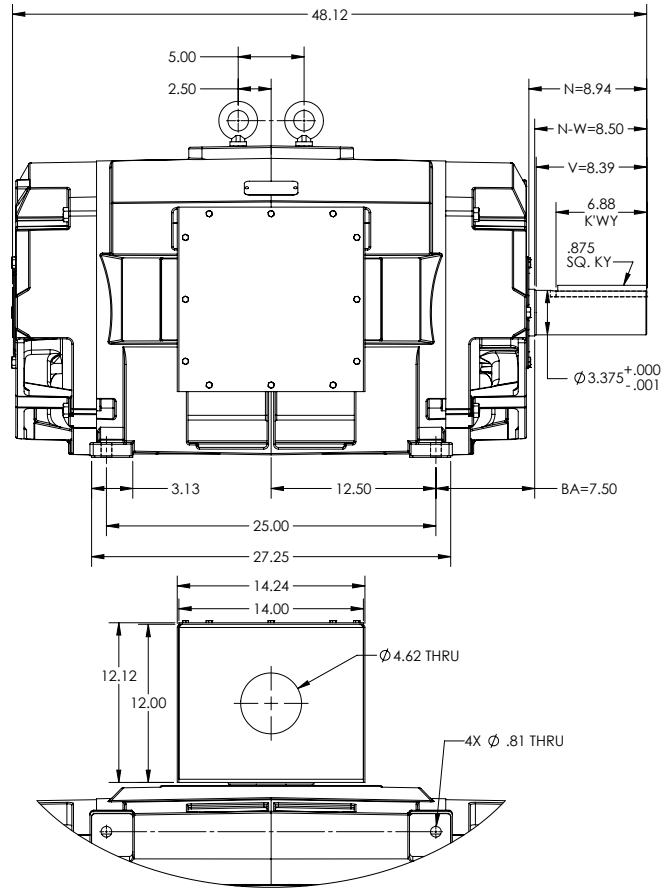
ENCLOSURE: PROTECTED; OPEN DRIP PROOF

FRAME E449T

COOLING: SELF-VENTILATED

MOUNTING: FOOT, F-1 SIDE

14X14X12 FABRICATED STEEL C/BOX



IF MOUNTING CLEARANCE DETAILS ARE REQUIRED, CONSULT FACTORY.

MAXIMUM PERMISSIBLE SHAFT RUNOUT WHEN MEASURED AT END OF STANDARD SHAFT EXTENSION IS .003" T.I.R.

MOTOR WEIGHT: 2100 LBS
*MAY VARY BY 15% DEPENDING ON RATING

DIMENSIONS ARE IN INCHES

CUSTOMER IS RESPONSIBLE FOR DETERMINING THAT MOTOR PERFORMANCE IS SUITABLE IN THE APPLICATION.

SHEET NUMBER
1 OF 1

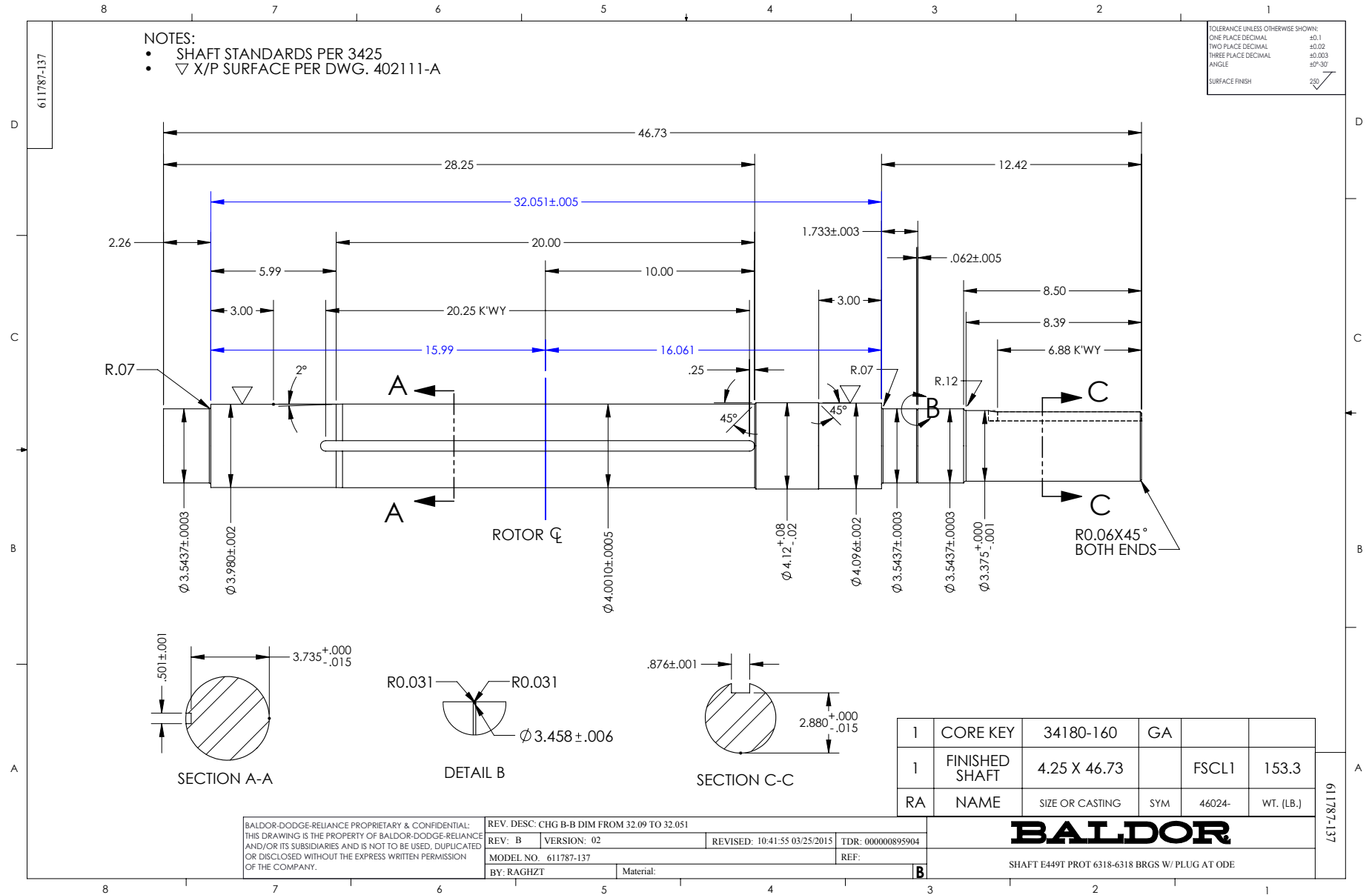
S05-686F09

REV. DESC: UPDATE MODEL TO ADD EXTERNAL HARDWARE PER PROD MGM			
REV: B	VERSION: 02	REVISED: 07-28-44 07/14/2022	TDR: 000001193529
MODEL NO. 604989-505			
BY: USBUFRA			

BALDOR

449T PROT F-1 FT - 14X14X12 FAB STL C/BOX

S05-686F09

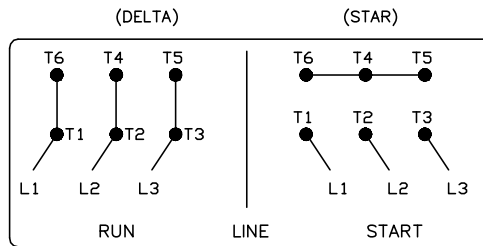
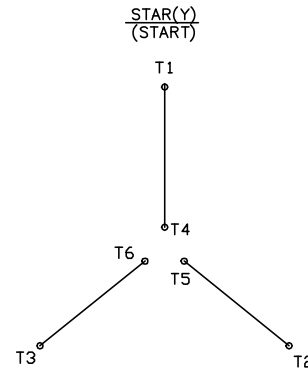
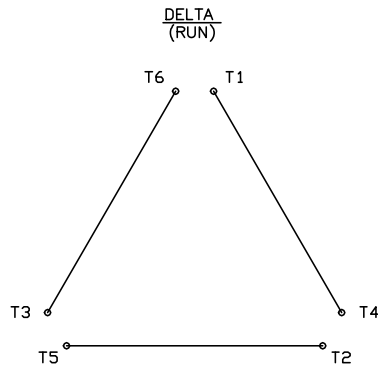


416820-008

A-C MOTOR CONNECTION DIAGRAM

STANDARD 6 LEAD

Y START - DELTA RUN



< N. P. 1767-DC >

REV. DESC: ADDED T4 TO Y CONNECT DIAGRAM		
REV. LTR: D	VERSION: 04	TDR: 00000847713
FILE: \RAG\00001\808	REVISED: 10: 41: 26 04/08/2014	BY: RAGJSS1
MTL: -	© □	

BALDOR

CONNECT DIAGRAM STD 6 LEAD Y START DELTA RUN

SH 1 of 1

416820-008