

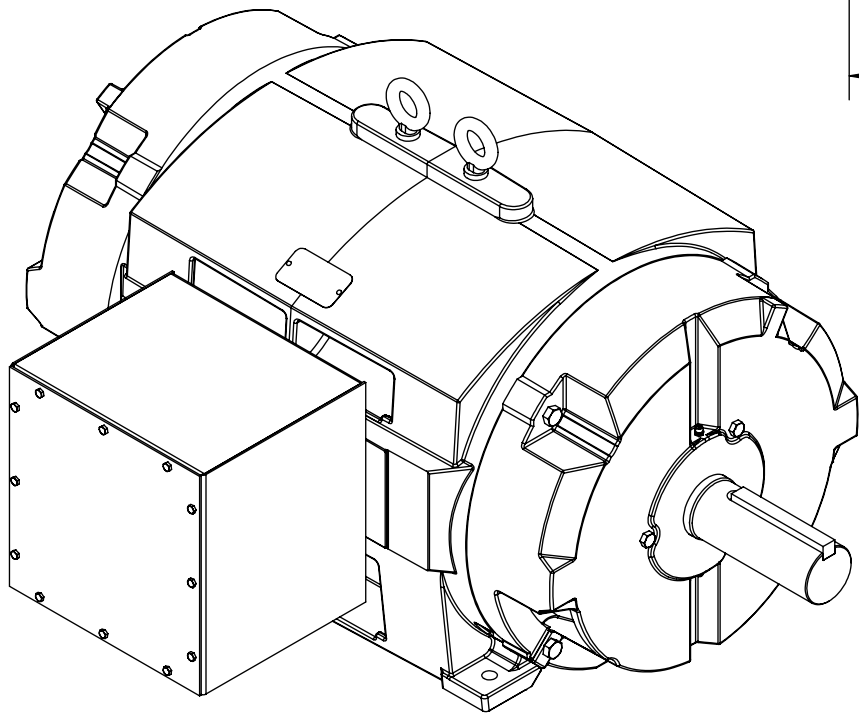
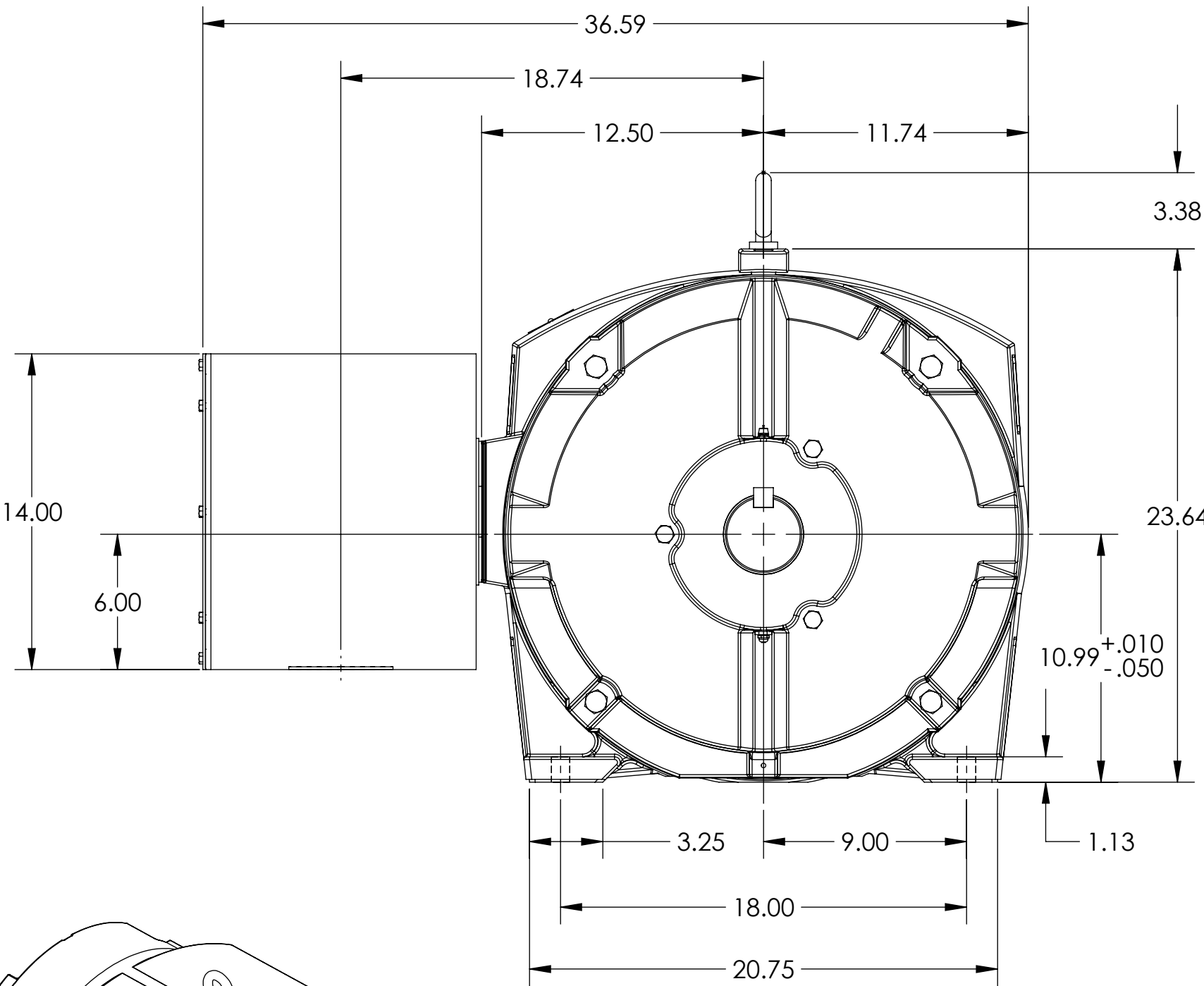
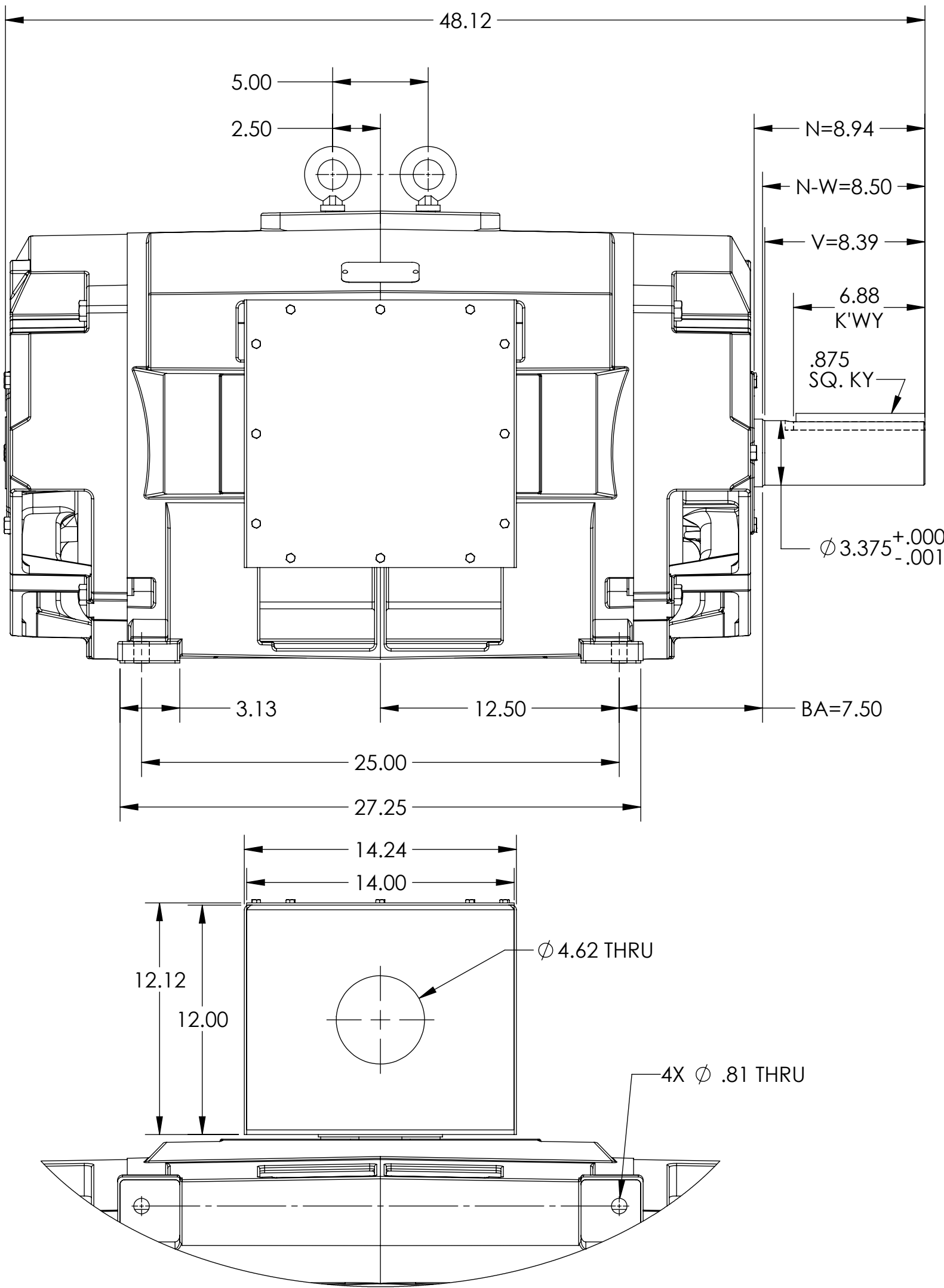
DUTY MASTER ALTERNATING CURRENT MOTORS  
SQUIRREL-CAGE INDUCTION

ENCLOSURE: PROTECTED; OPEN DRIP PROOF  
MOUNTING: FOOT, F-1 SIDE

FRAME E449T  
14X14X12 FABRICATED STEEL C/BOX

COOLING: SELF-VENTILATED

604989-505



MOTOR WRIGHT: 2100 LBS  
\*MAY VARY BY 15% DEPENDING ON RATING

DIMENSIONS ARE IN INCHES

CUSTOMER IS RESPONSIBLE FOR DETERMINING THAT MOTOR PERFORMANCE IS SUITABLE IN THE APPLICATION.

IF MOUNTING CLEARANCE DETAILS ARE REQUIRED, CONSULT FACTORY.

MAXIMUM PERMISSIBLE SHAFT RUNOUT WHEN MEASURED AT END OF  
STANDARD SHAFT EXTENSION IS .003" T.I.R.

SHEET NUMBER  
1 OF 1

505-686709

REV. DESC: UPDATE MODEL TO ADD EXTERNAL HARDWARE PER PROD MGM			
REV: B	VERSION: 02	REVISED: 07:48:44 07/14/2022	TDR: 000001193529
MODEL NO. 604989-505			
BY: USBUFRA			

**BALDOR**

449T PROT F-1 FT - 14X14X12 FAB STL C/BOX

604989-505