

DUTY MASTER ALTERNATING CURRENT MOTORS  
SQUIRREL-CAGE INDUCTION

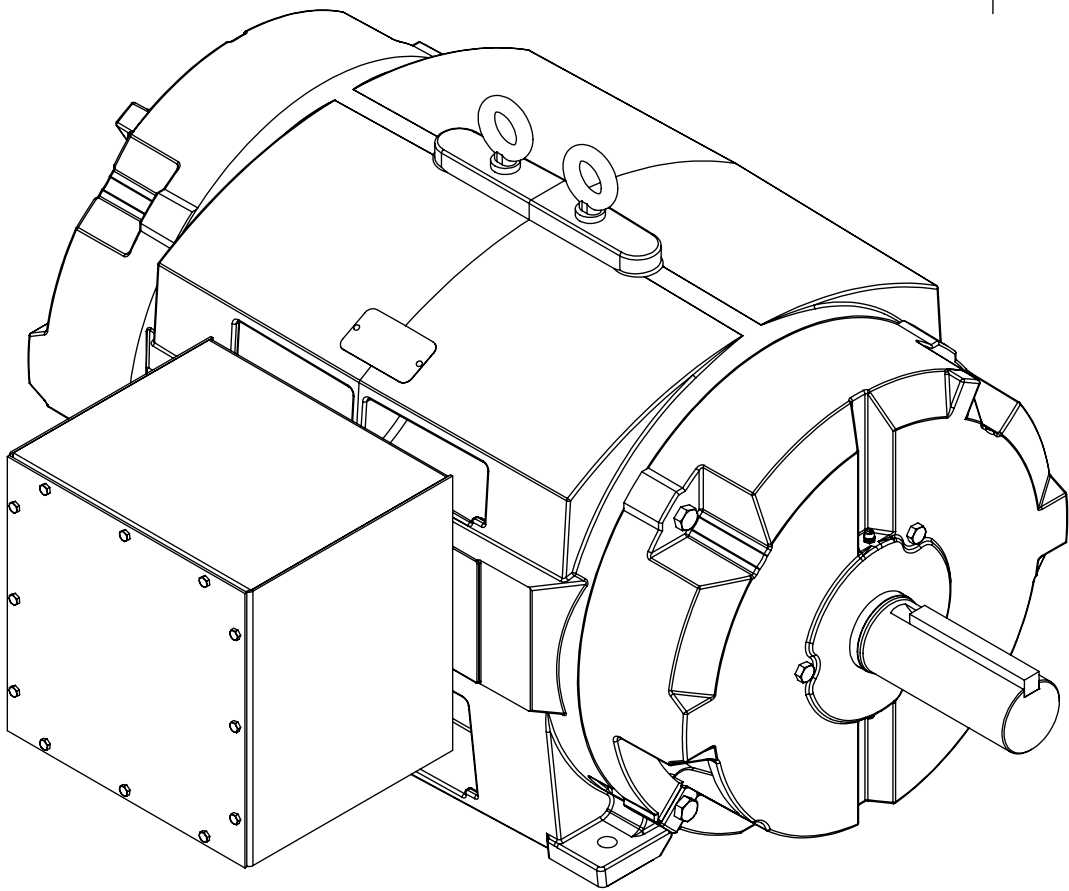
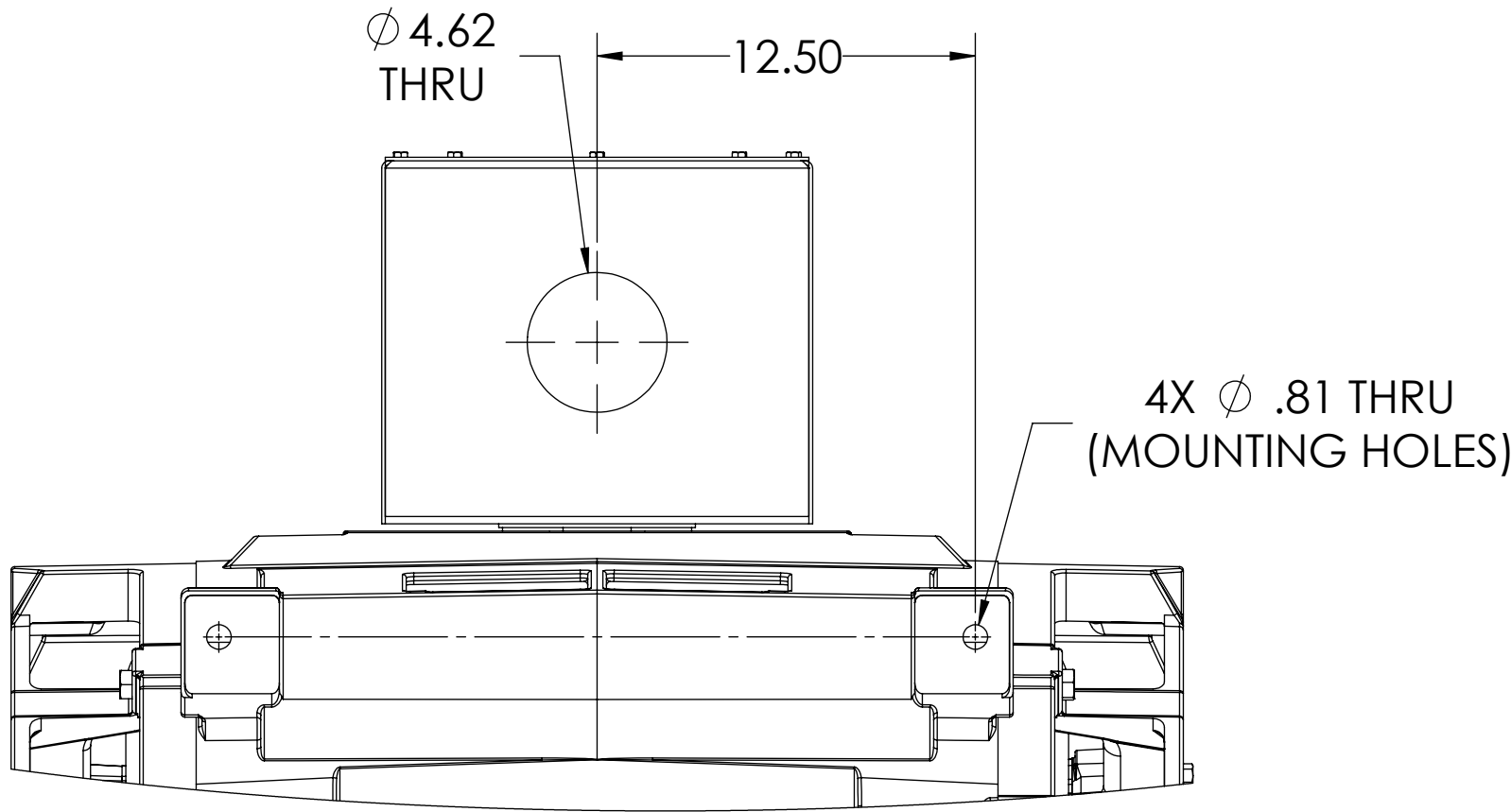
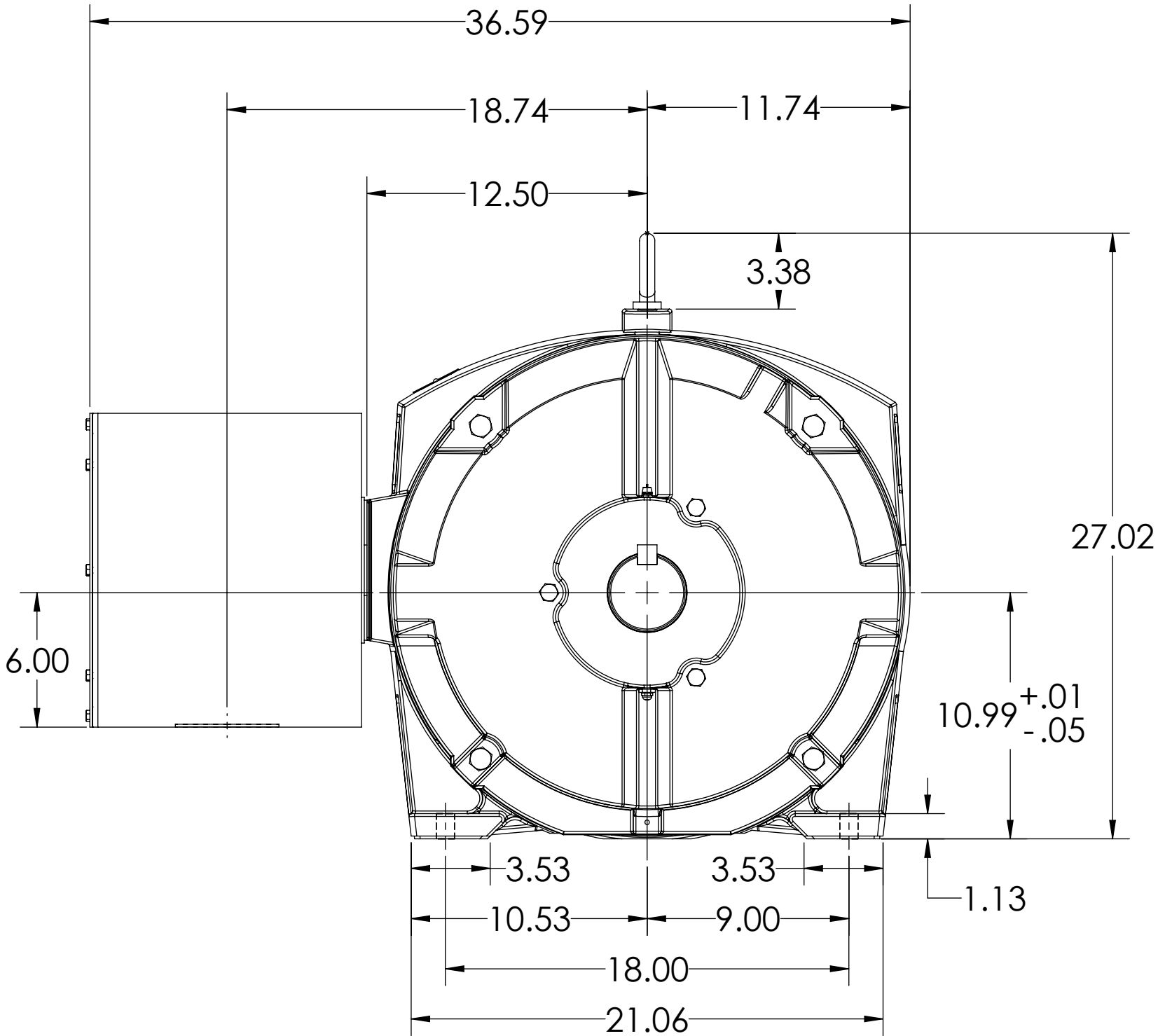
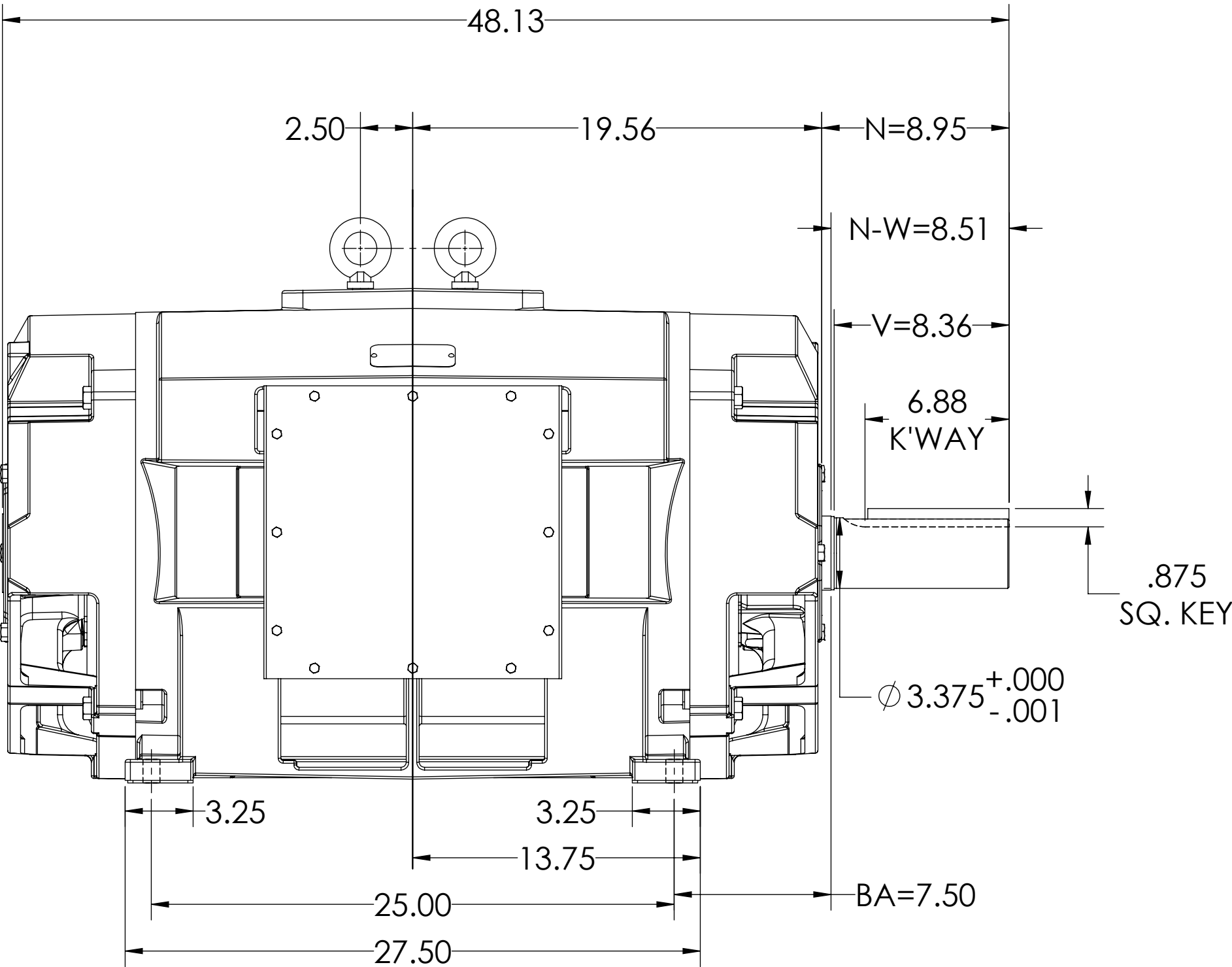
604989-635

ENCLOSURE: PROTECTED/ODP

MOUNTING: FOOT, F-1 SIDE

FRAME E449T

COOLING: SELF-VENTILATED



DIMENSIONS ARE IN INCHES.  
CONDUIT BOX ROTATABLE IN 90° INCREMENTS.  
MOTOR WEIGHT: 2100 LBS, MAY VARY BY 15% DEPENDING ON RATING..  
CUSTOMER IS RESPONSIBLE FOR DETERMINING THAT MOTOR PERFORMANCE IS SUITABLE IN THE APPLICATION.

SHEET NUMBER  
1 OF 1

IF MOUNTING CLEARANCE DETAILS ARE REQUIRED, CONSULT FACTORY.

559-686709

MAX PERMISSIBLE SHAFT RUNOUT WHEN MEASURED AT END OF STANDARD SHAFT EXTENSION IS .003" T.I.R.

REV. DESC: UPDATE MODEL TO ADD EXTERNAL HARDWARE PER PROD MGM			
REV: A	VERSION: 01	REVISED: 07:43:45 07/14/2022	TDR: 000001193529
MODEL NO. 604989-635			
BY: USBUFRA			

**BALDOR**

E449T PROT/ODP F1 FOOT 14X14X12 STEEL BOX

604989-635