

# ABB BALDOR RELIANCE III

---

## Customer information packet

EM2568T-4

300HP/3550RPM/3PH/OPEN/NEMA 445TS

Class - None

Division - Not Applicable

**Specifications**

<b>Enclosure</b>	DP
<b>Frame</b>	445TS
<b>Frame Material</b>	Iron
<b>Frequency</b>	60.00 Hz
<b>Haz Area Class and Group</b>	None
<b>Haz Area Division</b>	Not Applicable
<b>Motor Letter Type</b>	Three Phase
<b>Output @ Frequency</b>	300.000 HP @ 60 HZ
<b>Phase</b>	3
<b>Synchronous Speed @ Frequency</b>	3600 RPM @ 60 HZ
<b>Voltage @ Frequency</b>	460.0 V @ 60 HZ
<b>Agency Approvals</b>	CURUSEEV
<b>Ambient Temperature</b>	40 °C
<b>Auxiliary Box</b>	NO AUXILLARY BOX
<b>Base Indicator</b>	Rigid
<b>Bearing Grease Type</b>	Polyrex EM (-20F +300F)
<b>Current @ Voltage</b>	339.000 A @ 460.0 V
<b>Design Code</b>	B
<b>Drip Cover</b>	No Drip Cover
<b>Duty Rating</b>	CONT
<b>Efficiency @ 100% Load</b>	95.4 %
<b>Feedback Device</b>	NO FEEDBACK
<b>Heater Indicator</b>	No Heater
<b>High Voltage Full Load Amps</b>	339.0 a
<b>Insulation Class</b>	F
<b>Inverter Code</b>	Inverter Ready
<b>IP Rating</b>	NONE
<b>KVA Code</b>	F
<b>Lifting Lugs</b>	Standard Lifting Lugs
<b>Motor Lead Quantity/Wire Size</b>	12 @ 4 AWG
<b>Motor Standards</b>	NEMA
<b>Motor Type</b>	A44068M

**Part Detail**

<b>Revision</b>	D
<b>Type</b>	AC
<b>Mech. spec.</b>	
<b>Base</b>	
<b>Status</b>	PRD/A
<b>Elec. spec.</b>	A44WG2770
<b>Layout</b>	611750-592
<b>Eff. date</b>	01-08-2025
<b>CD Diagram</b>	416820-008
<b>Poles</b>	02
<b>Leads</b>	6#4 (02 per group)
<b>Proprietary</b>	False
<b>Created date</b>	04-24-2015

<b>Mounting Arrangement</b>	F1
<b>Number of Poles</b>	2
<b>Overall Length</b>	35.88 IN
<b>Power Factor</b>	87
<b>Product Family</b>	General Industrial
<b>Pulley End Bearing Type</b>	Ball
<b>Pulley Face Code</b>	Standard
<b>Service Factor</b>	1.15
<b>Shaft Diameter</b>	2.375 IN
<b>Shaft Ground Indicator</b>	No Shaft Grounding
<b>Shaft Rotation</b>	Reversible
<b>Shaft Slinger Indicator</b>	No Slinger
<b>Speed</b>	3565 rpm
<b>Speed Code</b>	Single Speed
<b>Starting Method</b>	Wye Start - Delta Run
<b>Thermal Device - Bearing</b>	None
<b>Thermal Device - Winding</b>	None

**Nameplate**

<b>NP2496L</b>
MOBIL POLYREX EM

**NP2349L**

<b>SPEC NO.</b>	A44-7178-2770	<b>CAT.NO.</b>	EM2568T-4	<b>FRAME</b>	445TS
<b>HP</b>	300	<b>VOLTS</b>	460	<b>PHASE</b>	3
<b>RPM</b>	3565	<b>AMPS</b>	339	<b>DESIGN</b>	B
<b>DRIVE END BEARING</b>	65BC03J30X	<b>DUTY</b>	CONT	<b>TYPE</b>	P
<b>OPP D.E. BEARING</b>	65BC03J30X	<b>ENCL</b>	DP	<b>INSUL.CLASS</b>	F
<b>SER.NO.</b>		<b>POWER FACTOR</b>	87	<b>AMB</b>	40
				<b>SF</b>	1.15
				<b>MAX CORR KVAR</b>	45
				<b>NEMA-NOM-EFFICIENCY</b>	95.4
				<b>GUARANTEED EFFICIENCY</b>	94.5
				<b>NEMA NOM/CSA QUOTED EFF</b>	
				<b>MOTOR WEIGHT</b>	

CUSTOMER INFORMATION PACKET		EM2568T-4 - 300HP/3550RPM/3PH/OPEN/NEMA 445TS			
FRAME	HP	TYPE	PHASE/ HERTZ	RPM	VOLTS
445T	300	P	3/60	3565	460

AMPS	DUTY	AMB °C/ INSUL	S.F.	NEMA DESIGN	CODE LETTER	ENCLOSURE
339	CONT	40/F	1.15	B	F	ODP

E/S	ROTOR	TEST S.O.	TEST DATE	STATOR RES. @25 °C OHMS (BETWEEN LINES)	
498511	418143013HE	---	---	.0147	

**PERFORMANCE**


LOAD	HP	AMPERES	RPM	% POWER FACTOR	% EFFICIENCY
NO LOAD	0	94.3	3600	5.64	0
1/4	75.1	125	3591	60.7	92.3
2/4	150	186	3582	79.3	95.0
3/4	225	258	3573	85.4	95.5
4/4	300	339	3563	86.9	95.4
5/4	375	422	3553	87.6	95.0

**SPEED TORQUE**

	RPM	TORQUE % FULL LOAD	TORQUE LB.-FT.	AMPERES
LOCKED ROTOR	0	180	796	1908
PULL UP	1800	160	709	1677
BREAKDOWN	3430	231	1021	1061
FULL LOAD	3563	100	442	339

AMPERES SHOWN FOR 460 VOLT CONNECTION. IF OTHER CONNECTIONS ARE AVAILABLE, THE AMPERES WILL VARY INVERSELY WITH THE RATED VOLTAGE.

XE MOTOR - TYPICAL DATA - NEMA NOM. EFF. 95.4 PCT  
GUARANTEED MIN. EFF. 94.5 PCT

	DRAWN BY: <u>A. T. LONG</u>	AC MOTOR PERFORMANCE DATA	<b>A44WG2770-R001</b>
	CHECKED BY: <u>W. L. SMITH</u>		
	APPROVED BY: <u>D. M. BYRD</u>		DATE ISSUED 02/09/01
	DATE: <u>02/09/01</u>		

FRAME 445T

VOLTS 460

NEMA DESIGN B

TEST S.O. ---

HP 300

AMPS 339

CODE LETTER F

TEST DATE ---

TYPE P

DUTY CONT

ENCLOSURE ODP

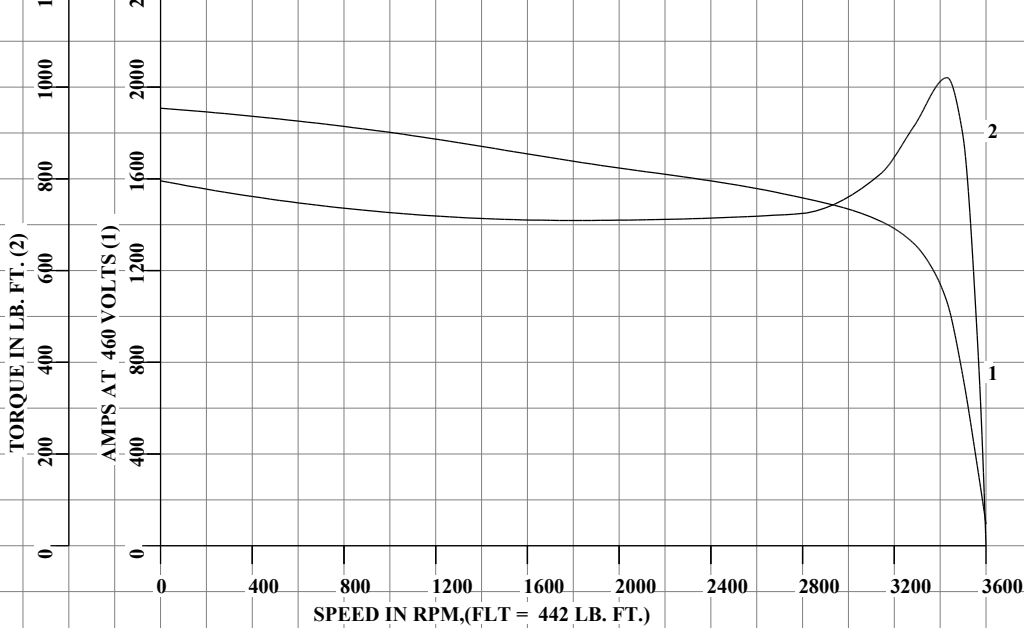
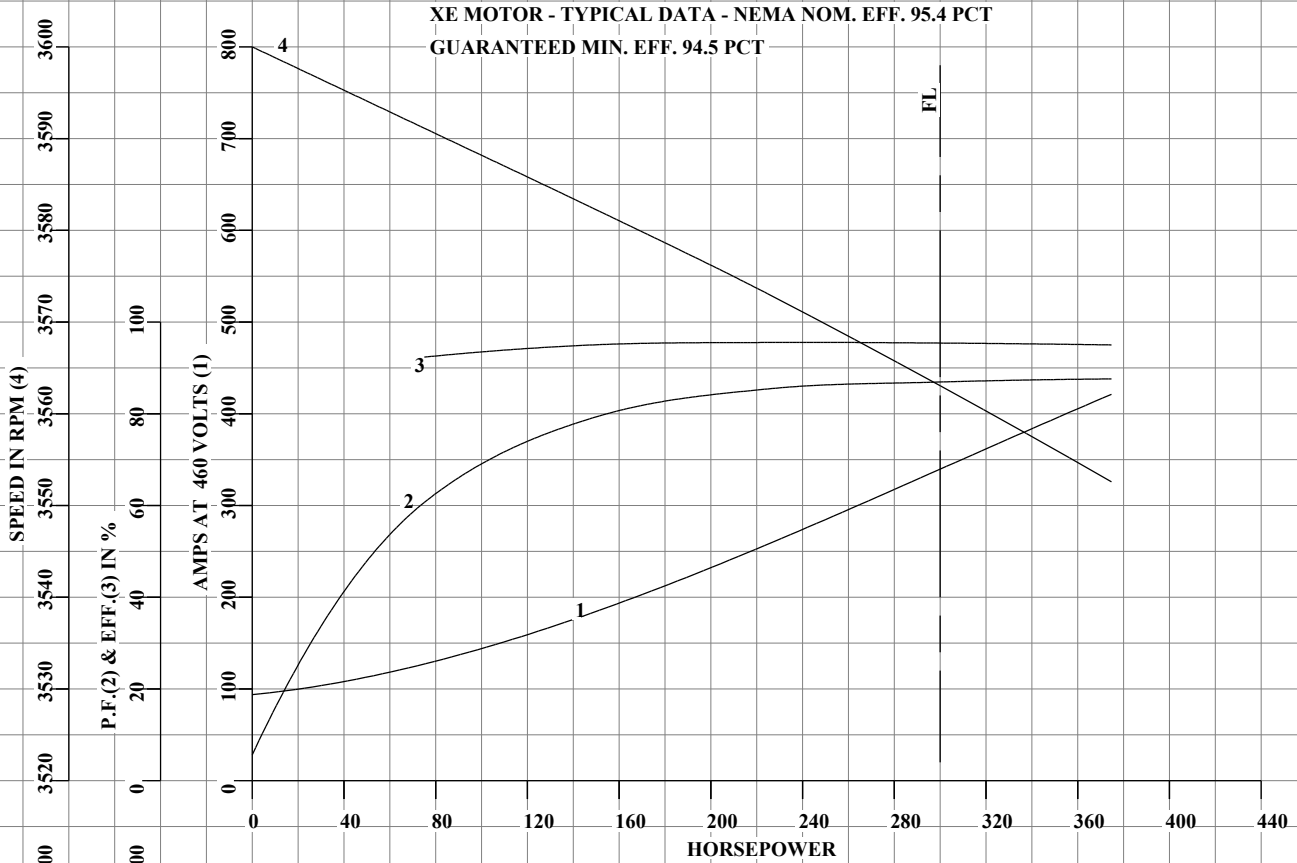
STATOR RES. @ 25°C .0147

PHASE / HERTZ 3/60

AMB °C / INSUL 40/F

E/S 498511

OHMS (BETWEEN LINES)



AMPERES SHOWN FOR 460 VOLT CONNECTION, IF OTHER VOLTAGE CONNECTIONS ARE AVAILABLE, THE AMPERES WILL VARY INVERSELY WITH THE RATED VOLTAGE.

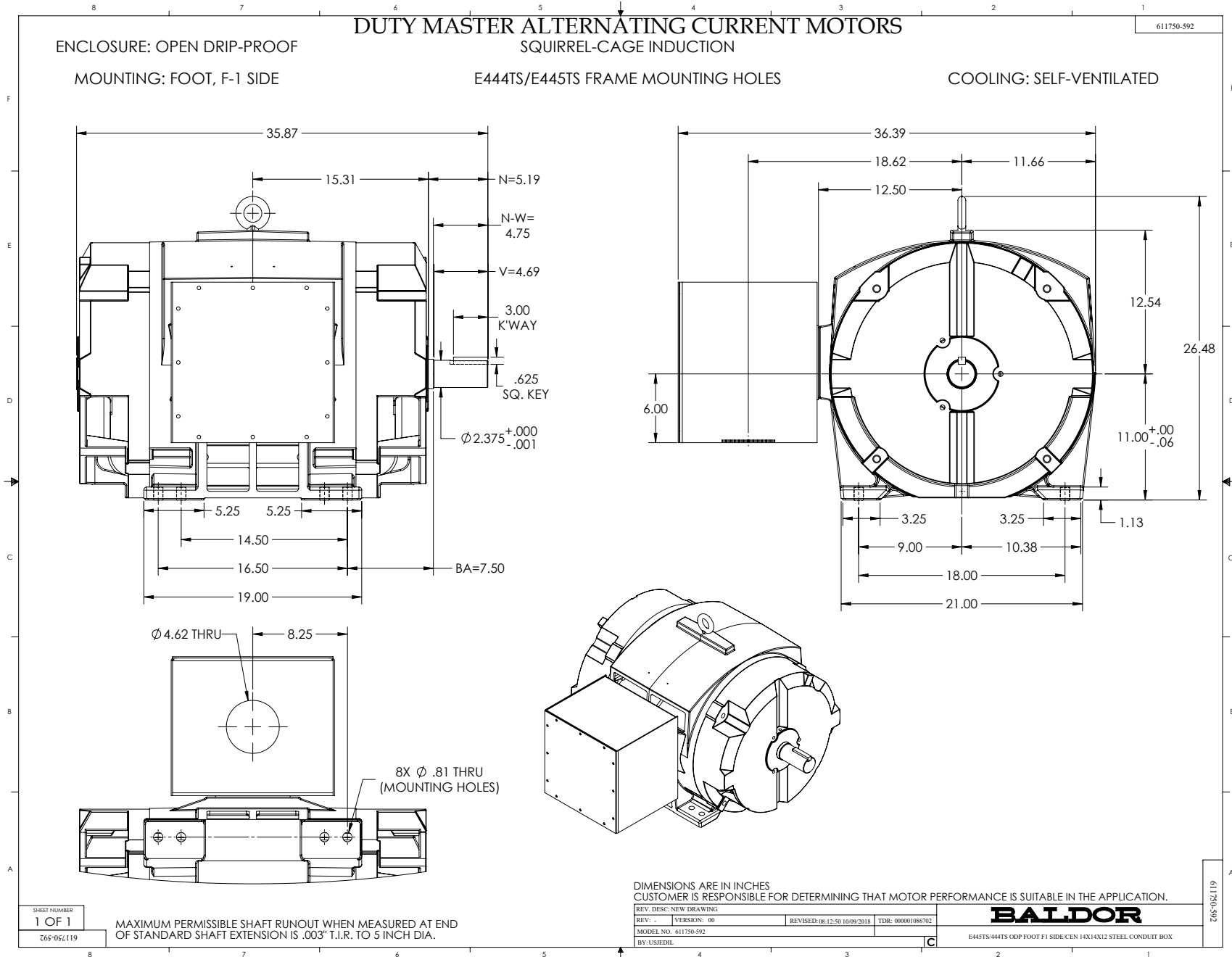


DRAWN BY: A. T. LONG  
 CHECKED BY: W. L. SMITH  
 APPROVED BY: D. M. BYRD  
 DATE: 02/09/01

**AC MOTOR  
PERFORMANCE  
DATA**

**A44WG2770-R001**

ISSUE DATE 02/09/01

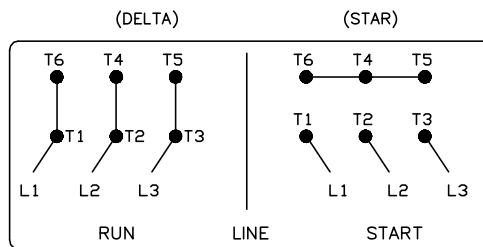
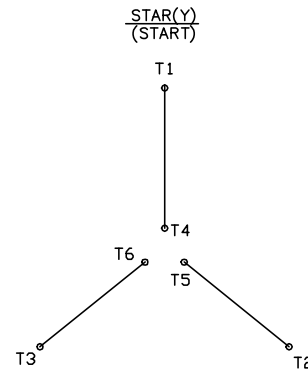
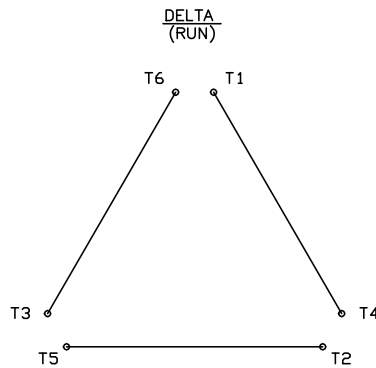


416820-008

# A-C MOTOR CONNECTION DIAGRAM

STANDARD 6 LEAD

Y START - DELTA RUN



< N. P. 1767-DC >

REV. DESC: ADDED T4 TO Y CONNECT DIAGRAM		
REV. LTR: D	VERSION: 04	TDR: 00000847713
FILE: \RAG\00001\808	REVISED: 10: 41: 26 04/08/2014	BY: RAGJSS1
MTL: -	© □	

CONNECT DIAGRAM STD 6 LEAD Y START DELTA RUN

SH 1 of 1

416820-008