

ABB BALDOR RELIANCE III

Customer information packet

EM2565T-4

250HP, 3565RPM, 3PH, 60HZ, 445TS, DP, F1

Class - None

Division - Not Applicable

Specifications

Enclosure	DP
Frame	445TS
Frame Material	Iron
Frequency	60.00 Hz
Haz Area Class and Group	None
Haz Area Division	Not Applicable
Motor Letter Type	Three Phase
Output @ Frequency	250.000 HP @ 60 HZ
Phase	3
Synchronous Speed @ Frequency	3600 RPM @ 60 HZ
Voltage @ Frequency	460.0 V @ 60 HZ
Agency Approvals	CURUSEEV
Ambient Temperature	40 °C
Auxiliary Box	NO AUXILLARY BOX
Base Indicator	Rigid
Bearing Grease Type	Polyrex EM (-20F +300F)
Current @ Voltage	274.000 A @ 460.0 V
Design Code	B
Drip Cover	No Drip Cover
Duty Rating	CONT
Efficiency @ 100% Load	95.4 %
Feedback Device	NO FEEDBACK
Heater Indicator	No Heater
High Voltage Full Load Amps	274.0 a
Insulation Class	F
Inverter Code	Inverter Ready
IP Rating	NONE
KVA Code	F
Lifting Lugs	Standard Lifting Lugs
Motor Lead Quantity/Wire Size	6 @ 1/0 AWG
Motor Standards	NEMA
Motor Type	A44068M

Part Detail

Revision	C
Type	AC
Mech. spec.	
Base	
Status	PRD/A
Elec. spec.	A44WG1392
Layout	617428-044
Eff. date	09-25-2025
CD Diagram	416820-008
Poles	02
Leads	6#1/0
Proprietary	False
Created date	04-24-2015

Mounting Arrangement	F1
Number of Poles	2
Overall Length	35.88 IN
Power Factor	89
Product Family	General Industrial
Pulley End Bearing Type	Ball
Pulley Face Code	Standard
Service Factor	1.15
Shaft Diameter	2.375 IN
Shaft Ground Indicator	No Shaft Grounding
Shaft Rotation	Reversible
Shaft Slinger Indicator	No Slinger
Speed	3565 rpm
Speed Code	Single Speed
Starting Method	Wye Start - Delta Run
Thermal Device - Bearing	None
Thermal Device - Winding	None

Nameplate

NP2496L
MOBIL POLYREX EM

NP2349L

SPEC NO.	A44-7177-1392	CAT.NO.	EM2565T-4	FRAME	445TS
HP	250	VOLTS	460	PHASE	3
RPM	3565	AMPS	274	DESIGN	B
DRIVE END BEARING	65BC03J30X	DUTY	CONT	TYPE	P
OPP D.E. BEARING	65BC03J30X	ENCL	DP	INSUL.CLASS	F
SER.NO.		POWER FACTOR	89	AMB	40
				SF	1.15
				CODE	F
				NEMA-NOM-EFFICIENCY	95.4
				MAX CORR KVAR	30
				GUARANTEED EFFICIENCY	94.5
				NEMA NOM/CSA QUOTED EFF	
				MOTOR WEIGHT	

REL. S.O.	FRAME	HP	TYPE	PHASE/HERTZ	RPM	VOLTS
	445TSC	250	P	3/60	3565	460

AMPS	DUTY	AMB °C/ INSUL.	S.F.	NEMA DESIGN	CODE LETTER	ENCL.
274	CONT	40/F	1.15	B	F	PROT

E/S	ROTOR	TEST S.O.	TEST DATE	STATOR RES. @25 °C OHMS (BETWEEN LINES)
498702	418143-14-ME	---	---	.0218

PERFORMANCE

LOAD	HP	AMPERES	RPM	% POWER FACTOR	% EFFICIENCY
NO LOAD	0	70.1	3600	4.36	0
1/4	62.6	95.0	3592	65.4	94.4
2/4	125	145	3584	83.8	96.0
3/4	187	207	3576	88.2	96.1
4/4	250	274	3567	89.3	95.7
5/4	312	342	3558	89.8	95.1

SPEED TORQUE

	RPM	TORQUE % FULL LOAD	TORQUE LB.-FT.	AMPERES
LOCKED ROTOR	0	204	751	1752
PULL UP	1800	181	668	1560
BREAKDOWN	3427	246	906	1106
FULL LOAD	3567	100	368	274

AMPERES SHOWN FOR 460. VOLT CONNECTION. IF OTHER VOLTAGE CONNECTIONS ARE AVAILABLE, THE AMPERES WILL VARY INVERSELY WITH THE RATED VOLTAGE

REMARKS: TYPICAL DATA



DR. BY J.J.HARRISON
 CK. BY W.L.SMITH
 APP. BY W.L.SMITH
 DATE 09/24/10

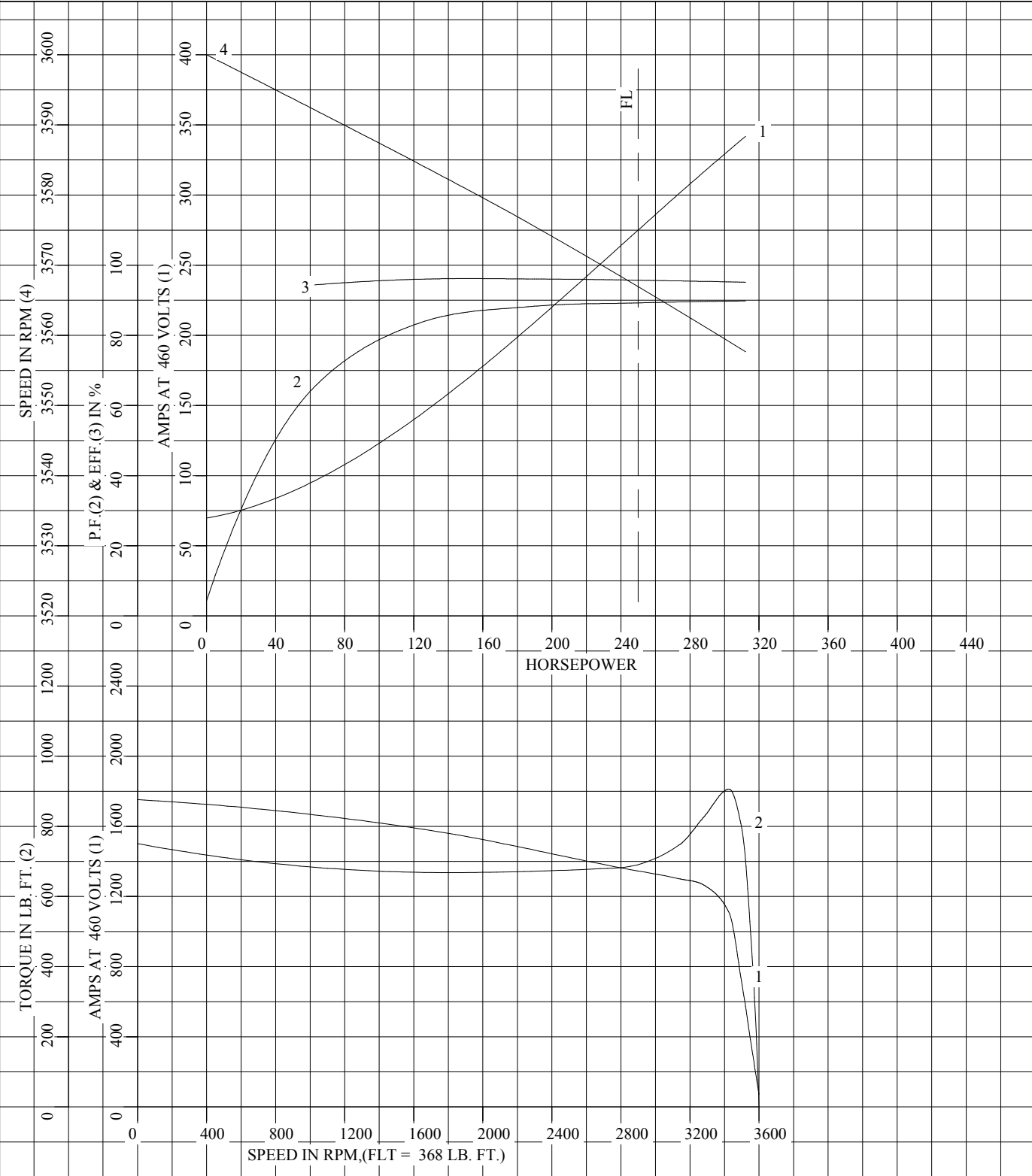
**A-C MOTOR
 PERFORMANCE A44WG1392-R001
 DATA** ISSUE DATE 12/18/10

FRAME 445TSC
HP 250
TYPE P
PHASE/HERTZ 3/60

RPM 3565
VOLTS 460
AMPS 274
DUTY CONT
AMB °C/INSUL 40/F

NEMA DESIGN B
CODE LETTER F
ENCLOSURE PROT
E/S 498702

TEST S.O. TYPICAL DATA
TEST DATE ---
STATOR RES. @ 25 °C .0218
OHMS (BETWEEN LINES)



AMPERES SHOWN FOR 460 VOLT CONNECTION, IF OTHER VOLTAGE CONNECTIONS ARE AVAILABLE, THE AMPERES WILL VARY INVERSELY WITH THE RATED VOLTAGE.



DR. BY J.J.HARRISON
CK. BY W.L.SMITH
APP. BY W.L.SMITH
DATE 09/24/10

**A-C MOTOR
PERFORMANCE CURVES** A44WG1392-R001
ISSUE DATE 12/18/10

REL. S.O.

RPM 3565

S.F. 1.15

ROTOR 418143-14-ME

FRAME 445TSC

VOLTS 460

NEMA DESIGN B

TEST S.O. TYPICAL DATA

HP 250

AMPS 274

CODE LETTER F

TEST DATE ---

TYPE P

DUTY CONT

ENCLOSURE PROT

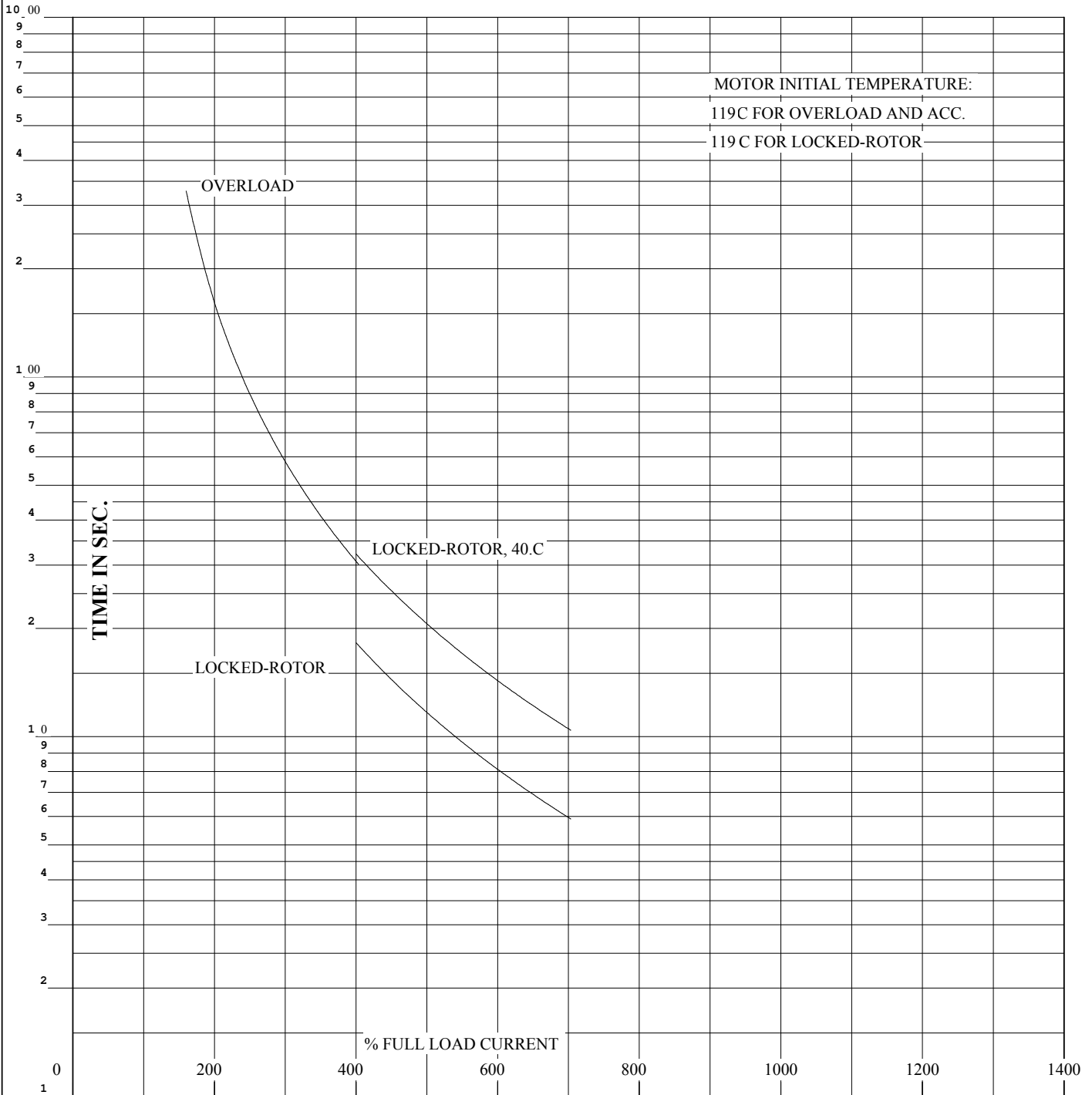
STATOR RES. @ 25 °C .0218

PHASE/HERTZ 3/60

AMB °C/INSUL 40/F

E/S 498702

OHMS (BETWEEN LINES)



THERMAL LIMIT CURVE

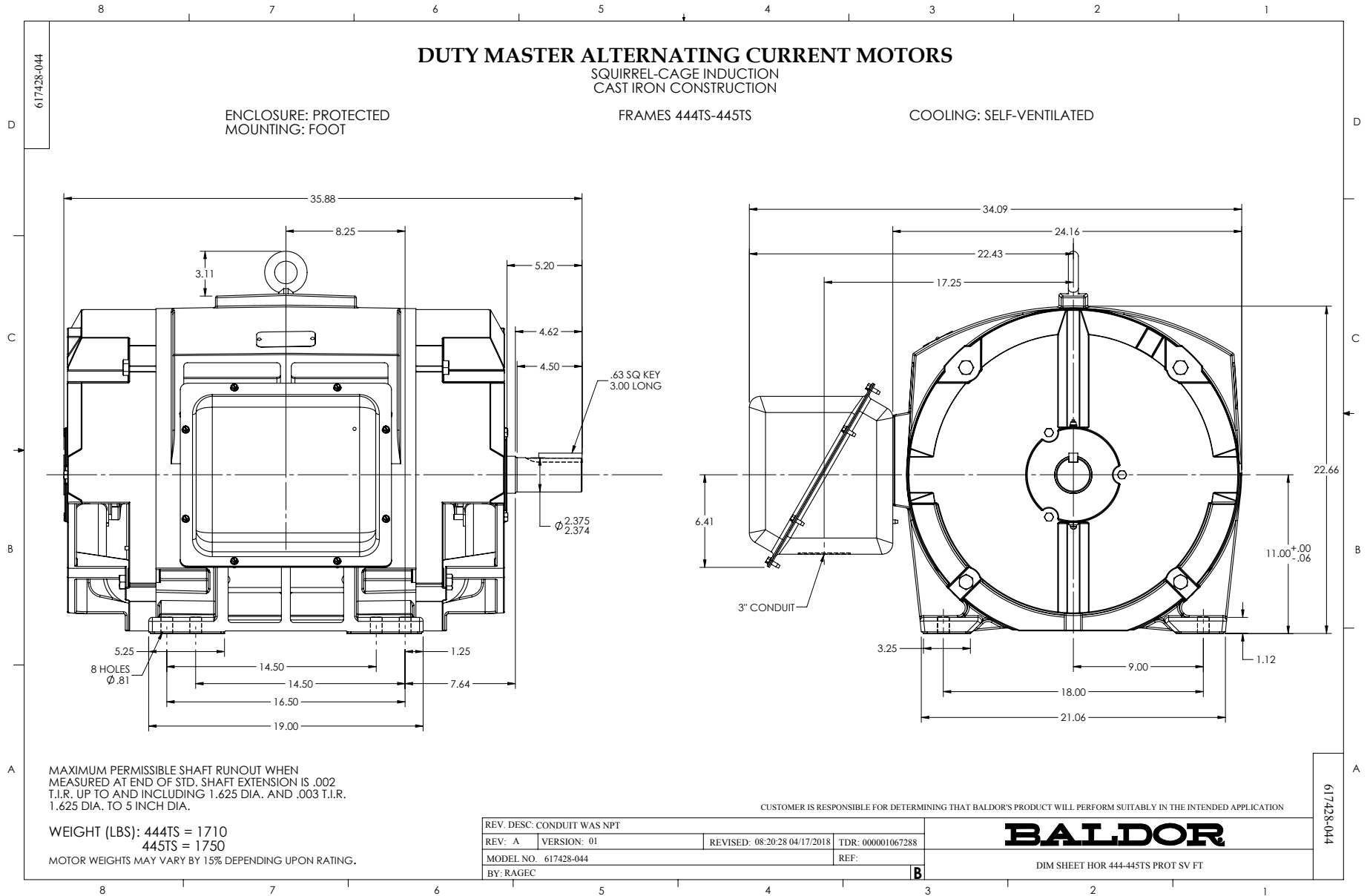
REMARKS:

AMPERES SHOWN FOR 460 VOLT CONNECTION, IF OTHER VOLTAGE CONNECTIONS ARE AVAILABLE, THE AMPERES WILL VARY INVERSELY WITH THE RATED VOLTAGE.



DR. BY J.J.HARRISON
CK. BY W.L.SMITH
APP. BY W.L.SMITH
DATE 09/24/10

**A-C MOTOR
PERFORMANCE A44WG1392-R001
CURVES** ISSUE DATE 12/18/10

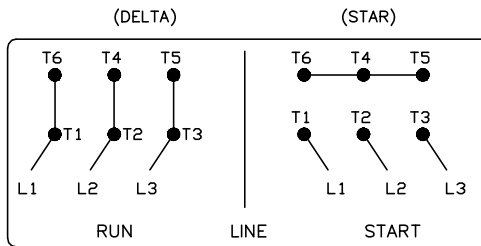
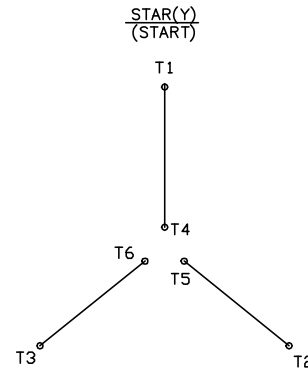
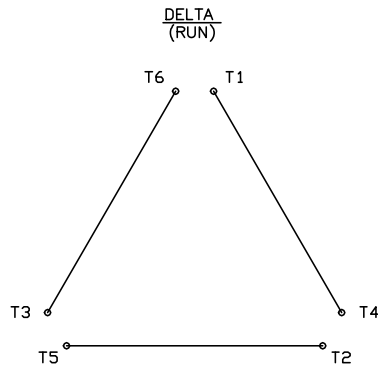


416820-008

A-C MOTOR CONNECTION DIAGRAM

STANDARD 6 LEAD

Y START - DELTA RUN



< N. P. 1767-DC >

REV. DESC: ADDED T4 TO Y CONNECT DIAGRAM

REV. LTR: D

VERSION: 04

TDR: 00000847713

FILE: \RAG\00001\808

REVISED: 10: 41: 26 04/08/2014

BY: RAGJSS1

MTL: -



BALDOR

CONNECT DIAGRAM STD 6 LEAD Y START DELTA RUN

SH 1 of 1

416820-008