

ABB BALDOR RELIANCE III

Customer information packet

EM2562T-4

200HP, 3565RPM, 3PH, 60HZ, 444TS, A44056M, DP

Class - None

Division - Not Applicable

Specifications

Enclosure	DP
Frame	444TS
Frame Material	Iron
Frequency	60.00 Hz
Haz Area Class and Group	None
Haz Area Division	Not Applicable
Motor Letter Type	Three Phase
Phase	3
Agency Approvals	CURUSEEV
Auxiliary Box	NO AUXILLARY BOX
Base Indicator	Rigid
Bearing Grease Type	Polyrex EM (-20F +300F)
Design Code	B
Drip Cover	No Drip Cover
Duty Rating	CONT
Efficiency @ 100% Load	95.6 %
Feedback Device	NO FEEDBACK
Heater Indicator	No Heater
Insulation Class	F
Inverter Code	Inverter Ready
KVA Code	F
Lifting Lugs	No Lifting Lugs
Motor Standards	NEMA
Motor Type	A44056M
Mounting Arrangement	F1
Number of Poles	2
Overall Length	35.88 IN
Power Factor	88
Pulley End Bearing Type	Ball
Pulley Face Code	Standard
Service Factor	1.15
Shaft Diameter	2.375 IN

Part Detail

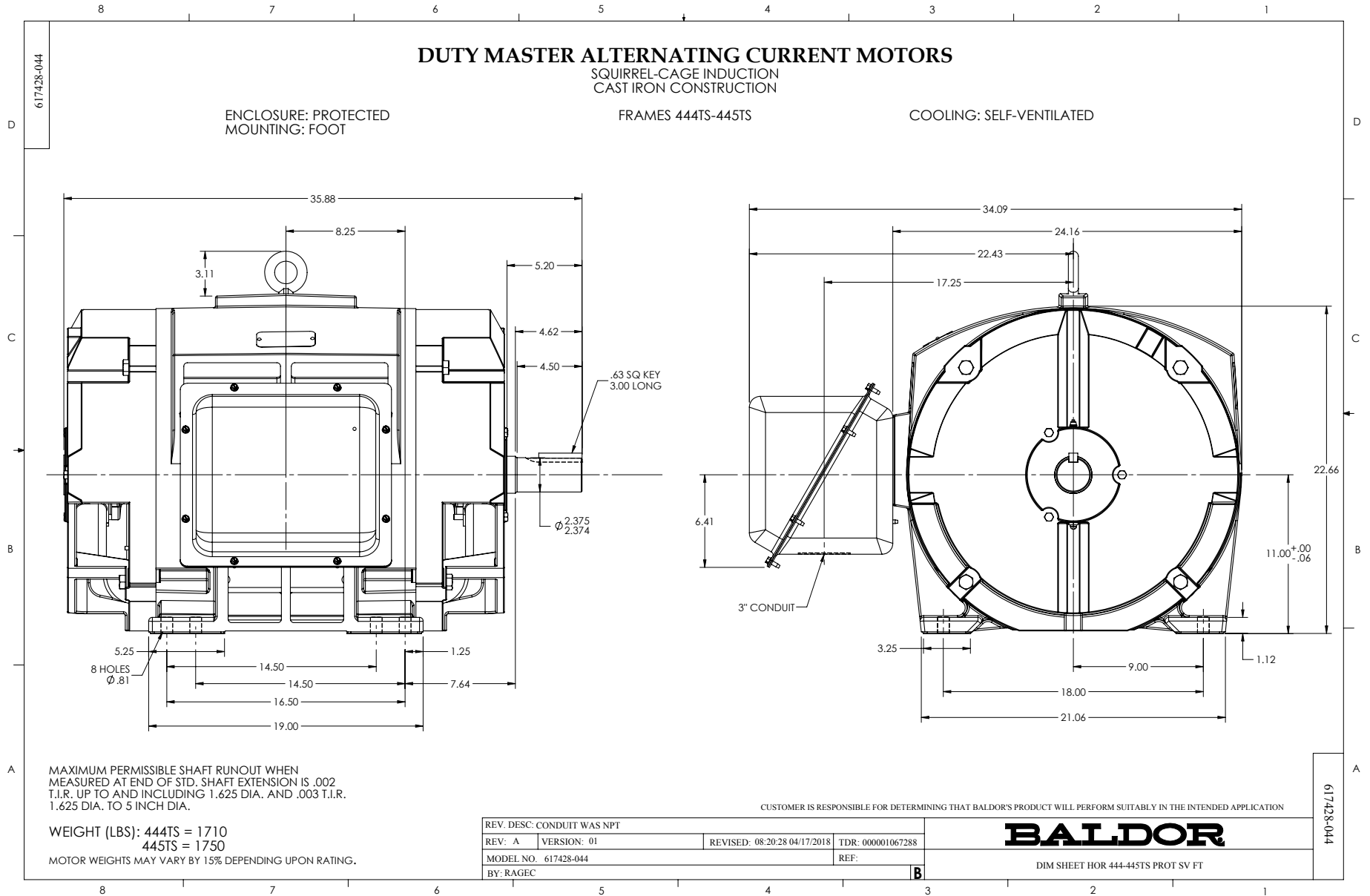
Revision	-
Type	AC
Mech. spec.	
Base	
Status	PRD/A
Elec. spec.	M-A44WG-1511
Layout	617428-044
Eff. date	02-17-2026
CD Diagram	416820-008
Poles	02
Leads	6#1,0#
Proprietary	False
Created date	01-20-2026

Shaft Ground Indicator	No Shaft Grounding
Shaft Rotation	Reversible
Shaft Slinger Indicator	No Slinger
Speed Code	Single Speed
Starting Method	Wye Start - Delta Run
Thermal Device - Bearing	None
Thermal Device - Winding	None

Nameplate

NP2377L

CAT.NO.	EM2562T-4	SPEC NO.	A44-0001-1511						
HP	200	AMPS	221	VOLTS	460	DESIGN	B		
FRAME	444TS	RPM	3565	HZ	60	AMB	40	SF	1.15
DRIVE END BEARING	65BC03J30X	PHASE	3	DUTY	CONT	INSUL.CLASS	F		
OPP D.E. BEARING	65BC03J30X	TYPE	P	ENCL	DP	CODE	F		
SER.NO.		POWER FACTOR	88.5	NEMA-NOM-EFFICIENCY	95.6				
		MAX CORR KVAR	30.0	GUARANTEED EFFICIENCY	95.0				
		NEMA NOM/CSA QUOTED EFF							
		MOTOR WEIGHT							

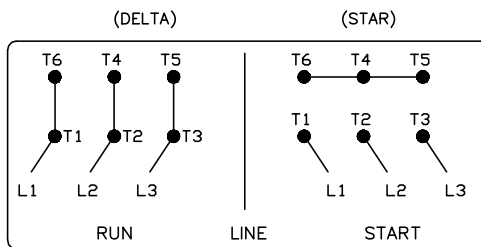
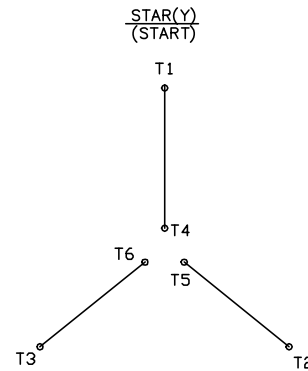
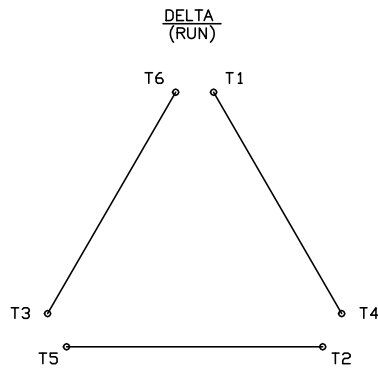


416820-008

A-C MOTOR CONNECTION DIAGRAM

STANDARD 6 LEAD

Y START - DELTA RUN



< N. P. 1767-DC >

REV. DESC: ADDED T4 TO Y CONNECT DIAGRAM

REV. LTR: D

VERSION: 04

TDR: 00000847713

FILE: \RAG\00001\808

REVISED: 10: 41: 26 04/08/2014

BY: RAGJSS1

MTL: -



BALDOR

CONNECT DIAGRAM STD 6 LEAD Y START DELTA RUN

SH 1 of 1

416820-008