

ABB BALDOR RELIANCE III

Customer information packet

EM2559T-4CI

125HP, 1785RPM, 3PH, 60HZ, 405T, ODP, FOOT,

Class - None

Division - Not Applicable

Specifications

Enclosure	DP
Frame	405T
Frame Material	Iron
Frequency	60.00 Hz
Haz Area Class and Group	None
Haz Area Division	Not Applicable
Motor Letter Type	Three Phase
Output @ Frequency	125.000 HP @ 60 HZ
Phase	3
Synchronous Speed @ Frequency	1800 RPM @ 60 HZ
Voltage @ Frequency	460.0 V @ 60 HZ
Agency Approvals	CCSA US CCSAUSEEV CSA EEV CURUSEEV
Ambient Temperature	40 °C
Auxiliary Box	NO AUXILLARY BOX
Base Indicator	Rigid
Bearing Grease Type	Polyrex EM (-20F +300F)
Current @ Voltage	141.000 A @ 460.0 V
Design Code	B
Drip Cover	No Drip Cover
Duty Rating	CONT
Efficiency @ 100% Load	95.4 %
Feedback Device	NO FEEDBACK
Heater Indicator	No Heater
High Voltage Full Load Amps	141.0 a
Insulation Class	F
Inverter Code	Inverter Ready
KVA Code	G
Lifting Lugs	No Lifting Lugs
Motor Lead Quantity/Wire Size	6 @ 4 AWG

Part Detail


Revision	L
Type	AC
Mech. spec.	
Base	
Status	PRD/A
Elec. spec.	A40WG0248
Layout	617428-119
Eff. date	09-04-2024
CD Diagram	416820-036
Poles	04
Leads	3#4 (02 per group)
Proprietary	False
Created date	10-19-2010

Motor Standards	NEMA
Motor Type	A40064M
Mounting Arrangement	F1
Number of Poles	4
Power Factor	87
Pulley End Bearing Type	Ball
Pulley Face Code	C-Face
Service Factor	1.15
Shaft Diameter	2.875 IN
Shaft Ground Indicator	No Shaft Grounding
Shaft Rotation	Reversible
Shaft Slinger Indicator	No Slinger
Speed	1785 rpm
Speed Code	Single Speed
Starting Method	Direct on line
Thermal Device - Bearing	None
Thermal Device - Winding	None

Nameplate

NP2349L

SPEC NO.	P40G298	CAT.NO.	EM2559T-4CI	FRAME	405T
HP	125	VOLTS	460	PHASE	3
RPM	1785	AMPS	141	DESIGN	B
DRIVE END BEARING	80BC03J30X	DUTY	CONT	TYPE	P
OPP D.E. BEARING	80BC03J30X	ENCL	DP	INSUL.CLASS	F
SER.NO.		CODE	G	HZ	60
		POWER FACTOR	87	AMB	40
				SF	1.15
				NEMA-NOM-EFFICIENCY	95.4
				MAX CORR KVAR	25.0
				GUARANTEED EFFICIENCY	95.0
				NEMA NOM/CSA QUOTED EFF	
				MOTOR WEIGHT	

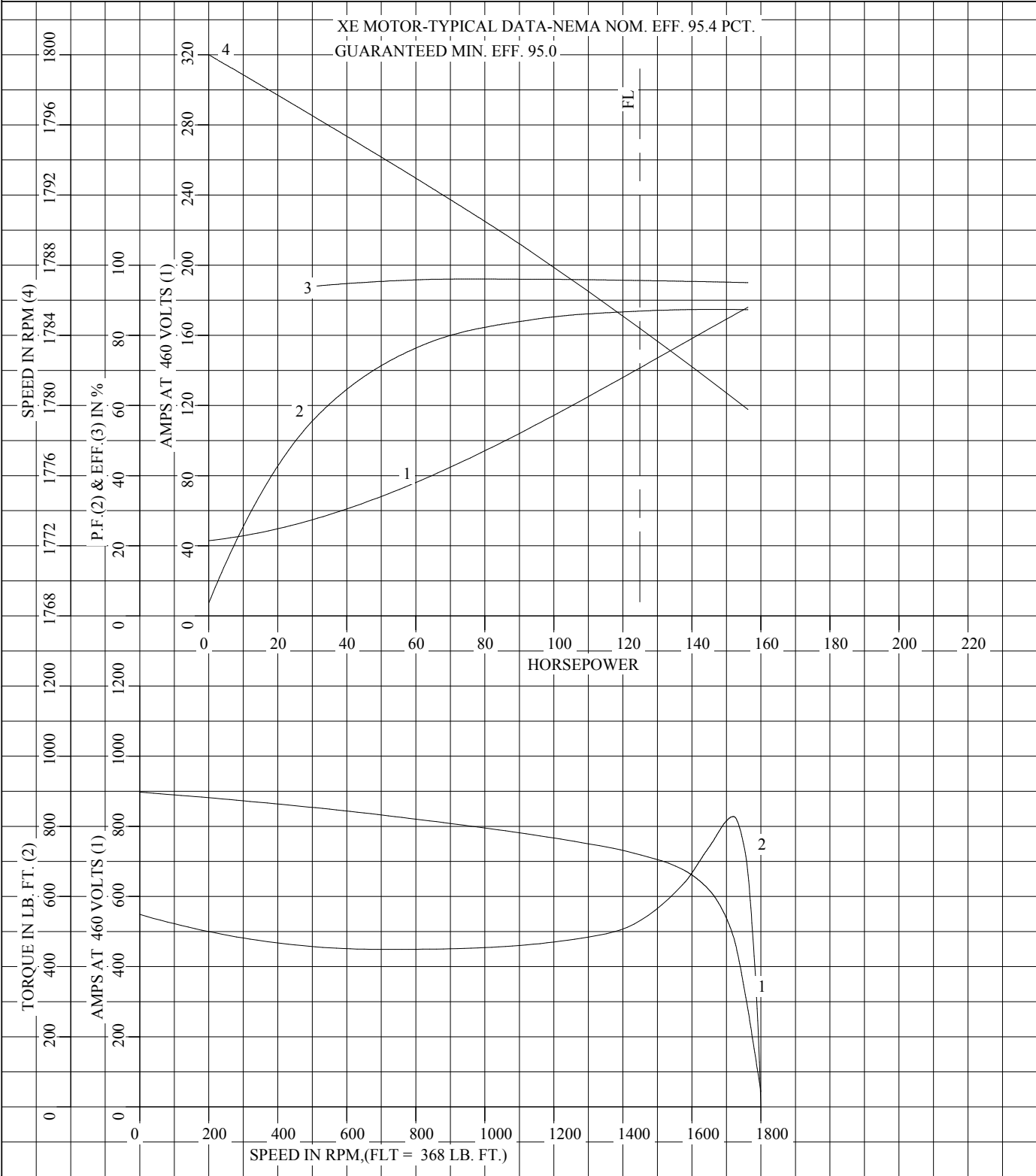
REL. S.O.	FRAME	HP	TYPE	PHASE/ HERTZ	RPM	VOLTS
	405T	125	P	3/60	1785	460
AMPS	DUTY	AMB °C/ INSUL.	S.F.	NEMA DESIGN	CODE LETTER	ENCL.
141	CONT	40/B	1.15	B	G	PROT
E/S	ROTOR	TEST S.O.	TEST DATE	STATOR RES. @25 °C OHMS (BETWEEN LINES)		
496084	418142-31-ME	---	---	.0436		
PERFORMANCE						
LOAD	HP	AMPERES	RPM	% POWER FACTOR	% EFFICIENCY	
NO LOAD	0	43.2	1800	3.72	0	
1/4	31.3	54.8	1796	56.9	94.1	
2/4	62.5	78.8	1793	77.4	95.9	
3/4	93.7	108	1789	84.5	96.0	
4/4	125	141	1784	86.9	95.6	
5/4	156	176	1780	87.3	95.0	
SPEED TORQUE						
		RPM	TORQUE % FULL LOAD	TORQUE LB.-FT.	AMPERES	
LOCKED ROTOR		0	149	549	897	
PULL UP		700	122	449	832	
BREAKDOWN		1721	225	828	484	
FULL LOAD		1784	100	368	141	
<p>AMPERES SHOWN FOR 460. VOLT CONNECTION. IF OTHER VOLTAGE CONNECTIONS ARE AVAILABLE, THE AMPERES WILL VARY INVERSELY WITH THE RATED VOLTAGE</p> <p>REMARKS: TYPICAL DATA XE MOTOR-TYPICAL DATA-NEMA NOM. EFF. 95.4 PCT. GUARANTEED MIN. EFF. 95.0</p>						
		DR. BY P. B. GREENE CK. BY K. W. KANOUFF APP. BY K. W. KANOUFF DATE 09/15/89		A-C MOTOR PERFORMANCE A40WG0248-R002 DATA		
		ISSUE DATE 12/16/10				

FRAME 405T
HP 125
TYPE P
PHASE/HERTZ 3/60

RPM 1785
VOLTS 460
AMPS 141
DUTY CONT
AMB °C/INSUL 40/B

NEMA DESIGN B
CODE LETTER G
ENCLOSURE PROT
E/S 496084

TEST S.O. TYPICAL DATA
TEST DATE ---
STATOR RES. @ 25 °C .0436
OHMS (BETWEEN LINES)



AMPERES SHOWN FOR 460 VOLT CONNECTION, IF OTHER VOLTAGE CONNECTIONS ARE AVAILABLE, THE AMPERES WILL VARY INVERSELY WITH THE RATED VOLTAGE.



DR. BY P.B. GREENE
CK. BY K.W. KANOUFF
APP. BY K.W. KANOUFF
DATE 09/15/89

**A-C MOTOR
PERFORMANCE CURVES** A40WG0248-R002
ISSUE DATE 12/16/10

REL. S.O.

RPM 1785

S.F. 1.15

ROTOR 418142-31-ME

FRAME 405T

VOLTS 460

NEMA DESIGN B

TEST S.O. TYPICAL DATA

HP 125

AMPS 141

CODE LETTER G

TEST DATE ---

TYPE P

DUTY CONT

ENCLOSURE PROT

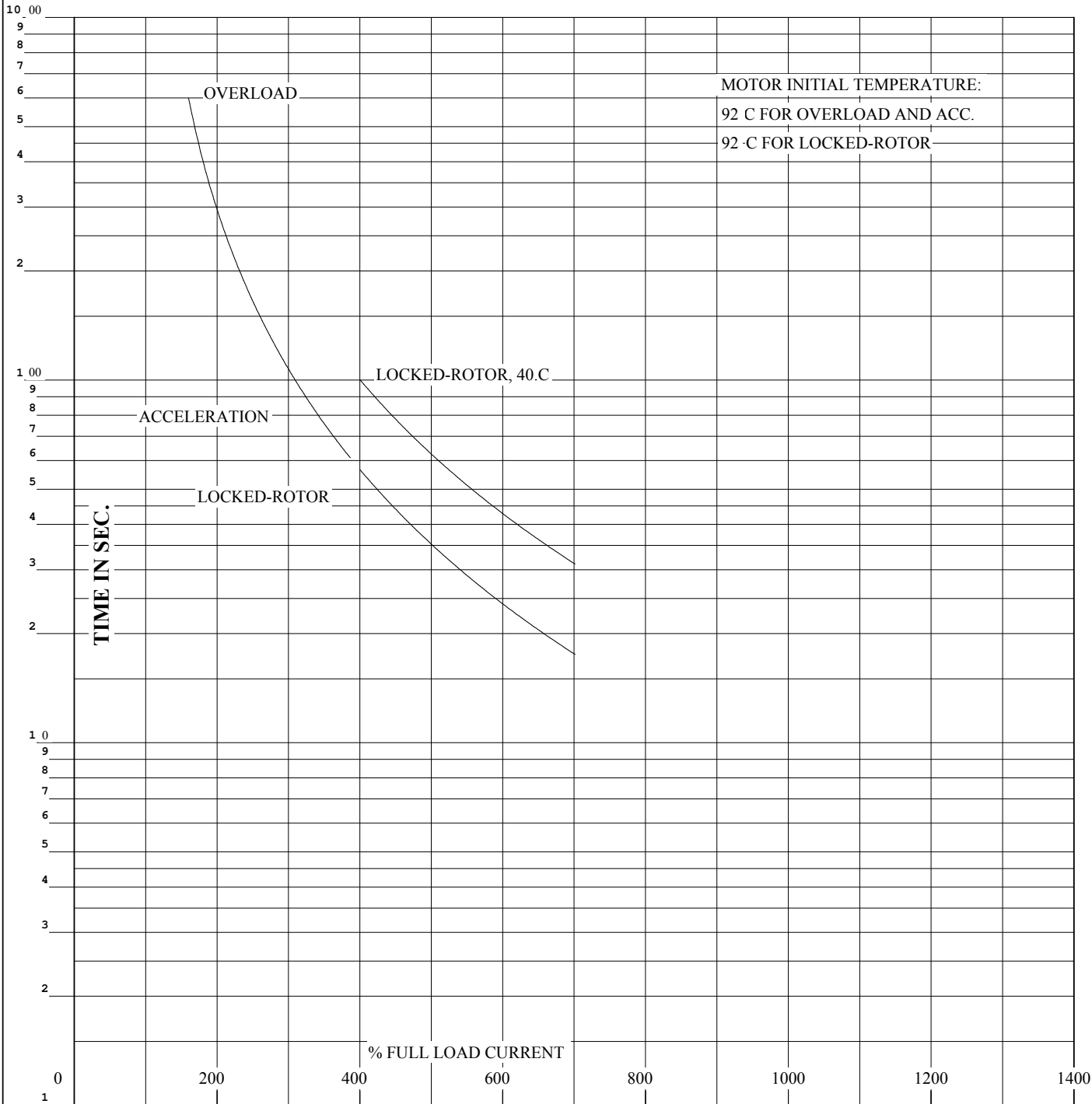
STATOR RES. @ 25 °C .0436

PHASE/HERTZ 3/60

AMB °C/INSUL 40/B

E/S 496084

OHMS (BETWEEN LINES)



THERMAL LIMIT CURVE

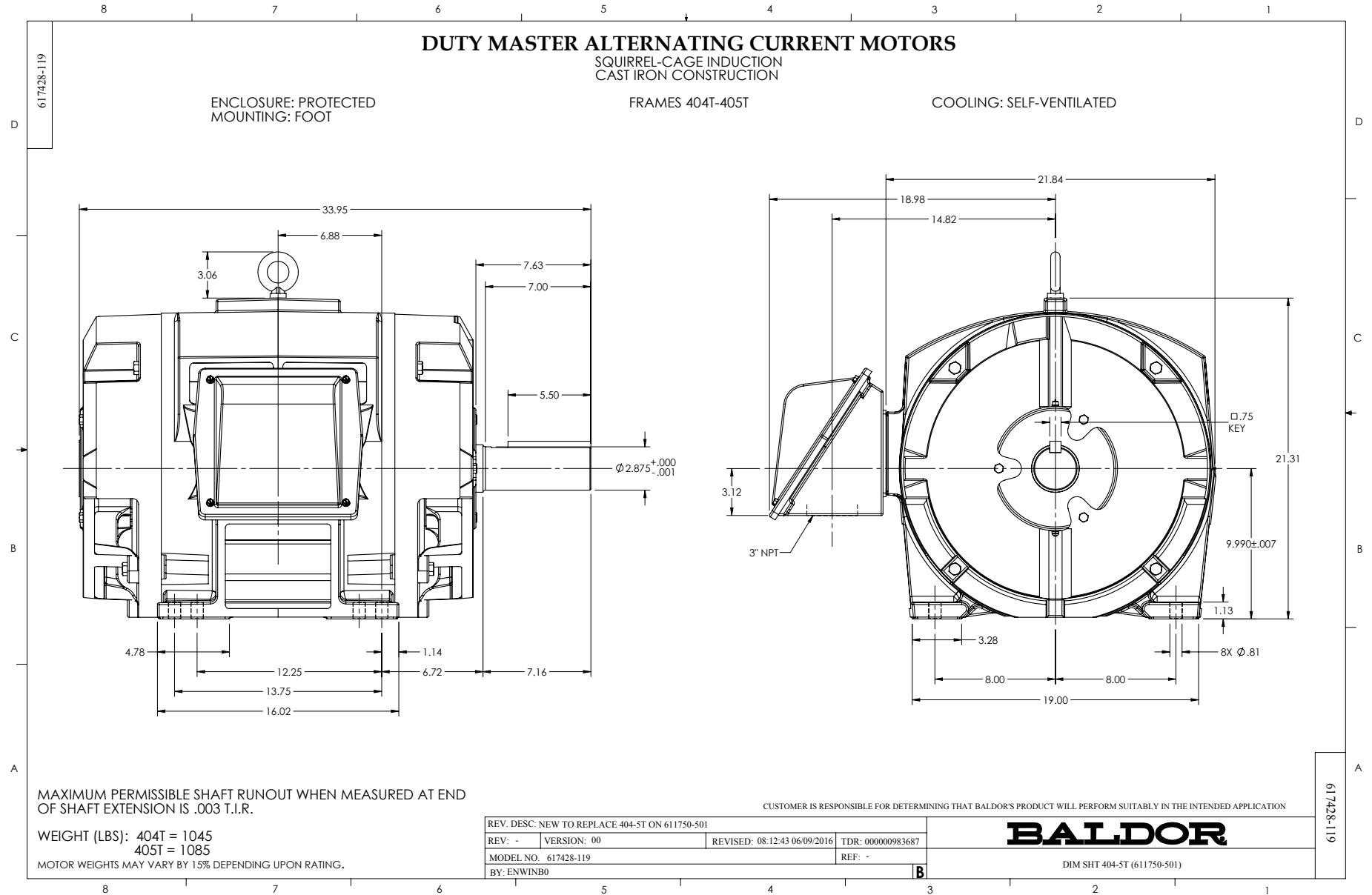
REMARKS: XE MOTOR-TYPICAL DATA-NEMA NOM. EFF. 95.4 PCT.
GUARANTEED MIN. EFF. 95.0

AMPERES SHOWN FOR 460 VOLT CONNECTION, IF OTHER VOLTAGE CONNECTIONS ARE AVAILABLE, THE AMPERES WILL VARY INVERSELY WITH THE RATED VOLTAGE.



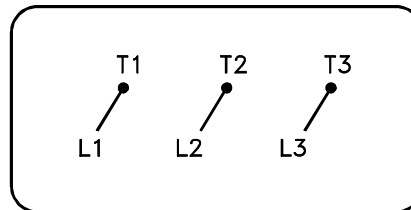
DR. BY P.B. GREENE
CK. BY K.W. KANOUFF
APP. BY K.W. KANOUFF
DATE 09/15/89

**A-C MOTOR
PERFORMANCE A40WG0248-R002
CURVES** ISSUE DATE 12/16/10



416820-036

A-C MOTOR
CONNECTION DIAGRAM
STANDARD 3 LEAD CONNECTED



(N.P. 1575-BA)

416820-036

REV. DESC: LOADED TO BUS, C/R 335225

REV. LTR: -

VERSION: 00

TDR: 000000538207

FILE: \MGA\00000\682

REVISED: 11:54:06 04/30/2010

MTL: -

BY: RAGRA

BALDOR

CONN DIAG - STANDARD 3 LEAD

SH 1 of 1