



Customer information packet

EM2557T-4

125HP, 1190RPM, 3PH, 60HZ, 445T, 1884M, OPEN

Class - None

Division - Not Applicable

Specifications

Enclosure	DP
Frame	445T
Frame Material	Iron
Frequency	60.00 Hz
Haz Area Class and Group	None
Haz Area Division	Not Applicable
Motor Letter Type	Three Phase
Output @ Frequency	125.000 HP @ 60 HZ
Phase	3
Synchronous Speed @ Frequency	1200 RPM @ 60 HZ
Voltage @ Frequency	460.0 V @ 60 HZ
Agency Approvals	CURUSEEV
Ambient Temperature	40 °C
Auxiliary Box	NO AUXILLARY BOX
Base Indicator	Rigid
Bearing Grease Type	Polyrex EM (-20F +300F)
Current @ Voltage	146.000 A @ 460.0 V
Design Code	B
Drip Cover	No Drip Cover
Duty Rating	CONT
Efficiency @ 100% Load	95.0 %
Feedback Device	NO FEEDBACK
Heater Indicator	No Heater
High Voltage Full Load Amps	146.0 a
Insulation Class	F
Inverter Code	Inverter Ready
KVA Code	F
Lifting Lugs	No Lifting Lugs
Motor Lead Quantity/Wire Size	6 @ 4 AWG
Motor Standards	NEMA
Motor Type	A44062M
Mounting Arrangement	F1

Part detail

Revision	N
Type	AC
Mech. spec.	
Base	
Status	PRD/A
Elec. spec.	A44WG1482
Layout	617428-042
Eff. date	12-10-2025
CD Diagram	416820-008
Poles	06
Leads	6#4
Proprietary	False
Created date	10-19-2010

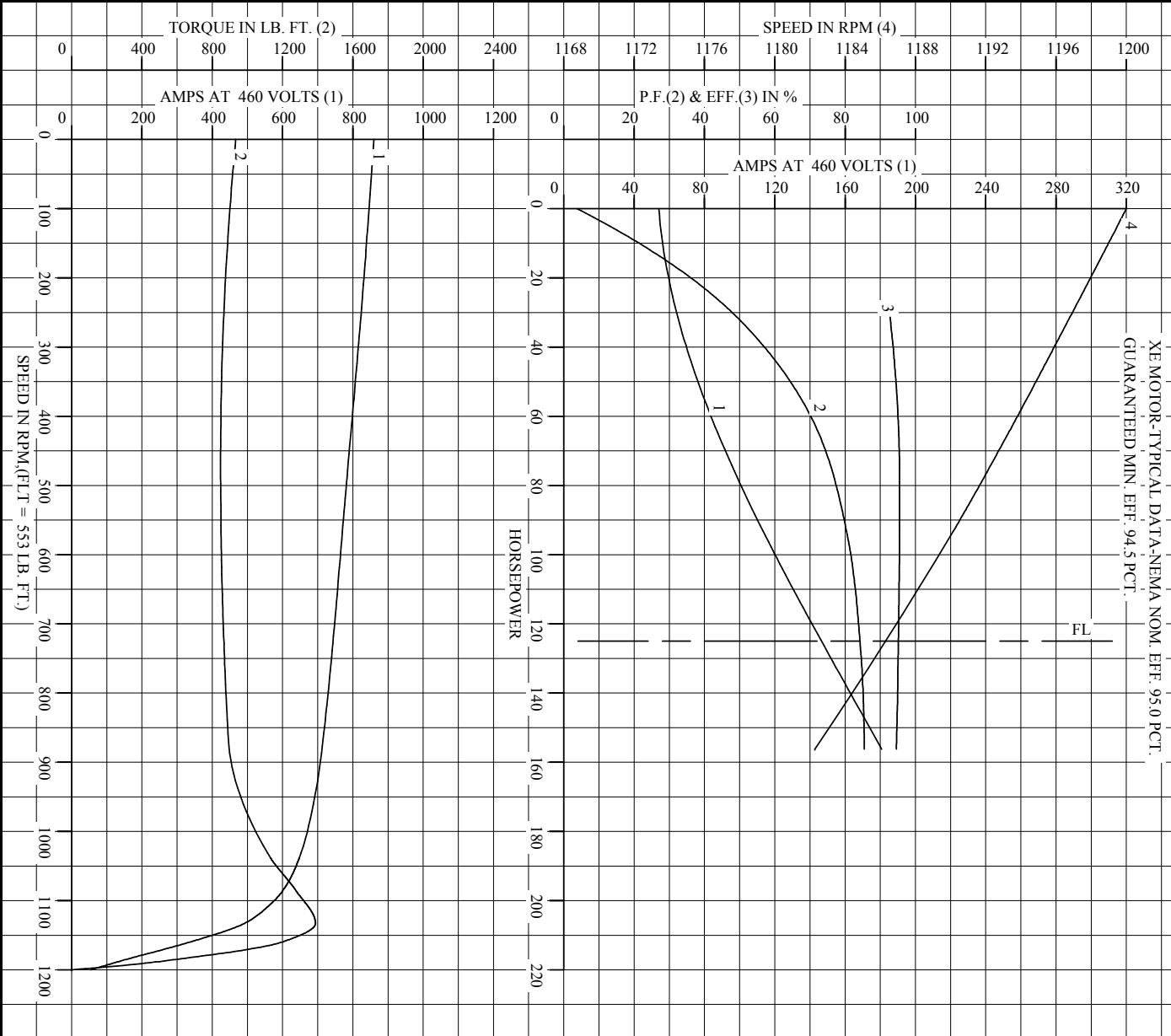
Number of Poles	6
Overall Length	39.71 IN
Power Factor	84
Pulley End Bearing Type	Ball
Pulley Face Code	Standard
Service Factor	1.15
Shaft Diameter	3.375 IN
Shaft Ground Indicator	No Shaft Grounding
Shaft Rotation	Reversible
Shaft Slinger Indicator	No Slinger
Speed	1185 rpm
Speed Code	Single Speed
Starting Method	Wye Start - Delta Run
Thermal Device - Bearing	None
Thermal Device - Winding	None

Nameplate

NP2377L

CAT.NO.	EM2557T-4	SPEC NO.	P44G1772						
HP	125	AMPS	146	VOLTS	460	DESIGN	B		
FRAME	445T	RPM	1185	HZ	60	AMB	40	SF	1.15
DRIVE END BEARING	90BC03J30X	PHASE	3	DUTY	CONT	INSUL.CLASS	F		
OPP D.E. BEARING	90BC03J30X	TYPE	P	ENCL	DP	CODE	F		
SER.NO.		POWER FACTOR	84	NEMA-NOM-EFFICIENCY	95				
		MAX CORR KVAR	30.0	GUARANTEED EFFICIENCY	94.5				
		NEMA NOM/CSA QUOTED EFF							
		MOTOR WEIGHT							

REL. S.O.		RPM	1185	S.F.	1.15	ROTOR	418143-79-XE
FRAME	445T	VOLTS	460	NEMA DESIGN	B	TEST S.O.	----
HP	125	AMPS	146	CODE LETTER	F	TEST DATE	----
TYPE	P	DUTY CONT		ENCLOSURE PRXE		STATOR RES. @ 25 °C	0.0466
PHASE/HERTZ	3/60	AMB °C/INSUL	40/F	E/S	498798	OHMS (BETWEEN LINES)	



AMPERES SHOWN FOR 460 VOLTS CONNECTION, IF OTHER VOLTAGE CONNECTIONS ARE AVAILABLE, THE AMPERES WILL VARY INVERSELY WITH THE RATED VOLTAGE.



DR. BY J.HARRISON
 CK. BY W.L.SMITH
 APP. BY W.L.SMITH
 DATE 04/06/11

A-C MOTOR PERFORMANCE CURVES
 A44WG1482-R001
 ISSUE DATE 04/06/11

REL. S.O.	FRAME	HP	TYPE	PHASE/HERTZ	RPM	VOLTS
	445T	125	P	3/60	1185	460

AMPS	DUTY	AMB °C/ INSUL.	S.F.	NEMA DESIGN	CODE LETTER	ENCL.
146	CONT	40/F	1.15	B	F	PRXE

E/S	ROTOR	TEST S.O.	TEST DATE	STATOR RES. @25 °C (OHMS BETWEEN LINES)
498798	418143-79-XE	---	---	.0466

PERFORMANCE						
LOAD	HP	AMPERES	RPM	POWER FACTOR %	EFFICIENCY %	
NO LOAD	0	54.2	1200	3.77	0	
1/4	31.3	64.2	1197	49.2	92.8	
2/4	62.5	86.1	1194	71.5	95.2	
3/4	93.7	114	1190	80.5	95.5	
4/4	125	146	1186	84.2	95.2	
5/4	156	181	1182	85.4	94.6	

SPEED TORQUE						
	RPM	% FULL LOAD	TORQUE LB.-FT.	AMPERES		
LOCKED ROTOR	0	169	934	860		
PULL UP	468	153	847	787		
BREAKDOWN	1133	251	1387	491		
FULL LOAD	1186	100	553	146		

AMPERES SHOWN FOR 460. VOLT CONNECTION. IF OTHER VOLTAGE CONNECTIONS ARE AVAILABLE, THE AMPERES WILL VARY INVERSELY WITH THE RATED VOLTAGE

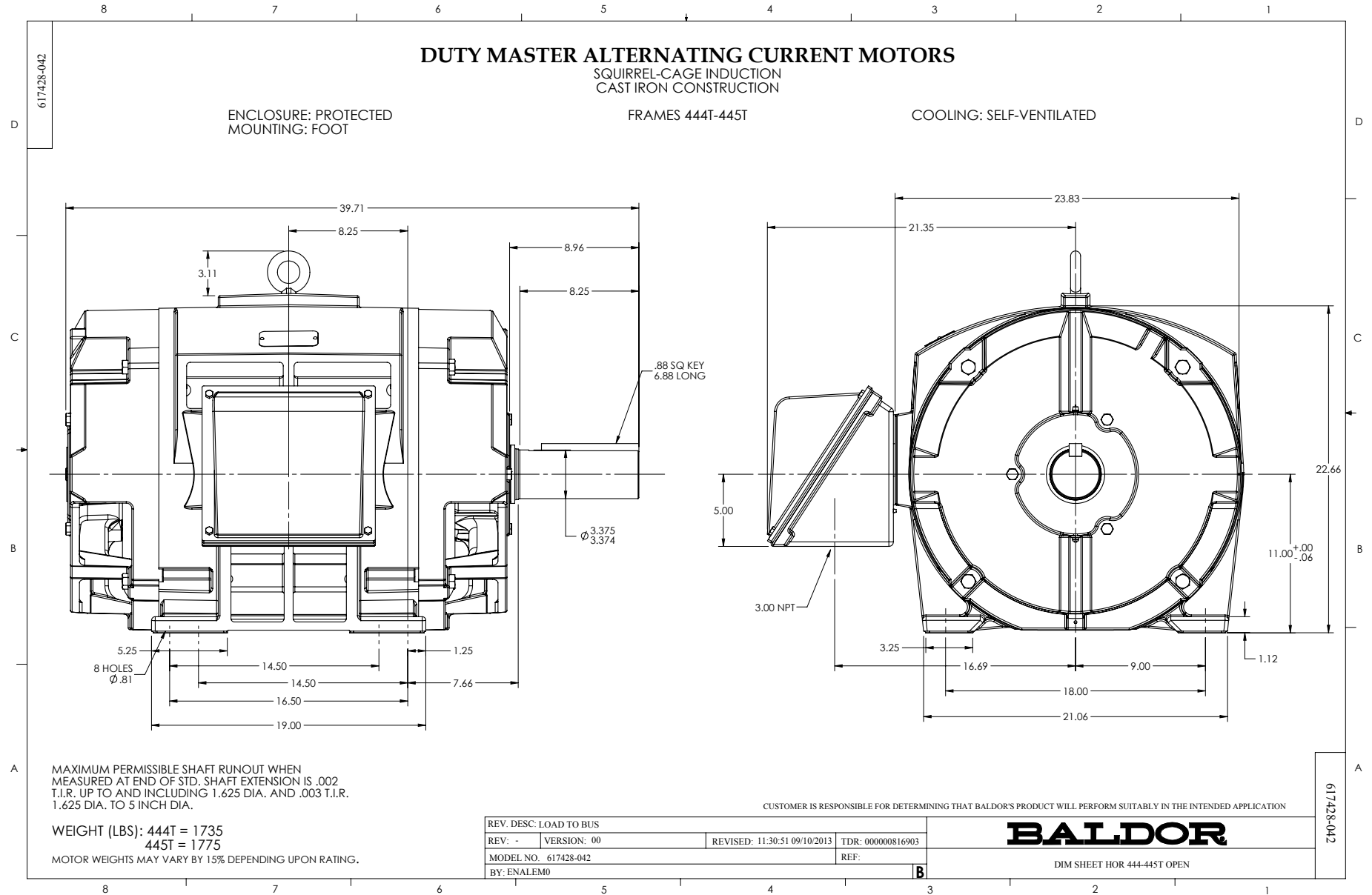
REMARKS: XE MOTOR-TYPICAL DATA-NEMA NOM. EFF. 95.0 PCT. GUARANTEED MIN. EFF. 94.5 PCT.



DR. BY J.J. HARRISON
 CK. BY W.I. SMITH
 APP. BY W.I. SMITH
 DATE 04/06/11

A-C MOTOR PERFORMANCE DATA

A44WG1482-R001
 ISSUE DATE 04/06/11

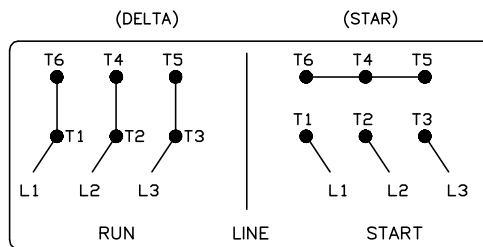
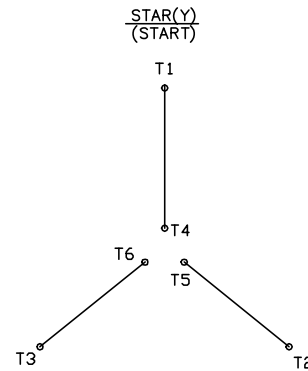
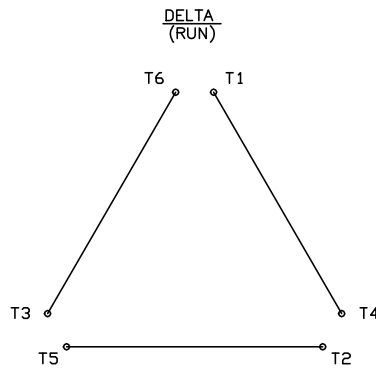


416820-008

A-C MOTOR CONNECTION DIAGRAM

STANDARD 6 LEAD

Y START – DELTA RUN



< N. P. 1767-DC >

REV. DESC: ADDED T4 TO Y CONNECT DIAGRAM		
REV. LTR: D	VERSION: 04	TDR: 00000847713
FILE: \RAG\00001\808	REVISED: 10: 41: 26 04/08/2014	BY: RAGJSS1
MTL: -	© □	

BALDOR

CONNECT DIAGRAM STD 6 LEAD Y START DELTA RUN

SH 1 of 1

416820-008