

BALDOR • RELIANCE

Customer information packet

EM2556T-4

150HP, 3540RPM, 3PH, 60HZ, 405TS, 4464M, OPSB

Specifications

Enclosure	OPSB
Frame	405TS
Frame Material	Steel
Frequency	60.00 Hz
Motor Letter Type	Three Phase
Output @ Frequency	150.000 HP @ 60 HZ
Phase	3
Synchronous Speed @ Frequency	3600 RPM @ 60 HZ
Voltage @ Frequency	460.0 V @ 60 HZ
Agency Approvals	CSA EEV UR NEMA_PREMIUM NEMA PREMIUM
Ambient Temperature	40 °C
Auxillary Box	No Auxillary Box
Auxillary Box Lead Termination	None
Base Indicator	Rigid
Bearing Grease Type	Polyrex EM (-20F +300F)
Blower	None
Current @ Voltage	166.000 A @ 460.0 V
Design Code	B
Drip Cover	No Drip Cover
Duty Rating	CONT
Efficiency @ 100% Load	94.1 %
Electrically Isolated Bearing	Not Electrically Isolated
Feedback Device	NO FEEDBACK
Front Face Code	Standard
Front Shaft Indicator	None
Heater Indicator	No Heater
High Voltage Full Load Amps	166.0 a
Insulation Class	F
Inverter Code	Not Inverter

Part detail

Revision	Q
Type	AC
Mech. spec.	44E194
Base	
Status	PRD/A
Elec. spec.	44WGW254
Layout	44LYE194
Eff. date	02-12-2024
CD Diagram	CD0382
Poles	02
Leads	6#2
Proprietary	False
Created date	05-15-2012

IP Rating	NONE
KVA Code	H
Lifting Lugs	Standard Lifting Lugs
Locked Bearing Indicator	Locked Bearing
Motor Lead Exit	Ko Box
Motor Lead Quantity/Wire Size	6 @ 2 AWG
Motor Lead Termination	Flying Leads
Motor Standards	NEMA
Motor Type	4464M
Mounting Arrangement	F1
Number of Poles	2
Overall Length	31.85 IN
Power Factor	91
Product Family	General Purpose
Pulley End Bearing Type	Ball
Pulley Face Code	Standard
Pulley Shaft Indicator	Standard
Rodent Screen	None
Service Factor	1.15
Shaft Diameter	2.125 IN
Shaft Extension Location	Pulley End
Shaft Ground Indicator	No Shaft Grounding
Shaft Rotation	Reversible
Shaft Slinger Indicator	No Slinger
Speed	3540 rpm
Speed Code	Single Speed
Starting Method	Wye Start - Delta Run
Thermal Device - Bearing	None
Thermal Device - Winding	None
Vibration Sensor Indicator	No Vibration Sensor
Winding Thermal 1	None
Winding Thermal 2	None

Nameplate

NP2138L

CAT.NO.	EM2556T-4	P/N		ENCLOSURE	OPSB		
SPEC.	44E194W254G1	CC	010A	FRAME	405TS	S/N	
HP	150	CLASS	F	HZ	60		
RPM	3540	PH	3	DES	B		
VOLT	460	KVA-CODE	H	ODE BRG	6312	DE BRG	6312
AMP	166						
RATING	40C AMB-CONT	GREASE	POLYREX EM				
NEMA-NOM-EFF	94.1	PF	91	SER.F.	1.15		
HTR-VOLTS		HTR-AMPS					

Accessories

Part number	Description	Multiplier
44-1403A	C FACE KIT 44/404 USC TSC 6312 BRG	A8

AC Induction Motor Performance Data

Record # 38383

Typical performance - not guaranteed values

Winding: 44WGW254-R003		Type: 4464M	Enclosure: OPSB
Nameplate Data		460 V, 60 Hz: Single Voltage Motor	
Rated Output (HP)	150	Full Load Torque	224 LB-FT
Volts	460	Start Configuration	direct on line
Full Load Amps	166	Breakdown Torque	758 LB-FT
R.P.M.	3540	Pull-up Torque	264 LB-FT
Hz	60 Phase	Locked-rotor Torque	315 LB-FT
NEMA Design Code	B KVA Code	Starting Current	1225 A
Service Factor (S.F.)	1.15	No-load Current	37.6 A
NEMA Nom. Eff.	94.1 Power Factor	Line-line Res. @ 25°C	0.0479 Ω
Rating - Duty	40C AMB-CONT	Temp. Rise @ Rated Load	54°C
S.F. Amps		Temp. Rise @ S.F. Load	66°C
		Locked-rotor Power Factor	25.8
		Rotor inertia	8.37 lb-ft ²

Load Characteristics 460 V, 60 Hz, 150 HP

% of Rated Load	25	50	75	100	125	150	S.F.
Power Factor	70	86	90	91	91	91	91
Efficiency	90.6	93.8	94.3	94	93.4	93.4	93.6
Speed	3589	3576	3565	3549	3532	3519	3539
Line amperes	56.5	89.2	126	166	210	247	192

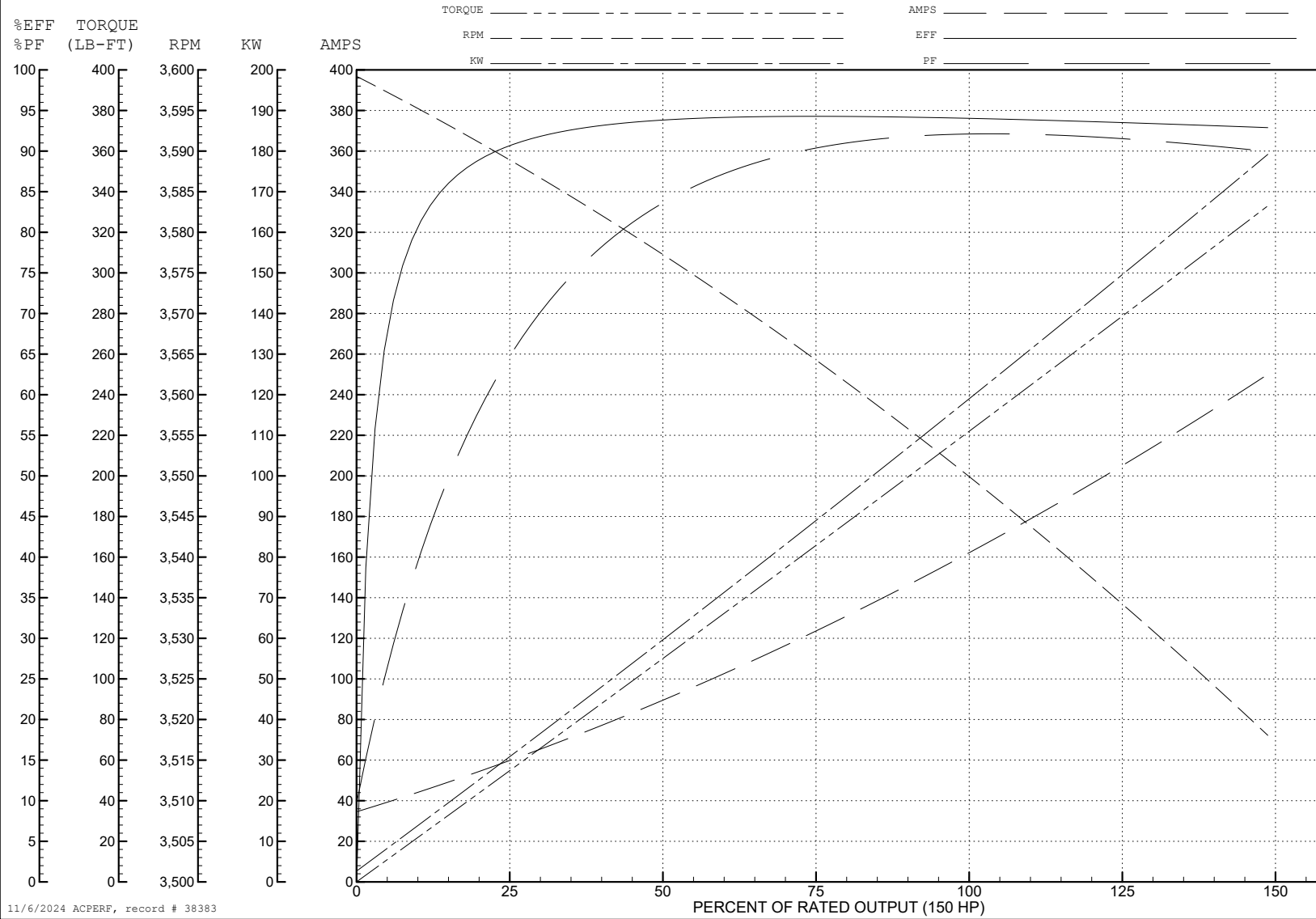
ABB Motors and Mechanical Inc.

WINDING # 44WGW254

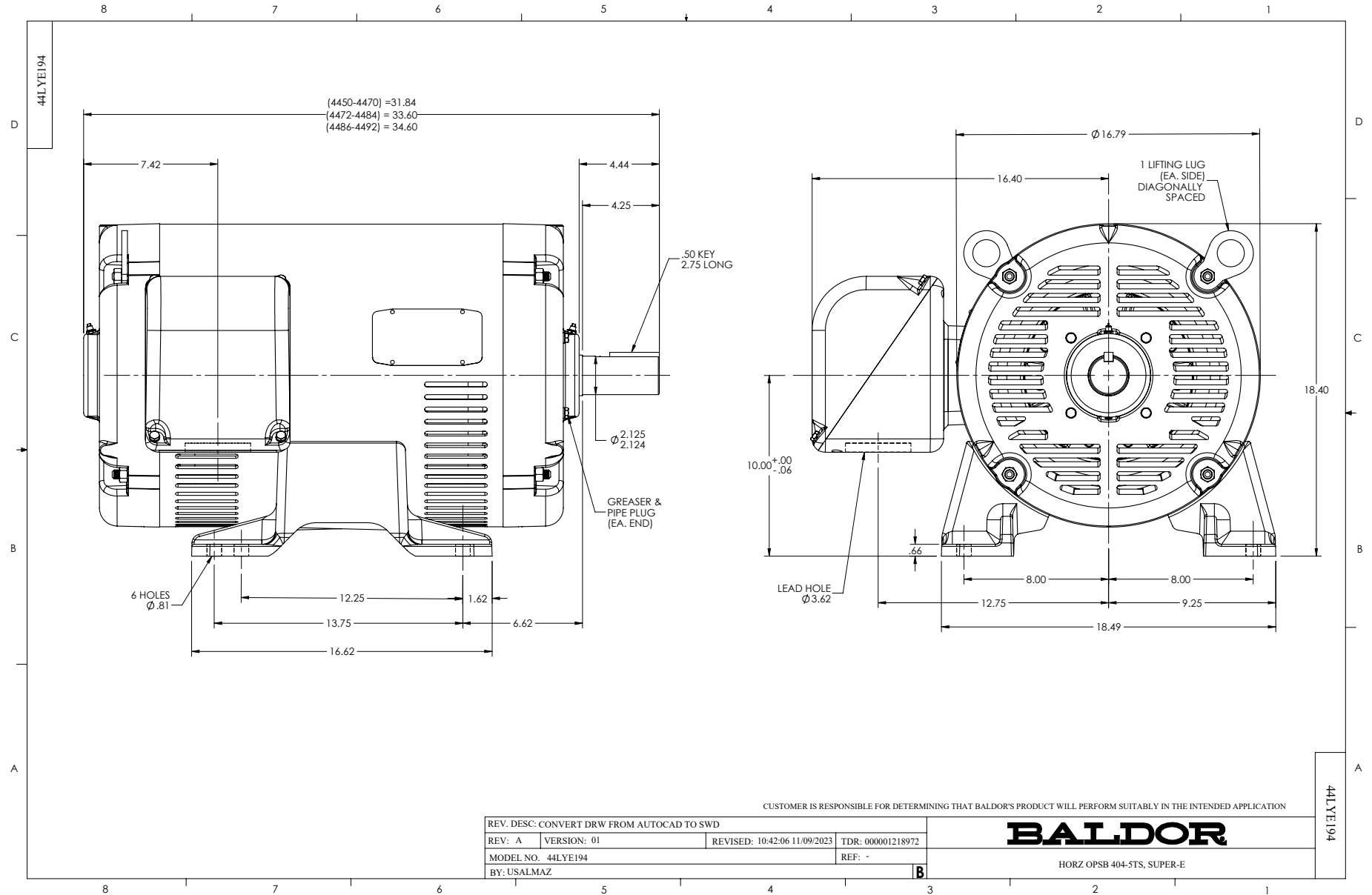
150 HP 3 PH 60 HZ 3540 RPM 460 V 4464M

Typical performance - not guaranteed values.

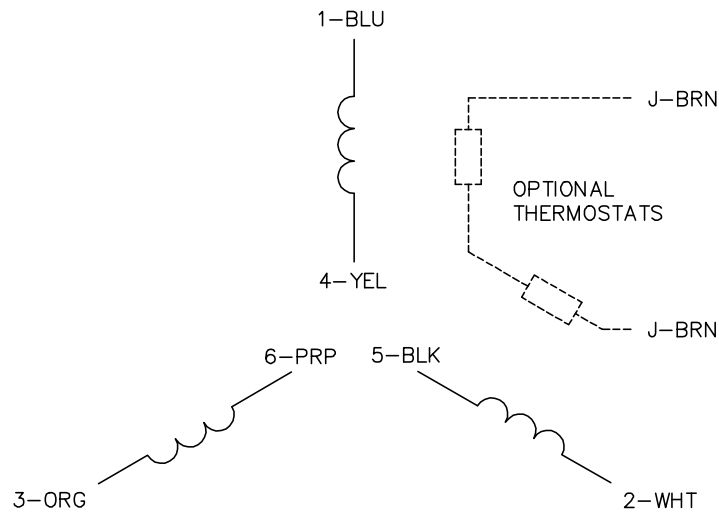
TORQUES (LB-FT): PO=758 PU=264 LR=315 LRA=1225



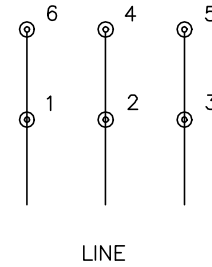
11/6/2024 ACPERF, record # 38383



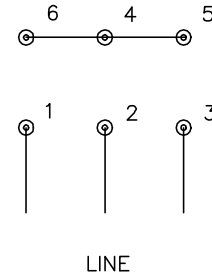
CD0382



RUN CONNECTION (1D)



START CONNECTION (1Y)



NOTES:

1. INTERCHANGE ANY TWO LINE LEADS TO REVERSE ROTATION.
2. OPTIONAL THERMOSTATS ARE PROVIDED WHEN SPECIFIED.
3. ACTUAL NUMBER OF INTERNAL PARALLEL CIRCUITS MAY BE A MULTIPLE OF THOSE SHOWN ABOVE.
4. LEAD COLORS ARE OPTIONAL. LEADS MUST ALWAYS BE NUMBERED AS SHOWN.
5. FOR ACROSS-THE-LINE STARTING, USE 'RUN' CONNECTION.

CD0382

REV. DESC: ADD CLASS CONN00000007		
REV. LTR: F	VERSION: 01	TDR: 000001099922
FILE: \AAA\00005\243	REVISED: 09:05:32 02/19/2019	BY: ENBRIRO
MTL: -	© □	

BALDOR - RELIANCE®

3PH, SV, 6 LEADS, Y START/D RUN

SH 1 of 1