

DUTY MASTER ALTERNATING CURRENT MOTORS

SQUIRREL-CAGE INDUCTION  
CAST IRON CONSTRUCTION

ENCLOSURE: PROTECTED  
MOUNTING: FOOT

FRAMES 364T-365T

COOLING: SELF-VENTILATED

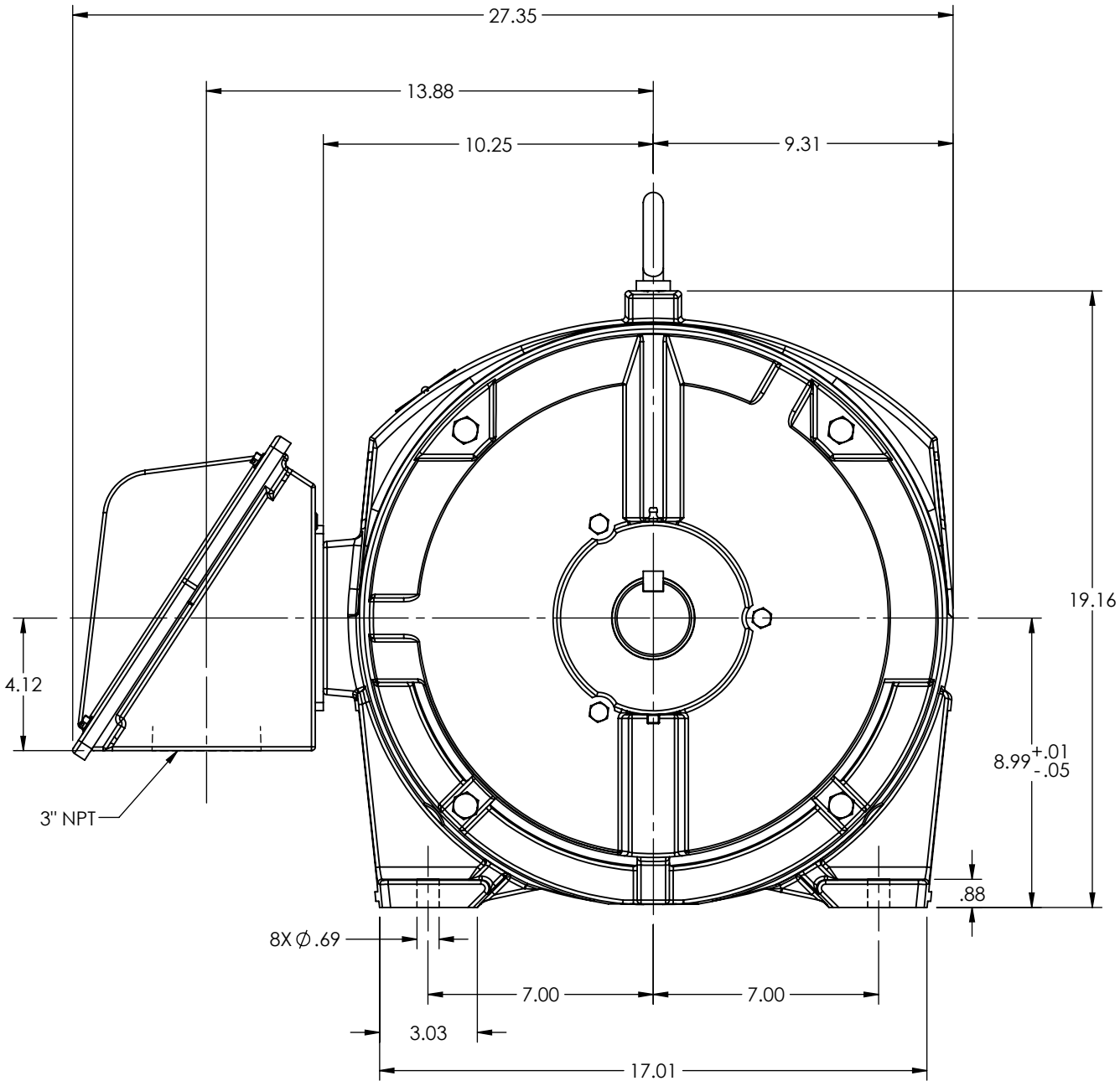
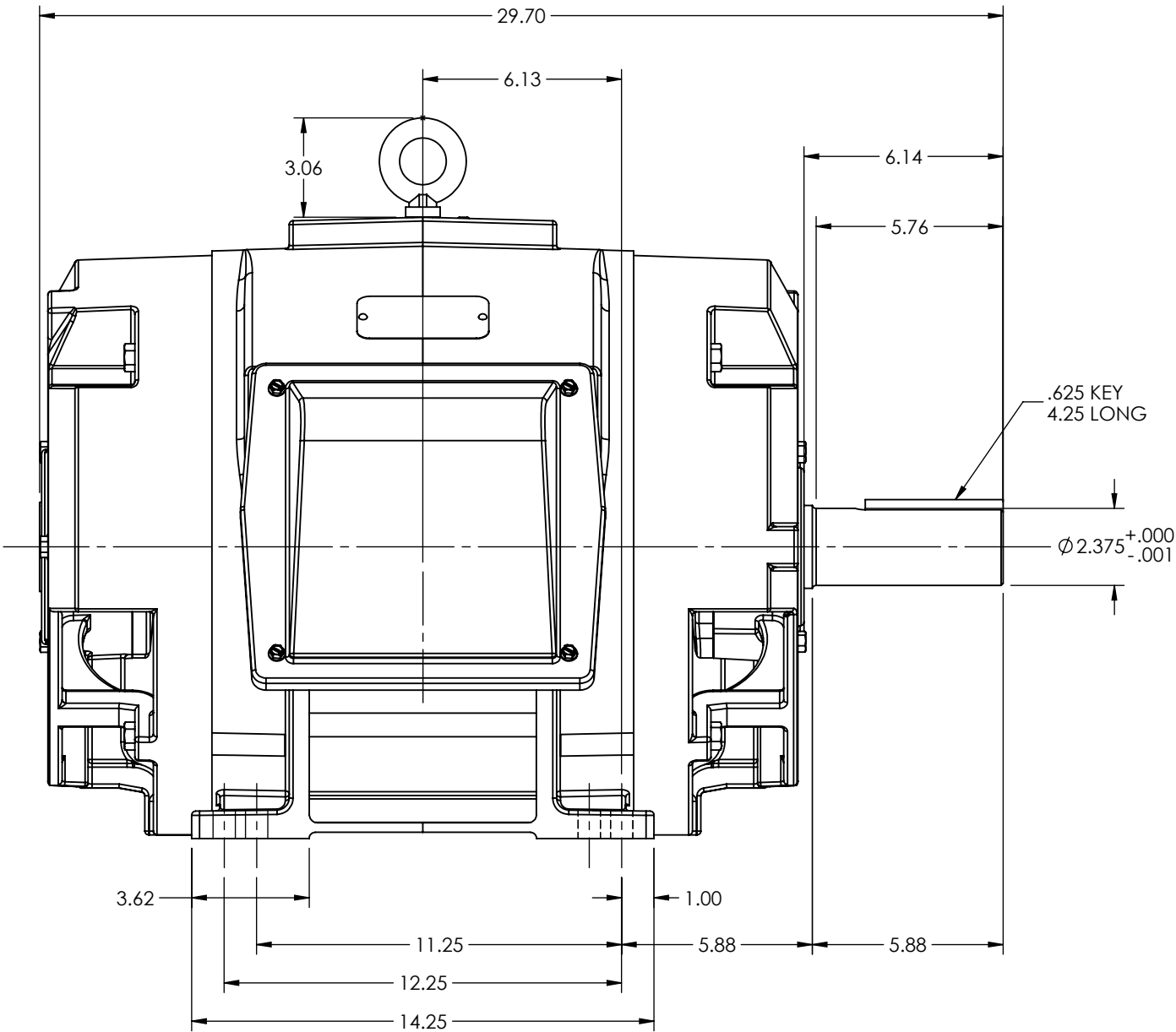
617428-116

D

C

B

A



D

C

B

A

MAXIMUM PERMISSIBLE SHAFT RUNOUT WHEN MEASURED AT END  
OF SHAFT EXTENSION IS .003 T.I.R.

WEIGHT (LBS): 364T = 735  
365T = 775

MOTOR WEIGHTS MAY VARY BY 15% DEPENDING UPON RATING.

CUSTOMER IS RESPONSIBLE FOR DETERMINING THAT BALDOR'S PRODUCT WILL PERFORM SUITABLY IN THE INTENDED APPLICATION

REV. DESC: UPDATE MODEL TO ADD EXTERNAL HARDWARE PER PROD MGM			
REV: A	VERSION: 01	REVISED: 10:39:10 10/04/2022	TDR: 000001196512
MODEL NO. 617428-116			REF: -
BY: ENFRAJ0			<b>B</b>

**BALDOR**

DIM SHT 364-5T (611750-501)

617428-116