



---

# Customer information packet

## EM2544T-CI

50HP, 1185RPM, 3PH, 60HZ, 365T, 1466M, OPEN, F1

Class - None

Division - Not Applicable

## Specifications

Enclosure	DP
Frame	365T
Frame Material	Iron
Frequency	60.00 Hz
Haz Area Class and Group	None
Haz Area Division	Not Applicable
Motor Letter Type	Three Phase
Output @ Frequency	50.000 HP @ 60 HZ
Phase	3
Synchronous Speed @ Frequency	1200 RPM @ 60 HZ
Voltage @ Frequency	230.0 V @ 60 HZ 460.0 V @ 60 HZ
Agency Approvals	CCSA US CCSAUSEEV CSA EEV CURUSEEV
Ambient Temperature	40 °C
Auxiliary Box	NO AUXILLARY BOX
Base Indicator	Rigid
Bearing Grease Type	Polyrex EM (-20F +300F)
Current @ Voltage	60.300 A @ 460.0 V 120.000 A @ 230.0 V
Design Code	B
Drip Cover	No Drip Cover
Duty Rating	CONT
Efficiency @ 100% Load	94.1 %
Feedback Device	NO FEEDBACK
Heater Indicator	No Heater
High Voltage Full Load Amps	60.3 a
Insulation Class	F
Inverter Code	Inverter Ready
KVA Code	G

## Part detail

Revision	Q
Type	AC
Mech. spec.	
Base	
Status	PRD/A
Elec. spec.	A36WG0753
Layout	617428-130
Eff. date	09-04-2024
CD Diagram	416820-002
Poles	06
Leads	3#6,6#8
Proprietary	False
Created date	10-19-2010

<b>Lifting Lugs</b>	<b>Standard Lifting Lugs</b>
<b>Motor Lead Quantity/Wire Size</b>	3 @ 6 AWG
<b>Motor Standards</b>	NEMA
<b>Motor Type</b>	A36052M
<b>Mounting Arrangement</b>	F1
<b>Number of Poles</b>	6
<b>Overall Length</b>	29.70 IN
<b>Power Factor</b>	83
<b>Pulley End Bearing Type</b>	Ball
<b>Pulley Face Code</b>	Standard
<b>Service Factor</b>	1.15
<b>Shaft Diameter</b>	2.374 IN
<b>Shaft Ground Indicator</b>	No Shaft Grounding
<b>Shaft Rotation</b>	Reversible
<b>Shaft Slinger Indicator</b>	No Slinger
<b>Speed</b>	1185 rpm
<b>Speed Code</b>	Single Speed
<b>Starting Method</b>	Direct on line
<b>Thermal Device - Bearing</b>	None
<b>Thermal Device - Winding</b>	None

**Nameplate**

**NP2349L**

<b>SPEC NO.</b>	P36G3403	<b>CAT.NO.</b>	EM2544T-CI	<b>FRAME</b>	365T
<b>HP</b>	50	<b>VOLTS</b>	230/460	<b>PHASE</b>	3
<b>RPM</b>	1185	<b>AMPS</b>	120/60.3	<b>HZ</b>	60
<b>DRIVE END BEARING</b>	65BC03J30X	<b>DUTY</b>	CONT	<b>INSUL.CLASS</b>	F
<b>OPP D.E. BEARING</b>	65BC03J30X	<b>ENCL</b>	DP	<b>CODE</b>	G
<b>SER.NO.</b>		<b>POWER FACTOR</b>	83	<b>NEMA-NOM-EFFICIENCY</b>	94.1
				<b>MAX CORR KVAR</b>	15.0
				<b>GUARANTEED EFFICIENCY</b>	93.6
				<b>NEMA NOM/CSA QUOTED EFF</b>	
				<b>MOTOR WEIGHT</b>	

REL. S.O.	FRAME	HP	TYPE	PHASE/HERTZ	RPM	VOLTS
	365T	50	P	3/60	1185	230/460

AMPS	DUTY	AMB °C/ INSUL.	S.F.	NEMA DESIGN	CODE LETTER	ENCL.
120/60.3	CONT	40/F	1.15	B	G	PROT

E/S	ROTOR	TEST S.O.	TEST DATE	STATOR RES. @25 °C (BETWEEN LINES)
892140	418141-70-NE	---	---	.0393/.157


PERFORMANCE						
LOAD	HP	AMPERES	RPM	POWER FACTOR %	EFFICIENCY %	
NO LOAD	0	24.8	1200	3.81	0	
1/4	12.5	28.4	1196	45.1	91.7	
2/4	25.0	36.6	1193	67.9	94.3	
3/4	37.5	47.5	1189	78.2	94.5	
4/4	50.0	60.1	1185	82.8	94.1	
5/4	62.5	74.0	1180	84.7	93.3	

SPEED TORQUE						
	RPM	% FULL LOAD TORQUE	TORQUE LB.-FT.	AMPERES		
LOCKED ROTOR	0	149	330	353		
PULL UP	350	122	271	322		
BREAKDOWN	1118	246	546	209		
FULL LOAD	1185	100	222	60.1		

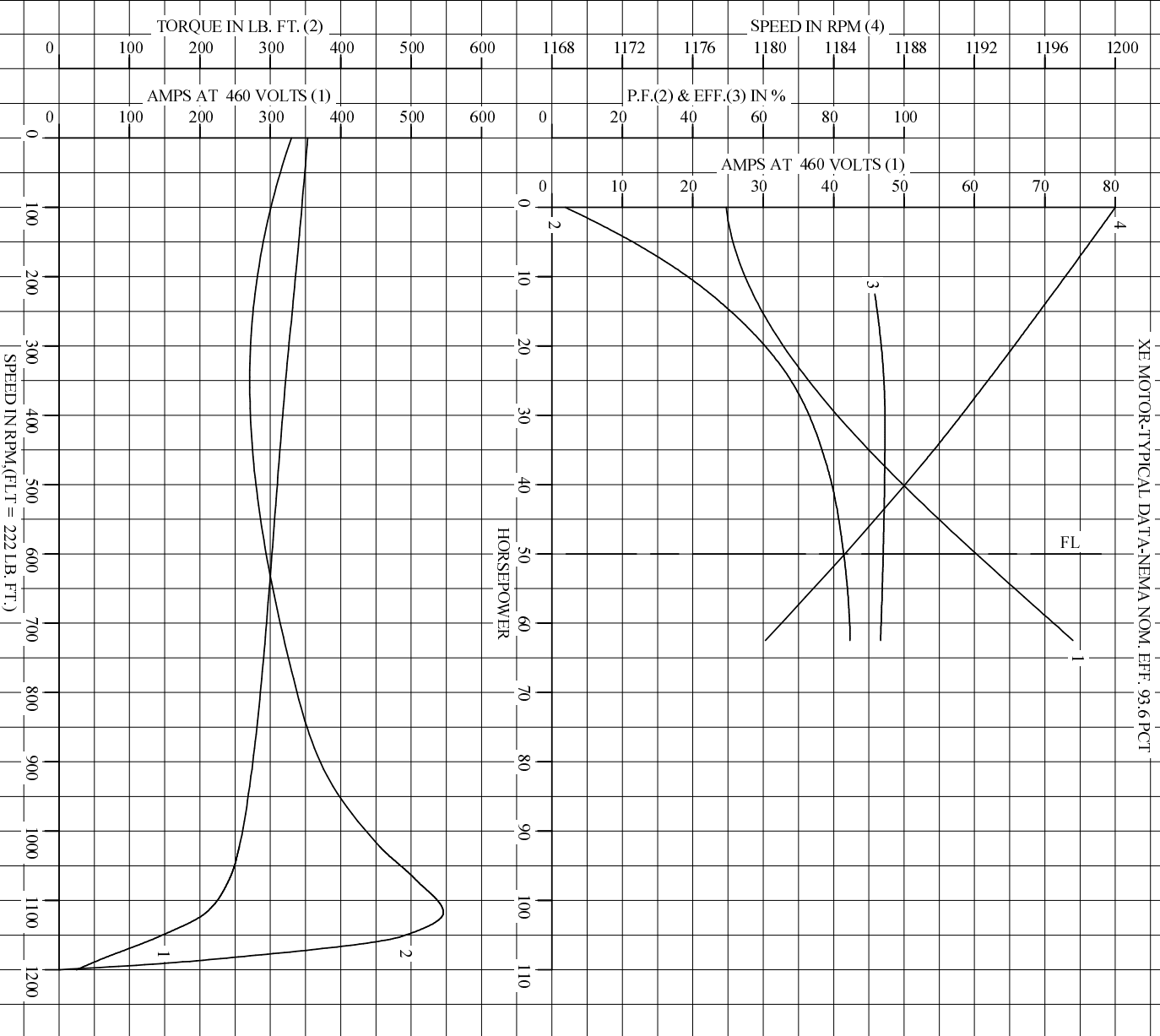
AMPERES SHOWN FOR 460. VOLT CONNECTION. IF OTHER VOLTAGE CONNECTIONS ARE AVAILABLE, THE AMPERES WILL VARY INVERSELY WITH THE RATED VOLTAGE

REMARKS: TYPICAL DATA

XE MOTOR-TYPICAL DATA-NEMA NOM. EFF. 93.6 PCT

	DR. BY	W. L. SMITH	<b>A-C MOTOR PERFORMANCE DATA</b> A36WG0753-R001 ISSUE DATE 12/15/10
	CR. BY	J. J. HARRISON	
	APP. BY	W. L. SMITH	
	DATE	03/03/06	

REL S.O.		RPM	1185	S.F.	1.15	ROTOR	418141-70-NE
FRAME	365T	VOLTS	230/460	NEMA DESIGN	B	TEST S.O.	TYPICAL DATA
HP	50	AMPS	120/60.3	CODE LETTER	G	TEST DATE	---
TYPE	P	DUTY CONT		ENCLOSURE PROT		STATOR RES. @ 25 °C	0.0393/.157
PHASE/HERTZ	3/60	AMB °C/INSUL	40/F	E/S	892140	OHMS (BETWEEN LINES)	



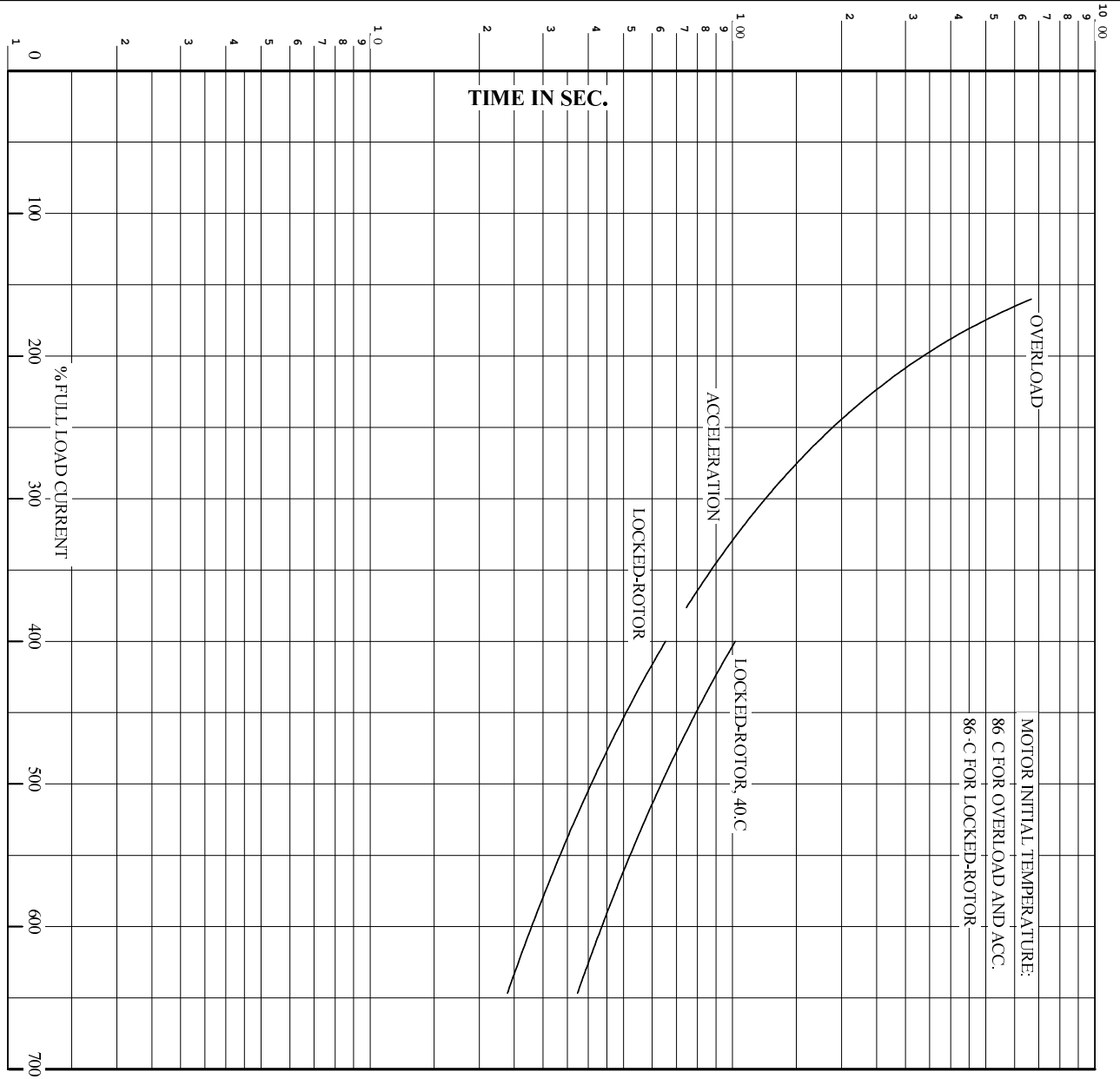
AMPERES SHOWN FOR 460 VOLTS CONNECTION, IF OTHER VOLTAGE CONNECTIONS ARE AVAILABLE, THE AMPERES WILL VARY INVERSELY WITH THE RATED VOLTAGE.



DR. BY W.L. SMITH  
 CK. BY J.HARRISON  
 APP. BY W.L. SMITH  
 DATE 03/03/06

**A-C MOTOR**  
**PERFORMANCE** A36WG0753-R001  
**CURVES** ISSUE DATE 12/15/10

REL. S.O. RPM 1185 S.F. 1.15 ROTOR 418141-70-NE  
 FRAME 365T VOLTS 230/460 NEMA DESIGN B TEST S.O. TYPICAL DATA  
 HP 50 AMPS 120/60.3 CODE LETTER G TEST DATE ---  
 TYPE P DUTY CONT ENCLOSURE PROT STATOR RES. @ 25 °C: 0393/.157  
 PHASE/HERTZ 3/60 AMP °C/INSUL 40/F E/S 892140 OHMS (BETWEEN LINES)



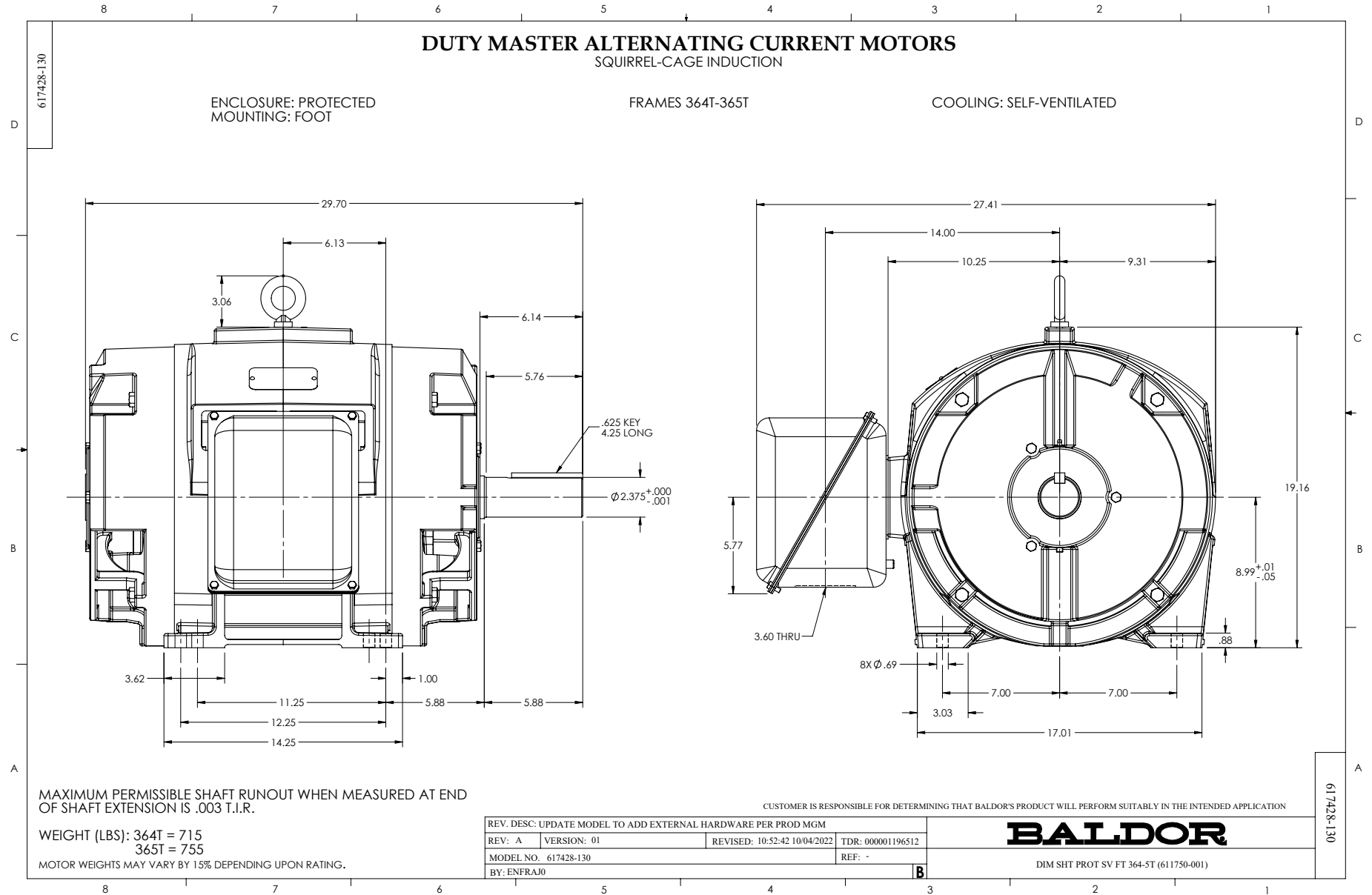
REMARKS: THERMAL LIMIT CURVE  
 XE MOTOR-TYPICAL DATA-NEMA NOM. EFF. 93.6 PCT

AMPERES SHOWN FOR 460 VOLT CONNECTION, IF OTHER VOLTAGE CONNECTIONS ARE AVAILABLE, THE AMPERES WILL VARY INVERSELY WITH THE RATED VOLTAGE.



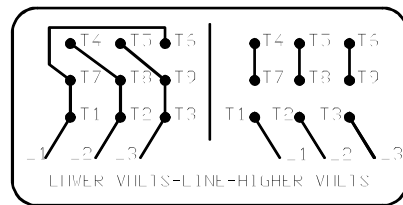
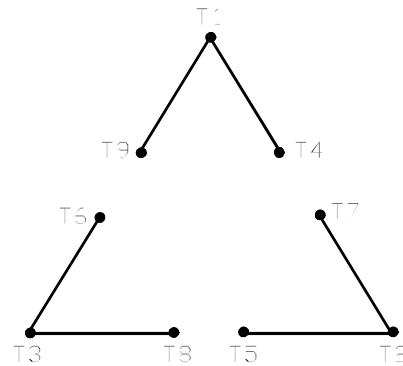
DR. BY W.L. SMITH  
 CK. BY J.HARRISON  
 APP. BY W.L. SMITH  
 DATE 03/03/06

**A-C MOTOR PERFORMANCE CURVES**  
**A36WC0753-R001**  
 ISSUE DATE 12/15/10



416820-002

A-C MOTOR  
 CONNECTION DIAGRAM  
 STANDARD 9 LEAD DELTA-CONNECTED



(N.P. 1575-B)

416820-002

REV. DESC: FONT CHANGE FOR PDF SEARCHABLE		
REV. LTR: A	VERSION: 01	TDR: 000001009382
FILE: \MGA\00000\661	REVISED: 02:46:19 02/13/2020	BY: MGHMTT
MTL: -	© □	

**BALDOR - RELIANCE®**

CONN DIAG - STANDARD 9 LEAD, DELTA-CONNECTED

SH 1 of 1