

**BALDOR • RELIANCE**

---

# Customer information packet

## EM2539T-G

40HP, 1770RPM, 3PH, 60HZ, 324T, 4064M, OPSB, F1

## Specifications

Enclosure	OPSB
Frame	324T
Frame Material	Steel
Frequency	60.00 Hz
Motor Letter Type	Three Phase
Output @ Frequency	40.000 HP @ 60 HZ
Phase	3
Synchronous Speed @ Frequency	1800 RPM @ 60 HZ
Voltage @ Frequency	230.0 V @ 60 HZ 460.0 V @ 60 HZ
Agency Approvals	CSA CSA EEV UR
Ambient Temperature	40 °C
Auxillary Box	No Auxillary Box
Auxillary Box Lead Termination	None
Base Indicator	Rigid
Bearing Grease Type	Polyrex EM (-20F +300F)
Blower	None
Current @ Voltage	98.000 A @ 230.0 V 99.000 A @ 208.0 V 49.000 A @ 460.0 V
Design Code	A
Drip Cover	No Drip Cover
Duty Rating	CONT
Efficiency @ 100% Load	94.1 %
Electrically Isolated Bearing	Not Electrically Isolated
Feedback Device	NO FEEDBACK
Front Face Code	Standard
Front Shaft Indicator	None
Heater Indicator	No Heater
High Voltage Full Load Amps	49.0 a

## Part detail

Revision	AG
Type	AC
Mech. spec.	40E245
Base	
Status	PRD/A
Elec. spec.	40WGX166
Layout	40LYE245
Eff. date	08-01-2024
CD Diagram	CD0005
Poles	04
Leads	9#8
Proprietary	False
Created date	08-24-2010

Insulation Class	H
Inverter Code	Inverter Ready
KVA Code	H
Lifting Lugs	Standard Lifting Lugs
Locked Bearing Indicator	No Locked Bearing
Motor Lead Exit	Ko Box
Motor Lead Quantity/Wire Size	9 @ 8 AWG
Motor Lead Termination	Flying Leads
Motor Standards	NEMA
Motor Type	4064M
Mounting Arrangement	F1
Number of Poles	4
Overall Length	27.19 IN
Power Factor	82
Product Family	General Purpose
Pulley End Bearing Type	Ball
Pulley Face Code	Standard
Pulley Shaft Indicator	Standard
Rodent Screen	None
Service Factor	1.15
Shaft Diameter	2.125 IN
Shaft Extension Location	Pulley End
Shaft Ground Indicator	Shaft Grounding
Shaft Rotation	Reversible
Shaft Slinger Indicator	No Slinger
Speed	1770 rpm
Speed Code	Single Speed
Starting Method	Direct on line
Thermal Device - Bearing	None
Thermal Device - Winding	None
Vibration Sensor Indicator	No Vibration Sensor
Winding Thermal 1	None
Winding Thermal 2	None

**Nameplate**

NP3554LUA										
<b>CAT.NO.</b>	EM2539T-G			<b>P/N</b>				<b>ENCL</b>		<b>OPSB</b>
<b>SPEC.</b>	40E245X166G1	<b>CC</b>	010A	<b>FRAME</b>		324T	<b>SER.NO.</b>			
<b>HP</b>	40	<b>CLASS</b>		H	<b>HZ</b>	60				
<b>RPM</b>	1770	<b>PH</b>	3	<b>DES</b>		A				
<b>VOLTS</b>	230/460			<b>CODE</b>		H	<b>ODE BRG</b>	6309	<b>DE BRG</b>	6312
<b>AMPS</b>	98/49									
<b>RATING</b>	40C AMB-CONT			<b>NEMA-NOM-EFF</b>			94.1	<b>GREASE</b>	POLYREX EM	
<b>PF</b>	82	<b>SER.F.</b>	1.15	<b>CT30-60(2:1) VT3-60(20:1)</b>						
<b>USABLE AT</b>	50HZ 40HP 190/380V 114/57A			SF1.0						
<b>HTR-VOLTS</b>	<b>HTR-AMPS</b>	<b>MAX. SPACE HEATER TEMP.</b>								

**AC Induction Motor Performance Data**

Record # 35574

Typical performance - not guaranteed values

<b>Winding: 40WGX166-R003</b>		<b>Type: 4064M</b>		<b>Enclosure: OPSB</b>	
<b>Nameplate Data</b>			<b>460 V, 60 Hz: High Voltage Connection</b>		
<b>Rated Output (HP)</b>	40	<b>Full Load Torque</b>	119 LB-FT		
<b>Volts</b>	230/460	<b>Start Configuration</b>	direct on line		
<b>Full Load Amps</b>	98/49	<b>Breakdown Torque</b>	427 LB-FT		
<b>R.P.M.</b>	1770	<b>Pull-up Torque</b>	187 LB-FT		
<b>Hz</b>	60 <b>Phase</b>	3	<b>Locked-rotor Torque</b>	246 LB-FT	
<b>NEMA Design Code</b>	<b>A KVA Code</b>	H	<b>Starting Current</b>	330 A	
<b>Service Factor (S.F.)</b>	1.15		<b>No-load Current</b>	21.1 A	
<b>NEMA Nom. Eff.</b>	94.1	<b>Power Factor</b>	82	<b>Line-line Res. @ 25°C</b>	0.16236 Ω
<b>Rating - Duty</b>	40C AMB-CONT		<b>Temp. Rise @ Rated Load</b>	41°C	
<b>S.F. Amps</b>			<b>Temp. Rise @ S.F. Load</b>	51°C	
			<b>Locked-rotor Power Factor</b>	32	
			<b>Rotor inertia</b>	5.09 LB-FT <sup>2</sup>	

**Load Characteristics 460 V, 60 Hz, 40 HP**

<b>% of Rated Load</b>	<b>25</b>	<b>50</b>	<b>75</b>	<b>100</b>	<b>125</b>	<b>150</b>	<b>S.F.</b>
<b>Power Factor</b>	43	65	76	82	85	85	84
<b>Efficiency</b>	91.1	94	94.5	94.2	93.6	92.8	93.8
<b>Speed</b>	1792.4	1785	1777.8	1770.2	1762.1	1752.8	1765
<b>Line amperes</b>	24.1	30.7	39.2	48.7	59.3	71.3	55.1

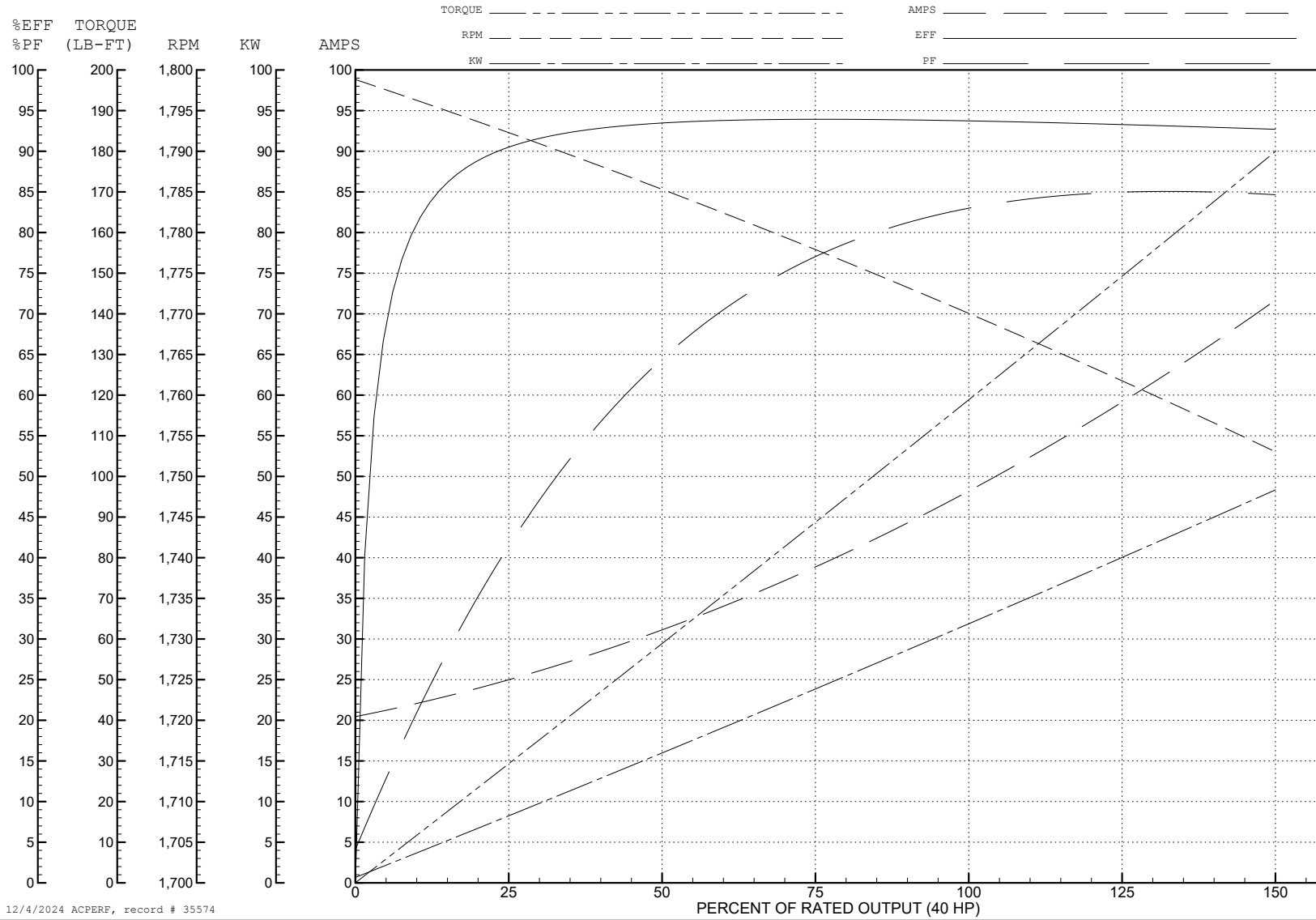
ABB Motors and Mechanical Inc.

WINDING # 40WGX166

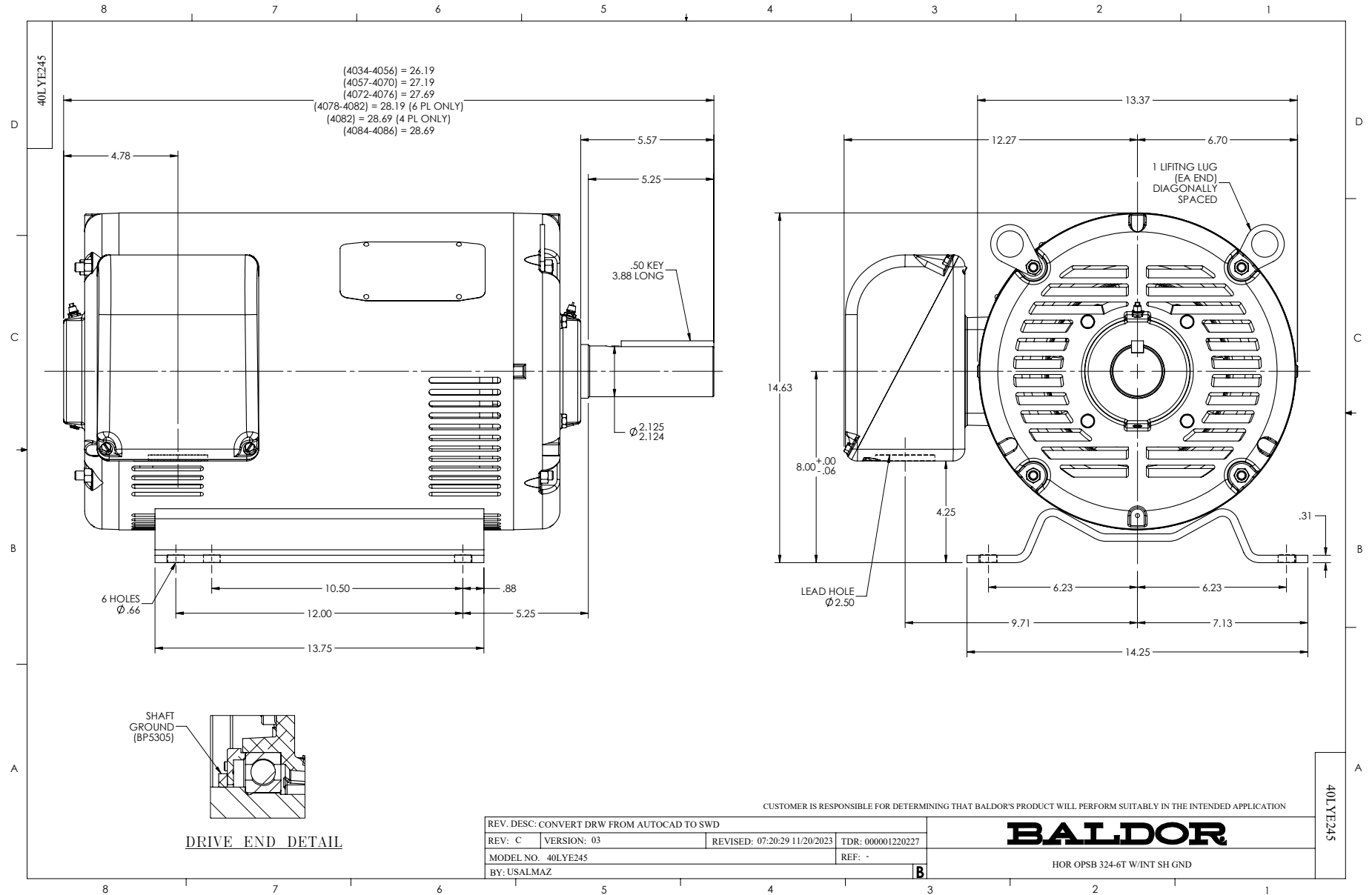
40 HP 3 PH 60 HZ 1770 RPM 460 V 4064M

Typical performance - not guaranteed values.

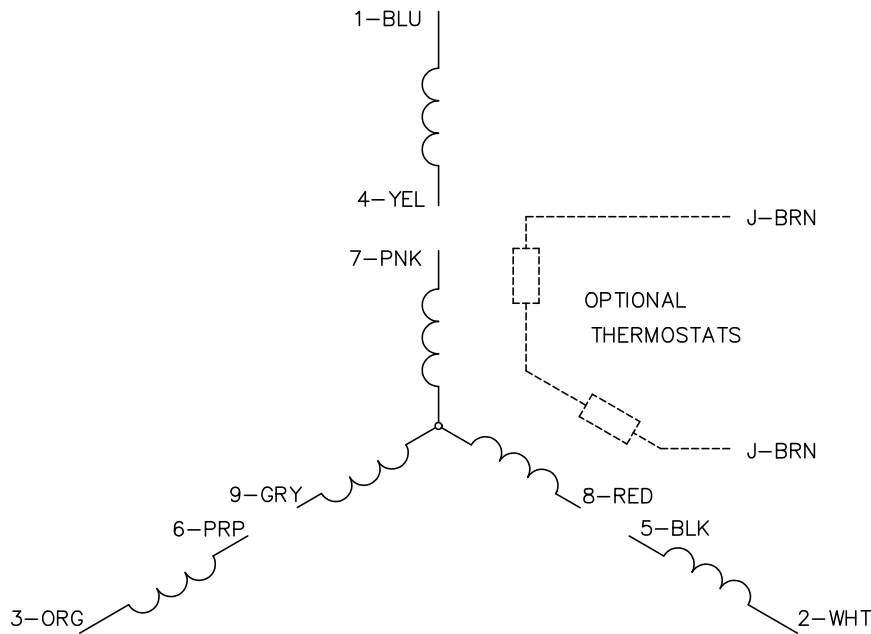
TORQUES (LB-FT): PO=427 PU=187 LR=246 LRA=330



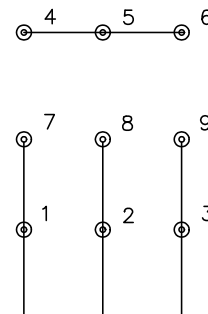
12/4/2024 ACPERF, record # 35574



CD0005

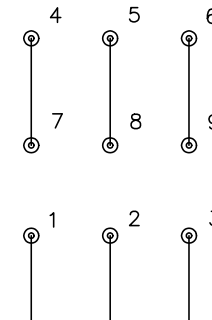


LOW VOLTAGE  
(2Y)



LINE

HIGH VOLTAGE  
(1Y)



LINE

NOTES:

1. INTERCHANGE ANY TWO LINE LEADS TO REVERSE ROTATION.
2. OPTIONAL THERMOSTATS ARE PROVIDED WHEN SPECIFIED.
3. ACTUAL NUMBER OF INTERNAL PARALLEL CIRCUITS MAY BE A MULTIPLE OF THOSE SHOWN ABOVE.
4. LEAD COLORS ARE OPTIONAL. LEADS MUST ALWAYS BE NUMBERED AS SHOWN.

CD0005

REV. DESC: REVISE TO SHOW OPTIONAL COLORS			
REV. LTR: E	BY: JLP	REVISED: 01/19/99 10:15	TDR: 0171435
S00000		FILE: AAA00005140	MDL: -
		MTL: -	

**BALDOR ELECTRIC Co.**

3PH, DV, 9 LEADS