

# **ABB BALDOR RELIANCE III**



## **Customer information packet** EM2535T

30HP, 1775RPM, 3PH, 60HZ, 286T, 4060M, OPSB, F1

**Specifications**

<b>Enclosure</b>	OPSB
<b>Frame</b>	286T
<b>Frame Material</b>	Steel
<b>Frequency</b>	60.00 Hz
<b>Motor Letter Type</b>	Three Phase
<b>Output @ Frequency</b>	30.000 HP @ 60 HZ
<b>Phase</b>	3
<b>Synchronous Speed @ Frequency</b>	1800 RPM @ 60 HZ
<b>Voltage @ Frequency</b>	230.0 V @ 60 HZ 460.0 V @ 60 HZ
<b>Agency Approvals</b>	CURUSEEV NEMA PREMIUM NEMA PREMIUM (OLD LOGO)
<b>Ambient Temperature</b>	40 °C
<b>Auxiliary Box</b>	NO AUXILLARY BOX
<b>Auxiliary Box Lead Termination</b>	None
<b>Base Indicator</b>	Rigid
<b>Bearing Grease Type</b>	Polyrex EM (-20F +300F)
<b>Blower</b>	None
<b>Current @ Voltage</b>	74.000 A @ 230.0 V 77.000 A @ 208.0 V 37.000 A @ 460.0 V
<b>Design Code</b>	A
<b>Drip Cover</b>	No Drip Cover
<b>Duty Rating</b>	CONT
<b>Efficiency @ 100% Load</b>	94.1 %
<b>Electrically Isolated Bearing</b>	Not Electrically Isolated
<b>Feedback Device</b>	NO FEEDBACK
<b>Front Face Code</b>	Standard
<b>Front Shaft Indicator</b>	None
<b>Heater Indicator</b>	No Heater
<b>High Voltage Full Load Amps</b>	37.0 a

**Part Detail**

<b>Revision</b>	W
<b>Type</b>	AC
<b>Mech. spec.</b>	40G48
<b>Base</b>	
<b>Status</b>	PRD/A
<b>Elec. spec.</b>	40WGX339
<b>Layout</b>	40LYG048
<b>Eff. date</b>	09-15-2025
<b>CD Diagram</b>	CD0005
<b>Poles</b>	04
<b>Leads</b>	9#10
<b>Proprietary</b>	False
<b>Created date</b>	03-22-2016

<b>Insulation Class</b>	F
<b>Inverter Code</b>	Inverter Ready
<b>IP Rating</b>	NONE
<b>KVA Code</b>	H
<b>Lifting Lugs</b>	Standard Lifting Lugs
<b>Locked Bearing Indicator</b>	No Locked Bearing
<b>Motor Lead Exit</b>	Ko Box
<b>Motor Lead Quantity/Wire Size</b>	9 @ 10 AWG
<b>Motor Lead Termination</b>	Flying Leads
<b>Motor Standards</b>	NEMA
<b>Motor Type</b>	4060M
<b>Mounting Arrangement</b>	F1
<b>Number of Poles</b>	4
<b>Overall Length</b>	26.06 IN
<b>Power Factor</b>	80
<b>Product Family</b>	General Purpose
<b>Pulley End Bearing Type</b>	Ball
<b>Pulley Face Code</b>	Standard
<b>Pulley Shaft Indicator</b>	Standard
<b>Rodent Screen</b>	None
<b>Service Factor</b>	1.15
<b>Shaft Diameter</b>	1.875 IN
<b>Shaft Extension Location</b>	Pulley End
<b>Shaft Ground Indicator</b>	No Shaft Grounding
<b>Shaft Rotation</b>	Reversible
<b>Shaft Slinger Indicator</b>	No Slinger
<b>Speed</b>	1775 rpm
<b>Speed Code</b>	Single Speed
<b>Starting Method</b>	Direct on line
<b>Thermal Device - Bearing</b>	None
<b>Thermal Device - Winding</b>	None
<b>Vibration Sensor Indicator</b>	No Vibration Sensor
<b>Winding Thermal 1</b>	None
<b>Winding Thermal 2</b>	None

**Nameplate**

<b>NP3554LUA</b>									
<b>CAT.NO.</b>	EM2535T			<b>P/N</b>				<b>ENCL</b>	OPSB
<b>SPEC.</b>	40G048X339	<b>CC</b>	010A	<b>FRAME</b>	286T		<b>SER.NO.</b>		
<b>HP</b>	30		<b>CLASS</b>	F	<b>HZ</b>	60			
<b>RPM</b>	1775		<b>PH</b>	3	<b>DES</b>	A			
<b>VOLTS</b>	230/460		<b>CODE</b>	H	<b>ODE BRG</b>	6309	<b>DE BRG</b>	6311	
<b>AMPS</b>	74/37								
<b>RATING</b>	40C AMB-CONT		<b>NEMA-NOM-EFF</b>	94.1	<b>GREASE</b>	POLYREX EM			
<b>PF</b>	80	<b>SER.F.</b>	1.15		<b>CT30-60(2:1) VT3-60(20:1)</b>				
<b>USABLE AT</b>	50HZ 30HP 190/380V 86/43A			SF 1.0					
<b>HTR-VOLTS</b>	<b>HTR-AMPS</b>		<b>MAX. SPACE HEATER TEMP.</b>						

**Accessories**

<b>Part number</b>	<b>Description</b>	<b>Multiplier</b>
40-1400	C FACE KIT	A8

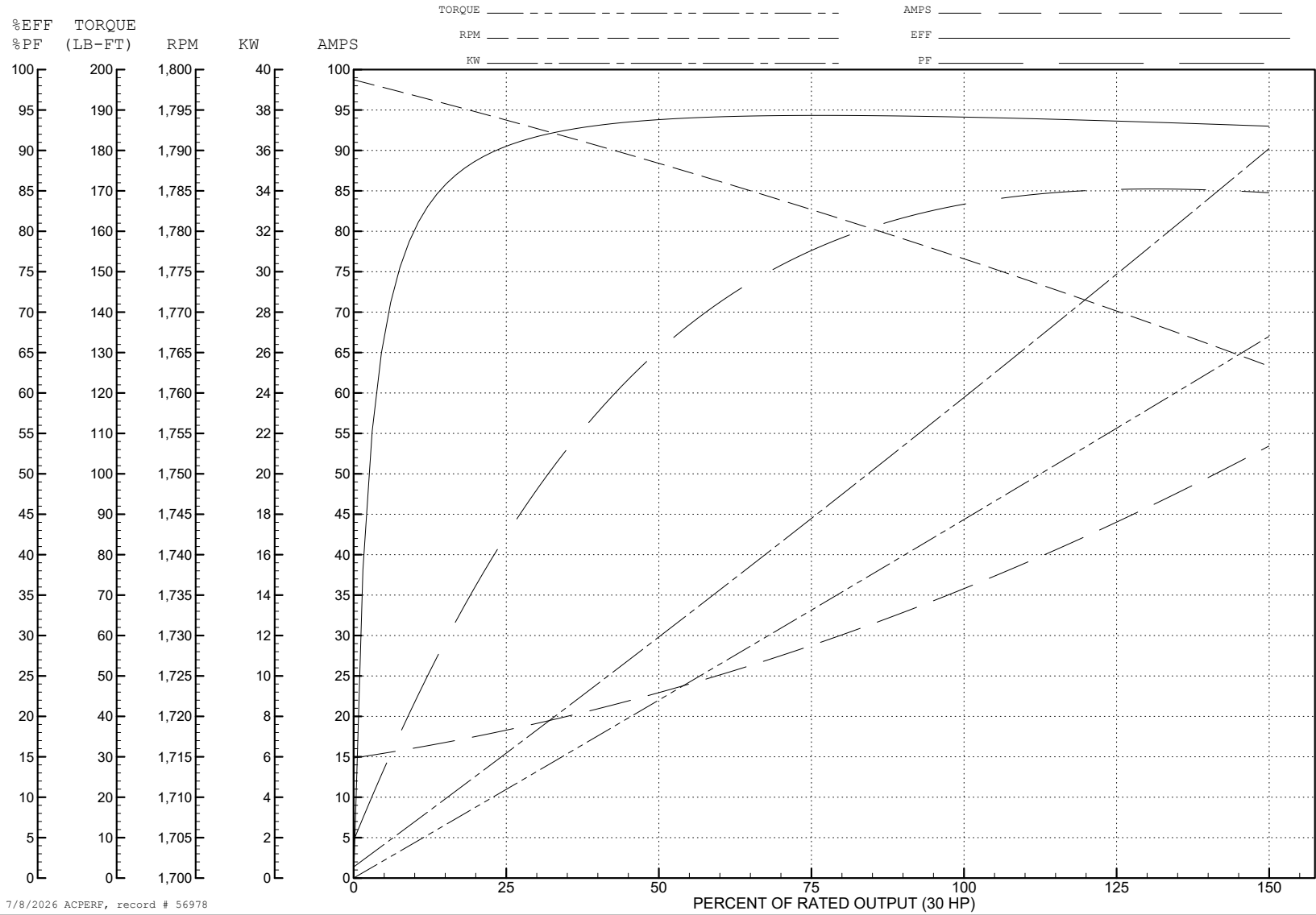
ABB Motors and Mechanical Inc.

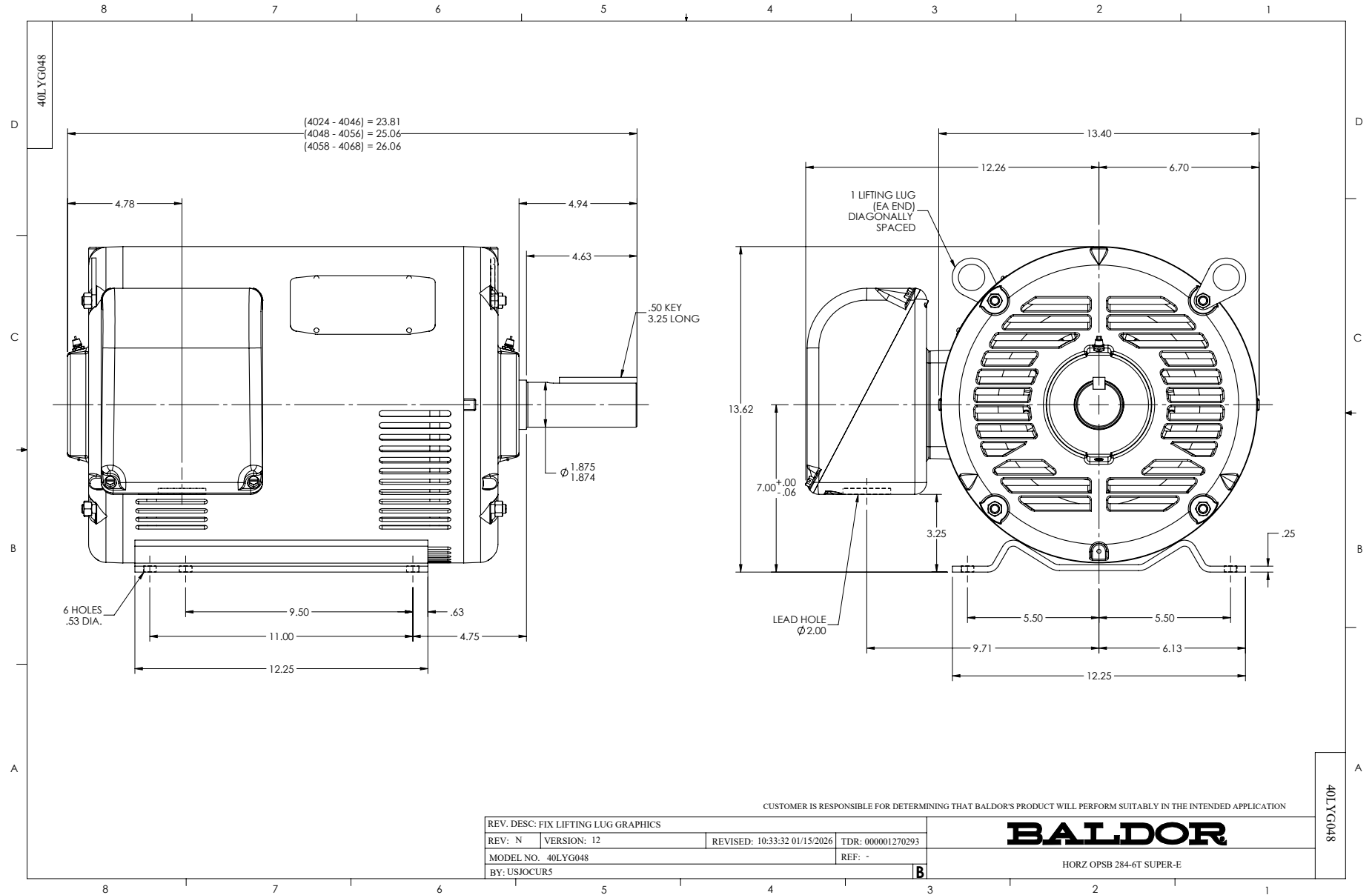
WINDING # 40WGx339

Typical performance - not guaranteed values.

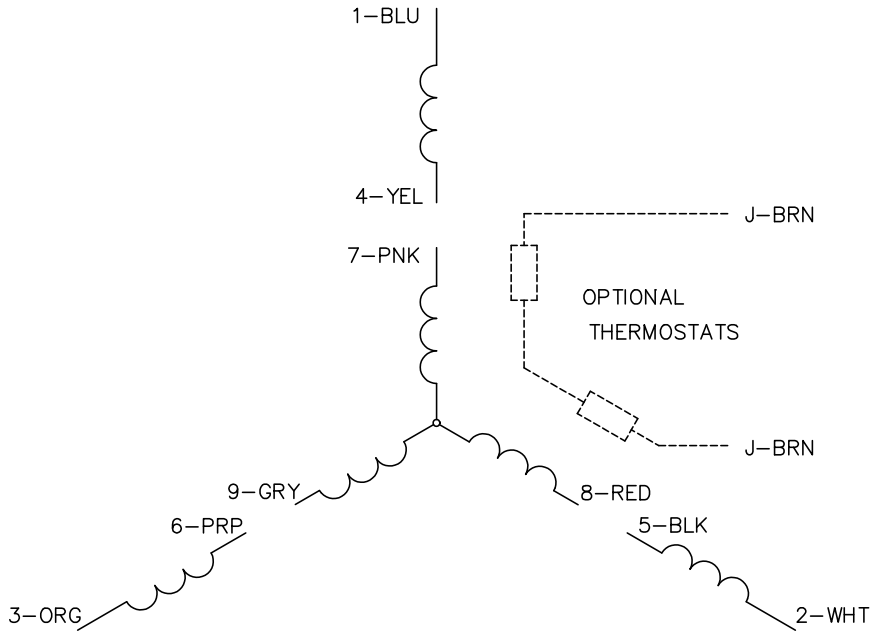
30 HP 3 PH 60 HZ 1775 RPM 460 V 4060M

TORQUES (LB-FT): PO=280 PU=130 LR=161 LRA=252





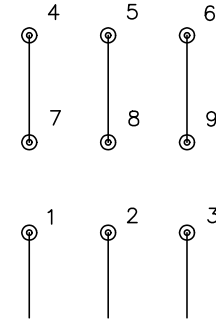
CD0005



LOW VOLTAGE  
(2Y)



HIGH VOLTAGE  
(1Y)



NOTES:

1. INTERCHANGE ANY TWO LINE LEADS TO REVERSE ROTATION.
2. OPTIONAL THERMOSTATS ARE PROVIDED WHEN SPECIFIED.
3. ACTUAL NUMBER OF INTERNAL PARALLEL CIRCUITS MAY BE A MULTIPLE OF THOSE SHOWN ABOVE.
4. LEAD COLORS ARE OPTIONAL. LEADS MUST ALWAYS BE NUMBERED AS SHOWN.

CD0005

REV. DESC: REVISE TO SHOW OPTIONAL COLORS

REV. LTR: E BY: JLP REVISED: 01/19/99 10:15 TDR: 0171435

500000

FILE: AAA00005140

MDL: -

MTL: -

**BALDOR ELECTRIC Co.**

3PH, DV, 9 LEADS