

ABB BALDOR RELIANCE III

Customer information packet EM2535T-8G

30HP, 1775RPM, 3PH, 60HZ, 286T, 4060M, OPSB, N

Specifications

Enclosure	OPSB
Frame	286T
Frame Material	Steel
Frequency	60.00 Hz
Motor Letter Type	Three Phase
Output @ Frequency	30.000 HP @ 60 HZ
Phase	3
Synchronous Speed @ Frequency	1800 RPM @ 60 HZ
Voltage @ Frequency	200.0 V @ 60 HZ
Agency Approvals	CSA CSA EEV NEMA PREMIUM UR
Ambient Temperature	40 °C
Auxiliary Box	NO AUXILLARY BOX
Auxiliary Box Lead Termination	None
Base Indicator	Rigid
Bearing Grease Type	Polyrex EM (-20F +300F)
Blower	None
Current @ Voltage	83.000 A @ 200.0 V 83.000 A @ 208.0 V
Design Code	A
Drip Cover	No Drip Cover
Duty Rating	CONT
Efficiency @ 100% Load	94.1 %
Electrically Isolated Bearing	Not Electrically Isolated
Feedback Device	NO FEEDBACK
Front Shaft Indicator	None
Heater Indicator	No Heater
High Voltage Full Load Amps	83.0 a
Insulation Class	H
Inverter Code	Inverter Ready

Part Detail

Revision	E
Type	AC
Mech. spec.	40E246
Base	
Status	PRD/A
Elec. spec.	40WGX451
Layout	40LYE246
Eff. date	06-27-2024
CD Diagram	CD0695
Poles	04
Leads	6#6
Proprietary	False
Created date	07-07-2021

KVA Code	H
Lifting Lugs	Standard Lifting Lugs
Locked Bearing Indicator	No Locked Bearing
Motor Lead Quantity/Wire Size	6 @ 6 AWG
Motor Lead Termination	Flying Leads
Motor Standards	NEMA
Motor Type	4060M
Mounting Arrangement	F1
Number of Poles	4
Overall Length	26.06 IN
Power Factor	82
Product Family	General Purpose
Pulley End Bearing Type	Ball
Pulley Face Code	Standard
Pulley Shaft Indicator	Standard
Rodent Screen	None
Service Factor	1.15
Shaft Diameter	1.875 IN
Shaft Ground Indicator	Shaft Grounding
Shaft Rotation	Reversible
Shaft Slinger Indicator	No Slinger
Speed	1775 rpm
Speed Code	Single Speed
Starting Method	Part Winding
Thermal Device - Bearing	None
Thermal Device - Winding	None
Vibration Sensor Indicator	No Vibration Sensor
Winding Thermal 1	None
Winding Thermal 2	None

Nameplate

NP3554L

CAT.NO.	EM2535T-8G		P/N			ENCL	OPSB
SPEC.	40E246X451G1	CC	010A	FRAME	286T	SER.NO.	
HP	30	CLASS	H	HZ	60		
RPM	1775	PH	3	DES	A		
VOLTS	200	CODE	H	ODE BRG	6309	DE BRG	6311
AMPS	83						
RATING	40C AMB-CONT	NEMA-NOM-EFF	94.1	GREASE	POLYREX EM		
PF	82	SER.F.	1.15	VPWM INVERTER READY			
HTR-VOLTS	HTR-AMPS	MAX. SPACE HEATER TEMP.					

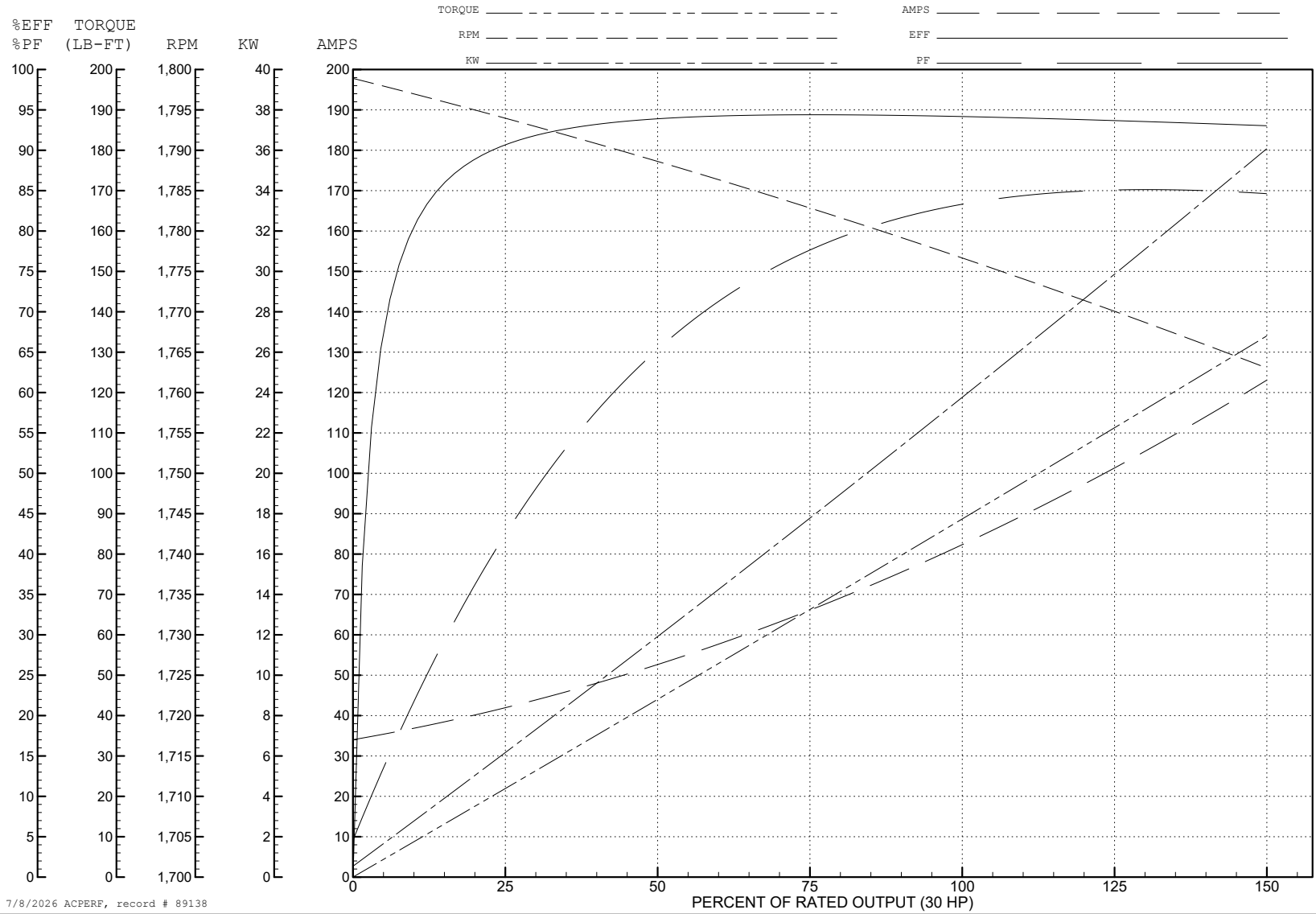
ABB Motors and Mechanical Inc.

WINDING # 40WGx451

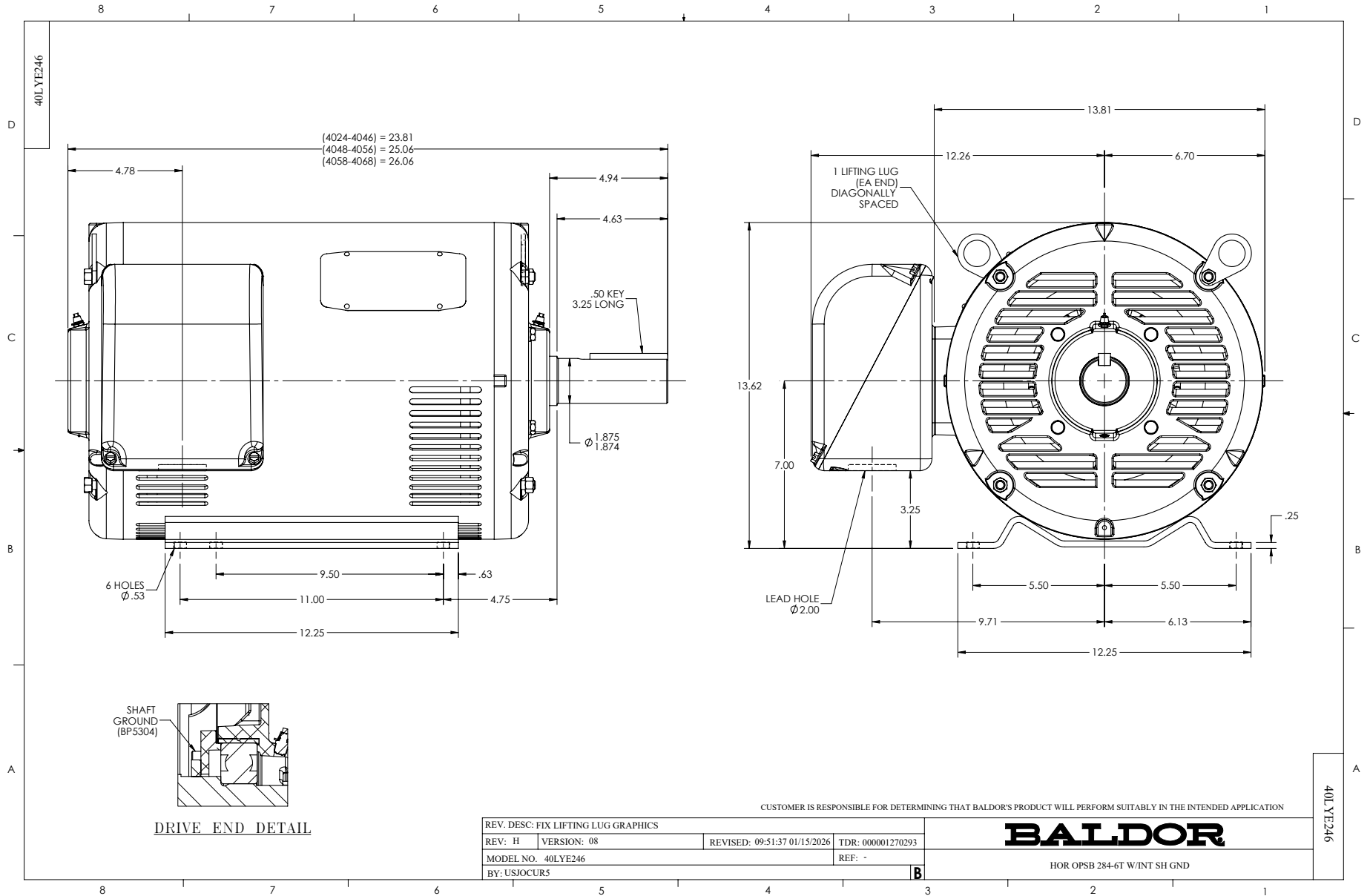
Typical performance - not guaranteed values.

30 HP 3 PH 60 HZ 1775 RPM 200 V 4060M

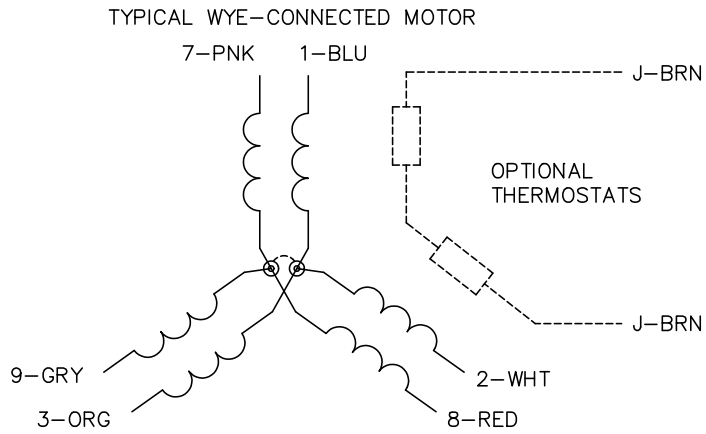
TORQUES (LB-FT): PO=281 PU=131 LR=162 LRA=581



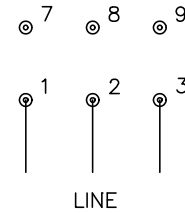
7/8/2026 ACPERF, record # 89138



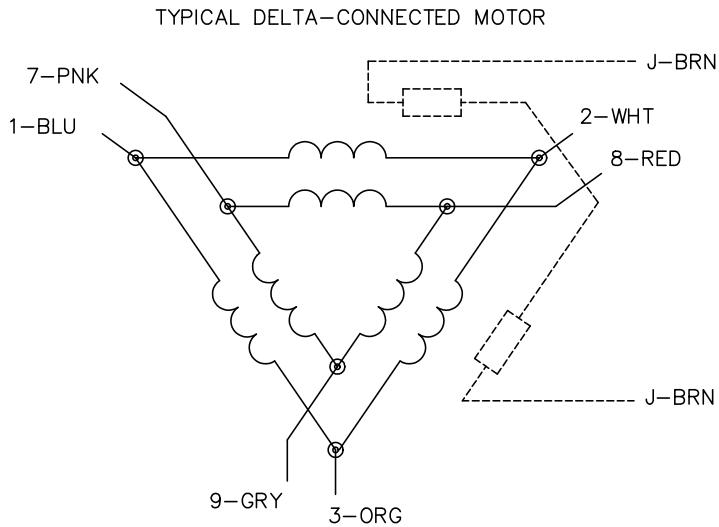
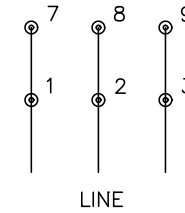
CD0695



START CONNECTION



RUN CONNECTION



NOTES:

1. MOTOR MAY BE WYE CONNECTED OR DELTA CONNECTED.
2. INTERCHANGE ANY TWO LINE LEADS TO REVERSE ROTATION.
3. OPTIONAL THERMOSTATS ARE PROVIDED WHEN SPECIFIED.
4. ACTUAL NUMBER OF INTERNAL PARALLEL CIRCUITS MAY VARY.
5. LEAD COLORS ARE OPTIONAL. LEADS MUST ALWAYS BE NUMBERED AS SHOWN.

CD0695

REV. DESC: REVISE TO SHOW OPTIONAL COLORS

REV. LTR: C BY: JLP REVISED: 01/21/99 3:19 TDR: 0171435

S69000

FILE: AAA00005151

MDL: -

MTL: -

BALDOR ELECTRIC Co.

3PH, SV, 6 LEADS, PART WINDING START