

BALDOR • RELIANCE

Customer information packet

EM2535T-8

30HP, 1775RPM, 3PH, 60HZ, 286T, 4060M, OPSB, N

Specifications

Enclosure	OPSB
Frame	286T
Frame Material	Steel
Frequency	60.00 Hz
Motor Letter Type	Three Phase
Output @ Frequency	30.000 HP @ 60 HZ
Phase	3
Synchronous Speed @ Frequency	1800 RPM @ 60 HZ
Voltage @ Frequency	200.0 V @ 60 HZ
Agency Approvals	CSA EEV NEMA PREMIUM NEMA_PREMIUM UR
Ambient Temperature	40 °C
Auxillary Box	No Auxillary Box
Auxillary Box Lead Termination	None
Base Indicator	Rigid
Bearing Grease Type	Polyrex EM (-20F +300F)
Blower	None
Current @ Voltage	83.000 A @ 200.0 V 83.000 A @ 208.0 V
Design Code	A
Drip Cover	No Drip Cover
Duty Rating	CONT
Efficiency @ 100% Load	94.1 %
Electrically Isolated Bearing	Not Electrically Isolated
Feedback Device	NO FEEDBACK
Front Shaft Indicator	None
Heater Indicator	No Heater
High Voltage Full Load Amps	83.0 a
Insulation Class	F
Inverter Code	Inverter Ready

Part detail

Revision	C
Type	AC
Mech. spec.	40G48
Base	
Status	PRD/A
Elec. spec.	40WGX451
Layout	40LYG048
Eff. date	02-12-2024
CD Diagram	CD0695
Poles	04
Leads	6#6
Proprietary	False
Created date	07-07-2021

KVA Code	H
Lifting Lugs	Standard Lifting Lugs
Locked Bearing Indicator	No Locked Bearing
Motor Lead Quantity/Wire Size	6 @ 6 AWG
Motor Lead Termination	Flying Leads
Motor Standards	NEMA
Motor Type	4060M
Mounting Arrangement	F1
Number of Poles	4
Overall Length	26.06 IN
Power Factor	82
Product Family	General Purpose
Pulley End Bearing Type	Ball
Pulley Face Code	Standard
Pulley Shaft Indicator	Standard
Rodent Screen	None
Service Factor	1.15
Shaft Diameter	1.875 IN
Shaft Ground Indicator	No Shaft Grounding
Shaft Rotation	Reversible
Shaft Slinger Indicator	No Slinger
Speed	1775 rpm
Speed Code	Single Speed
Starting Method	Part Winding
Thermal Device - Bearing	None
Thermal Device - Winding	None
Vibration Sensor Indicator	No Vibration Sensor
Winding Thermal 1	None
Winding Thermal 2	None

Nameplate

NP2138L

CAT.NO.	EM2535T-8	P/N		ENCLOSURE	OPSB		
SPEC.	40G048X451	CC	010A	FRAME	286T	S/N	
HP	30	CLASS	F	HZ	60		
RPM	1775	PH	3	DES	A		
VOLT	200	KVA-CODE	H	ODE BRG	6309	DE BRG	6311
AMP	83						
RATING	40C AMB-CONT	GREASE	POLYREX EM				
NEMA-NOM-EFF	94.1	PF	82	SER.F.	1.15		
HTR-VOLTS		HTR-AMPS					

Accessories

Part number	Description	Multiplier
40-1400	C FACE KIT	A8

AC Induction Motor Performance Data

Record # 89137

Typical performance - not guaranteed values

Winding: 40WGX451-R001		Type: 4060M		Enclosure: OPSB	
Nameplate Data			200 V, 60 Hz: Single Voltage Motor		
Rated Output (HP)	30	Full Load Torque	88.7 LB-FT		
Volts	200	Start Configuration	direct on line		
Full Load Amps	83	Breakdown Torque	281 LB-FT		
R.P.M.	1775	Pull-up Torque	131 LB-FT		
Hz	60 Phase	3	Locked-rotor Torque	162 LB-FT	
NEMA Design Code	A	KVA Code	H	Starting Current	581 A
Service Factor (S.F.)	1.15		No-load Current	35.3 A	
NEMA Nom. Eff.	94.1	Power Factor	82	Line-line Res. @ 25°C	0.0382 Ω
Rating - Duty	40C AMB-CONT		Temp. Rise @ Rated Load	29°C	
S.F. Amps			Temp. Rise @ S.F. Load	36°C	
			Locked-rotor Power Factor	31.2768	
			Rotor inertia	4.77 lb-ft ²	

Load Characteristics 200 V, 60 Hz, 30 HP

% of Rated Load	25	50	75	100	125	150	S.F.
Power Factor	44	67	77	82	84	85	83
Efficiency	90.5	93.9	94.5	94.3	93.5	93.1	93.8
Speed	1794	1788	1783	1777	1770	1763	1773
Line amperes	40.6	51.6	66.7	83.4	102	122	94.6

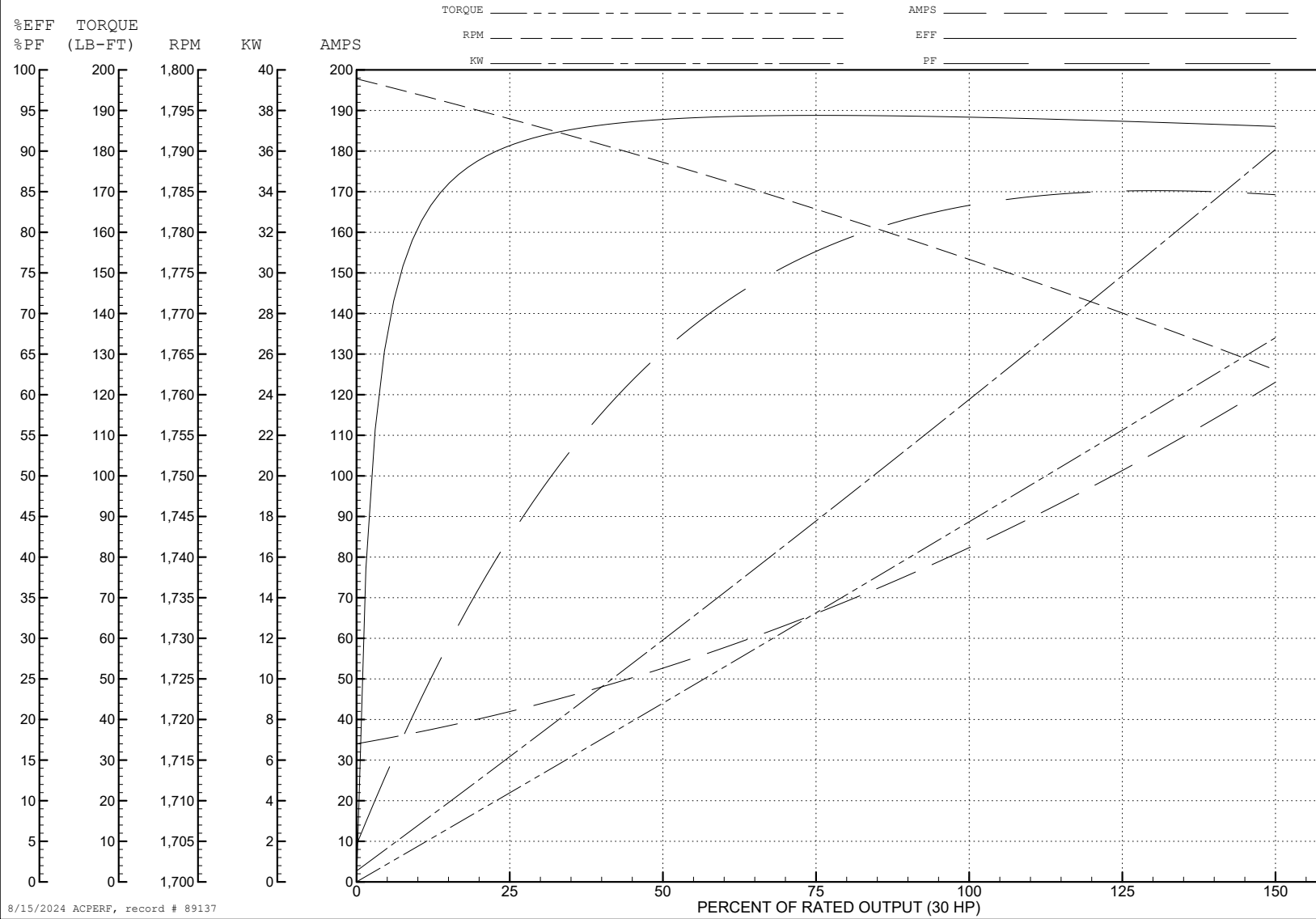
ABB Motors and Mechanical Inc.

WINDING # 40WGX451

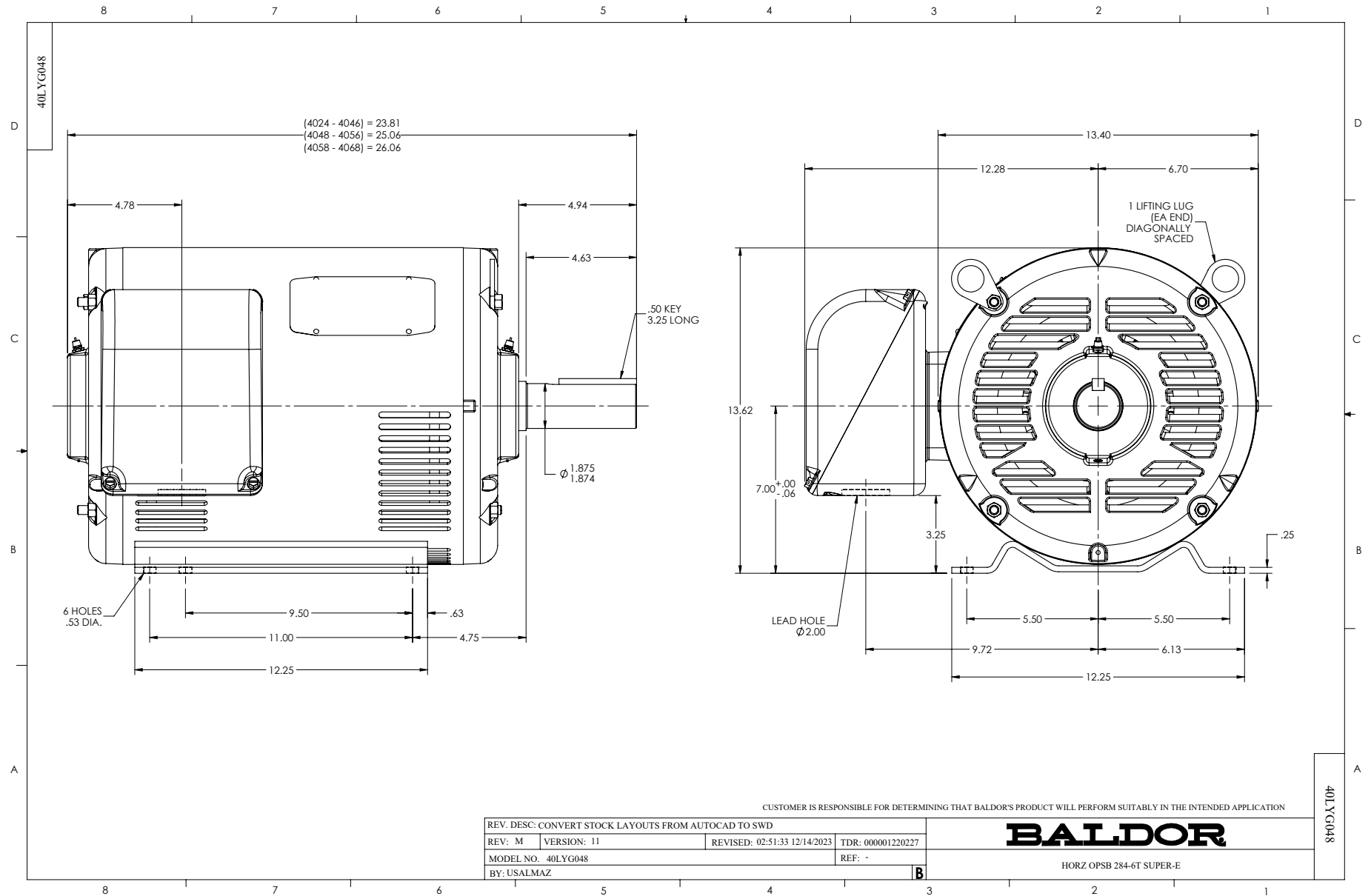
Typical performance - not guaranteed values.

30 HP 3 PH 60 HZ 1775 RPM 200 V 4060M

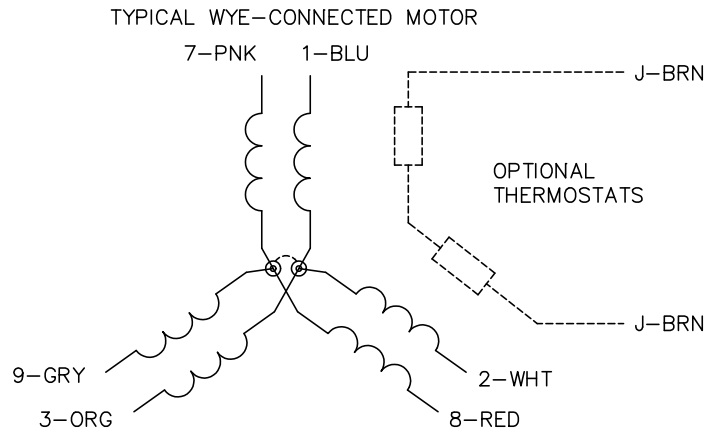
TORQUES (LB-FT): PO=281 PU=131 LR=162 LRA=581



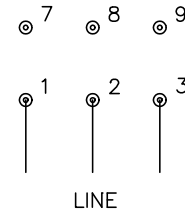
8/15/2024 ACPERF, record # 89137



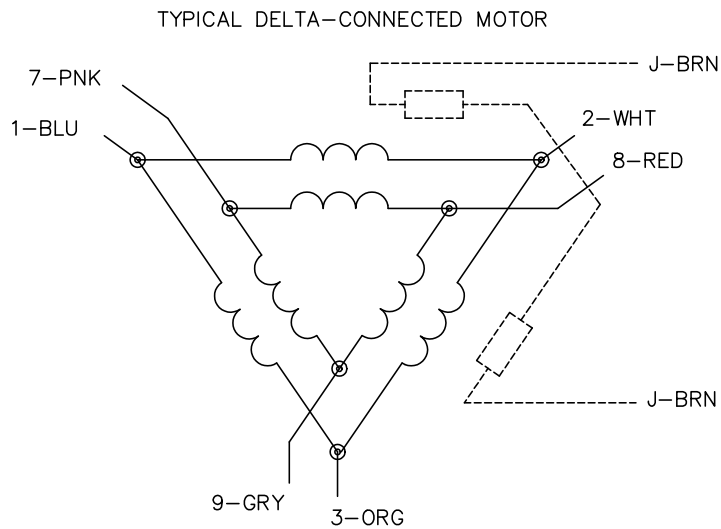
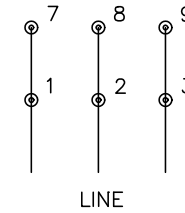
CD0695



START CONNECTION



RUN CONNECTION



NOTES:

1. MOTOR MAY BE WYE CONNECTED OR DELTA CONNECTED.
2. INTERCHANGE ANY TWO LINE LEADS TO REVERSE ROTATION.
3. OPTIONAL THERMOSTATS ARE PROVIDED WHEN SPECIFIED.
4. ACTUAL NUMBER OF INTERNAL PARALLEL CIRCUITS MAY VARY.
5. LEAD COLORS ARE OPTIONAL. LEADS MUST ALWAYS BE NUMBERED AS SHOWN.

CD0695

REV. DESC: REVISE TO SHOW OPTIONAL COLORS			
REV. LTR: C	BY: JLP	REVISED: 01/21/99 3:19	TDR: 0171435
S69000		FILE: AAA00005151	MDL: -
		MTL: -	

BALDOR ELECTRIC Co.

3PH, SV, 6 LEADS, PART WINDING START