

ABB BALDOR RELIANCE III



Customer information packet

EM2534T-8

30HP, 3530RPM, 3PH, 60HZ, 284TS, 4040M, OPSB, F

Copyright © All product information within this document is subject to ABB Motors and Mechanical Inc. copyright © protection, unless otherwise noted.

7/8/2026 8:24:29 PM

Specifications

Enclosure	OPSB
Frame	284TS
Frame Material	Steel
Frequency	60.00 Hz
Motor Letter Type	Three Phase
Output @ Frequency	30.000 HP @ 60 HZ
Phase	3
Synchronous Speed @ Frequency	3600 RPM @ 60 HZ
Voltage @ Frequency	200.0 V @ 60 HZ
Agency Approvals	CURUSEEV NEMA PREMIUM (OLD LOGO) NEMA PREMIUM
Ambient Temperature	40 °C
Auxiliary Box	NO AUXILLARY BOX
Auxiliary Box Lead Termination	None
Base Indicator	Rigid
Bearing Grease Type	Polyrex EM (-20F +300F)
Blower	None
Current @ Voltage	78.000 A @ 208.0 V 80.000 A @ 200.0 V
Design Code	A
Drip Cover	No Drip Cover
Duty Rating	CONT
Efficiency @ 100% Load	91.7 %
Electrically Isolated Bearing	Not Electrically Isolated
Feedback Device	NO FEEDBACK
Front Face Code	Standard
Front Shaft Indicator	None
Heater Indicator	No Heater
High Voltage Full Load Amps	80.0 a
Insulation Class	F
Inverter Code	Inverter Ready

Part Detail

Revision	K
Type	AC
Mech. spec.	40G49
Base	
Status	PRD/A
Elec. spec.	40WGX310
Layout	40LYG049
Eff. date	06-27-2024
CD Diagram	CD0695
Poles	02
Leads	6#6
Proprietary	False
Created date	08-12-2015

IP Rating	NONE
KVA Code	G
Lifting Lugs	Standard Lifting Lugs
Locked Bearing Indicator	No Locked Bearing
Motor Lead Exit	Ko Box
Motor Lead Quantity/Wire Size	6 @ 6 AWG
Motor Lead Termination	Flying Leads
Motor Standards	NEMA
Motor Type	4040M
Mounting Arrangement	F1
Number of Poles	2
Overall Length	22.44 IN
Power Factor	87
Product Family	General Purpose
Pulley End Bearing Type	Ball
Pulley Face Code	Standard
Pulley Shaft Indicator	Standard
Rodent Screen	None
Service Factor	1.15
Shaft Diameter	1.625 IN
Shaft Extension Location	Pulley End
Shaft Ground Indicator	No Shaft Grounding
Shaft Rotation	Reversible
Shaft Slinger Indicator	No Slinger
Speed	3530 rpm
Speed Code	Single Speed
Starting Method	Part Winding
Thermal Device - Bearing	None
Thermal Device - Winding	None
Vibration Sensor Indicator	No Vibration Sensor
Winding Thermal 1	None
Winding Thermal 2	None

Nameplate

NP3554L										
CAT.NO.	EM2534T-8			P/N				ENCL		OPSB
SPEC.	40G049X310G1	CC	010A	FRAME	284TS		SER.NO.			
HP	30		CLASS	F	HZ	60				
RPM	3530		PH	3	DES	A				
VOLTS	200		CODE	G	ODE BRG	6309	DE BRG	6311		
AMPS	80									
RATING	40C AMB-CONT		NEMA-NOM-EFF	91.7	GREASE	POLYREX EM				
PF	87	SER.F.	1.15	VPWM INVERTER READY						
HTR-VOLTS	HTR-AMPS		MAX. SPACE HEATER TEMP.							

Accessories

Part number	Description	Multiplier
40-1400	C FACE KIT	A8

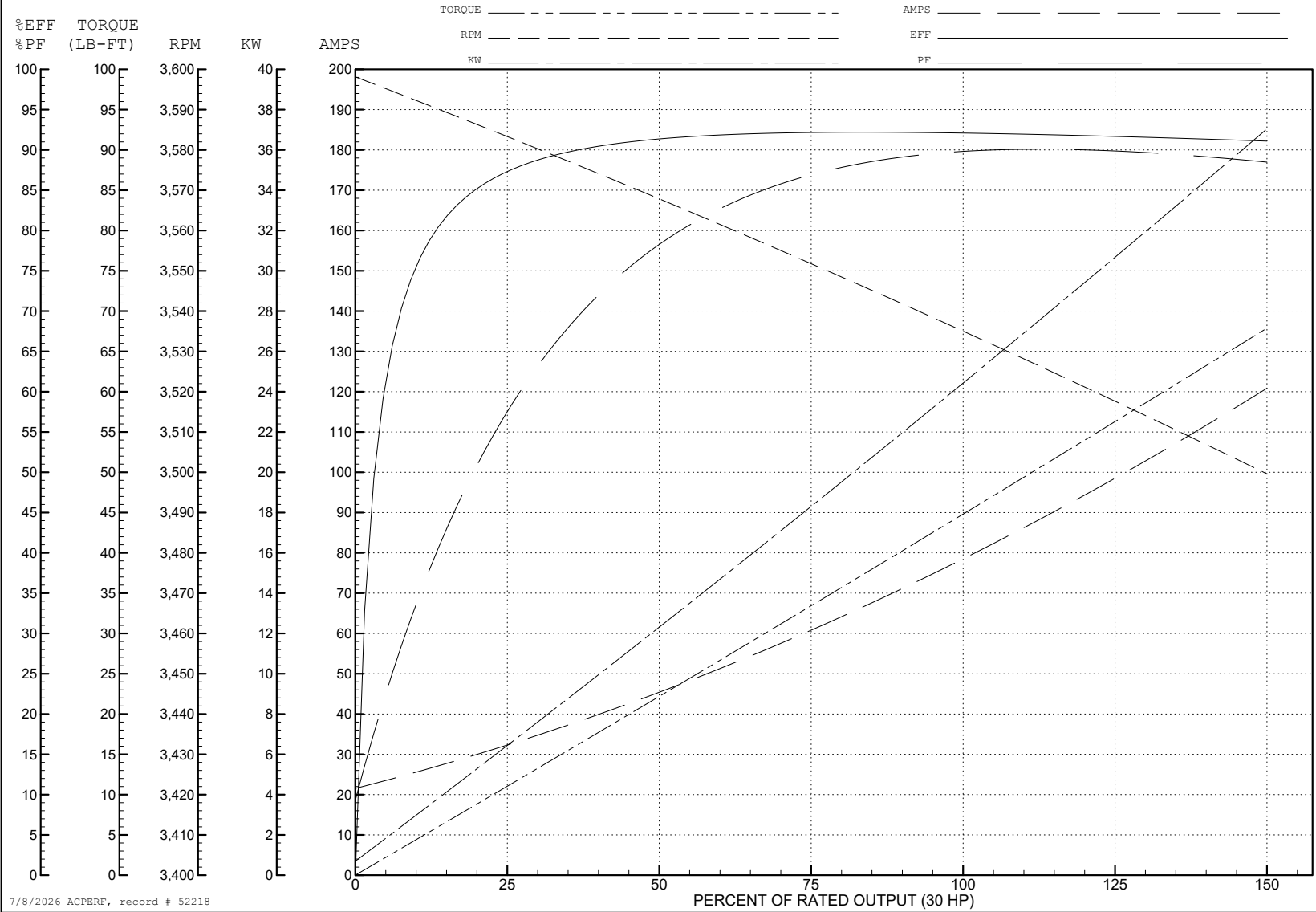
ABB Motors and Mechanical Inc.

WINDING # 40WGx310

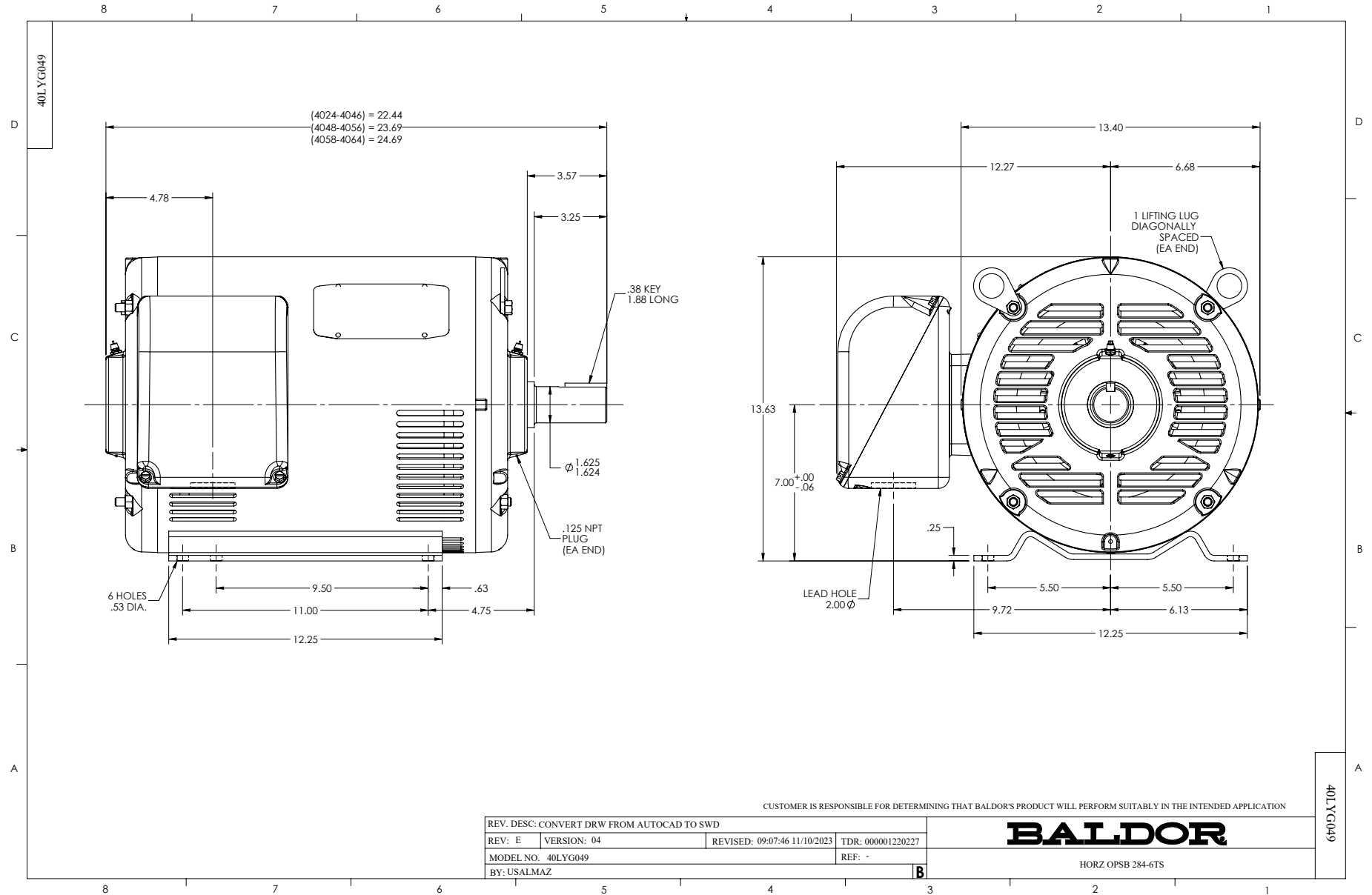
30 HP 3 PH 60 HZ 3530 RPM 200 V 4040M

Typical performance - not guaranteed values.

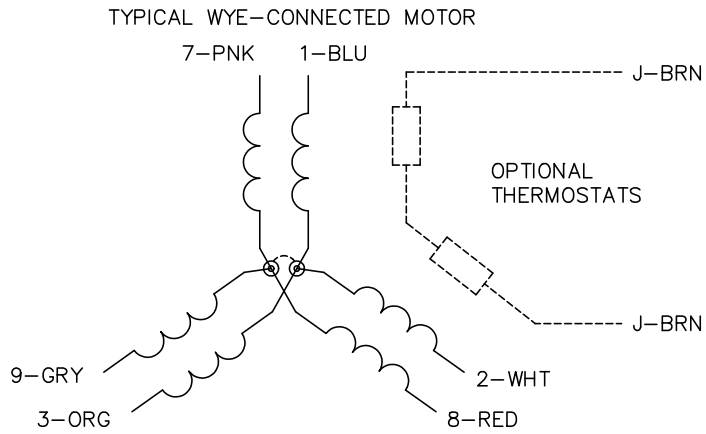
TORQUES (LB-FT): PO=165 PU=55.6 LR=73.4 LRA=518



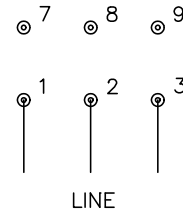
7/8/2026 ACPERF, record # 52218



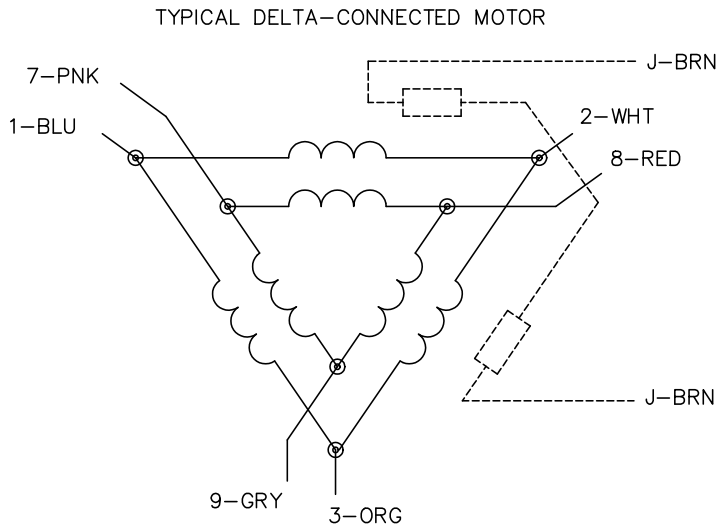
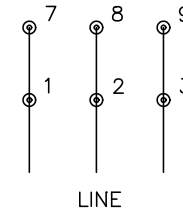
CD0695



START CONNECTION



RUN CONNECTION



NOTES:

1. MOTOR MAY BE WYE CONNECTED OR DELTA CONNECTED.
2. INTERCHANGE ANY TWO LINE LEADS TO REVERSE ROTATION.
3. OPTIONAL THERMOSTATS ARE PROVIDED WHEN SPECIFIED.
4. ACTUAL NUMBER OF INTERNAL PARALLEL CIRCUITS MAY VARY.
5. LEAD COLORS ARE OPTIONAL. LEADS MUST ALWAYS BE NUMBERED AS SHOWN.

CD0695

REV. DESC: REVISE TO SHOW OPTIONAL COLORS

REV. LTR: C

BY: JLP

REVISED: 01/21/99 3:19

TDR: 0171435

S69000

FILE: AAA00005151

MDL: -

MTL: -

BALDOR ELECTRIC Co.

3PH, SV, 6 LEADS, PART WINDING START