

**BALDOR • RELIANCE**

---

# Customer information packet

## EM2531T-BG

25HP, 1775RPM, 3PH, 60HZ, 284T, 4050M, OPSB, F1

## Specifications

Enclosure	OPSB
Frame	284T
Frame Material	Steel
Frequency	60.00 Hz
Motor Letter Type	Three Phase
Output @ Frequency	25.000 HP @ 60 HZ
Phase	3
Synchronous Speed @ Frequency	1800 RPM @ 60 HZ
Voltage @ Frequency	460.0 V @ 60 HZ 230.0 V @ 60 HZ
Agency Approvals	CSA CSA EEV NEMA PREMIUM UR
Ambient Temperature	40 °C
Auxillary Box	No Auxillary Box
Auxillary Box Lead Termination	None
Base Indicator	Rigid
Bearing Grease Type	Polyrex EM (-20F +300F)
Blower	None
Current @ Voltage	64.000 A @ 208.0 V 60.000 A @ 230.0 V 30.000 A @ 460.0 V
Design Code	A
Drip Cover	No Drip Cover
Duty Rating	CONT
Efficiency @ 100% Load	93.6 %
Electrically Isolated Bearing	Not Electrically Isolated
Feedback Device	NO FEEDBACK
Front Shaft Indicator	None
Heater Indicator	No Heater
High Voltage Full Load Amps	30.0 a

## Part detail

Revision	G
Type	AC
Mech. spec.	40E332
Base	
Status	PRD/A
Elec. spec.	40WGX806
Layout	40LYE332
Eff. date	06-27-2024
CD Diagram	CD0005
Poles	04
Leads	9#10
Proprietary	False
Created date	02-10-2021

<b>Insulation Class</b>	H
<b>Inverter Code</b>	Inverter Ready
<b>KVA Code</b>	G
<b>Lifting Lugs</b>	Standard Lifting Lugs
<b>Locked Bearing Indicator</b>	No Locked Bearing
<b>Motor Lead Quantity/Wire Size</b>	9 @ 10 AWG
<b>Motor Lead Termination</b>	Flying Leads
<b>Motor Standards</b>	NEMA
<b>Motor Type</b>	4050M
<b>Mounting Arrangement</b>	F1
<b>Number of Poles</b>	4
<b>Overall Length</b>	25.06 IN
<b>Power Factor</b>	82
<b>Product Family</b>	General Purpose
<b>Pulley End Bearing Type</b>	Ball
<b>Pulley Face Code</b>	Standard
<b>Pulley Shaft Indicator</b>	Standard
<b>Rodent Screen</b>	None
<b>Service Factor</b>	1.15
<b>Shaft Diameter</b>	1.875 IN
<b>Shaft Ground Indicator</b>	Shaft Grounding
<b>Shaft Rotation</b>	Reversible
<b>Shaft Slinger Indicator</b>	No Slinger
<b>Speed</b>	1775 rpm
<b>Speed Code</b>	Single Speed
<b>Starting Method</b>	Direct on line
<b>Thermal Device - Bearing</b>	None
<b>Thermal Device - Winding</b>	None
<b>Vibration Sensor Indicator</b>	No Vibration Sensor
<b>Winding Thermal 1</b>	None
<b>Winding Thermal 2</b>	None

**Nameplate**

NP3554LUA										
<b>CAT.NO.</b>	EM2531T-BG			<b>P/N</b>				<b>ENCL</b>		<b>OPSB</b>
<b>SPEC.</b>	40E332X806G1	<b>CC</b>	010A	<b>FRAME</b>		284T	<b>SER.NO.</b>			
<b>HP</b>	25	<b>CLASS</b>		H	<b>HZ</b>	60				
<b>RPM</b>	1775	<b>PH</b>	3	<b>DES</b>		A				
<b>VOLTS</b>	230/460			<b>CODE</b>		G	<b>ODE BRG</b>	6309	<b>DE BRG</b>	6311
<b>AMPS</b>	60/30									
<b>RATING</b>	40C AMB-CONT			<b>NEMA-NOM-EFF</b>		93.6	<b>GREASE</b>	POLYREX EM		
<b>PF</b>	82	<b>SER.F.</b>	1.15	<b>CT30-60(2:1) VT3-60(20:1)</b>						
<b>USABLE AT</b>	50HZ 25HP 190/380V 72/36A			SF1.0						
<b>HTR-VOLTS</b>	<b>HTR-AMPS</b>	<b>MAX. SPACE HEATER TEMP.</b>								

**AC Induction Motor Performance Data**

Record # 86830

Typical performance - not guaranteed values

<b>Winding: 40WGX806-R002</b>		<b>Type: 4050M</b>		<b>Enclosure: OPSB</b>	
<b>Nameplate Data</b>			<b>460 V, 60 Hz: High Voltage Connection</b>		
<b>Rated Output (HP)</b>	25		<b>Full Load Torque</b>	73.81 LB-FT	
<b>Volts</b>	230/460		<b>Start Configuration</b>	direct on line	
<b>Full Load Amps</b>	60/30		<b>Breakdown Torque</b>	232 LB-FT	
<b>R.P.M.</b>	1775		<b>Pull-up Torque</b>	116 LB-FT	
<b>Hz</b>	60	<b>Phase</b>	3	<b>Locked-rotor Torque</b>	133 LB-FT
<b>NEMA Design Code</b>	A		<b>KVA Code</b>	G	
<b>Service Factor (S.F.)</b>	1.15		<b>Starting Current</b>	192 A	
<b>NEMA Nom. Eff.</b>	93.6	<b>Power Factor</b>	82	<b>No-load Current</b>	12.6 A
<b>Rating - Duty</b>	40C		<b>Temp. Rise @ Rated Load</b>	28°C	
<b>S.F. Amps</b>	AMB-CONT		<b>Temp. Rise @ S.F. Load</b>	34°C	
			<b>Locked-rotor Power Factor</b>	35	

**Load Characteristics 460 V, 60 Hz, 25 HP**

<b>% of Rated Load</b>	<b>25</b>	<b>50</b>	<b>75</b>	<b>100</b>	<b>125</b>	<b>150</b>	<b>S.F.</b>
<b>Power Factor</b>	45	67	78	82	85	85	84
<b>Efficiency</b>	89.4	93.1	93.8	93.6	93	92.1	93.2
<b>Speed</b>	1794.8	1789.5	1783.7	1777.6	1771	1763.2	1774
<b>Line amperes</b>	14.5	18.6	24.1	30.3	37.2	44.6	34.4

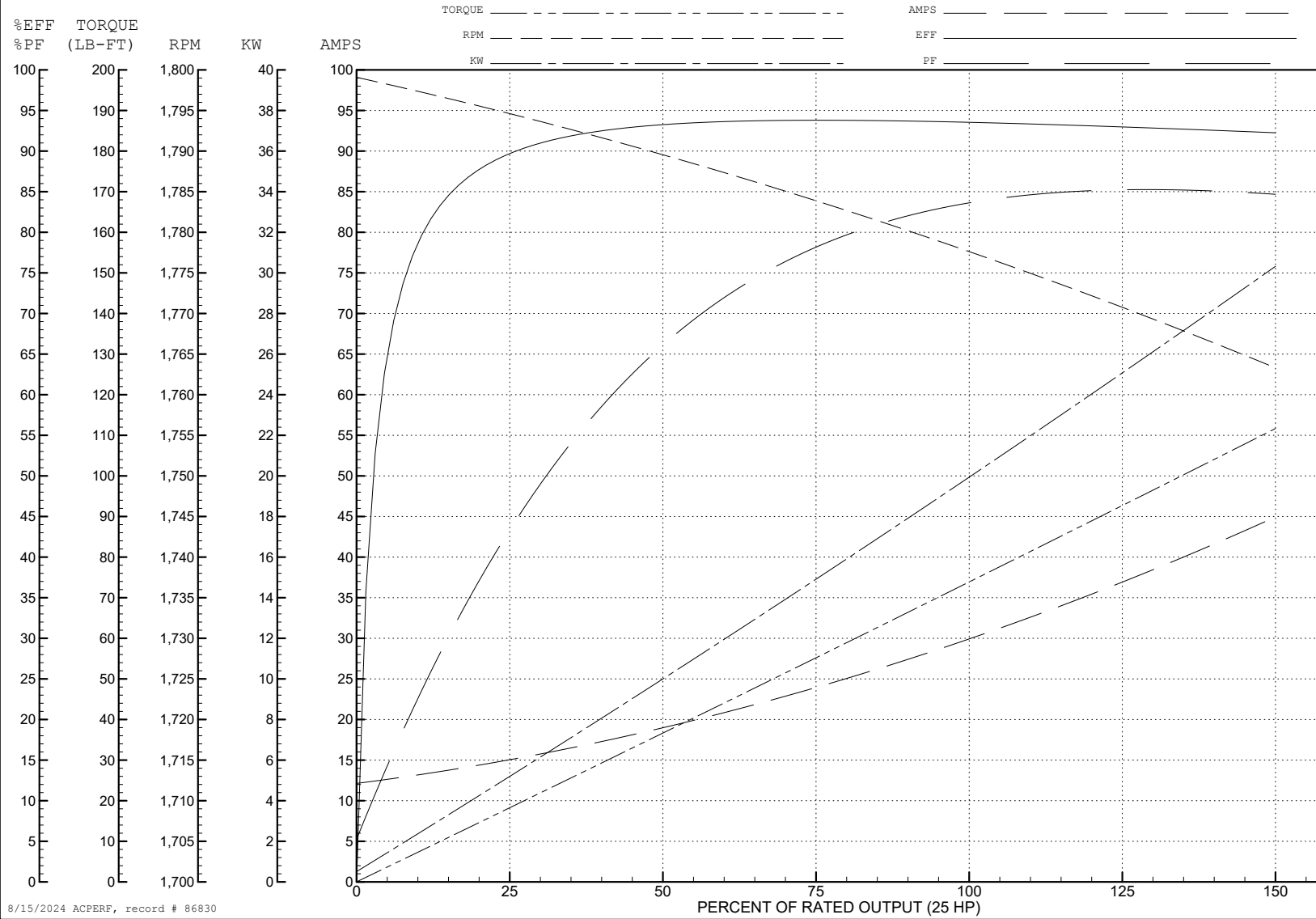
ABB Motors and Mechanical Inc.

WINDING # 40WGx806

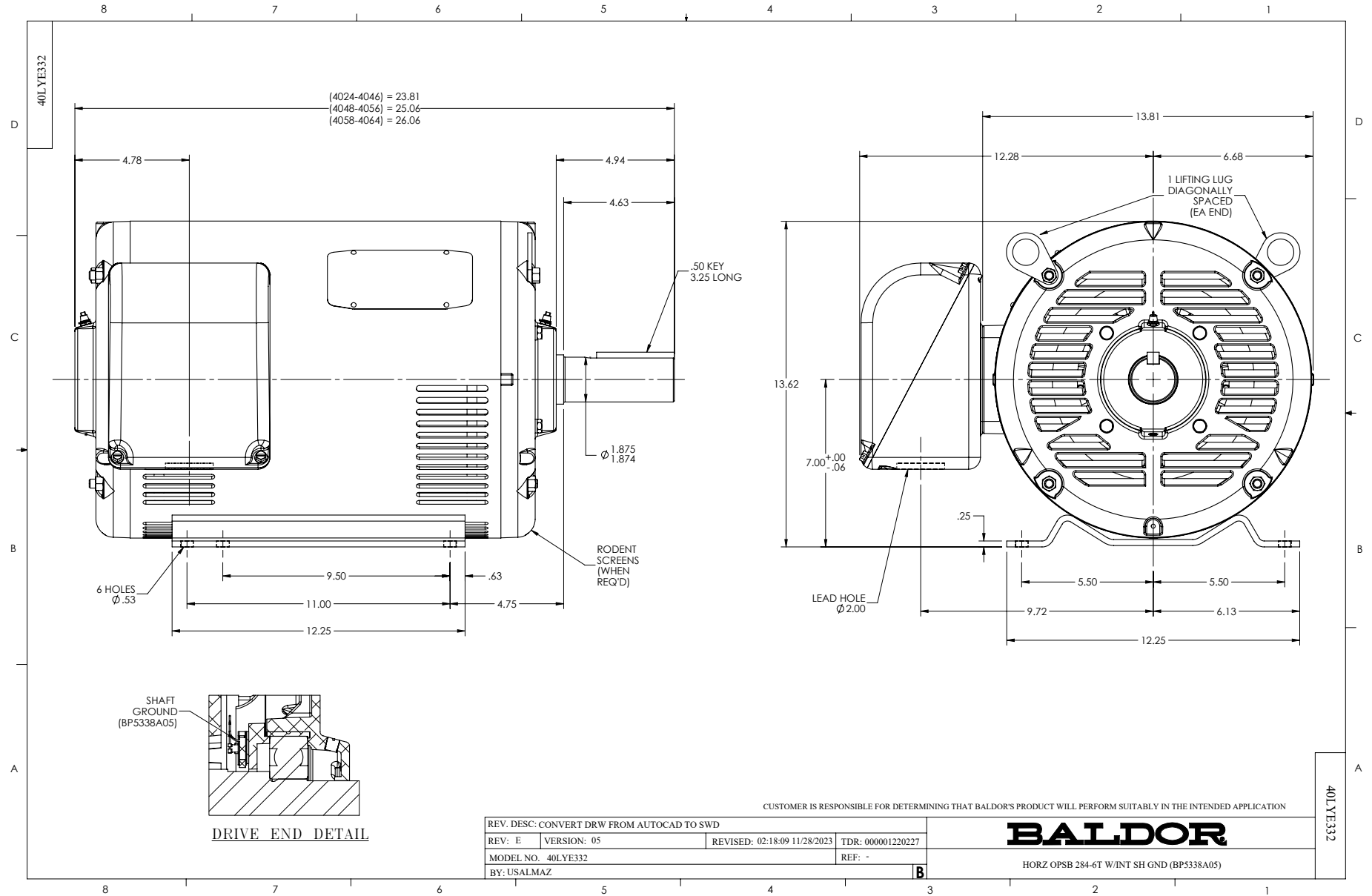
Typical performance - not guaranteed values.

25 HP 3 PH 60 HZ 1775 RPM 460 V 4050M

TORQUES (LB-FT): PO=232 PU=116 LR=133 LRA=192



8/15/2024 ACPERF, record # 86830



CD0005

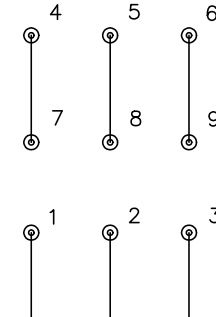


LOW VOLTAGE  
(2Y)



LINE

HIGH VOLTAGE  
(1Y)



LINE

NOTES:

1. INTERCHANGE ANY TWO LINE LEADS TO REVERSE ROTATION.
2. OPTIONAL THERMOSTATS ARE PROVIDED WHEN SPECIFIED.
3. ACTUAL NUMBER OF INTERNAL PARALLEL CIRCUITS MAY BE A MULTIPLE OF THOSE SHOWN ABOVE.
4. LEAD COLORS ARE OPTIONAL. LEADS MUST ALWAYS BE NUMBERED AS SHOWN.

CD0005

REV. DESC: REVISE TO SHOW OPTIONAL COLORS			
REV. LTR: E	BY: JLP	REVISED: 01/19/99 10:15	TDR: 0171435
S00000		FILE: AAA00005140	MDL: -
		MTL: -	

**BALDOR ELECTRIC Co.**

3PH, DV, 9 LEADS