

BALDOR • RELIANCE

Customer information packet

EM2524T-BG

15HP, 1180RPM, 3PH, 60HZ, 284T, 4038M, OPSB, F1

Specifications

Enclosure	OPSB
Frame	284T
Frame Material	Steel
Frequency	60.00 Hz
Motor Letter Type	Three Phase
Output @ Frequency	15.000 HP @ 60 HZ
Phase	3
Synchronous Speed @ Frequency	1200 RPM @ 60 HZ
Voltage @ Frequency	230.0 V @ 60 HZ 460.0 V @ 60 HZ
Agency Approvals	CSA CSA EEV UR
Ambient Temperature	40 °C
Auxillary Box	No Auxillary Box
Auxillary Box Lead Termination	None
Base Indicator	Rigid
Bearing Grease Type	Polyrex EM (-20F +300F)
Blower	None
Current @ Voltage	41.000 A @ 230.0 V 42.000 A @ 208.0 V 20.500 A @ 460.0 V
Design Code	B
Drip Cover	No Drip Cover
Duty Rating	CONT
Efficiency @ 100% Load	91.7 %
Electrically Isolated Bearing	Not Electrically Isolated
Feedback Device	NO FEEDBACK
Front Face Code	Standard
Front Shaft Indicator	None
Heater Indicator	No Heater
High Voltage Full Load Amps	20.5 a

Part detail

Revision	R
Type	AC
Mech. spec.	40E332
Base	
Status	PRD/A
Elec. spec.	40WGX775
Layout	40LYE332
Eff. date	11-29-2023
CD Diagram	CD0005
Poles	06
Leads	9#10
Proprietary	False
Created date	10-09-2013

Insulation Class	H
Inverter Code	Inverter Ready
KVA Code	G
Lifting Lugs	Standard Lifting Lugs
Locked Bearing Indicator	No Locked Bearing
Motor Lead Exit	Ko Box
Motor Lead Quantity/Wire Size	9 @ 10 AWG
Motor Lead Termination	Flying Leads
Motor Standards	NEMA
Motor Type	4038M
Mounting Arrangement	F1
Number of Poles	6
Overall Length	23.81 IN
Power Factor	75
Product Family	General Purpose
Pulley End Bearing Type	Ball
Pulley Face Code	Standard
Pulley Shaft Indicator	Standard
Rodent Screen	None
Service Factor	1.15
Shaft Diameter	1.875 IN
Shaft Extension Location	Pulley End
Shaft Ground Indicator	Shaft Grounding
Shaft Rotation	Reversible
Shaft Slinger Indicator	No Slinger
Speed	1180 rpm
Speed Code	Single Speed
Starting Method	Direct on line
Thermal Device - Bearing	None
Thermal Device - Winding	None
Vibration Sensor Indicator	No Vibration Sensor
Winding Thermal 1	None
Winding Thermal 2	None

Nameplate

NP2138LUA											
CAT.NO.	EM2524T-BG		P/N					ENCLOSURE		OPSB	
SPEC.	40E332X775G1	CC	010A	FRAME	284T	S/N					
HP	15	CLASS		H	HZ		60				
RPM	1180	PH	3	DES		B					
VOLT	230/460		KVA-CODE		G	ODE BRG		6309	DE BRG		6311
AMP	41/20.5										
RATING	40C AMB-CONT			GREASE		POLYREX EM					
NEMA-NOM-EFF	91.7	PF	75	SER.F.		1.15					
	50HZ 15HP 190/380V 48/24A					SF1.0					
HTR-VOLTS		HTR-AMPS									

AC Induction Motor Performance Data

Record # 36103

Typical performance - not guaranteed values

Winding: 40WGX775-R002		Type: 4038M		Enclosure: OPSB	
Nameplate Data			460 V, 60 Hz: High Voltage Connection		
Rated Output (HP)	15		Full Load Torque	66.8 LB-FT	
Volts	230/460		Start Configuration	direct on line	
Full Load Amps	41/20.5		Breakdown Torque	185 LB-FT	
R.P.M.	1180		Pull-up Torque	87.7 LB-FT	
Hz	60 Phase	3	Locked-rotor Torque	105 LB-FT	
NEMA Design Code	B KVA Code	G	Starting Current	116 A	
Service Factor (S.F.)	1.15		No-load Current	10.1 A	
NEMA Nom. Eff.	91.7 Power Factor	75	Line-line Res. @ 25°C	0.67748 Ω	
Rating - Duty	40C AMB-CONT		Temp. Rise @ Rated Load	26°C	
S.F. Amps			Temp. Rise @ S.F. Load	31°C	
			Locked-rotor Power Factor	34	
			Rotor inertia	4.65 LB-FT ²	

Load Characteristics 460 V, 60 Hz, 15 HP

% of Rated Load	25	50	75	100	125	150	S.F.
Power Factor	37	58	69	75	78	79	77
Efficiency	85.5	90.7	91.8	91.8	91.2	89.9	91.4
Speed	1195.6	1191.7	1187.6	1182.8	1177.5	1169.8	1180
Line amperes	11.1	13.4	16.6	20.4	24.8	30.7	23

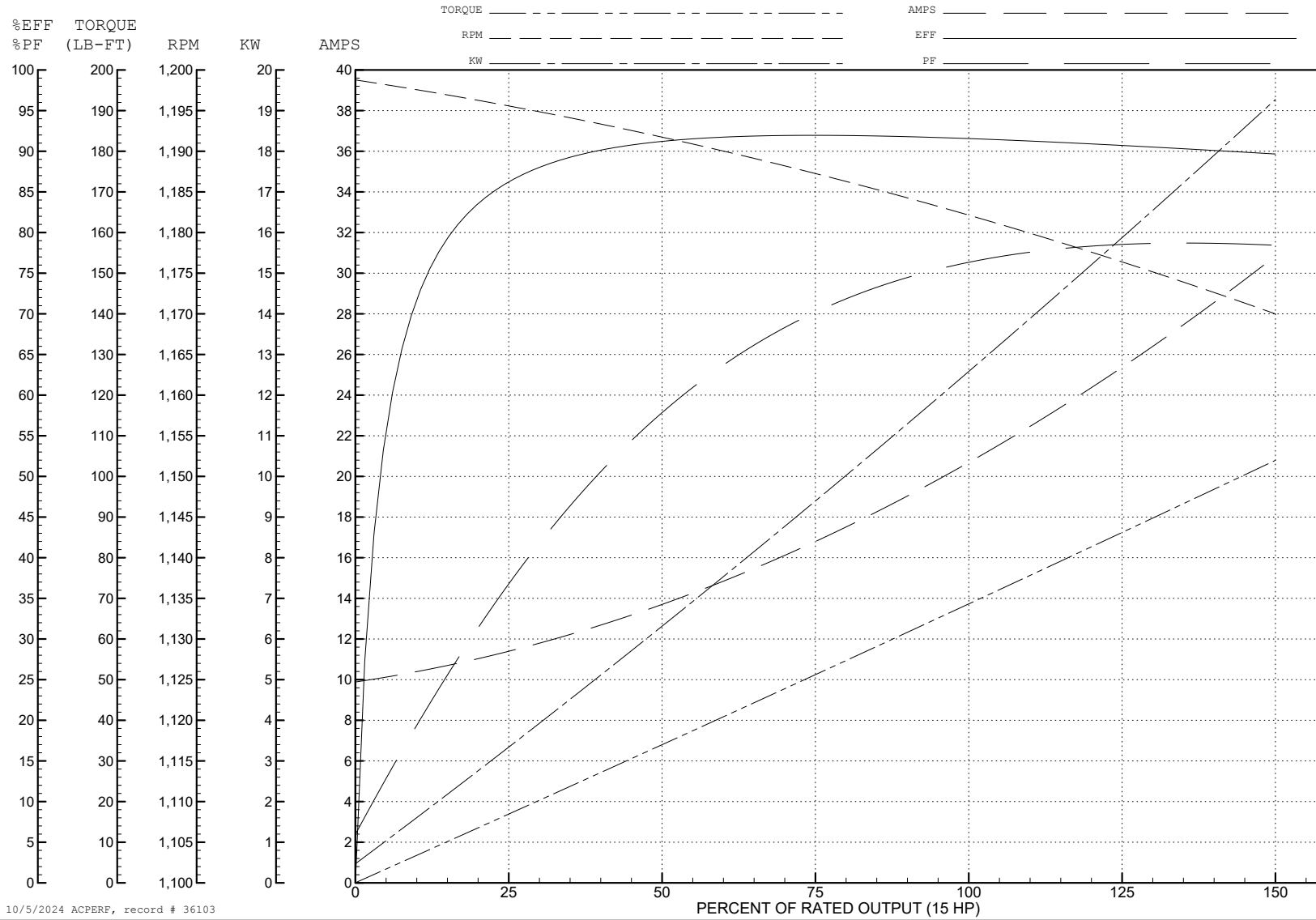
ABB Motors and Mechanical Inc.

WINDING # 40WGx775

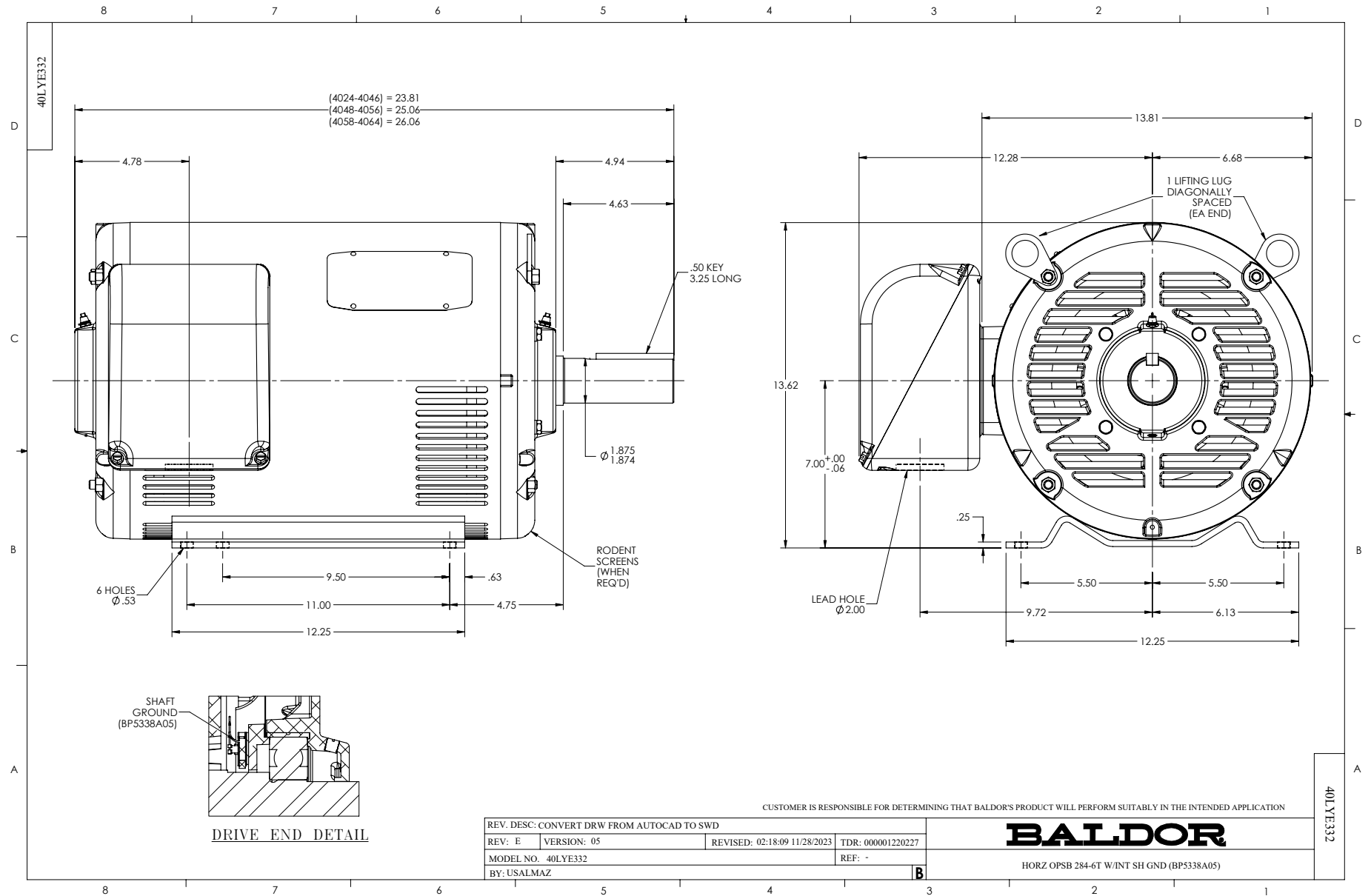
15 HP 3 PH 60 HZ 1180 RPM 460 V 4038M

Typical performance - not guaranteed values.

TORQUES (LB-FT): PO=185 PU=87.7 LR=105 LRA=116



10/5/2024 ACPERF, record # 36103



CD0005

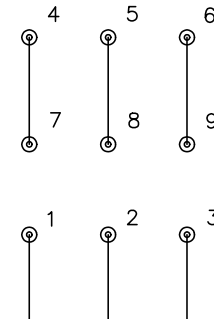


LOW VOLTAGE
(2Y)



LINE

HIGH VOLTAGE
(1Y)



LINE

NOTES:

1. INTERCHANGE ANY TWO LINE LEADS TO REVERSE ROTATION.
2. OPTIONAL THERMOSTATS ARE PROVIDED WHEN SPECIFIED.
3. ACTUAL NUMBER OF INTERNAL PARALLEL CIRCUITS MAY BE A MULTIPLE OF THOSE SHOWN ABOVE.
4. LEAD COLORS ARE OPTIONAL. LEADS MUST ALWAYS BE NUMBERED AS SHOWN.

CD0005

REV. DESC: REVISE TO SHOW OPTIONAL COLORS			
REV. LTR: E	BY: JLP	REVISED: 01/19/99 10:15	TDR: 0171435
S00000		FILE: AAA00005140	MDL: -
		MTL: -	

BALDOR ELECTRIC Co.

3PH, DV, 9 LEADS