

DUTY MASTER ALTERNATING CURRENT MOTORS

SQUIRREL-CAGE INDUCTION

FRAME E449TS

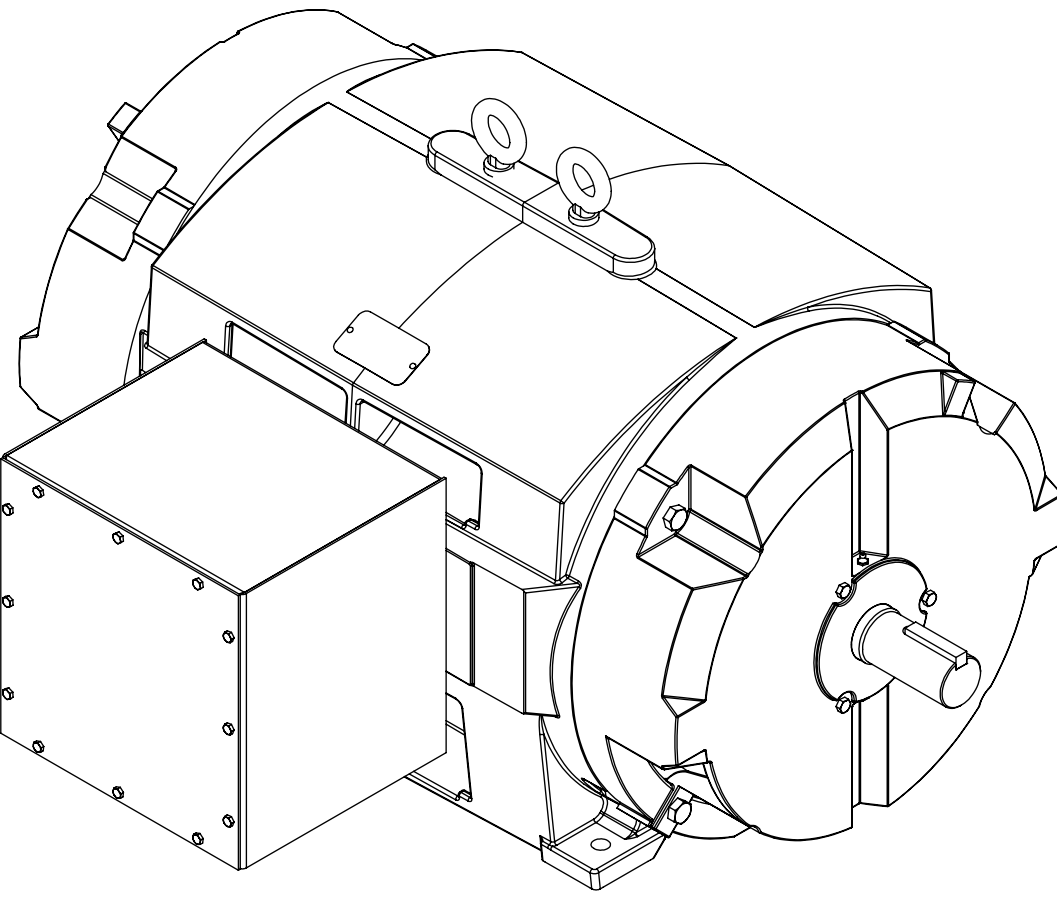
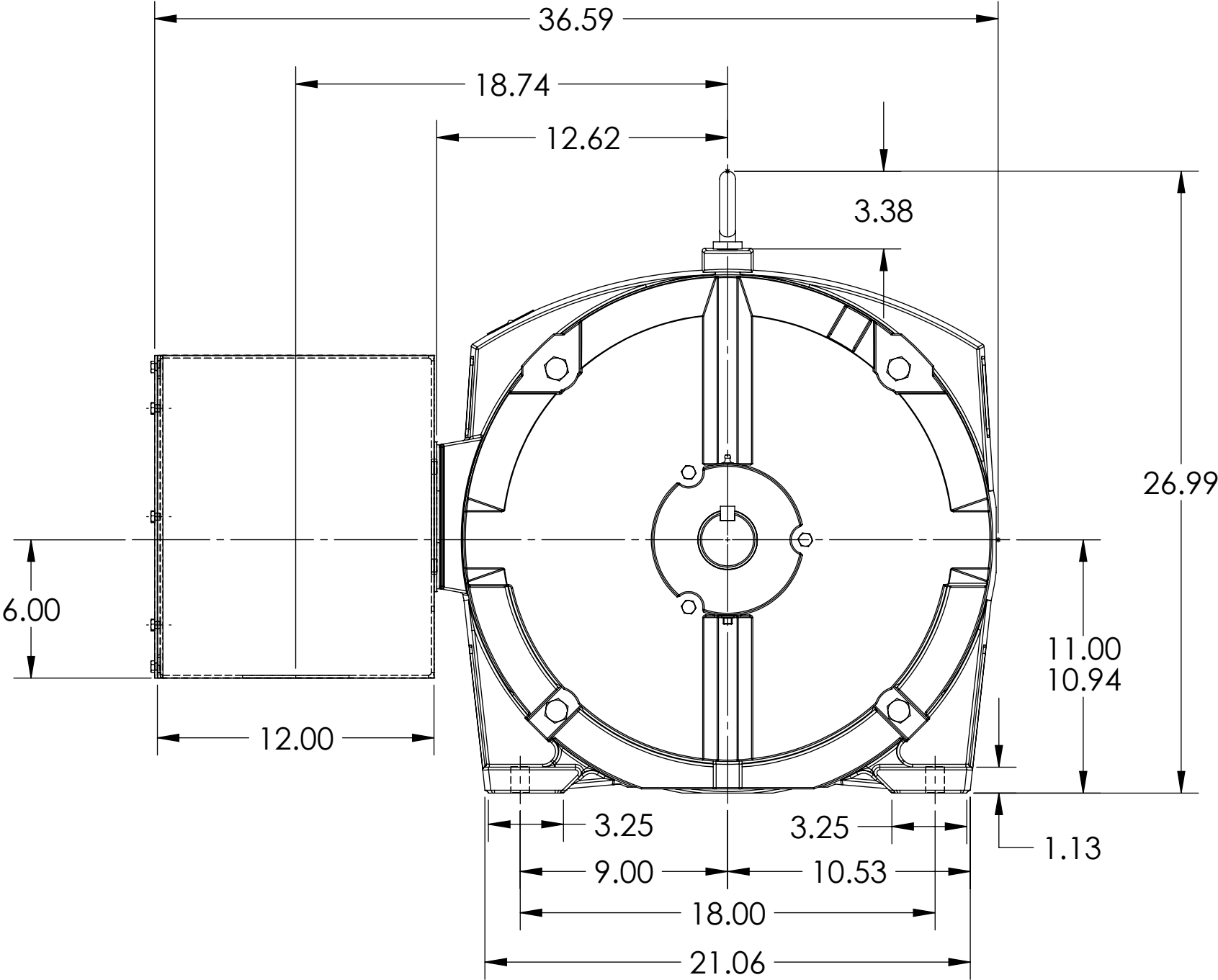
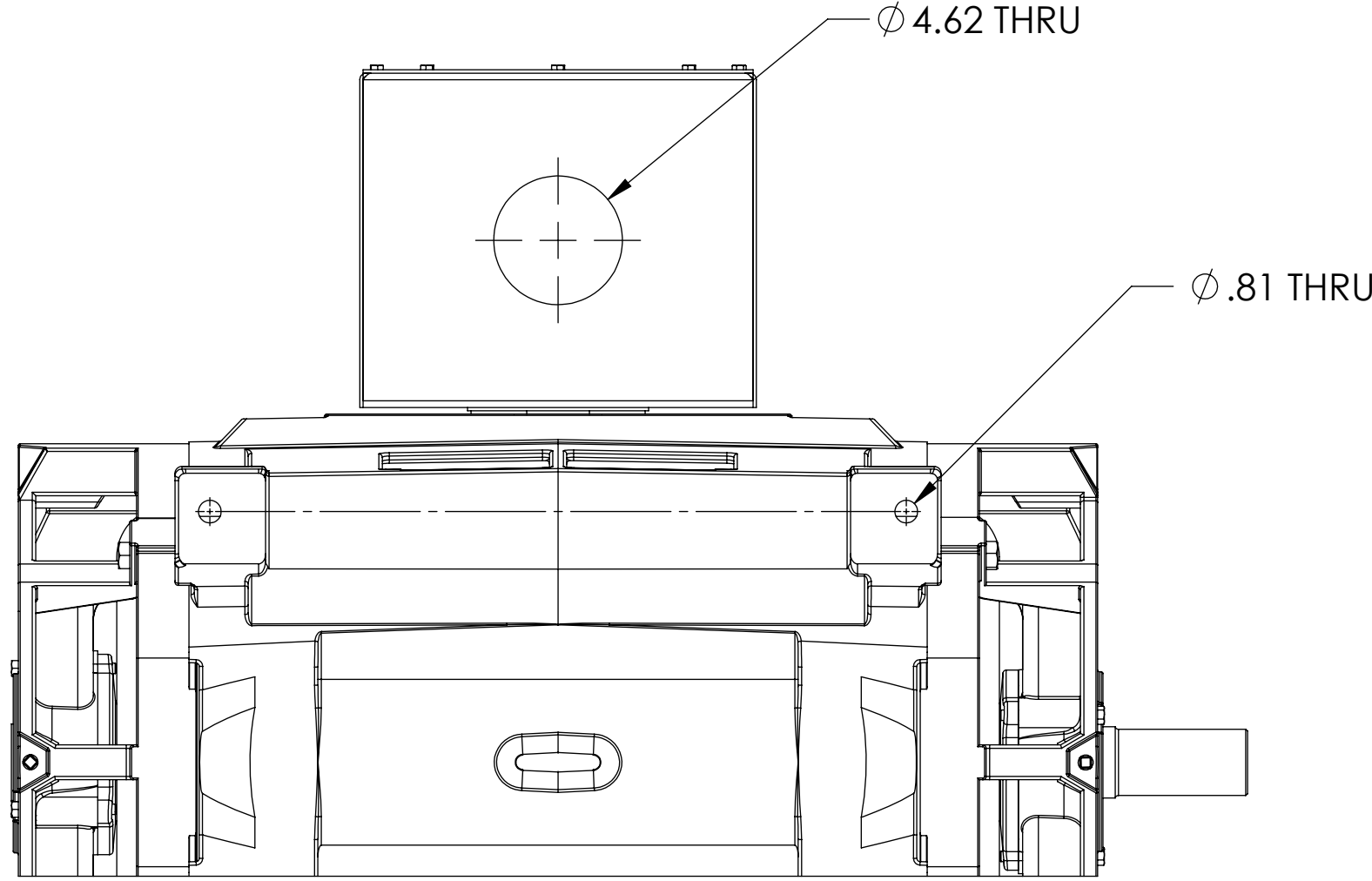
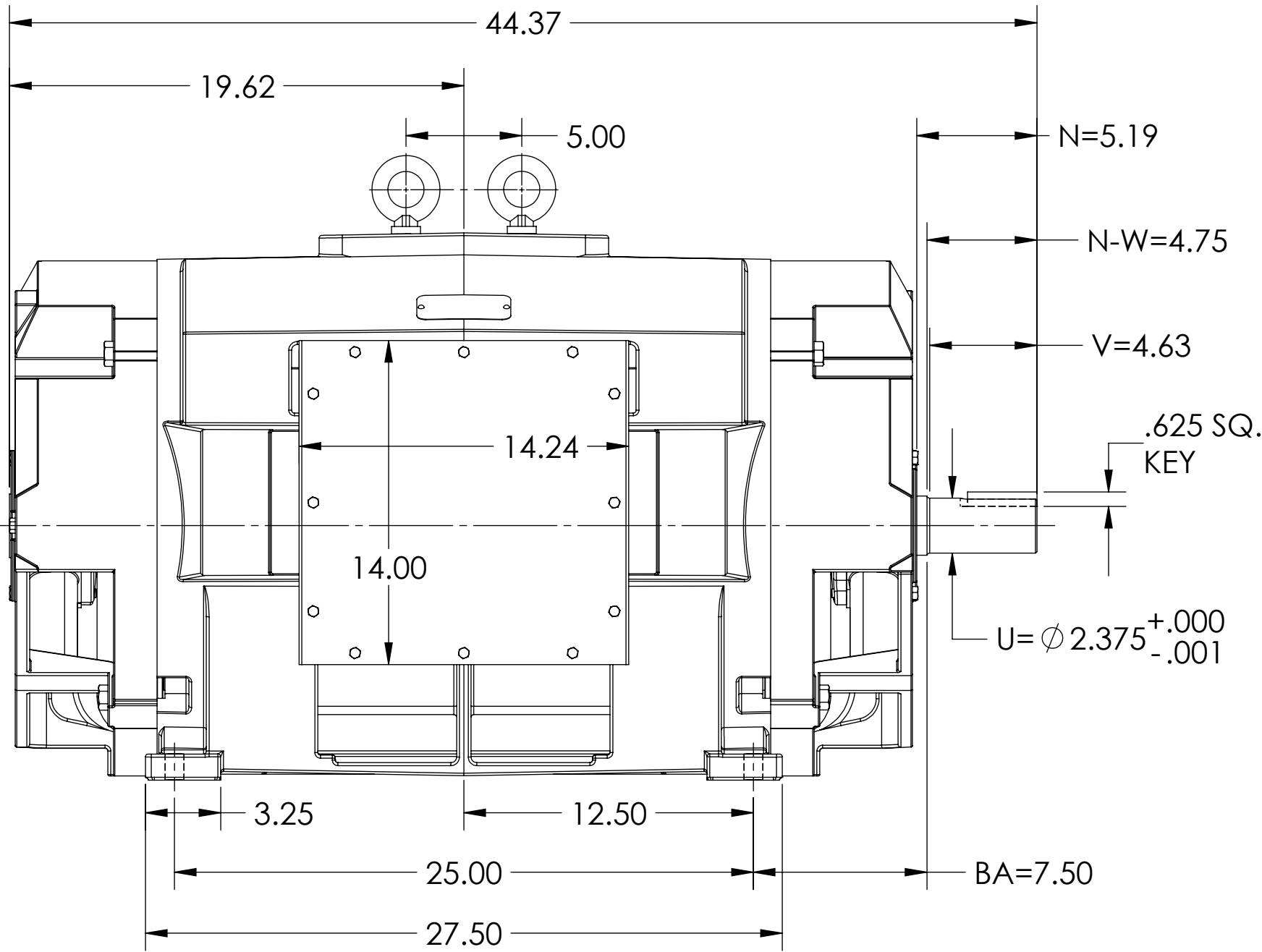
604989-501

ENCLOSURE: OPEN DRIP-PROOF (PROTECTED)

COOLING: SELF-VENTILATED

MOUNTING: FOOT, F-1

SPECIAL FABRICATED 14 X 14 X 12 STEEL C/BOX



WEIGHT (LBS) 2100/ MAY VARY 15% DEPENDING ON RATING
DIMENSIONS ARE IN INCHES
CUSTOMER IS RESPONSIBLE FOR DETERMINING THAT MOTOR PERFORMANCE IS SUITABLE IN THE APPLICATION.

REV. DESC: UPDATE MODEL TO ADD EXTERNAL HARDWARE PER PROD MGM			
REV: C	VERSION: 03	REVISED: 07:47:31 07/14/2022	TDR: 000001193529
MODEL NO. 604989-501			
BY: USBUFRA			

BALDOR

E449TS PROT F-1 FT MTG - 24 X 20 X 12 FABRICATED STEEL BOX

IF MOUNTING CLEARANCE DETAILS ARE REQUIRED, CONSULT FACTORY.

MAXIMUM PERMISSIBLE SHAFT RUNOUT WHEN MEASURED AT END OF
STANDARD SHAFT EXTENSION IS .003" MAX. T.I.R.

SHEET NUMBER
1 OF 1
105-686#09

105-686#09