

ABB BALDOR RELIANCE III

Customer information packet

EM2513T-58

15HP, 1470RPM, 3PH, 50HZ, 254T, 3942M, OPSB, F3

Class - None

Division - Not Applicable

Specifications

Enclosure	OPSB
Frame	254T
Frame Material	Steel
Frequency	50.00 Hz
Haz Area Class and Group	None
Haz Area Division	Not Applicable
Motor Letter Type	Three Phase
Output @ Frequency	15.000 HP @ 50 HZ
Phase	3
Synchronous Speed @ Frequency	1500 RPM @ 50 HZ
Voltage @ Frequency	400.0 V @ 50 HZ
Agency Approvals	C UR US CE CURUS IE3 UKCA WEEE
Ambient Temperature	40 °C
Auxiliary Box	NO AUXILLARY BOX
Auxiliary Box Lead Termination	None
Base Indicator	Rigid
Bearing Grease Type	Polyrex EM (-20F +300F)
Blower	None
Current @ Voltage	21.400 A @ 400.0 V
Design Code	B
Drip Cover	No Drip Cover
Duty Rating	CONT
Efficiency @ 100% Load	91.4 %
Electrically Isolated Bearing	Not Electrically Isolated
Feedback Device	NO FEEDBACK
Front Face Code	Standard
Front Shaft Indicator	None

Part Detail

Revision	R
Type	AC
Mech. spec.	39E318
Base	
Status	PRD/A
Elec. spec.	39WGX907
Layout	39LYE318
Eff. date	12-15-2025
CD Diagram	CD0382
Poles	04
Leads	6#12
Proprietary	False
Created date	04-03-2015

Heater Indicator	No Heater
High Voltage Full Load Amps	21.4 a
Insulation Class	F
Inverter Code	Inverter Ready
KVA Code	H
Lifting Lugs	Standard Lifting Lugs
Locked Bearing Indicator	No Locked Bearing
Motor Lead Exit	Ko Box
Motor Lead Quantity/Wire Size	6 @ 12 AWG
Motor Lead Termination	Flying Leads
Motor Standards	NEMA
Motor Type	3942M
Mounting Arrangement	F3
Number of Poles	4
Overall Length	21.69 IN
Power Factor	82
Product Family	General Purpose
Pulley End Bearing Type	Ball
Pulley Face Code	Standard
Pulley Shaft Indicator	Standard
Rodent Screen	Included
RoHS Status	ROHS COMPLIANT
Service Factor	1.15
Shaft Diameter	1.625 IN
Shaft Extension Location	Pulley End
Shaft Ground Indicator	No Shaft Grounding
Shaft Rotation	Reversible
Shaft Slinger Indicator	No Slinger
Speed	1465 rpm
Speed Code	Single Speed
Starting Method	Wye Start - Delta Run
Thermal Device - Bearing	None
Thermal Device - Winding	None
Vibration Sensor Indicator	No Vibration Sensor

Winding Thermal 1

None

Winding Thermal 2

None

Nameplate

NP2716L										
CAT NO	EM2513T-58									
SPEC.	39E318X907G1									
HP	15HP/11KW						PH	3		
VOLTS	400									
AMP	21.4									
R.P.M. (1/MIN)	1465									
FRAME	254T		HZ	50		I.P.	23			
SER.F.	1.15	CODE	H	DES	B	CL	F			
NOM.EFF.	91.4		% (100%)							
PF	82									
RATING	40C AMB-S1 CONT				CC					
DE BRG	6309		ODE	6208						
ENCL	OPSB	SN								
BLANK	IE3-92.2(75%)91.7(50%)									
	IC411									
	102 KG									

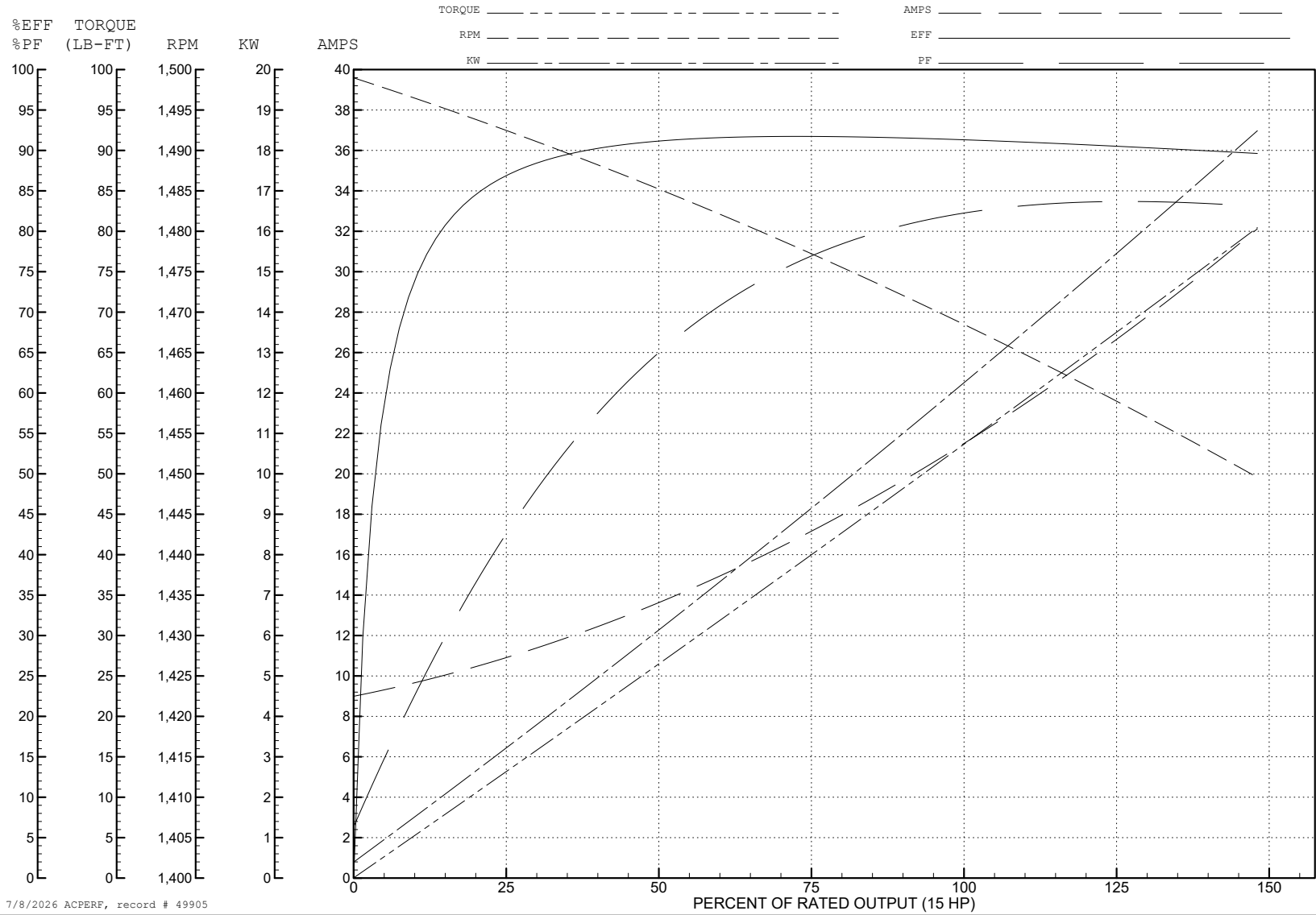
ABB Motors and Mechanical Inc.

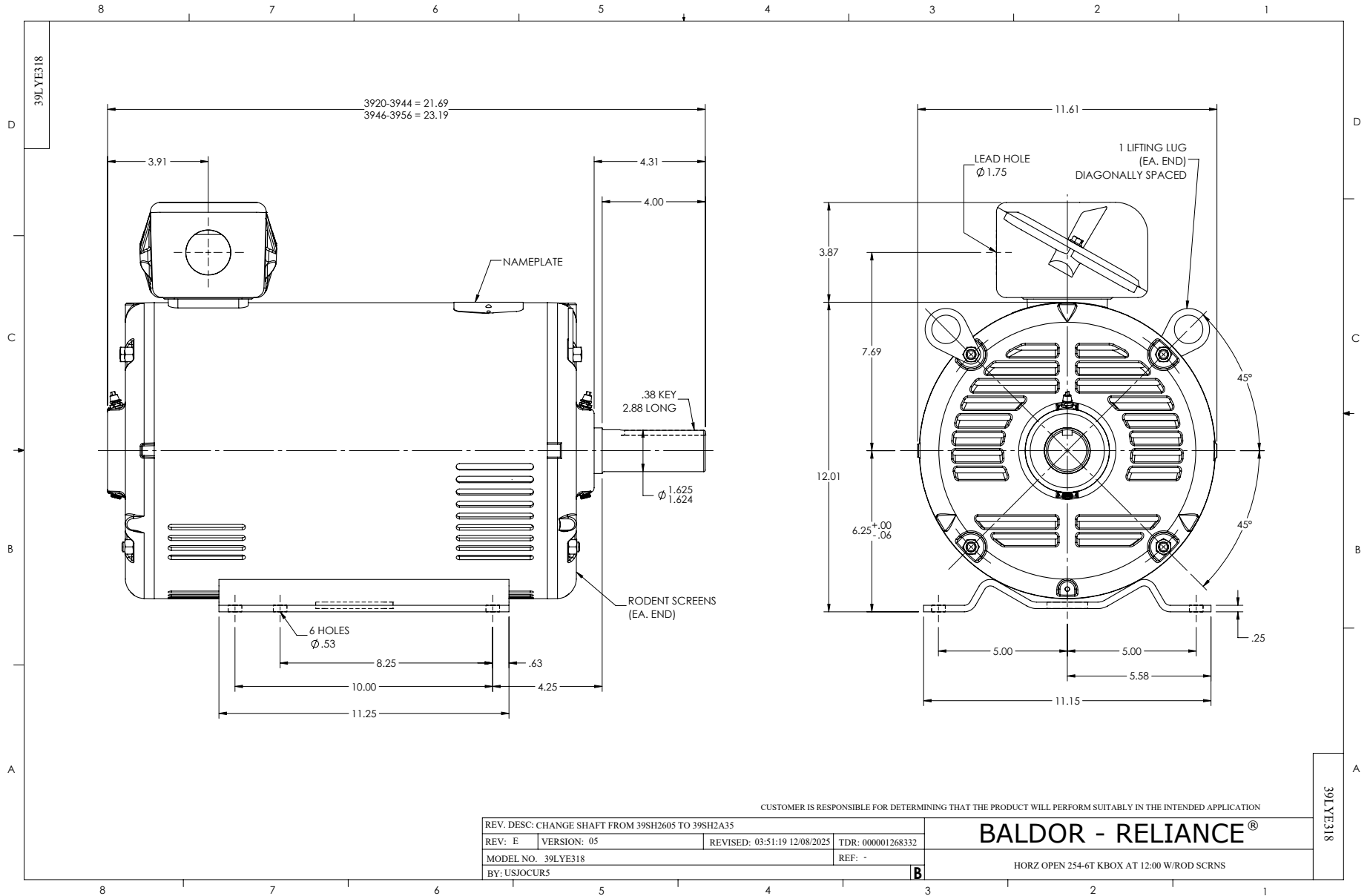
WINDING # 39WGX907

Typical performance - not guaranteed values.

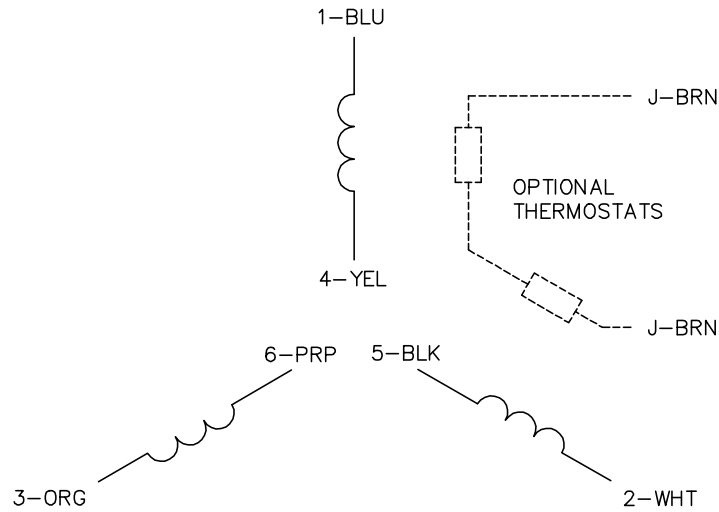
15 HP 3 PH 50 HZ 1465 RPM 400 V 3942M

TORQUES (LB-FT): PO=204 PU=94.8 LR=104 LRA=135

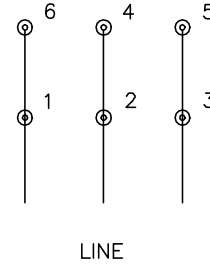




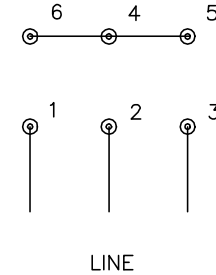
CD0382



RUN CONNECTION
(1D)



START CONNECTION
(1Y)



NOTES:

1. INTERCHANGE ANY TWO LINE LEADS TO REVERSE ROTATION.
2. OPTIONAL THERMOSTATS ARE PROVIDED WHEN SPECIFIED.
3. ACTUAL NUMBER OF INTERNAL PARALLEL CIRCUITS MAY BE A MULTIPLE OF THOSE SHOWN ABOVE.
4. LEAD COLORS ARE OPTIONAL. LEADS MUST ALWAYS BE NUMBERED AS SHOWN.
5. FOR ACROSS-THE-LINE STARTING, USE 'RUN' CONNECTION.

CD0382

REV. DESC: ADD CLASS CONN00000007		
REV. LTR: F	VERSION: 01	TDR: 000001099922
FILE: \AAA\00005\243	REVISED: 09:05:32 02/19/2019	BY: ENBRIRO
MTL: -	© □	

BALDOR - RELIANCE®

3PH, SV, 6 LEADS, Y START/D RUN

SH 1 of 1