

BALDOR • RELIANCE

Customer information packet

EM2508T

7.5HP, 880RPM, 3PH, 60HZ, 256T, 3962M, OPSB, F1

Class - None

Division - Not Applicable

Copyright © All product information within this document is subject to ABB Motors and Mechanical Inc. copyright © protection, unless otherwise noted.

4/18/2025 2:19:51 PM

Specifications

Enclosure	OPSB
Frame	256T
Frame Material	Steel
Frequency	60.00 Hz
Haz Area Class and Group	None
Haz Area Division	Not Applicable
Motor Letter Type	Three Phase
Output @ Frequency	7.500 HP @ 60 HZ
Phase	3
Synchronous Speed @ Frequency	900 RPM @ 60 HZ
Voltage @ Frequency	230.0 V @ 60 HZ 460.0 V @ 60 HZ
Agency Approvals	NEMA PREMIUM CURUSEEV
Ambient Temperature	40 °C
Auxillary Box	No Auxillary Box
Auxillary Box Lead Termination	None
Base Indicator	Rigid
Bearing Grease Type	Polyrex EM (-20F +300F)
Blower	None
Current @ Voltage	11.700 A @ 460.0 V 23.400 A @ 230.0 V 24.400 A @ 208.0 V
Design Code	B
Drip Cover	No Drip Cover
Duty Rating	CONT
Efficiency @ 100% Load	89.5 %
Electrically Isolated Bearing	Not Electrically Isolated
Feedback Device	NO FEEDBACK
Front Face Code	Standard
Front Shaft Indicator	None
Heater Indicator	No Heater

Part detail

Revision	T
Type	AC
Mech. spec.	39K57
Base	
Status	PRD/A
Elec. spec.	39WGX910
Layout	39LYK057
Eff. date	12-18-2024
CD Diagram	CD0005
Poles	08
Leads	9#12
Proprietary	False
Created date	04-24-2015

High Voltage Full Load Amps	11.7 a
Insulation Class	F
Inverter Code	Not Inverter
IP Rating	NONE
KVA Code	G
Lifting Lugs	Standard Lifting Lugs
Locked Bearing Indicator	No Locked Bearing
Motor Lead Exit	Ko Box
Motor Lead Quantity/Wire Size	9 @ 12 AWG
Motor Lead Termination	Flying Leads
Motor Standards	NEMA
Motor Type	3962M
Mounting Arrangement	F1
Number of Poles	8
Overall Length	24.19 IN
Power Factor	67
Product Family	General Purpose
Pulley End Bearing Type	Ball
Pulley Face Code	Standard
Pulley Shaft Indicator	Standard
Rodent Screen	None
RoHS Status	ROHS NON-COMPLIANT
Service Factor	1.15
Shaft Diameter	1.625 IN
Shaft Extension Location	Pulley End
Shaft Ground Indicator	No Shaft Grounding
Shaft Rotation	Reversible
Shaft Slinger Indicator	No Slinger
Speed	880 rpm
Speed Code	Single Speed
Starting Method	Direct on line
Thermal Device - Bearing	None
Thermal Device - Winding	None
Vibration Sensor Indicator	No Vibration Sensor

Winding Thermal 1

None

Winding Thermal 2

None

Nameplate

NP1259L									
CAT.NO.	EM2508T								
SPEC.	39K057X910								
HP	7.5								
VOLTS	230/460								
AMP	23.4/11.7								
RPM	880								
FRAME	256T		HZ	60		PH	3		
SER.F.	1.15	CODE	G	DES	B	CL	F		
NEMA-NOM-EFF	89.5	PF	67						
RATING	40C AMB-CONT								
CC	010A								
DE	6309		ODE	6208					
ENCL	OPSB	SN							

AC Induction Motor Performance Data

Record # 51733

Typical performance - not guaranteed values

Winding: 39WGX910-R001		Type: 3962M	Enclosure: OPSB	
Nameplate Data			460 V, 60 Hz: High Voltage Connection	
Rated Output (HP)	7.5	Full Load Torque	45 LB-FT	
Volts	230/460	Start Configuration	direct on line	
Full Load Amps	23.4/11.7	Breakdown Torque	113 LB-FT	
R.P.M.	880	Pull-up Torque	74.6 LB-FT	
Hz	60 Phase	3	Locked-rotor Torque	94.2 LB-FT
NEMA Design Code	B KVA Code	G	Starting Current	57.1 A
Service Factor (S.F.)		1.15	No-load Current	6.56 A
NEMA Nom. Eff.	89.5 Power Factor	67	Line-line Res. @ 25°C	1.2778 Ω
Rating - Duty		40C AMB-CONT	Temp. Rise @ Rated Load	26°C
S.F. Amps			Temp. Rise @ S.F. Load	32°C

Load Characteristics 460 V, 60 Hz, 7.5 HP

% of Rated Load	25	50	75	100	125	150	S.F.
Power Factor	30	48	60	67	70	72	69
Efficiency	83.7	89.2	90.3	90.1	89.1	87.6	89.5
Speed	895.5	891.1	886.3	881.3	875.1	867.5	878
Line amperes	7.07	8.19	9.81	11.7	14.1	16.9	13.1

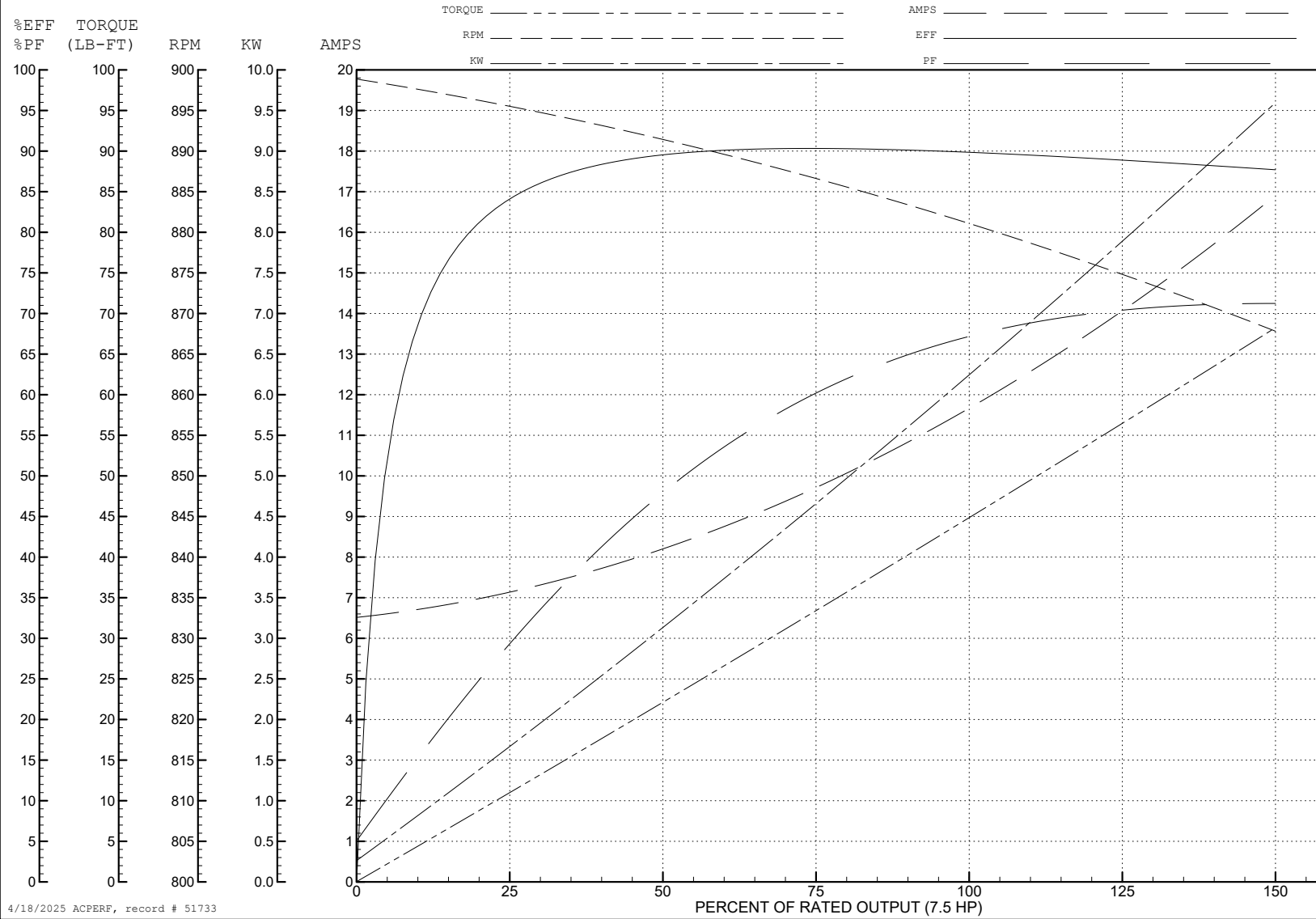
ABB Motors and Mechanical Inc.

WINDING # 39WGX910

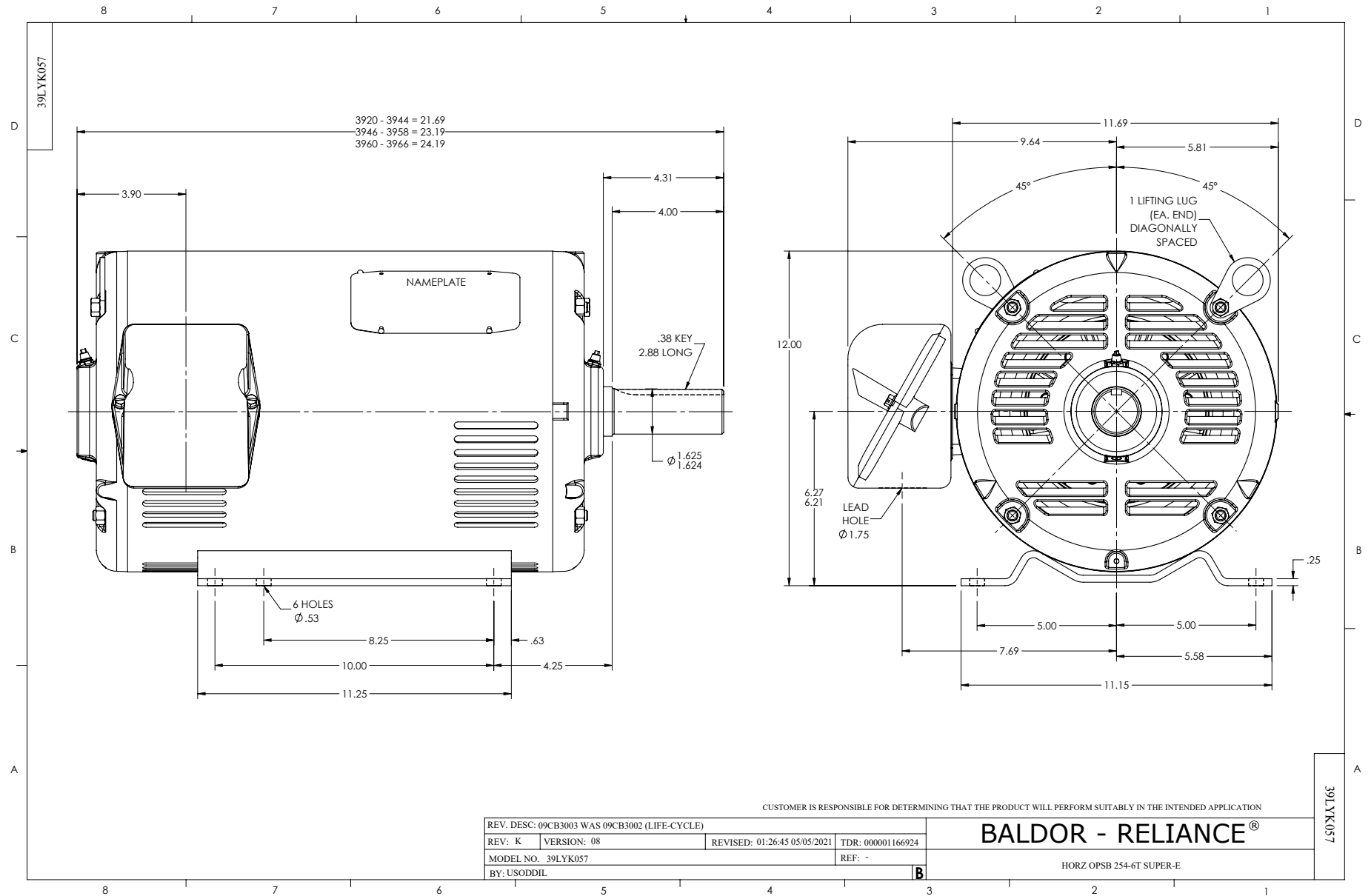
Typical performance - not guaranteed values.

7.5 HP 3 PH 60 HZ 880 RPM 460 V 3962M

TORQUES (LB-FT): PO=113 PU=74.6 LR=94.2 LRA=57.1



4/18/2025 ACPERF, record # 51733



CD0005



LOW VOLTAGE
(2Y)



LINE

HIGH VOLTAGE
(1Y)



LINE

NOTES:

1. INTERCHANGE ANY TWO LINE LEADS TO REVERSE ROTATION.
2. OPTIONAL THERMOSTATS ARE PROVIDED WHEN SPECIFIED.
3. ACTUAL NUMBER OF INTERNAL PARALLEL CIRCUITS MAY BE A MULTIPLE OF THOSE SHOWN ABOVE.
4. LEAD COLORS ARE OPTIONAL. LEADS MUST ALWAYS BE NUMBERED AS SHOWN.

CD0005

REV. DESC: REVISE TO SHOW OPTIONAL COLORS			
REV. LTR: E	BY: JLP	REVISED: 01/19/99 10:15	TDR: 0171435
S00000		FILE: AAA00005140	MDL: -
		MTL: -	

BALDOR ELECTRIC Co.

3PH, DV, 9 LEADS