

ABB BALDOR RELIANCE III

Customer information packet

EM2506T

7.5HP, 1185RPM, 3PH, 60HZ, 254T, 3950M, OPSB, F

Class - None

Division - Not Applicable

Specifications

Enclosure	OPSB
Frame	254T
Frame Material	Steel
Frequency	60.00 Hz
Haz Area Class and Group	None
Haz Area Division	Not Applicable
Motor Letter Type	Three Phase
Output @ Frequency	7.500 HP @ 60 HZ
Phase	3
Synchronous Speed @ Frequency	1200 RPM @ 60 HZ
Voltage @ Frequency	460.0 V @ 60 HZ 230.0 V @ 60 HZ
Agency Approvals	CURUSEEV NEMA PREMIUM NEMA PREMIUM (OLD LOGO)
Ambient Temperature	40 °C
Auxiliary Box	NO AUXILLARY BOX
Auxiliary Box Lead Termination	None
Base Indicator	Rigid
Bearing Grease Type	Polyrex EM (-20F +300F)
Blower	None
Current @ Voltage	22.800 A @ 230.0 V 24.000 A @ 208.0 V 11.400 A @ 460.0 V
Design Code	A
Drip Cover	No Drip Cover
Duty Rating	CONT
Efficiency @ 100% Load	90.2 %
Electrically Isolated Bearing	Not Electrically Isolated
Feedback Device	NO FEEDBACK
Front Shaft Indicator	None
Heater Indicator	No Heater

Part Detail

Revision	H
Type	AC
Mech. spec.	39K57
Base	
Status	PRD/A
Elec. spec.	39WGY440
Layout	39LYK057
Eff. date	12-12-2025
CD Diagram	CD0180
Poles	06
Leads	9#12
Proprietary	False
Created date	11-18-2020

High Voltage Full Load Amps	11.4 a
Insulation Class	F
Inverter Code	Inverter Ready
IP Rating	NONE
KVA Code	K
Lifting Lugs	Standard Lifting Lugs
Locked Bearing Indicator	No Locked Bearing
Motor Lead Quantity/Wire Size	9 @ 12 AWG
Motor Lead Termination	Flying Leads
Motor Standards	NEMA
Motor Type	3950M
Mounting Arrangement	F1
Number of Poles	6
Overall Length	23.19 IN
Power Factor	68
Product Family	General Purpose
Pulley End Bearing Type	Ball
Pulley Face Code	Standard
Pulley Shaft Indicator	Standard
Rodent Screen	None
Service Factor	1.15
Shaft Diameter	1.625 IN
Shaft Ground Indicator	No Shaft Grounding
Shaft Rotation	Reversible
Shaft Slinger Indicator	No Slinger
Speed	1185 rpm
Speed Code	Single Speed
Starting Method	Direct on line
Thermal Device - Bearing	None
Thermal Device - Winding	None
Vibration Sensor Indicator	No Vibration Sensor
Winding Thermal 1	None
Winding Thermal 2	None

Nameplate

NP3554LUA									
CAT.NO.	EM2506T			P/N				ENCL	OPSB
SPEC.	39K057Y440	CC	010A	FRAME	254T		SER.NO.		
HP	7.5		CLASS	F	HZ	60			
RPM	1185		PH	3	DES	A			
VOLTS	230/460		CODE	K	ODE BRG	6208	DE BRG	6309	
AMPS	22.8/11.4								
RATING	40C AMB-CONT		NEMA-NOM-EFF	90.2	GREASE	POLYREX EM			
PF	68	SER.F.	1.15		CT30-60(2:1) VT3-60(20:1)				
USABLE AT	50HZ 7.5HP 190/380V 27.0/13.5A			SF 1.0					
HTR-VOLTS	HTR-AMPS	MAX. SPACE HEATER TEMP.							

Accessories

Part number	Description	Multiplier
39-3400	C FACE KIT	A8

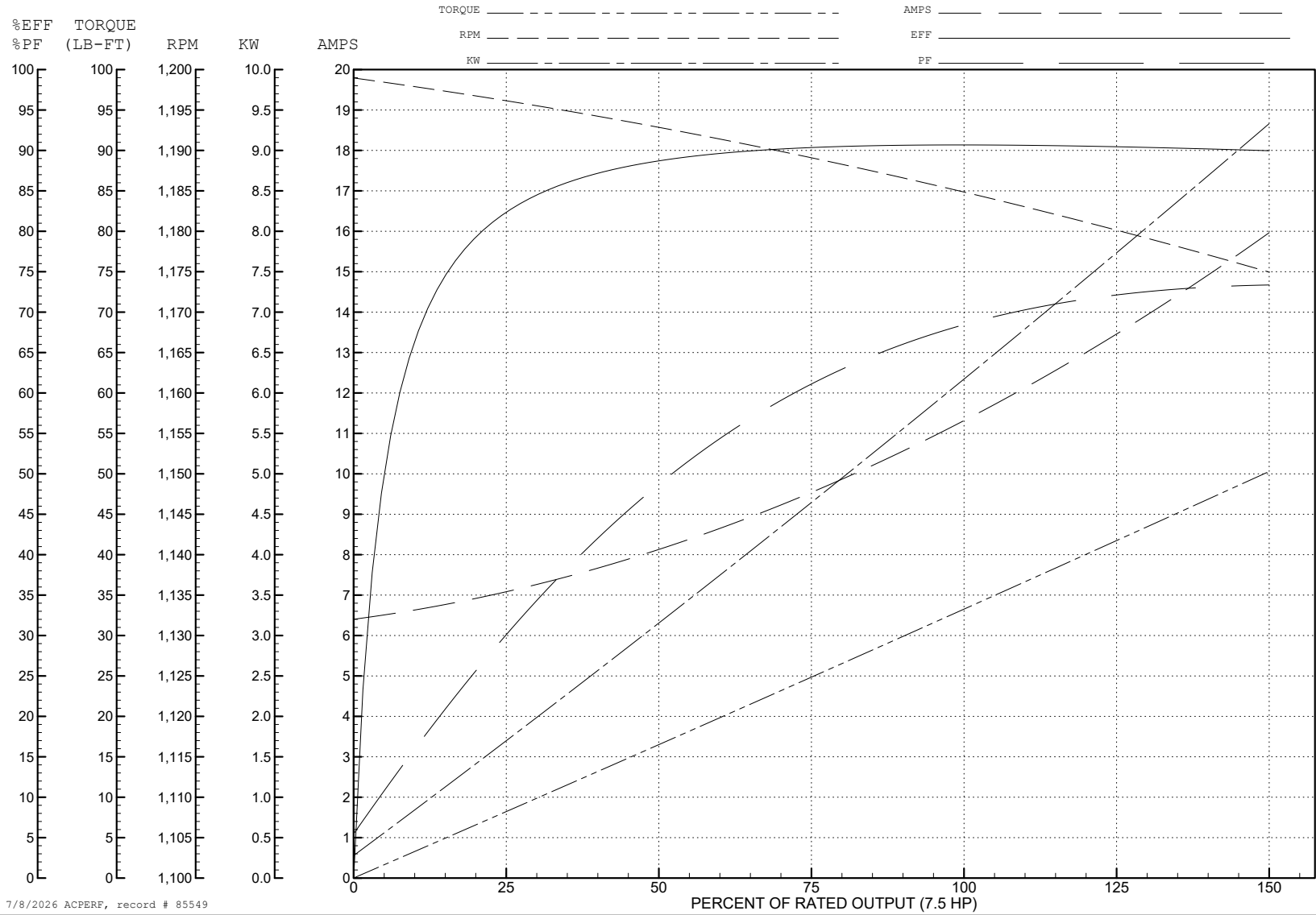
ABB Motors and Mechanical Inc.

WINDING # 39WGY440

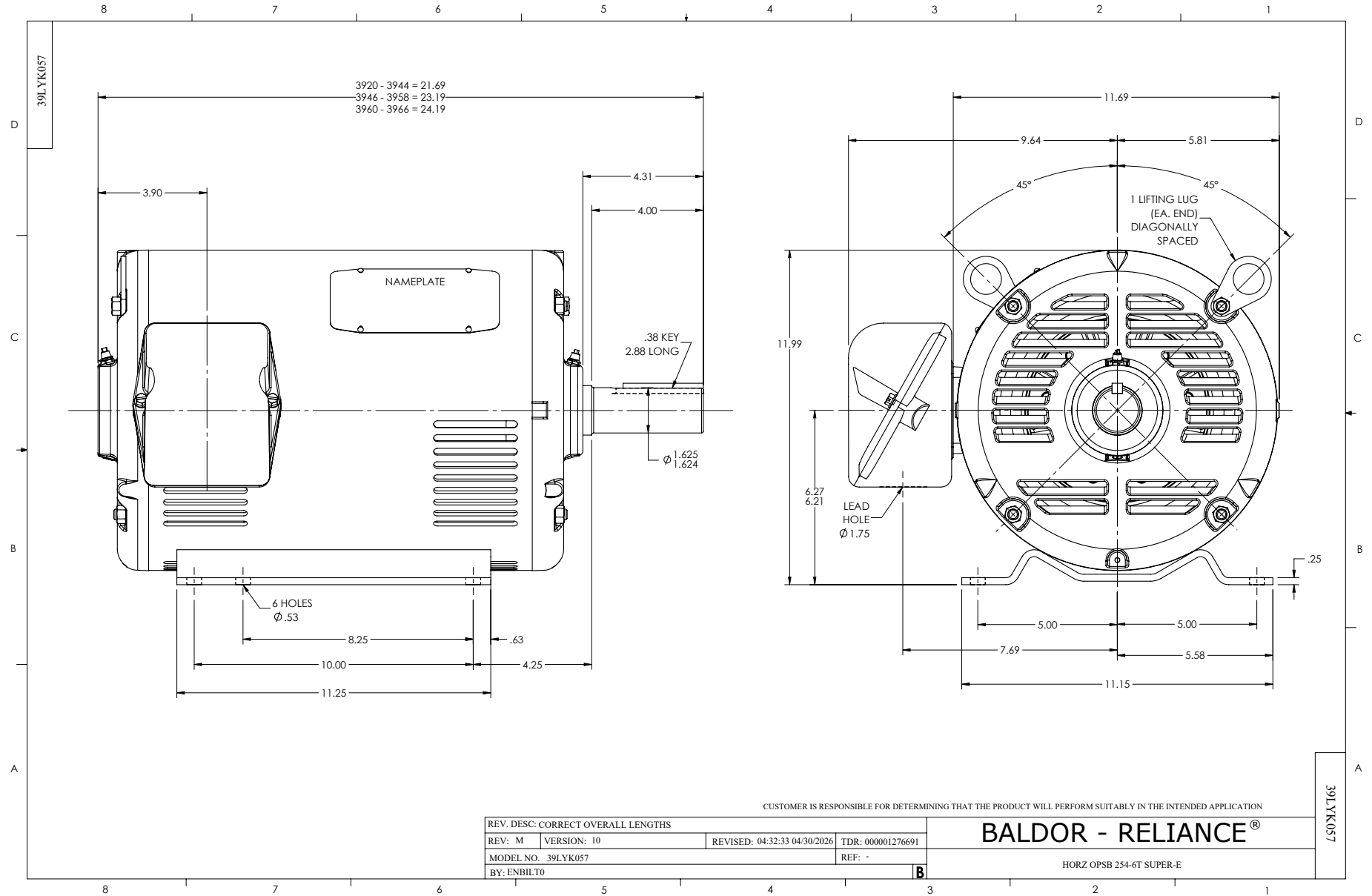
Typical performance - not guaranteed values.

7.5 HP 3 PH 60 HZ 1185 RPM 460 V 3950M

TORQUES (LB-FT): PO=110 PU=43.5 LR=59.6 LRA=76.8



7/8/2026 ACPERF, record # 85549



CD0180



LOW VOLTAGE
(2D)



HIGH VOLTAGE
(1D)



NOTES:

1. INTERCHANGE ANY TWO LINE LEADS TO REVERSE ROTATION.
2. OPTIONAL THERMOSTATS ARE PROVIDED WHEN SPECIFIED.
3. ACTUAL NUMBER OF INTERNAL PARALLEL CIRCUITS MAY BE A MULTIPLE OF THOSE SHOWN ABOVE.
4. LEAD COLORS ARE OPTIONAL. LEADS MUST ALWAYS BE NUMBERED AS SHOWN.

CD0180

REV. DESC: ADD CLASS CONN00000007		
REV. LTR: D	VERSION: 01	TDR: 000001099922
FILE: \AAA\00005\148	REVISED: 10: 25: 29 02/19/2019	BY: ENBRIRO
MTL: -	© □	

BALDOR - RELIANCE®

3PH, DV, 9 LEADS, DELTA CONNECTION

SH 1 of 1