

# ABB BALDOR RELIANCE III

---

## Customer information packet

### EM2395T

15HP, 880RPM, 3PH, 60HZ, 286T, 1060M, TEFC, F1

Class - None

Division - Not Applicable

**Specifications**

<b>Enclosure</b>	TEFC
<b>Frame</b>	286T
<b>Frame Material</b>	Iron
<b>Frequency</b>	60.00 Hz
<b>Haz Area Class and Group</b>	None
<b>Haz Area Division</b>	Not Applicable
<b>Motor Letter Type</b>	Three Phase
<b>Output @ Frequency</b>	15.000 HP @ 60 HZ
<b>Phase</b>	3
<b>Synchronous Speed @ Frequency</b>	900 RPM @ 60 HZ
<b>Voltage @ Frequency</b>	230.0 V @ 60 HZ 460.0 V @ 60 HZ
<b>Agency Approvals</b>	NEMA PREMIUM (OLD LOGO) CURUSEEV NEMA PREMIUM
<b>Ambient Temperature</b>	40 °C
<b>Auxiliary Box</b>	NO AUXILLARY BOX
<b>Auxiliary Box Lead Termination</b>	None
<b>Base Indicator</b>	Rigid
<b>Bearing Grease Type</b>	Polyrex EM (-20F +300F)
<b>Blower</b>	None
<b>Current @ Voltage</b>	46.000 A @ 230.0 V 23.000 A @ 460.0 V
<b>Design Code</b>	B
<b>Drip Cover</b>	No Drip Cover
<b>Duty Rating</b>	CONT
<b>Efficiency @ 100% Load</b>	89.5 %
<b>Electrically Isolated Bearing</b>	Not Electrically Isolated
<b>Feedback Device</b>	NO FEEDBACK
<b>Front Face Code</b>	Standard
<b>Front Shaft Indicator</b>	None
<b>Heater Indicator</b>	No Heater

**Part Detail**

<b>Revision</b>	T
<b>Type</b>	AC
<b>Mech. spec.</b>	10C151
<b>Base</b>	
<b>Status</b>	PRD/A
<b>Elec. spec.</b>	10WGZ376
<b>Layout</b>	10LYC151
<b>Eff. date</b>	01-07-2026
<b>CD Diagram</b>	CD0005
<b>Poles</b>	08
<b>Leads</b>	9#12
<b>Proprietary</b>	False
<b>Created date</b>	04-06-2015

<b>High Voltage Full Load Amps</b>	23.0 a
<b>Insulation Class</b>	F
<b>Inverter Code</b>	Inverter Ready
<b>KVA Code</b>	G
<b>Lifting Lugs</b>	Standard Lifting Lugs
<b>Locked Bearing Indicator</b>	Locked Bearing
<b>Motor Lead Exit</b>	Ko Box
<b>Motor Lead Quantity/Wire Size</b>	9 @ 12 AWG
<b>Motor Lead Termination</b>	Flying Leads
<b>Motor Standards</b>	NEMA
<b>Motor Type</b>	1060M
<b>Mounting Arrangement</b>	F1
<b>Number of Poles</b>	8
<b>Overall Length</b>	27.76 IN
<b>Power Factor</b>	68
<b>Product Family</b>	General Purpose
<b>Pulley End Bearing Type</b>	Ball
<b>Pulley Face Code</b>	Standard
<b>Pulley Shaft Indicator</b>	Standard
<b>Rodent Screen</b>	None
<b>Service Factor</b>	1.15
<b>Shaft Diameter</b>	1.875 IN
<b>Shaft Extension Location</b>	Pulley End
<b>Shaft Ground Indicator</b>	No Shaft Grounding
<b>Shaft Rotation</b>	Reversible
<b>Shaft Slinger Indicator</b>	Shaft Slinger
<b>Speed</b>	880 rpm
<b>Speed Code</b>	Single Speed
<b>Starting Method</b>	Direct on line
<b>Thermal Device - Bearing</b>	None
<b>Thermal Device - Winding</b>	None
<b>Vibration Sensor Indicator</b>	No Vibration Sensor
<b>Winding Thermal 1</b>	None
<b>Winding Thermal 2</b>	None

**Nameplate**

**NP2138L**

<b>CAT.NO.</b>	EM2395T	<b>P/N</b>		<b>ENCLOSURE</b>	TEFC		
<b>SPEC.</b>	10C151Z376G1	<b>CC</b>	010A	<b>FRAME</b>	286T	<b>S/N</b>	
<b>HP</b>	15	<b>CLASS</b>	F	<b>HZ</b>	60		
<b>RPM</b>	880	<b>PH</b>	3	<b>DES</b>	B		
<b>VOLT</b>	230/460	<b>KVA-CODE</b>	G	<b>ODE BRG</b>	6309	<b>DE BRG</b>	6311
<b>AMP</b>	46/23						
<b>RATING</b>	40C AMB-CONT	<b>GREASE</b>	POLYREX EM				
<b>NEMA-NOM-EFF</b>	89.5	<b>PF</b>	68	<b>SER.F.</b>	1.15		
<b>HTR-VOLTS</b>		<b>HTR-AMPS</b>					

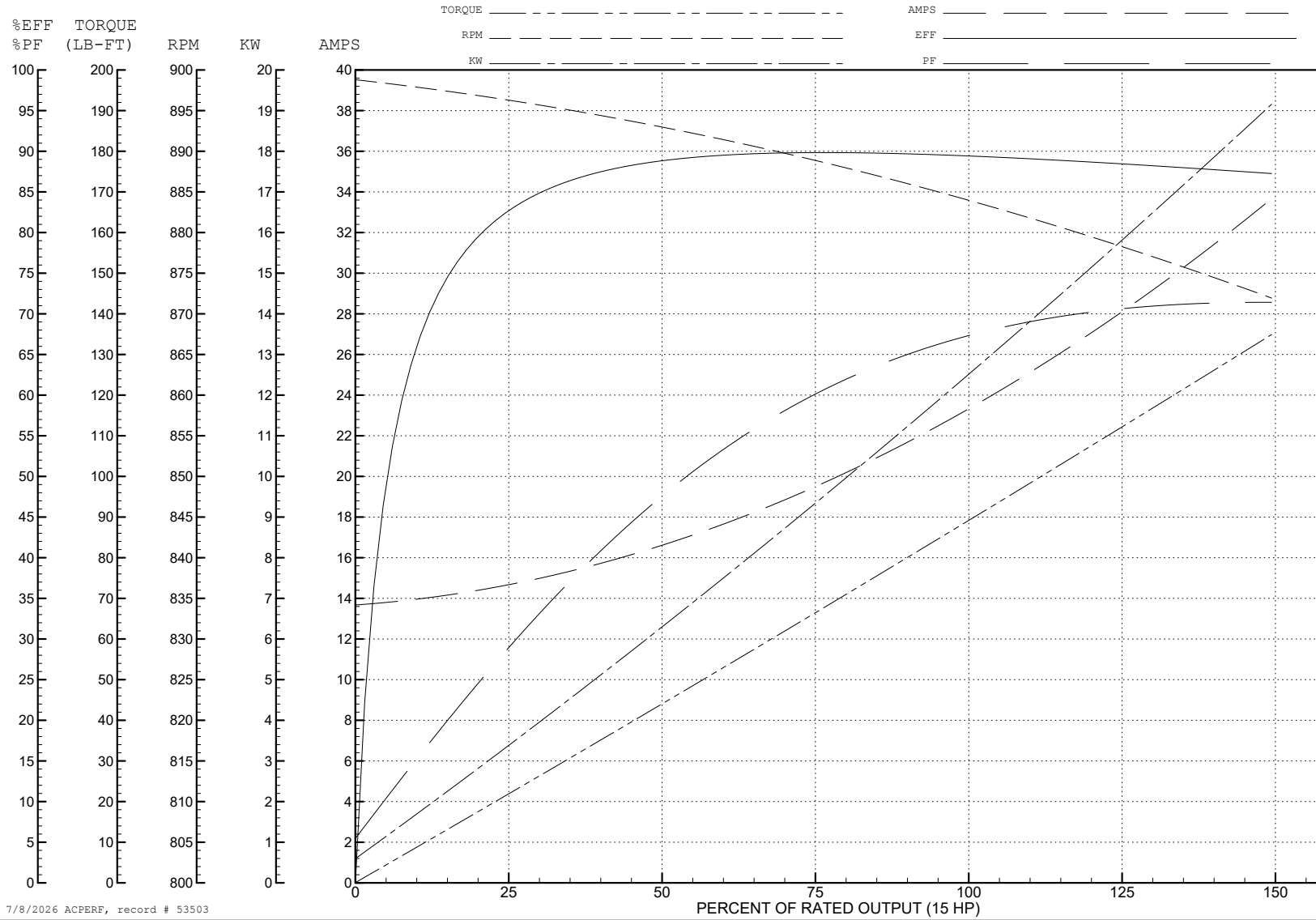
ABB Motors and Mechanical Inc.

WINDING # 10WGZ376

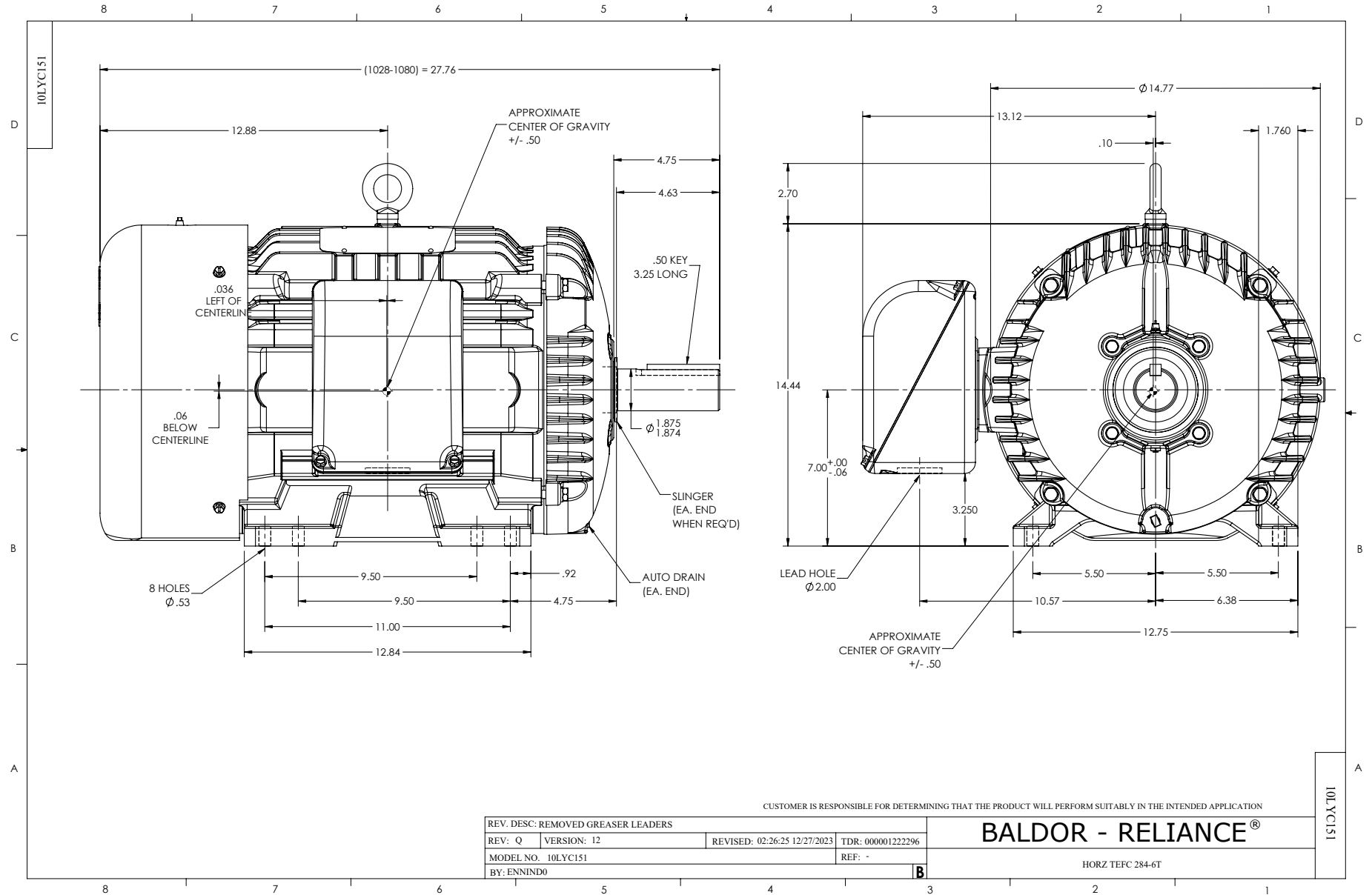
Typical performance - not guaranteed values.

15 HP 3 PH 60 HZ 880 RPM 460 V 1060M

TORQUES (LB-FT): PO=207 PU=91 LR=114 LRA=106



7/8/2026 ACPERF, record # 53503



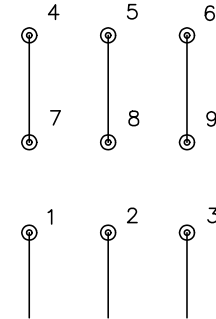
CD0005



LOW VOLTAGE  
(2Y)



HIGH VOLTAGE  
(1Y)



**NOTES:**

1. INTERCHANGE ANY TWO LINE LEADS TO REVERSE ROTATION.
2. OPTIONAL THERMOSTATS ARE PROVIDED WHEN SPECIFIED.
3. ACTUAL NUMBER OF INTERNAL PARALLEL CIRCUITS MAY BE A MULTIPLE OF THOSE SHOWN ABOVE.
4. LEAD COLORS ARE OPTIONAL. LEADS MUST ALWAYS BE NUMBERED AS SHOWN.

CD0005

REV. DESC: REVISE TO SHOW OPTIONAL COLORS

REV. LTR: E BY: JLP REVISED: 01/19/99 10:15 TDR: 0171435

500000

FILE: AAA00005140

MDL: -

MTL: -

**BALDOR ELECTRIC Co.**

3PH, DV, 9 LEADS