



---

# Customer information packet

## EM2394T-8

15HP, 3525RPM, 3PH, 60HZ, 254T, 0930M, TEFC, F1

Class - None

Division - Not Applicable

## Specifications

Enclosure	TEFC
Frame	254T
Frame Material	Iron
Frequency	60.00 Hz
Motor Letter Type	Three Phase
Output @ Frequency	15.000 HP @ 60 HZ
Phase	3
Synchronous Speed @ Frequency	3600 RPM @ 60 HZ
Voltage @ Frequency	200.0 V @ 60 HZ
XP Class and Group	None
XP Division	Not Applicable
Agency Approvals	UR CSA CSA EEV
Ambient Temperature	40 °C
Auxillary Box	No Auxillary Box
Auxillary Box Lead Termination	None
Base Indicator	Rigid
Bearing Grease Type	Polyrex EM (-20F +300F)
Blower	None
Current @ Voltage	40.000 A @ 200.0 V
Design Code	B
Drip Cover	No Drip Cover
Duty Rating	CONT
Efficiency @ 100% Load	91.0 %
Electrically Isolated Bearing	Not Electrically Isolated
Feedback Device	NO FEEDBACK
Front Face Code	Standard
Front Shaft Indicator	None
Heater Indicator	No Heater
High Voltage Full Load Amps	40.0 a
Insulation Class	F

## Part detail

Revision	AG
Type	AC
Mech. spec.	09P11
Base	
Status	PRD/A
Elec. spec.	09WGZ580
Layout	09LYP011
Eff. date	03-07-2023
CD Diagram	CD0006
Poles	02
Leads	3#8
Proprietary	False
Created date	04-22-2010

<b>Inverter Code</b>	Inverter Ready
<b>KVA Code</b>	G
<b>Lifting Lugs</b>	Standard Lifting Lugs
<b>Locked Bearing Indicator</b>	Locked Bearing
<b>Motor Lead Exit</b>	Ko Box
<b>Motor Lead Quantity/Wire Size</b>	3 @ 8 AWG
<b>Motor Lead Termination</b>	Flying Leads
<b>Motor Standards</b>	NEMA
<b>Motor Type</b>	0930M
<b>Mounting Arrangement</b>	F1
<b>Number of Poles</b>	2
<b>Overall Length</b>	23.28 IN
<b>Power Factor</b>	88
<b>Product Family</b>	General Purpose
<b>Pulley End Bearing Type</b>	Ball
<b>Pulley Face Code</b>	Standard
<b>Pulley Shaft Indicator</b>	Standard
<b>Rodent Screen</b>	None
<b>Service Factor</b>	1.15
<b>Shaft Diameter</b>	1.625 IN
<b>Shaft Extension Location</b>	Pulley End
<b>Shaft Ground Indicator</b>	No Shaft Grounding
<b>Shaft Rotation</b>	Reversible
<b>Shaft Slinger Indicator</b>	Shaft Slinger
<b>Speed</b>	3525 rpm
<b>Speed Code</b>	Single Speed
<b>Starting Method</b>	Direct on line
<b>Thermal Device - Bearing</b>	NONE (OLD)
<b>Thermal Device - Winding</b>	None
<b>Vibration Sensor Indicator</b>	No Vibration Sensor
<b>Winding Thermal 1</b>	None
<b>Winding Thermal 2</b>	None

**Nameplate****NP3441L**

<b>CAT.NO.</b>	EM2394T-8						
<b>SPEC.</b>	09P011Z580						
<b>HP</b>	15						
<b>VOLTS</b>	200						
<b>AMP</b>	40						
<b>RPM</b>	3525						
<b>FRAME</b>	254T		<b>HZ</b>	60		<b>PH</b>	3
<b>SER.F.</b>	1.15	<b>CODE</b>	G	<b>DES</b>	B	<b>CL</b>	F
<b>NEMA-NOM-EFF</b>	91	<b>PF</b>	88				
<b>RATING</b>	40C AMB-CONT						
<b>CC</b>	010A	<b>USABLE AT 208V</b>					
<b>DE</b>	6309	<b>ODE</b>	6208				
<b>ENCL</b>	TEFC	<b>SN</b>					

**VPWM INVERTER READY****CT6-60H(10:1)VT3-60H(20:1)**

**Accessories**

<b>Part number</b>	<b>Description</b>	<b>Multiplier</b>
09-1309	C FACE KIT	A8

**AC Induction Motor Performance Data**

Record # 30931

Typical performance - not guaranteed values

Winding: 09WGX580-R001		Type: 0930M		Enclosure: TEFC	
<b>Nameplate Data</b>			<b>200 V, 60 Hz: Single Voltage Motor</b>		
Rated Output (HP)	15	Full Load Torque	22.2 LB-FT		
Volts	200	Start Configuration	direct on line		
Full Load Amps	40	Breakdown Torque	90.9 LB-FT		
R.P.M.	3525	Pull-up Torque	29.3 LB-FT		
Hz	60	Phase	3	Locked-rotor Torque	36.4 LB-FT
NEMA Design Code	B	KVA Code	G	Starting Current	262 A
Service Factor (S.F.)	1.15	No-load Current	12.9 A		
NEMA Nom. Eff.	91	Power Factor	88	Line-line Res. @ 25°C	0.131 Ω
Rating - Duty	40C AMB-CONT		Temp. Rise @ Rated Load	60°C	
S.F. Amps			Temp. Rise @ S.F. Load	75°C	
			Locked-rotor Power Factor	30	
			Rotor inertia	0.766 LB-FT <sup>2</sup>	

**Load Characteristics 200 V, 60 Hz, 15 HP**

% of Rated Load	25	50	75	100	125	150	S.F.
Power Factor	59	79	86	89	89	89	89
Efficiency	86.4	90.6	91.4	91.2	90.7	89.8	90.9
Speed	3581	3563	3543	3524	3501	3476	3510
Line amperes	16.1	22.7	30.8	39.7	49.3	59.8	45.5

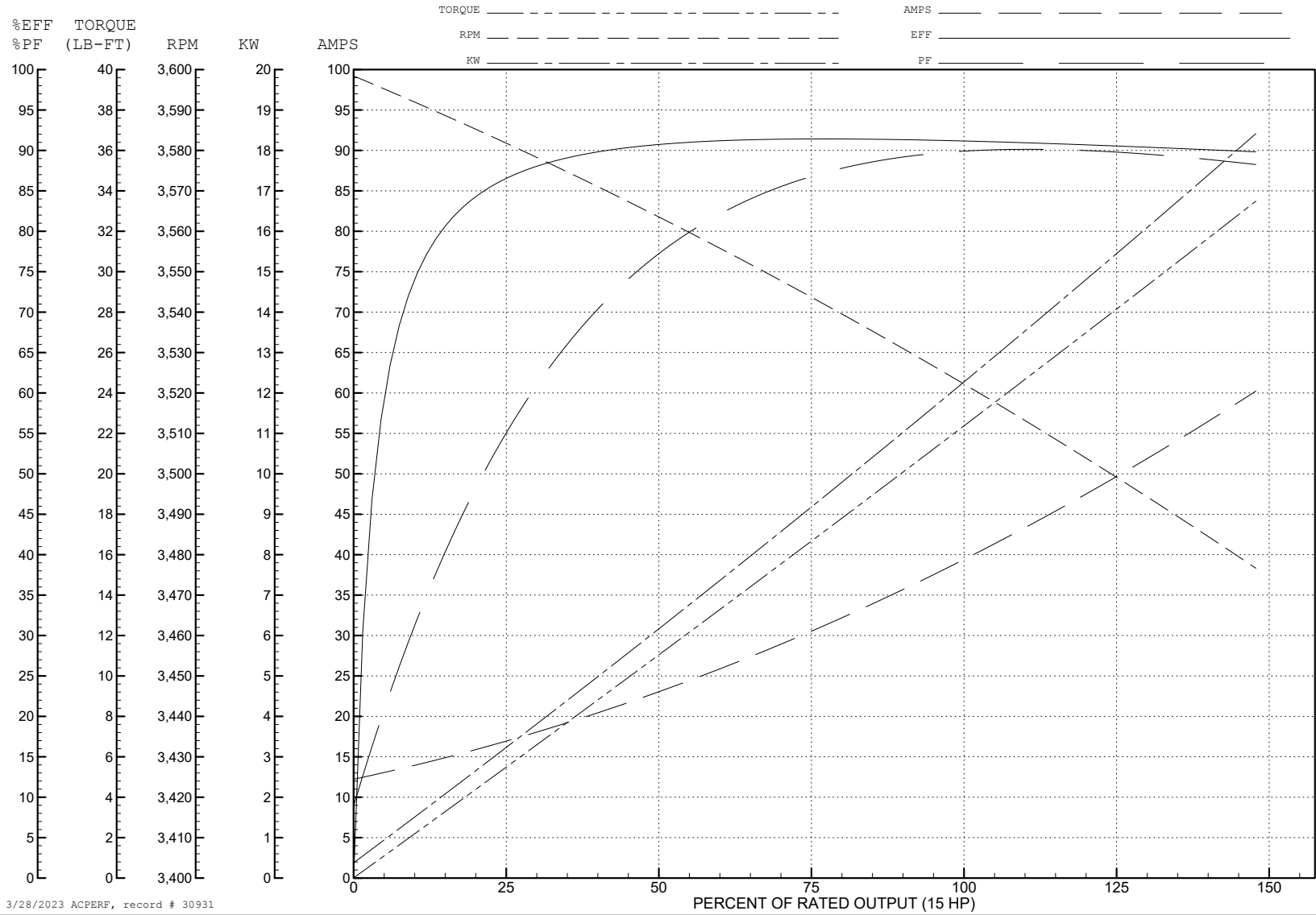
ABB Motors and Mechanical Inc.

WINDING # 09WGZ580

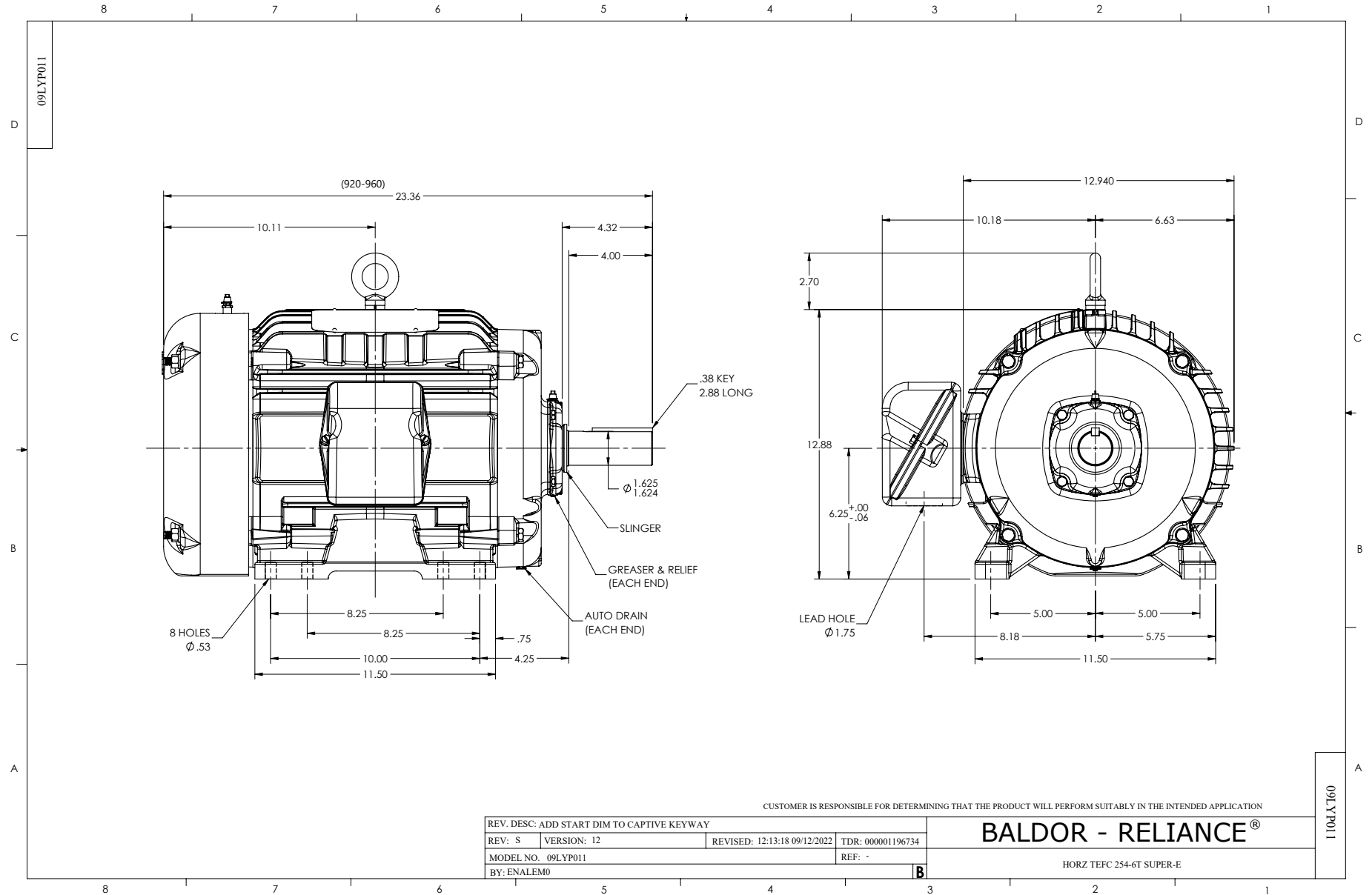
Typical performance - not guaranteed values.

15 HP 3 PH 60 HZ 3525 RPM 200 V 0930M

TORQUES (LB-FT): PO=90.9 PU=29.3 LR=36.4 LRA=262

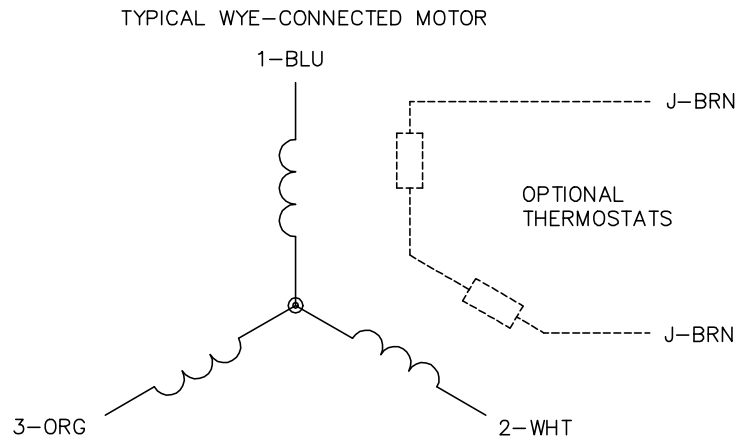


3/28/2023 ACPERF, record # 30931





CD0006



NOTES:

1. THREE LEAD MOTOR MAY BE EITHER WYE CONNECTED OR DELTA CONNECTED.
2. INTERCHANGE ANY TWO LINE LEADS TO REVERSE ROTATION.
3. OPTIONAL THERMOSTATS ARE PROVIDED WHEN SPECIFIED.
4. ACTUAL NUMBER OF INTERNAL PARALLEL CIRCUITS MAY VARY.
5. LEAD COLORS ARE OPTIONAL. LEADS MUST BE NUMBERED AS SHOWN.

CD0006

REV. DESC: ADD CLASS CONN00000007		
REV. LTR: E	VERSION: 01	TDR: 000001099922
FILE: \AAA\00005\141	REVISED: 10:24:49 02/19/2019	BY: ENBRIRO
MTL: -		© □

**BALDOR - RELIANCE®**

3PH, SV, 3 LEADS, WYE OR DELTA CONNECTED

SH 1 of 1