



Customer information packet

EM2333T-8G

15HP, 1765RPM, 3PH, 60HZ, 254T, 0936M, TEFC, F1

Class - None

Division - Not Applicable

Specifications

Enclosure	TEFC
Frame	254T
Frame Material	Iron
Frequency	60.00 Hz
Haz Area Class and Group	None
Haz Area Division	Not Applicable
Motor Letter Type	Three Phase
Output @ Frequency	15.000 HP @ 60 HZ
Phase	3
Synchronous Speed @ Frequency	1800 RPM @ 60 HZ
Voltage @ Frequency	200.0 V @ 60 HZ
Agency Approvals	CSA CSA EEV UR
Ambient Temperature	40 °C
Auxillary Box	No Auxillary Box
Auxillary Box Lead Termination	None
Base Indicator	Rigid
Bearing Grease Type	Polyrex EM (-20F +300F)
Blower	None
Current @ Voltage	42.400 A @ 200.0 V 42.400 A @ 208.0 V
Design Code	B
Drip Cover	No Drip Cover
Duty Rating	CONT
Efficiency @ 100% Load	92.4 %
Electrically Isolated Bearing	Not Electrically Isolated
Feedback Device	NO FEEDBACK
Front Face Code	Standard
Front Shaft Indicator	None
Heater Indicator	No Heater
High Voltage Full Load Amps	42.4 a

Part detail

Revision	AJ
Type	AC
Mech. spec.	09J359
Base	
Status	PRD/A
Elec. spec.	09WGX824
Layout	09LYJ359
Eff. date	04-16-2024
CD Diagram	CD0006
Poles	04
Leads	3#8
Proprietary	False
Created date	09-11-2013

Insulation Class	H
Inverter Code	Inverter Ready
KVA Code	H
Lifting Lugs	Standard Lifting Lugs
Locked Bearing Indicator	Locked Bearing
Motor Lead Exit	Ko Box
Motor Lead Quantity/Wire Size	3 @ 8 AWG
Motor Lead Termination	Flying Leads
Motor Standards	NEMA
Motor Type	0936M
Mounting Arrangement	F1
Number of Poles	4
Overall Length	23.30 IN
Power Factor	82
Product Family	General Purpose
Pulley End Bearing Type	Ball
Pulley Face Code	Standard
Pulley Shaft Indicator	Standard
Rodent Screen	None
Service Factor	1.15
Shaft Diameter	1.625 IN
Shaft Extension Location	Pulley End
Shaft Ground Indicator	Shaft Grounding
Shaft Rotation	Reversible
Shaft Slinger Indicator	Shaft Slinger
Speed	1765 rpm
Speed Code	Single Speed
Starting Method	Direct on line
Thermal Device - Bearing	None
Thermal Device - Winding	None
Vibration Sensor Indicator	No Vibration Sensor
Winding Thermal 1	None
Winding Thermal 2	None

Nameplate**NP3441L**

CAT.NO.	EM2333T-8G						
SPEC.	09J359X824G2						
HP	15						
VOLTS	200						
AMP	42.4						
RPM	1765						
FRAME	254T		HZ	60		PH	3
SER.F.	1.15	CODE	H	DES	B	CL	H
NEMA-NOM-EFF	92.4	PF	82				
RATING	40C AMB-CONT						
CC	010A						
DE	6309		ODE	6208			
ENCL	TEFC	SN					

VPWM INVERTER READY**CT6-60H(10:1)VT3-60H(20:1)**

AC Induction Motor Performance Data

Record # 50247

Typical performance - not guaranteed values

Winding: 09WGX824-R007		Type: 0936M		Enclosure: TEFC	
Nameplate Data			200 V, 60 Hz: Single Voltage Motor		
Rated Output (HP)	15	Full Load Torque	44.6 LB-FT		
Volts	200	Start Configuration	direct on line		
Full Load Amps	42.4	Breakdown Torque	165 LB-FT		
R.P.M.	1765	Pull-up Torque	68 LB-FT		
Hz	60	Locked-rotor Torque	79 LB-FT		
NEMA Design Code	B	Starting Current	282 A		
Service Factor (S.F.)	1.15	No-load Current	18.9 A		
NEMA Nom. Eff.	92.4	Line-line Res. @ 25°C	0.119 Ω		
Rating - Duty	40C	Temp. Rise @ Rated Load	63°C		
S.F. Amps	AMB-CONT	Temp. Rise @ S.F. Load	77°C		
		Locked-rotor Power Factor	35		
		Rotor inertia	1.57 LB-FT ²		

Load Characteristics 200 V, 60 Hz, 15 HP

% of Rated Load	25	50	75	100	125	150	S.F.
Power Factor	42	66	76	82	84	85	83
Efficiency	87.7	91.9	92.6	92.4	91.6	90.4	91.9
Speed	1791	1782	1773	1763	1752	1740	1756
Line amperes	22	27	34.5	42.4	52	62	48.16

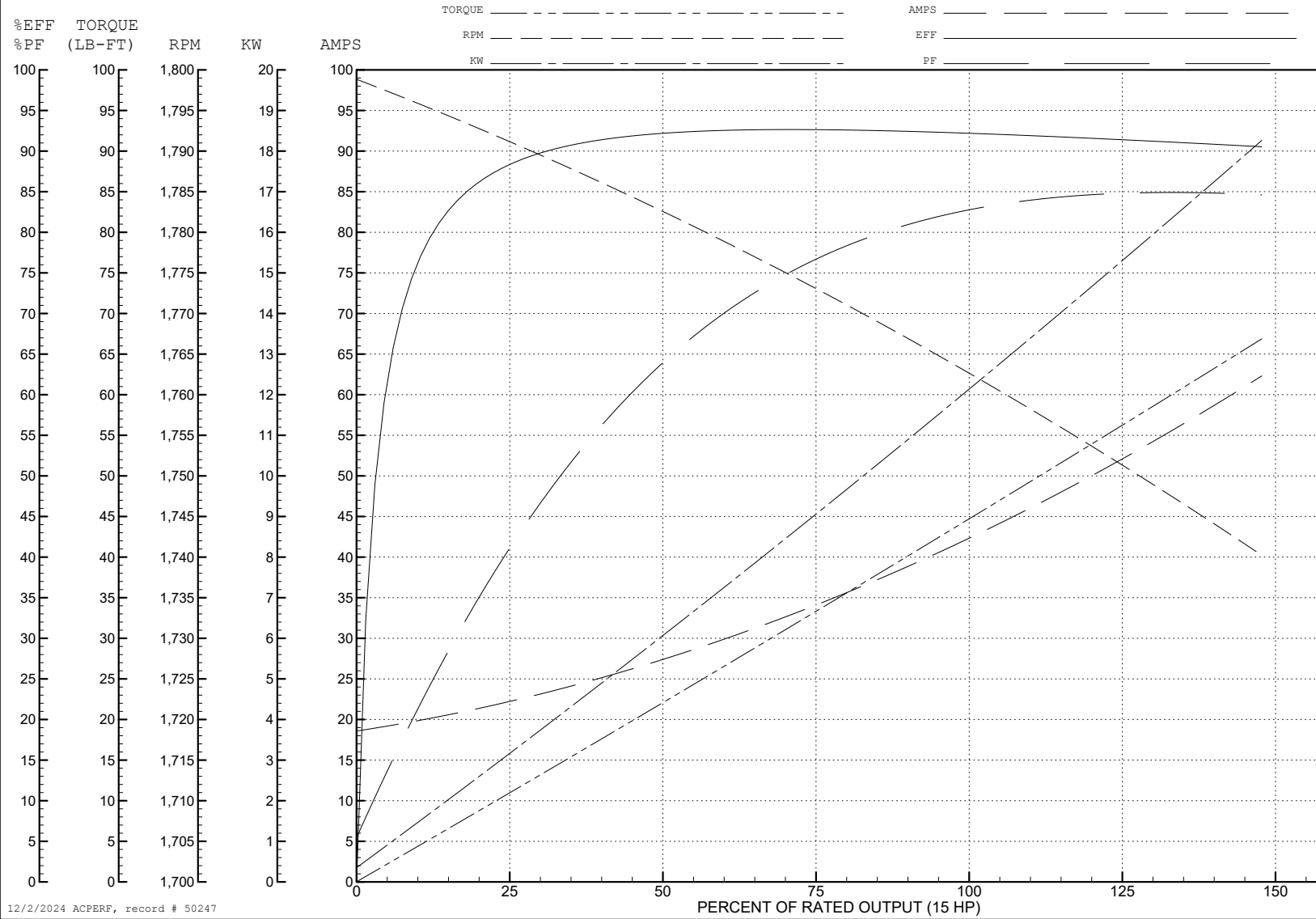
ABB Motors and Mechanical Inc.

WINDING # 09WGX824

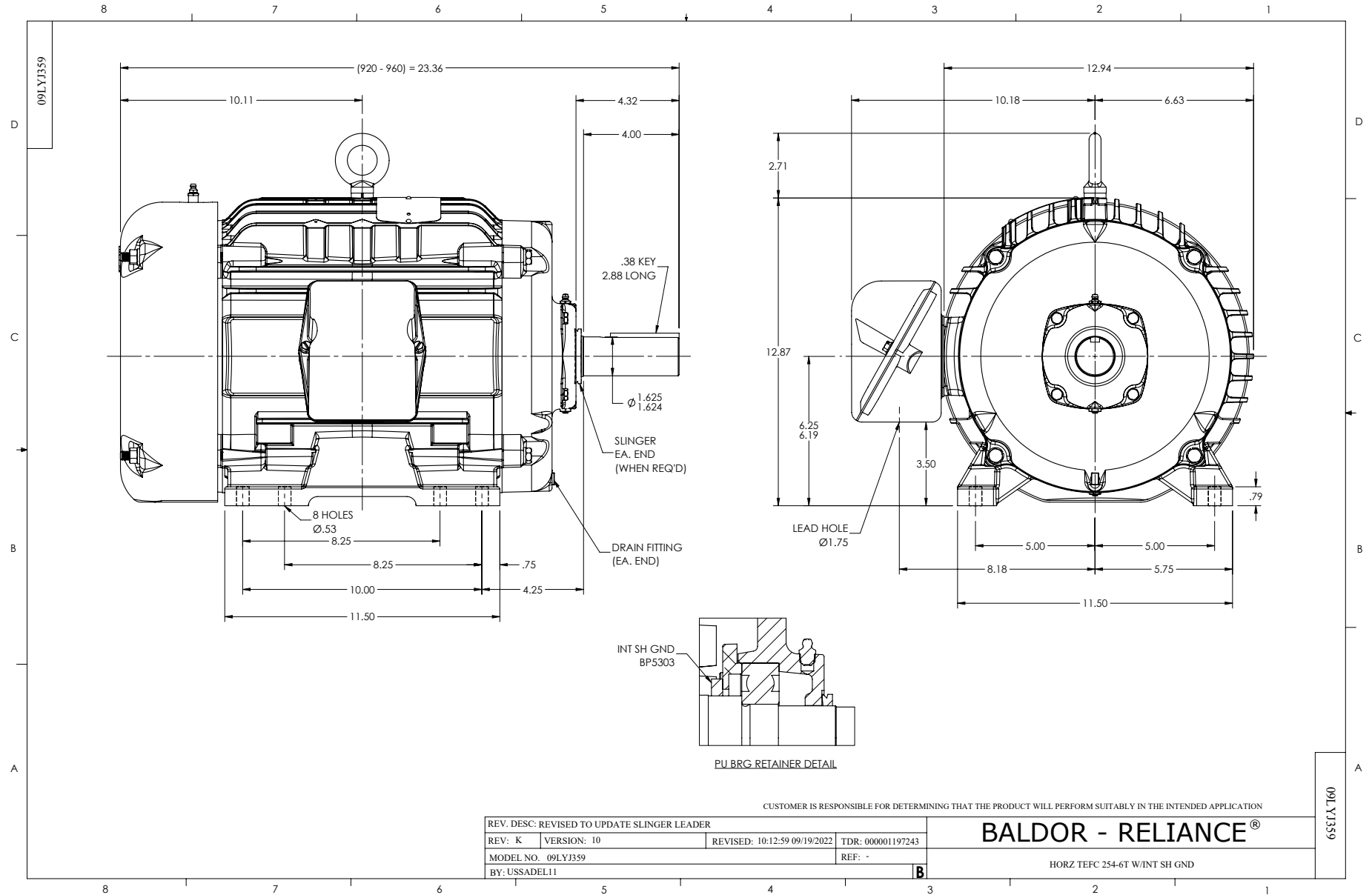
Typical performance - not guaranteed values.

15 HP 3 PH 60 HZ 1765 RPM 200 V 0936M

TORQUES (LB-FT): PO=165 PU=68 LR=79 LRA=282



12/2/2024 ACPERF, record # 50247



CD0006



NOTES:

1. THREE LEAD MOTOR MAY BE EITHER WYE CONNECTED OR DELTA CONNECTED.
2. INTERCHANGE ANY TWO LINE LEADS TO REVERSE ROTATION.
3. OPTIONAL THERMOSTATS ARE PROVIDED WHEN SPECIFIED.
4. ACTUAL NUMBER OF INTERNAL PARALLEL CIRCUITS MAY VARY.
5. LEAD COLORS ARE OPTIONAL. LEADS MUST BE NUMBERED AS SHOWN.

CD0006

REV. DESC: ADD CLASS CONN00000007		
REV. LTR: E	VERSION: 01	TDR: 000001099922
FILE: \AAA\00005\141	REVISED: 10:24:49 02/19/2019	BY: ENBRIRO
MTL: -		© □

BALDOR - RELIANCE®

3PH, SV, 3 LEADS, WYE OR DELTA CONNECTED

SH 1 of 1