



Customer information packet

EM2276T-G

7.5HP, 1180RPM, 3PH, 60HZ, 254T, 0954M, TEFC, F

Class - None

Division - Not Applicable

Specifications

Enclosure	TEFC
Frame	254T
Frame Material	Iron
Frequency	60.00 Hz
Haz Area Class and Group	None
Haz Area Division	Not Applicable
Motor Letter Type	Three Phase
Output @ Frequency	7.500 HP @ 60 HZ
Phase	3
Synchronous Speed @ Frequency	1200 RPM @ 60 HZ
Voltage @ Frequency	460.0 V @ 60 HZ 230.0 V @ 60 HZ
Agency Approvals	CSA CSA EEV UR
Ambient Temperature	40 °C
Auxillary Box	No Auxillary Box
Auxillary Box Lead Termination	None
Base Indicator	Rigid
Bearing Grease Type	Polyrex EM (-20F +300F)
Blower	None
Current @ Voltage	22.000 A @ 230.0 V 23.000 A @ 208.0 V 11.000 A @ 460.0 V
Design Code	A
Drip Cover	No Drip Cover
Duty Rating	CONT
Efficiency @ 100% Load	91.0 %
Electrically Isolated Bearing	Not Electrically Isolated
Feedback Device	NO FEEDBACK
Front Face Code	Standard
Front Shaft Indicator	None

Part detail

Revision	AL
Type	AC
Mech. spec.	09J359
Base	
Status	PRD/A
Elec. spec.	09WGT118
Layout	09LYJ359
Eff. date	03-19-2024
CD Diagram	CD0005
Poles	06
Leads	9#12
Proprietary	False
Created date	10-03-2014

Heater Indicator	No Heater
High Voltage Full Load Amps	11.0 a
Insulation Class	H
Inverter Code	Inverter Ready
KVA Code	J
Lifting Lugs	Standard Lifting Lugs
Locked Bearing Indicator	Locked Bearing
Motor Lead Exit	Ko Box
Motor Lead Quantity/Wire Size	9 @ 12 AWG
Motor Lead Termination	Flying Leads
Motor Standards	NEMA
Motor Type	0954M
Mounting Arrangement	F1
Number of Poles	6
Overall Length	23.30 IN
Power Factor	70
Product Family	General Purpose
Pulley End Bearing Type	Ball
Pulley Face Code	Standard
Pulley Shaft Indicator	Standard
Rodent Screen	None
Service Factor	1.15
Shaft Diameter	1.625 IN
Shaft Extension Location	Pulley End
Shaft Ground Indicator	Shaft Grounding
Shaft Rotation	Reversible
Shaft Slinger Indicator	Shaft Slinger
Speed	1180 rpm
Speed Code	Single Speed
Starting Method	Direct on line
Thermal Device - Bearing	None
Thermal Device - Winding	None
Vibration Sensor Indicator	No Vibration Sensor
Winding Thermal 1	None

Winding Thermal 2

None

Nameplate

NP3441LUA

CAT.NO.	EM2276T-G						
SPEC	09J359T118G1						
HP	7.5						
VOLTS	230/460						
AMPS	22/11						
RPM	1180						
FRAME	254T		HZ	60		PH	3
SF	1.15	CODE	J	DES	A	CLASS	H
NEMA NOM. EFF	91	PF	70				
RATING	40C AMB-CONT						
CC	010A						
ENCL	TEFC	SER					
DE	6309	ODE	6208				
VPWM INVERTER READY	SFA 24.6/12.3						
CT6-60H(10:1)VT3-60H(20:1)	50HZ 7.5HP 190/380V 25/12.5						SF1.0

AC Induction Motor Performance Data

Record # 47558

Typical performance - not guaranteed values

Winding: 09WGT118-R002		Type: 0954M		Enclosure: TEFC	
Nameplate Data			460 V, 60 Hz: High Voltage Connection		
Rated Output (HP)	7.5		Full Load Torque	33.2 LB-FT	
Volts	230/460		Start Configuration	direct on line	
Full Load Amps	22/11		Breakdown Torque	113 LB-FT	
R.P.M.	1180		Pull-up Torque	41.3 LB-FT	
Hz	60 Phase	3	Locked-rotor Torque	57.4 LB-FT	
NEMA Design Code	A KVA Code	J	Starting Current	74.8 A	
Service Factor (S.F.)	1.15		No-load Current	6.06 A	
NEMA Nom. Eff.	91 Power Factor	70	Line-line Res. @ 25°C	0.87037 Ω	
Rating - Duty	40C AMB-CONT		Temp. Rise @ Rated Load	36°C	
S.F. Amps			Temp. Rise @ S.F. Load	42°C	

Load Characteristics 460 V, 60 Hz, 7.5 HP

% of Rated Load	25	50	75	100	125	150	S.F.
Power Factor	32	52	63	70	74	75	72
Efficiency	83.2	89.4	90.9	91.1	90.7	89.9	90.9
Speed	1196.5	1192.4	1188.3	1183.7	1178.7	1173.2	1181
Line amperes	6.49	7.59	9.09	11	13.1	15.5	12.3

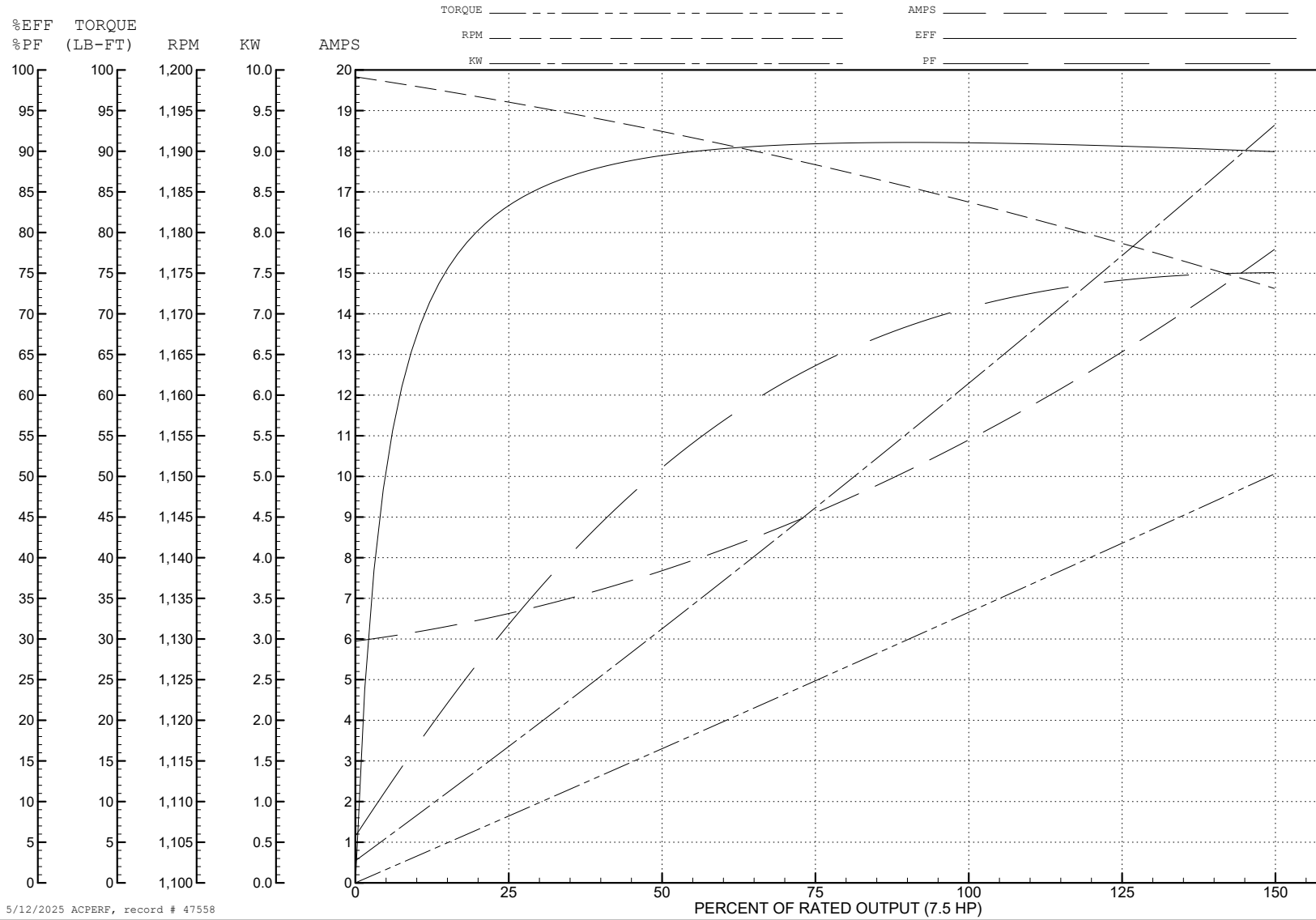
ABB Motors and Mechanical Inc.

WINDING # 09WGT118

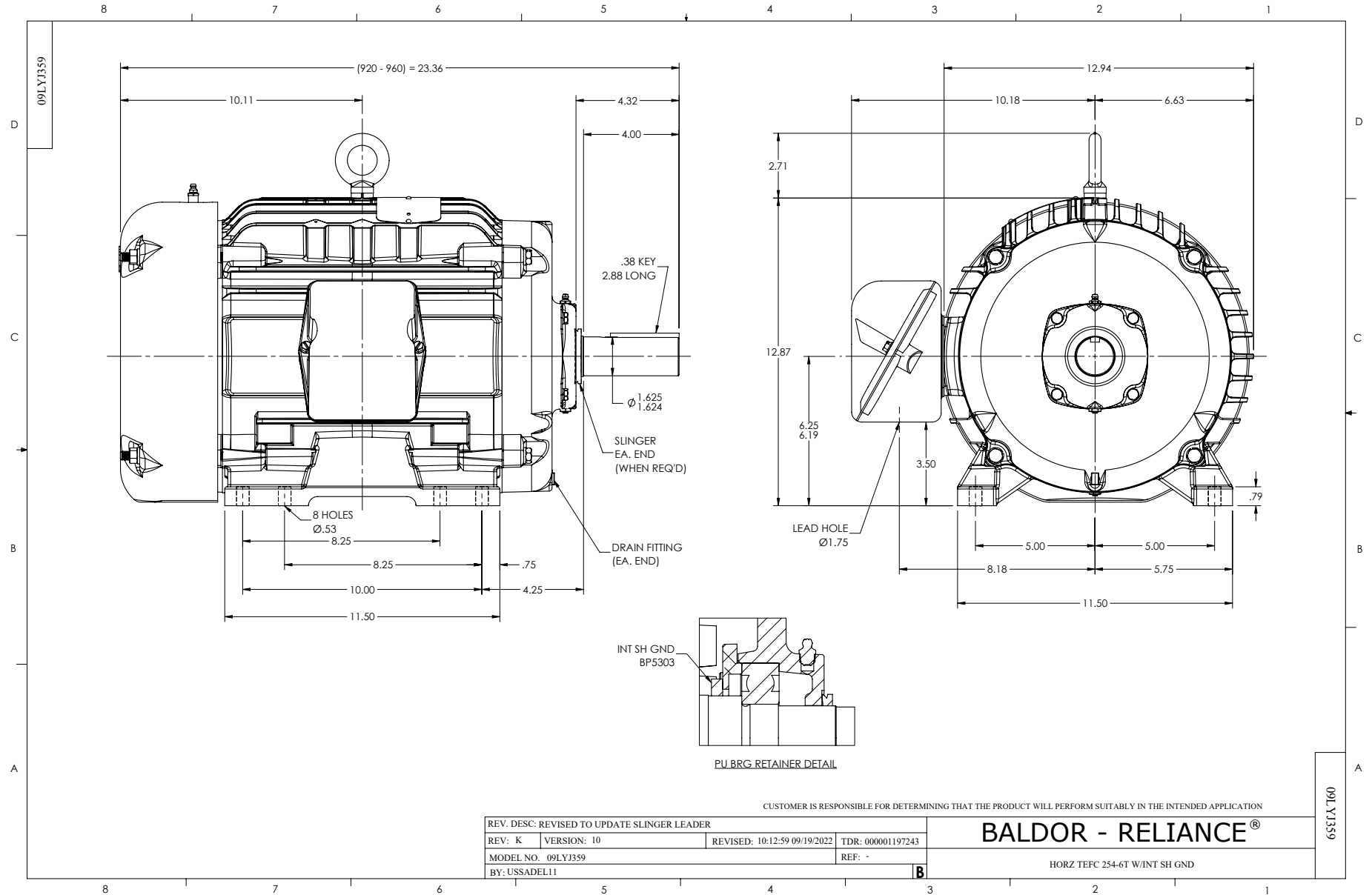
Typical performance - not guaranteed values.

7.5 HP 3 PH 60 HZ 1180 RPM 460 V 0954M

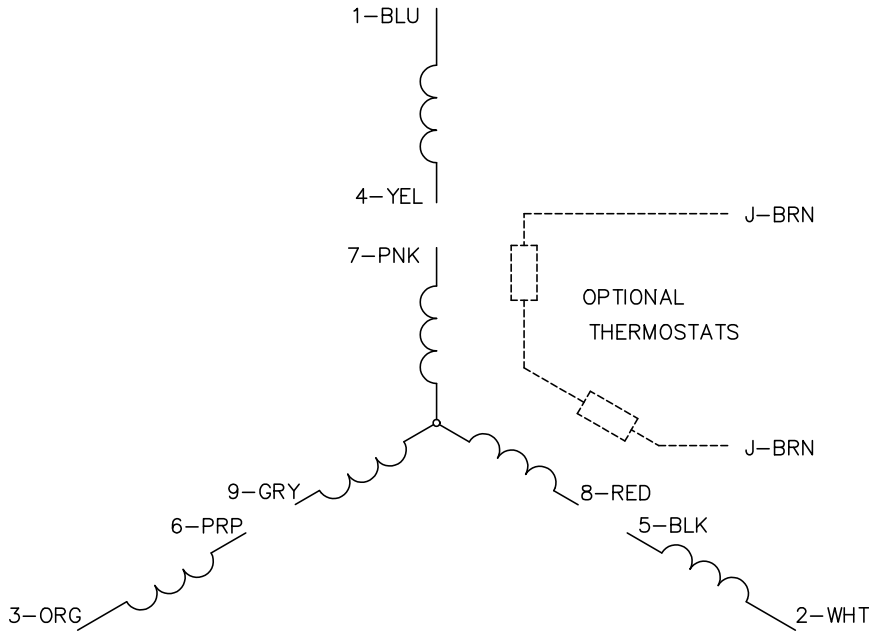
TORQUES (LB-FT): PO=113 PU=41.3 LR=57.4 LRA=74.8



5/12/2025 ACPERF, record # 47558



CD0005

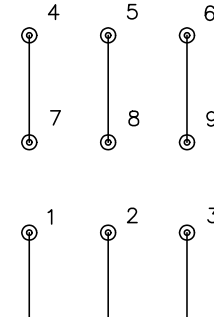


LOW VOLTAGE
(2Y)



LINE

HIGH VOLTAGE
(1Y)



LINE

NOTES:

1. INTERCHANGE ANY TWO LINE LEADS TO REVERSE ROTATION.
2. OPTIONAL THERMOSTATS ARE PROVIDED WHEN SPECIFIED.
3. ACTUAL NUMBER OF INTERNAL PARALLEL CIRCUITS MAY BE A MULTIPLE OF THOSE SHOWN ABOVE.
4. LEAD COLORS ARE OPTIONAL. LEADS MUST ALWAYS BE NUMBERED AS SHOWN.

CD0005

REV. DESC: REVISE TO SHOW OPTIONAL COLORS

REV. LTR: E BY: JLP REVISED: 01/19/99 10:15 TDR: 0171435

500000

FILE: AAA00005140

MDL: -

MTL: -

BALDOR ELECTRIC Co.

3PH, DV, 9 LEADS